



2000 Mercedes-Benz E430 (W210) Cabin Filter Change / Glove Box Removal

Author: 6ft6in_Giant

Distribution: Distribution is unlimited. (No copyright.)

Disclaimer: I accept no liability for any damage to your vehicle, personal injury, or death. Basically, all liability is on you.

Thoughts: If you get frustrated, just stop, breath deep, take a few minutes, and then come back to the problem with fresh eyes and a fresh mind.

This is for AUTOMATIC Climate Control

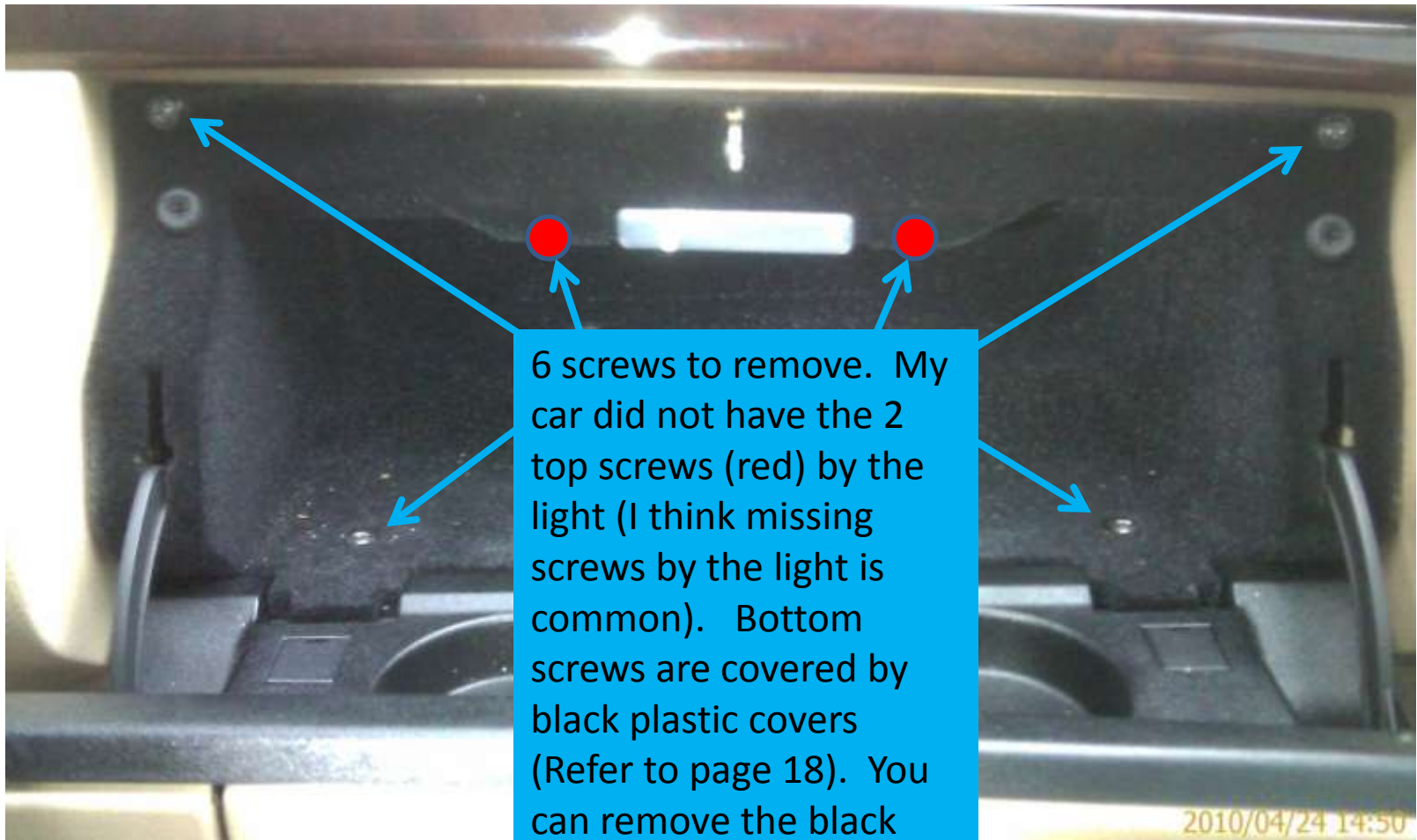


Tools

- Short Screwdriver
- Long Screwdriver
- Good Flashlight



The CABIN FILTER is behind the glove box. Not very convenient, but you don't change the filter that often anyway.

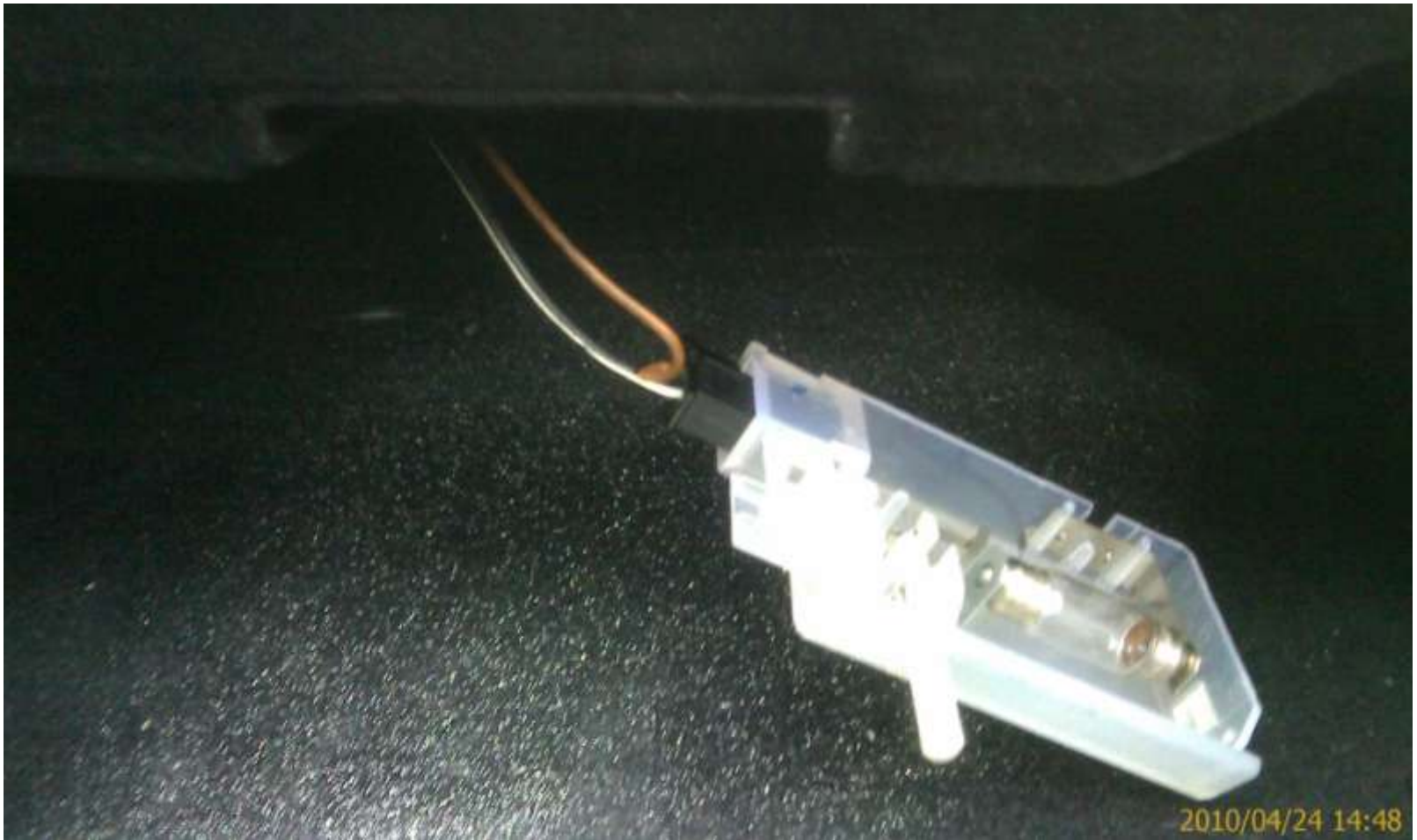


6 screws to remove. My car did not have the 2 top screws (red) by the light (I think missing screws by the light is common). Bottom screws are covered by black plastic covers (Refer to page 18). You can remove the black covers by hand pretty easily.

Once screws are removed, remove light cover.
Pry from the right side. You should be able to
do this by hand. Could use flathead screwdriver.



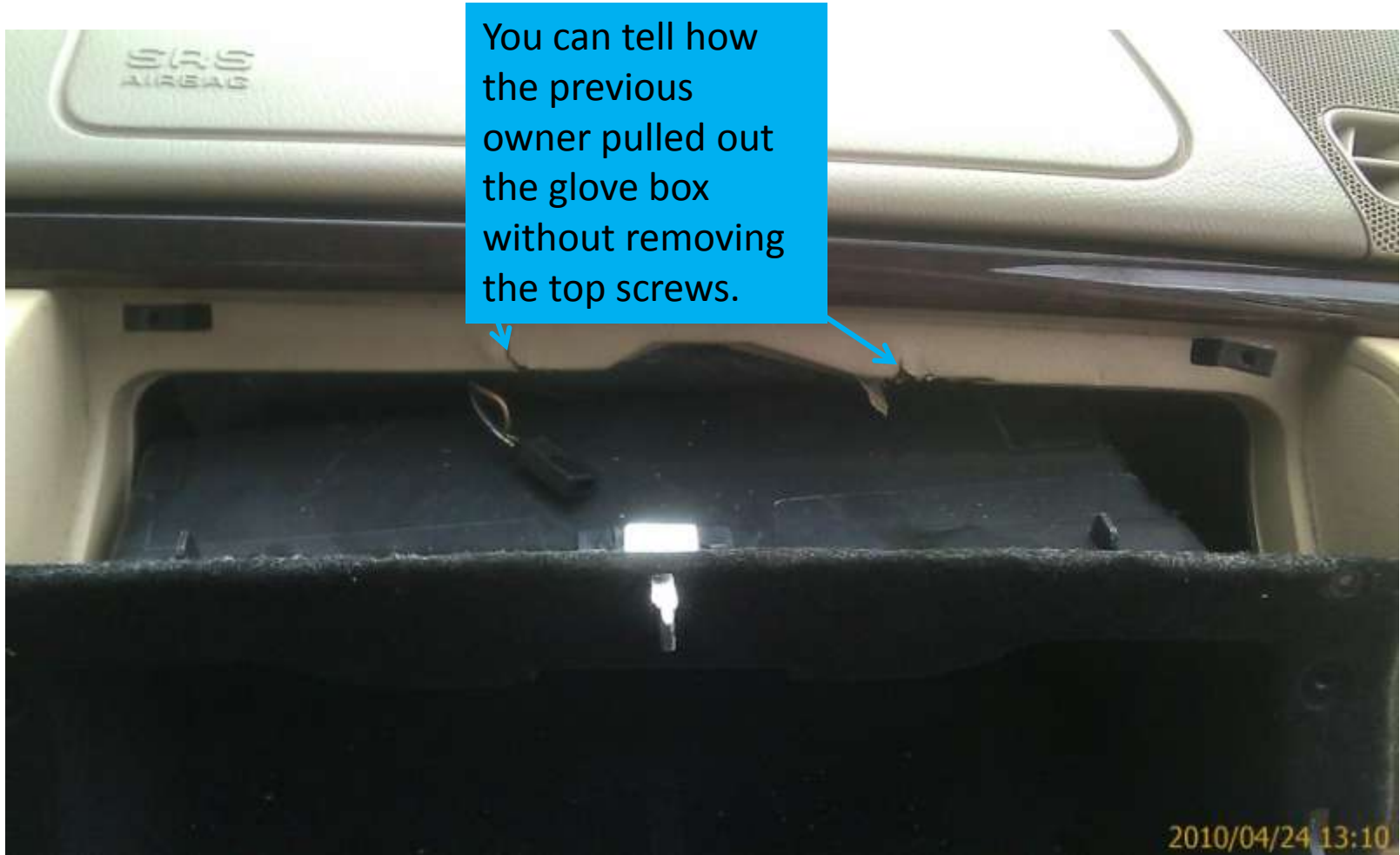
Light cover removed.



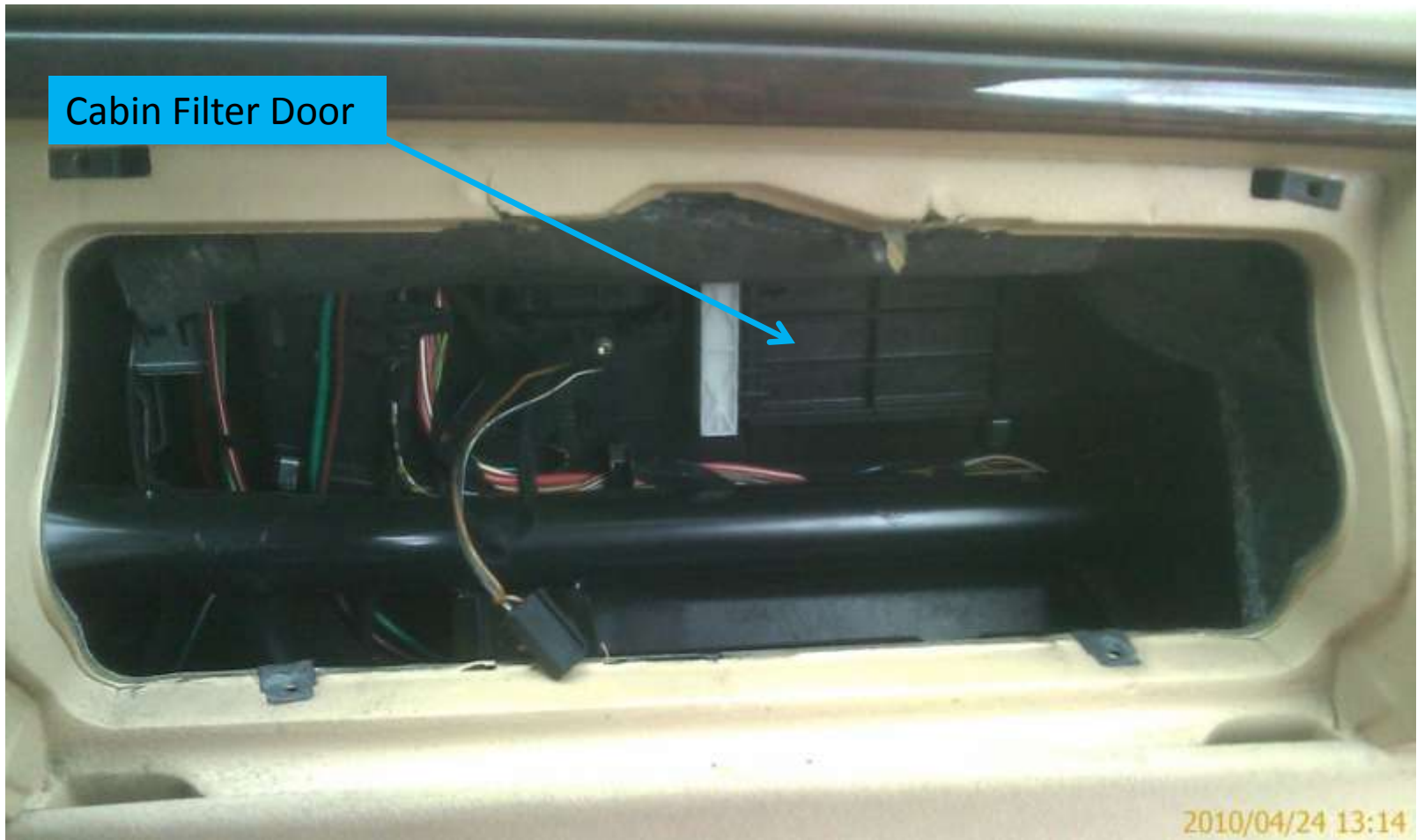
Disconnect Plug.



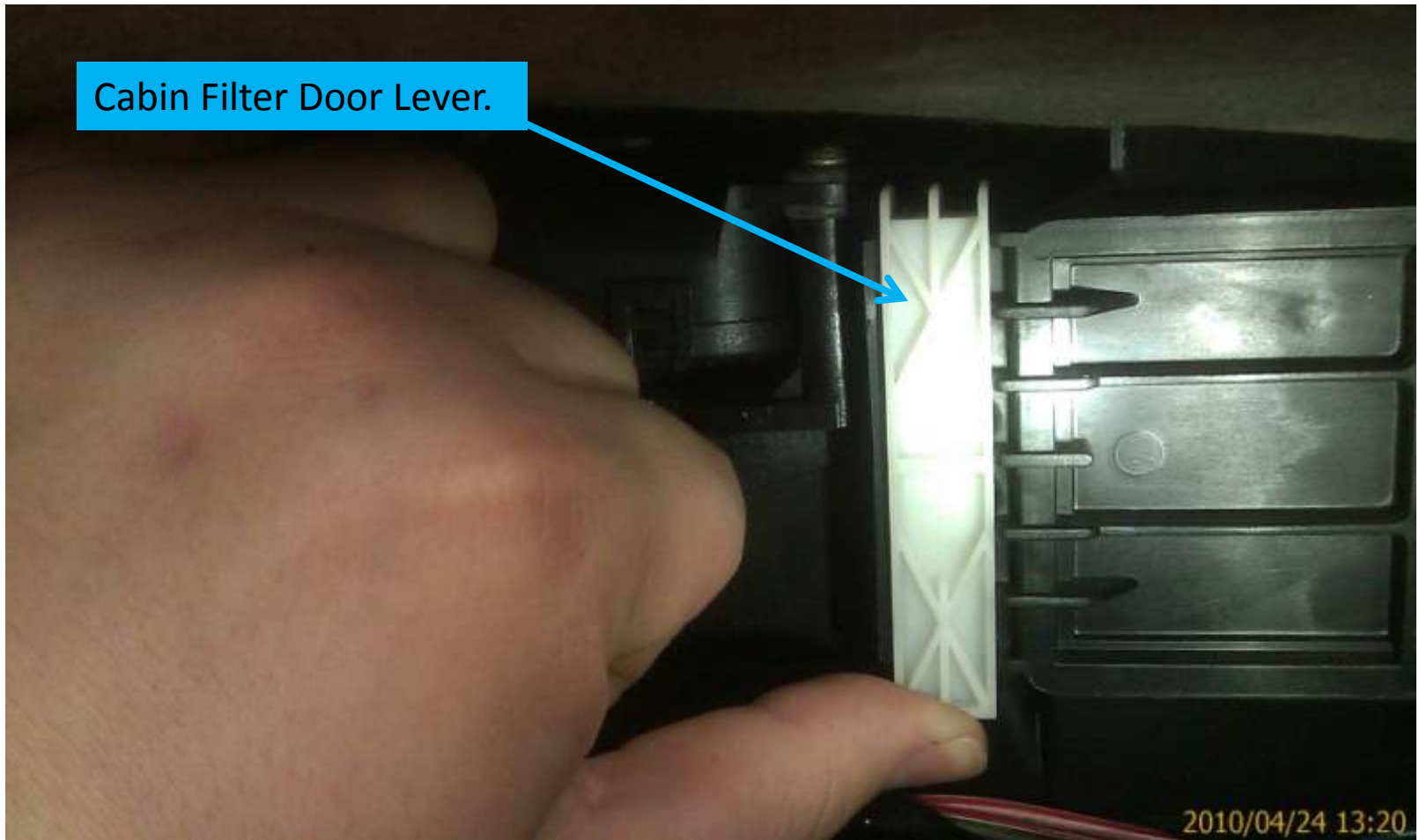
Now the fun. Be careful here. Pull out on the glove box door while pulling down at the hole where the glove box light was. This is more a function of how you apply the force than how much force you apply.



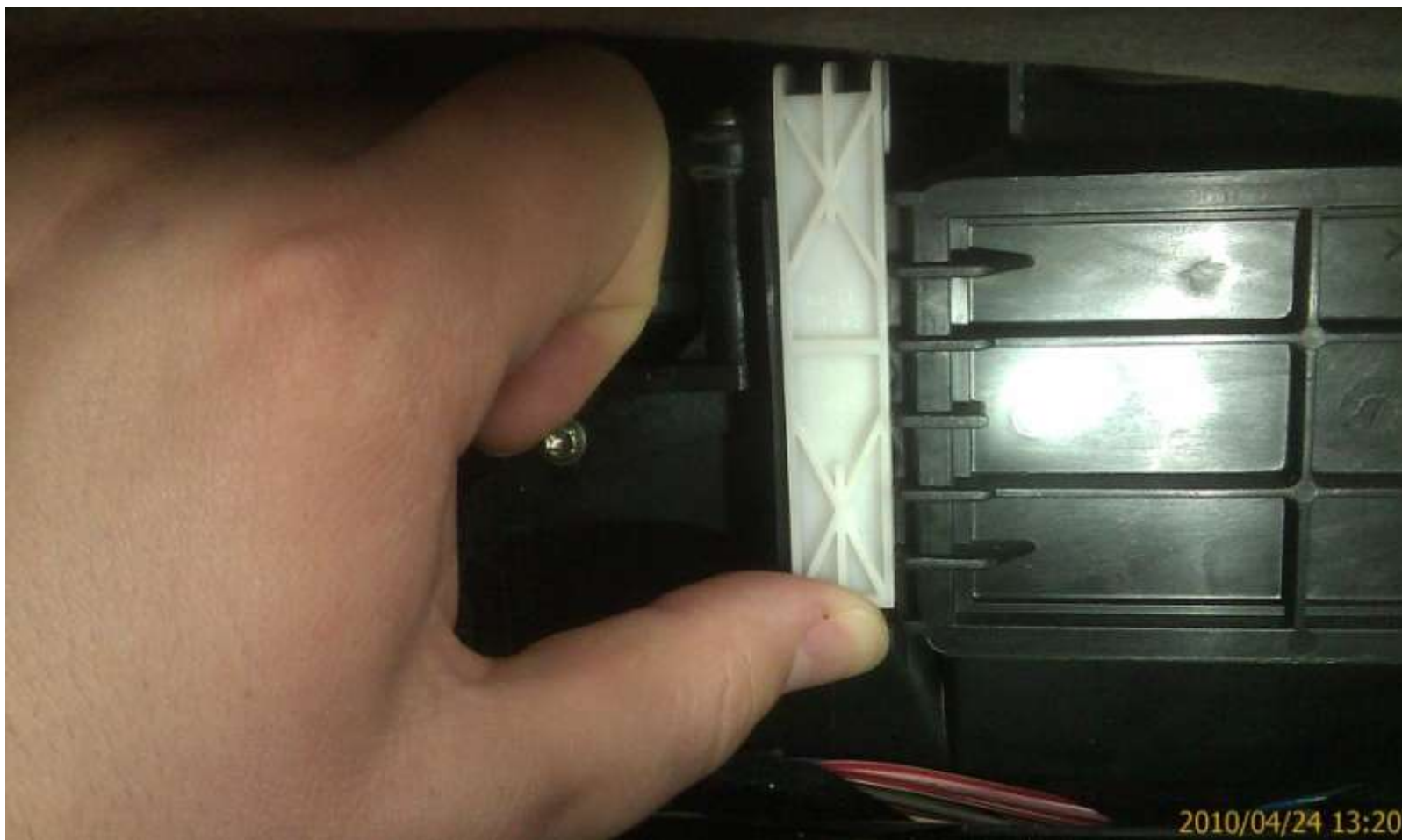
The cabin filter door is to the right.



Lever to open cabin filter door.



Slide lever up.



Remove Cabin Filter Door.

Note: This slide is not in chronological order. I already have the new filters in for this picture.



Old Cabin Filters.



There are two filters. They come in a set. The first one slides right out. The second one you have to slide over then out. Check around the edges of the filter box and wipe any dirt or dead bugs out. Cleaning the edges of the filter box will ensure a good seal between the filter and the filter box.



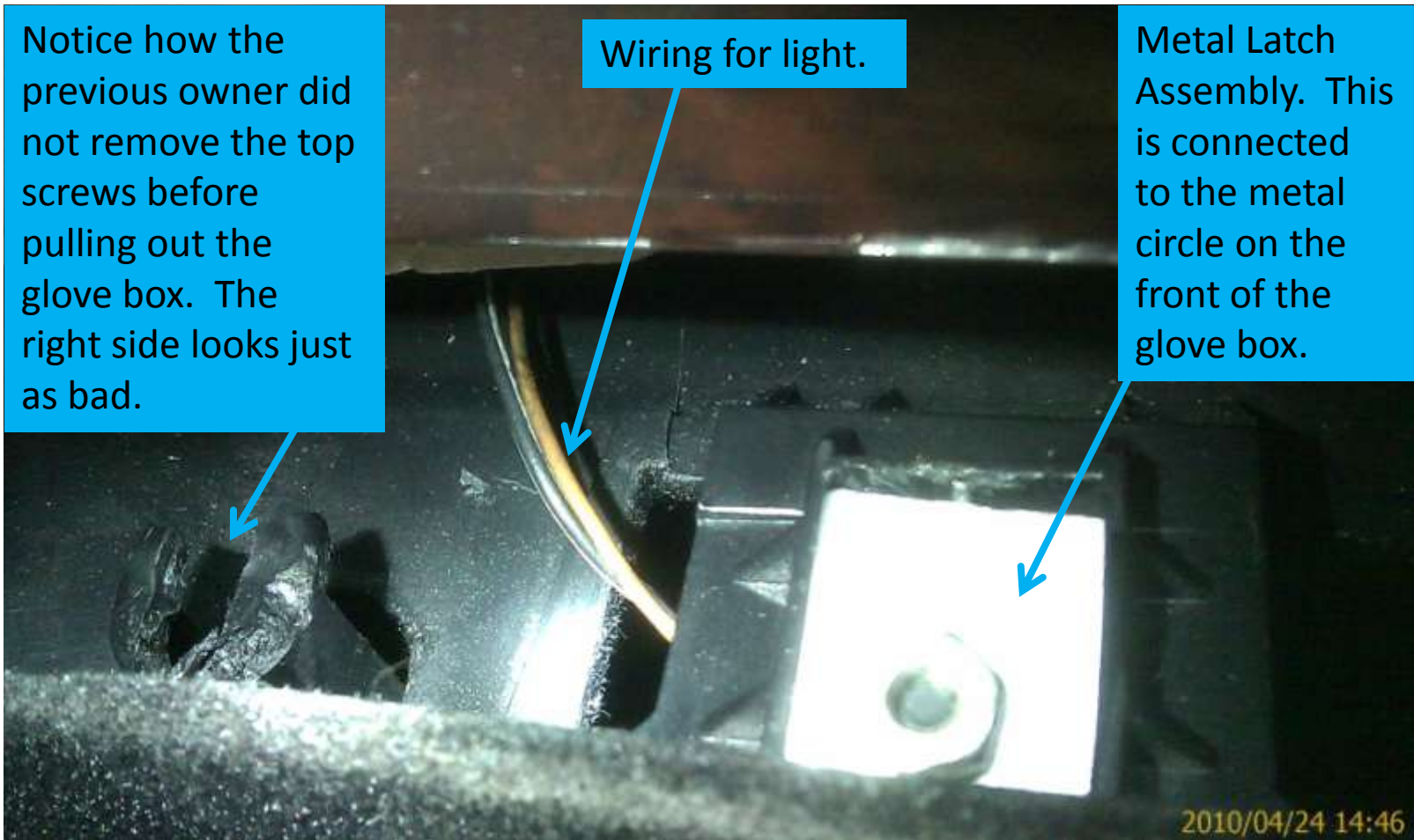
New cabin filters are in. Notice that the new filters have a different end than the original filters. I bought the new filters directly from a Mercedes-Benz dealership (\$35). I would suggest getting the old design cabin filters online at rmeuropean.com or germanautoparts.com if time is not a concern.



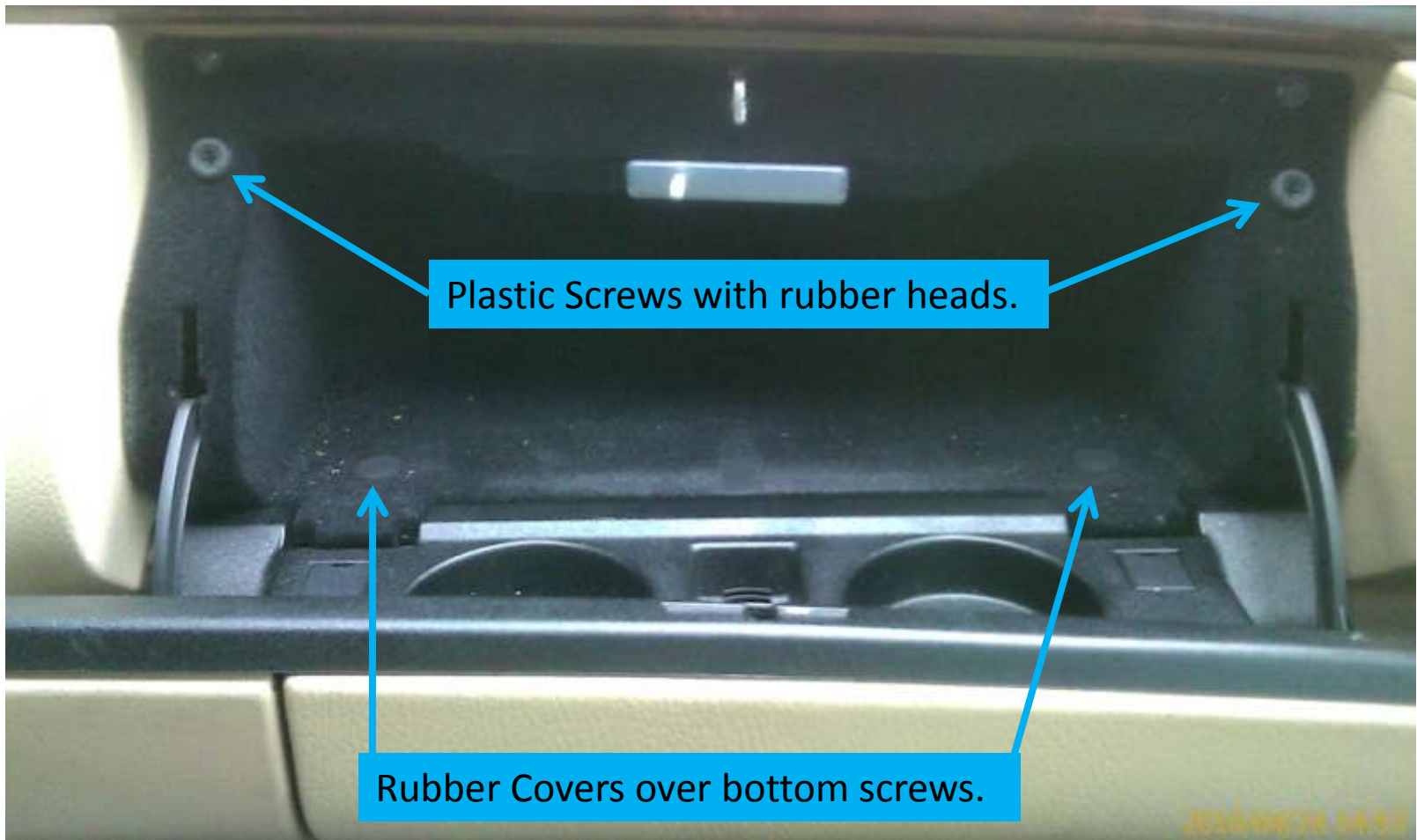
Fit cabin filter door back into place. Insert the two tabs on the right side of the door into the grooves on the right side of the air filter box. Push white lever down.



Put Glove Box back in. Make sure to run the wiring for the light back through the hole to the left of the metal glove box latch. (This is a close-up of the top of the partially installed glove box. Refer to page 8.)



Screw glove box back in. You're Done! By the way, the two plastic screws with rubber heads are meant to keep the glove box door from rattling when they are adjusted to the correct depth.



Part Number: A 210 830 10 18

