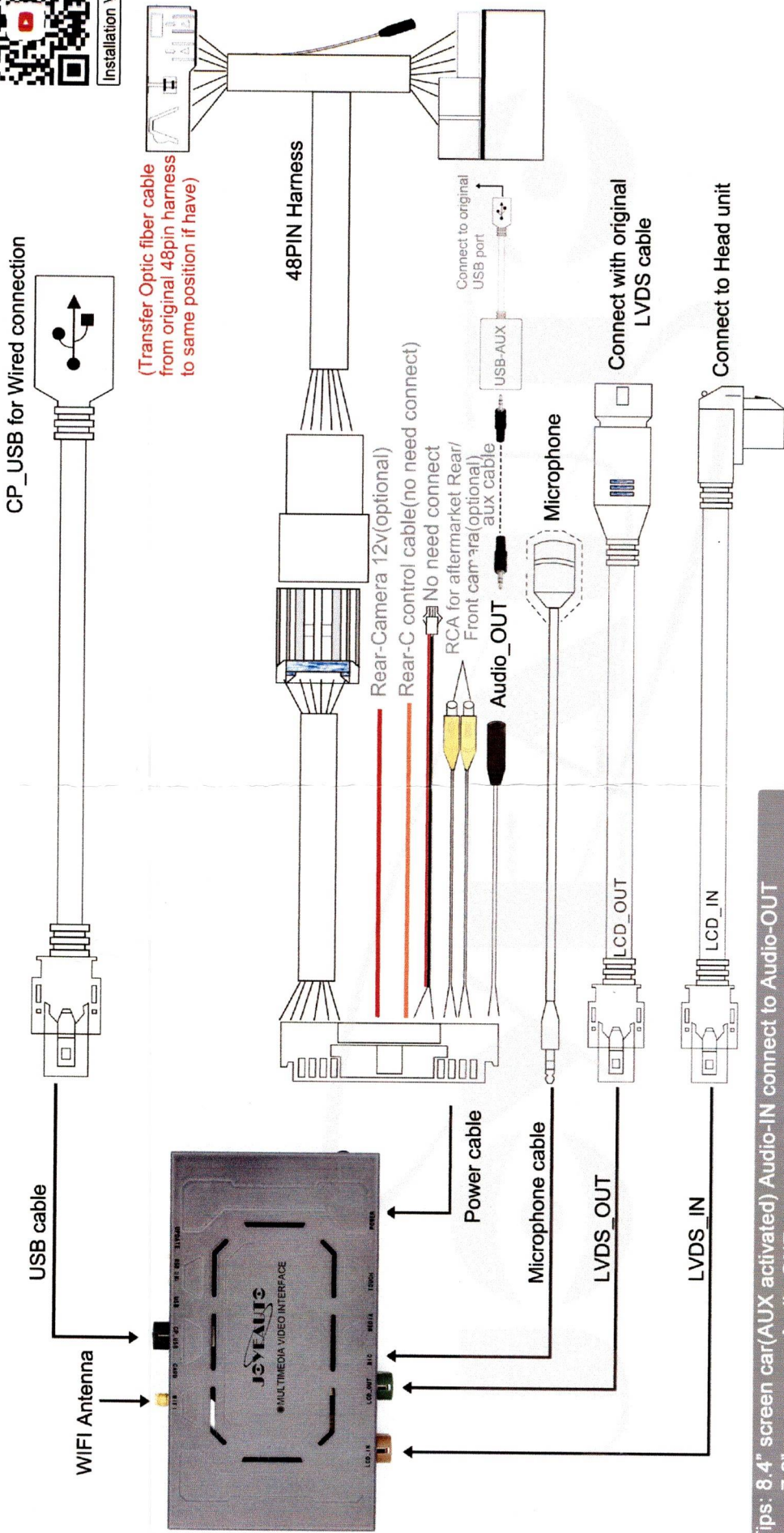


Mercedes NTG5 Wireless CarPlay installation diagram



Installation Video



Joystick knob controls

Press use Siri

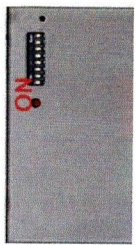
Long press "back" switch to CarPlay, short press use return

Select AUX External before switch to CarPlay

Tips: 8.4" screen car(AUX activated) Audio-IN connect to Audio-OUT
 7.2" screen car Audio-OUT connect to aux-usb adapter, ignore Audio-IN

Dip switch	Status	Description
1,2,3	ON OFF OFF	15-18 C/GLC 8.4"
	OFF OFF OFF	15-18 G/GLC 7.2
	OFF ON OFF	15-18 A/B/E/GLE... 7"
	ON ON OFF	15-18 S class W222
	OFF ON ON	15-18 S W222(if flicker)
	ON	Reverse guideline OFF
4	OFF	Reverse guideline ON
	ON	Original Rear camera
8	OFF	Aftermarket Rear camera
	5, 6, 7 no function, default OFF.	

Dip Switch



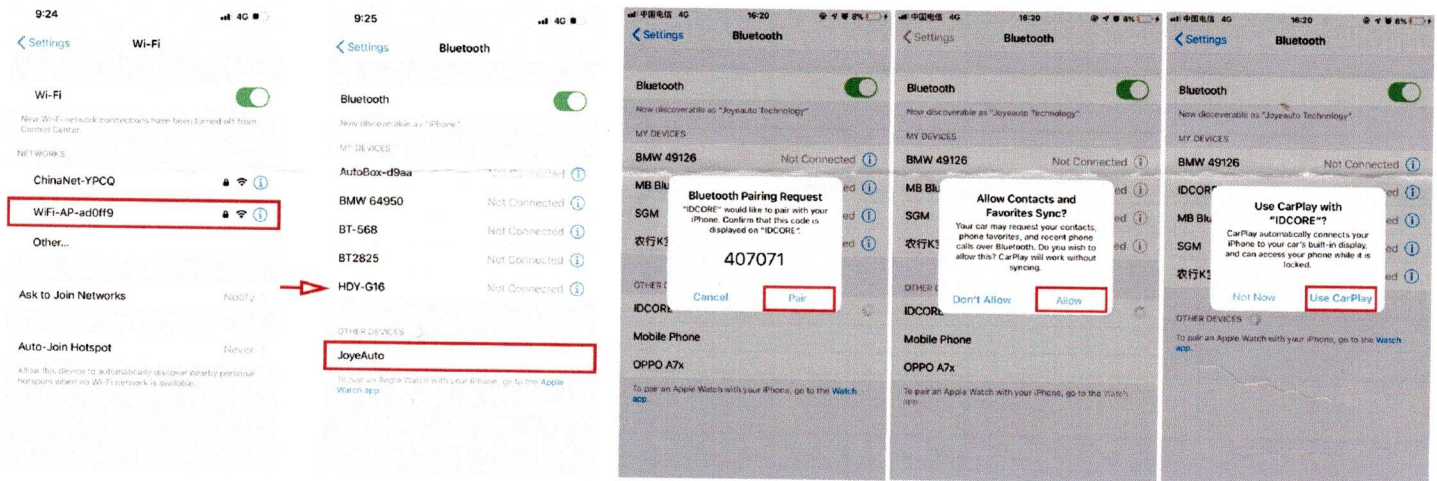
How to Connect JoyeAuto Wireless Apple CarPlay

- 1, Long press specific button(different car with different button,check from installation diagram)switch to JoyeAuto system main menu as below screen(BMW for example)



- 2, Then Turn ON Wi-Fi from iPhone's settings,you will find option of "WiFi-AP-***",but DO NOT connect it, and DON'T connect any network. Turn ON iPhone Bluetooth,get and click "JoyeAuto",then according below steps to get wireless connection.

(If "JoyeAuto" shows connected,but didn't go to carplay,then click Setup ->Bluetooth -> Paired device -> WiFi CarPlay, then iphone will show Use CarPlay request)



- 3, After about 5 seconds, it will Enter Apple CarPlay automatically, then Enjoying...



User Manual
(password: joyeauto*)

Note:

- 1, Besides wireless connection, it works by connect lightning cable also,and Charging the phone at the same time(but need turn OFF iPhone's WiFi at first)
- 2, For more details about user manual please check at www.joyeauto.com. Support-->User Manual (Password "joyeauto**")