

# Mercedes C250 2014

## Clear + LED Side Marker Replacement/Upgrade

### Tools Needed

Flathead Screwdriver  
Needle-Nose Pliers (optional)

### Parts Needed

I purchased these from eBay:

<http://www.ebay.com/itm/DEPO-2012-14-MERCEDES-W204-COUPE-SEDAN-WHITE-LED-CLEAR-BUMPER-SIDE-MARKER-LIGHT-/171513901748?vxp=mtr>

Seller ID: fishcake321

**Cost: ~\$70 shipped**

### Time:

Approx. 15-20min

- 1) **Turn wheel toward opposite side you plan to start with.**



2) Notice the 3 plastic rivet plugs you must remove



**3) Carefully pry each pin away from plug with flathead screwdriver**



**4) Use pliers to pull out each pin (to reduce potential for damage to pin)**





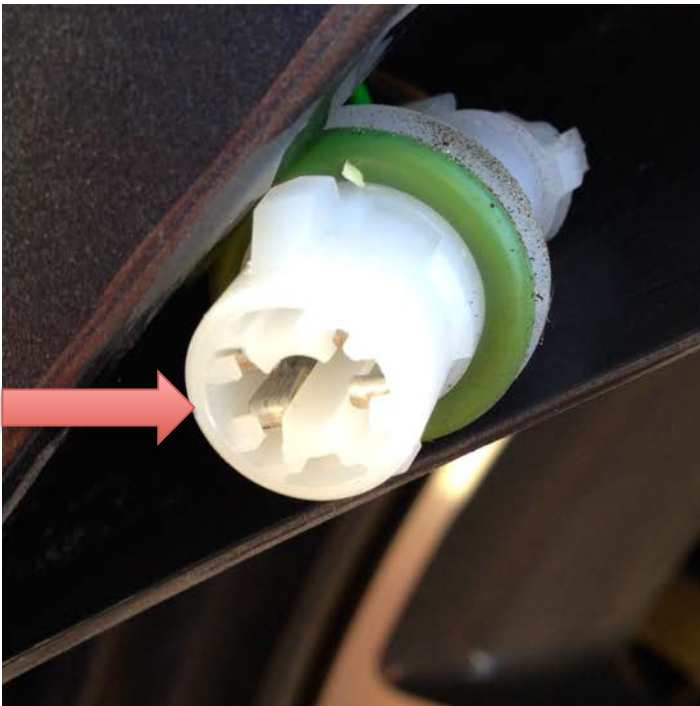
5) Once all 3 plugs are removed, carefully pry back the plastic cover. Note the green and brown wires, they are connected to the light bulb housing you will need unscrew in the next step



6) Reach in and grab the light bulb housing with one hand and gently twist 90 degrees until it unlatches. Try twisting to the left first. It should turn easily. Once out, it will look like this.



7) Pull the bulb out and discard or keep for another project. Note the blade fitting - no need to unscrew the bulb.



8) Now lets remove the ugly orange housing. Reach inside the wheel-well and carefully push the plastic retaining tab at the corner of the housing closest to the rear of the car. It looks like the pic below, so just use your finger or thumb to gently push it toward the front of the car.



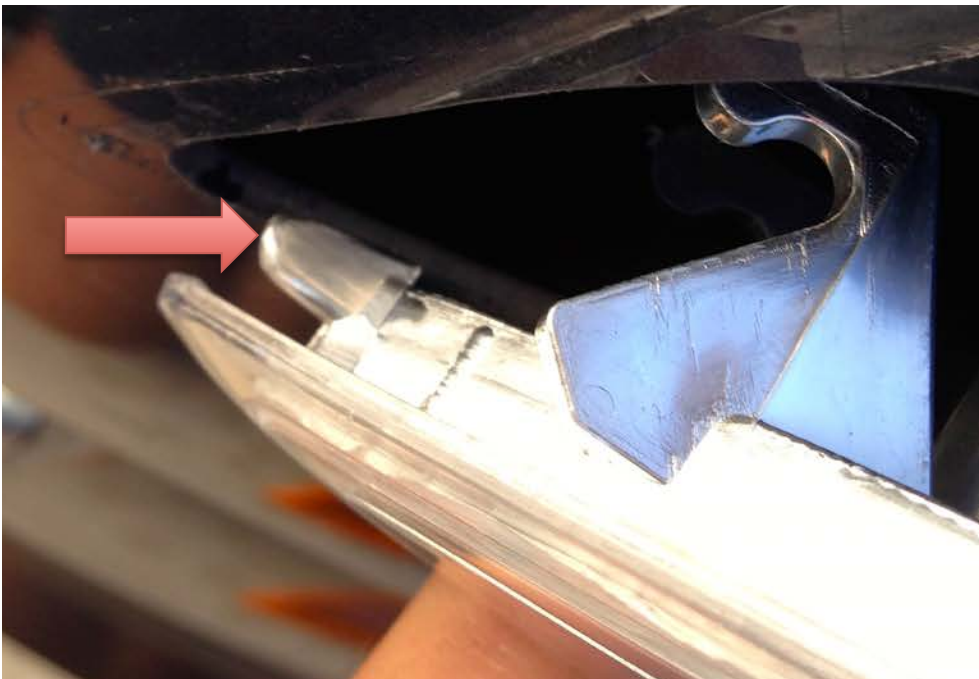
9) Once it is unclipped it will look like this



10) Pull the housing out far enough to clear the clip from the body of the car



11) Now wiggle and pull the housing toward the rear of the car in order to release the front tab





12) Remove the housing. Notice the plastic body still attached inside the fender? Unclip the 2 front feet and pull it out front inside the fender. Clip them back together and store this orange housing in case you ever need to reinstall.



13) This step is the trickiest. You need to insert and hold the new plastic body inside of the fender. First, hook the 2 front feet of the housing as seen above, then make sure to fish the new wiring through the round hole in the plastic backing. Reattach the front of the housing to the fender (carefully!) by the front tab as seen below.





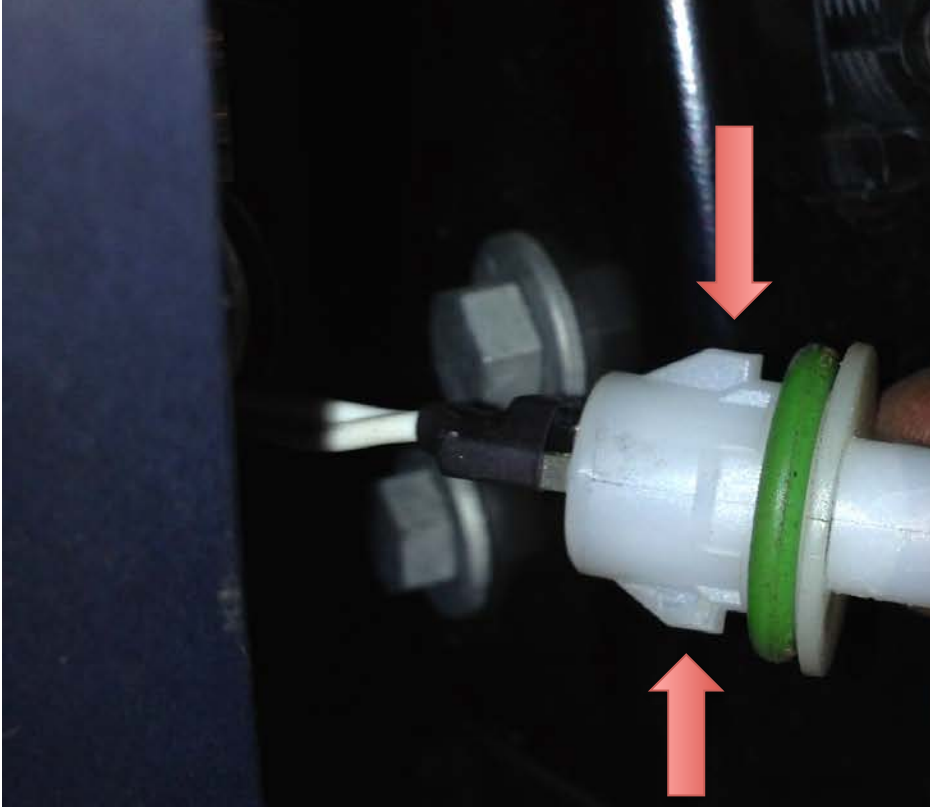
14) Once the 2 feet are hooked and the front clip has been slid securely to the front, then the rear-retaining clip is ready to be pressed until it “clicks”. I recommend pressing gently on the outside of the housing while holding the inside body with your other hand. Don’t press too hard – it should clip together easily. Once it is clipped, you’re almost done. Now, we need to connect the LEDs



15) You should see the wiring coming out the round hole. Now just insert it into the bulb fixture. No need to worry about polarity here – either way it fits will work. Again, be gentle.



**16) Now, you need to reinstall the bulb housing into the LED housing. Notice the 2 tabs on the white plastic housing? These need to be vertical when inserting back into the LED housing. Be gentle and once inserted all the way, a quarter turn (90 degrees) to the right should lock it in place.**



**17) Feel free to turn your car on now and test the LEDs. They should light up with the driving lights turned on. You should not receive any error codes - I didn't. Reassemble the covering and 3 plugs in the wheel-well and you're done with that side.**

18) Perform the same on the other side of the car and you're done. Enjoy your new look!

Before



After



**Disclaimer:**

**These LED lights are not my product; I have no affiliation with the seller.**

**The above notes are not a guide of any kind, they are only my personal installation notes. I will not be held liable for any damage to you, your property or anything else in regard to these notes. If you choose to use them to help you perform an install, great! I wish you success!**

**I have not attempted this installation on any other car or model, so please note, your results and experience may vary. My car is a 2014 C250.**