

the quantity of exhaust gases which are recirculated, is controlled in this way.

gases which are recirculated. In line with this, the ME control unit meters less fuel.

The exhaust gases are recirculated in line with the map stored in the ME control unit as soon as the following conditions are met:

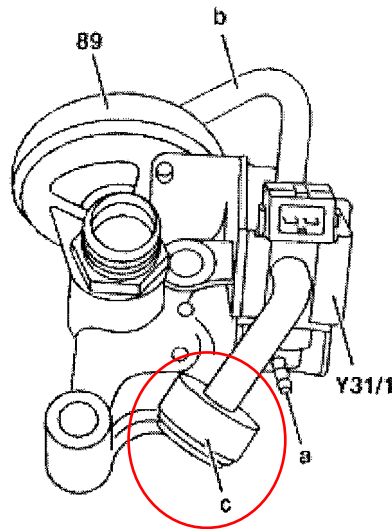
- Coolant temperature between 60°C and 110°C
- Engine speed <3500 rpm
- Partial load.

**Right**

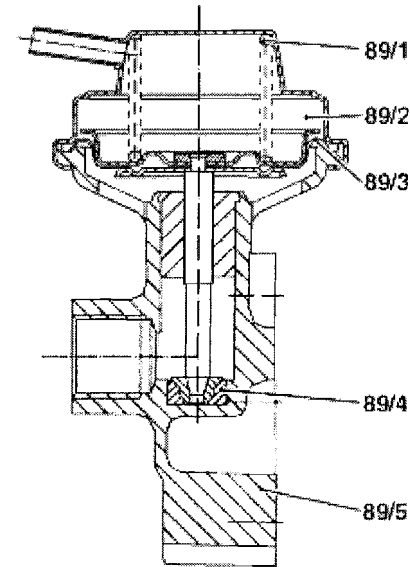
- 89/1 Compression spring
- 89/2 Vacuum reservoir
- 89/3 Diaphragm
- 89/4 Valve seat
- 89/5 Housing

**Left**

- 89 Exhaust gas recirculation valve
- Y31/1 EGR vacuum transducer
- A Vacuum supply from intake manifold
- B Controlled vacuum from EGR [ARF] vacuum transducer to exhaust gas recirculation valve
- c Air admission



P14.20-0249-02



P14.20-0248-02

	ME-SFI control unit position/task/design/function		GF07.61-P-5000F
	Coolant temperature sensor, location/task/design/function		GF07.04-P-5026A
	Crankshaft position sensor, location/task/design/function		GF07.04-P-4116F
	Electronic accelerator/cruise control/idle speed control actuator location/task/design/function		GF30.22-P-4010F