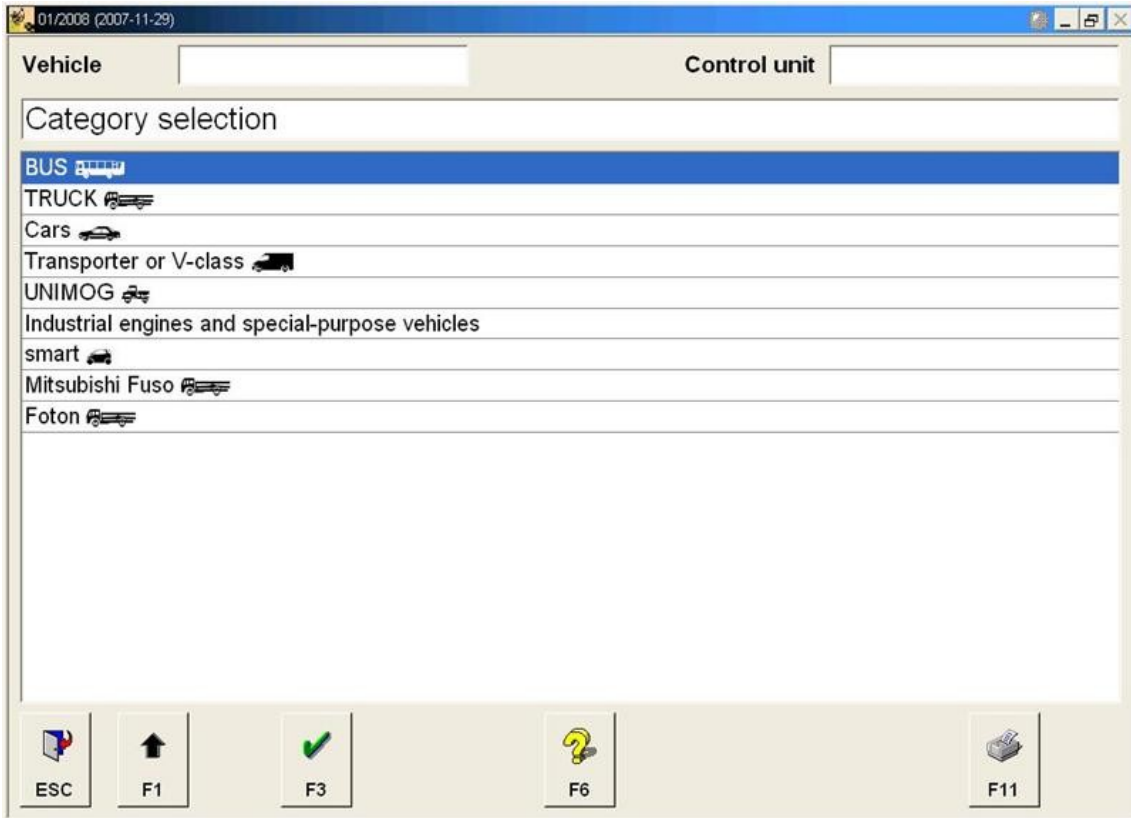
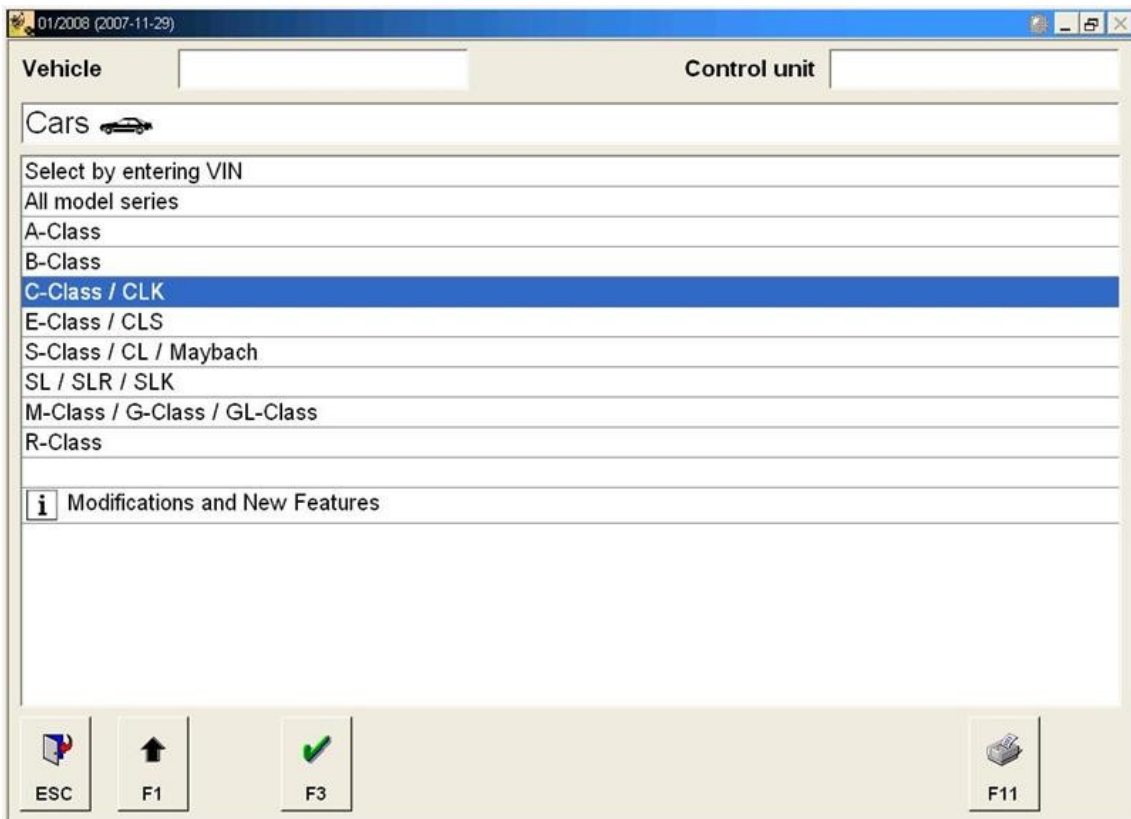


Netherlands Setting - Door Lock Chirp/Confirmation Tone

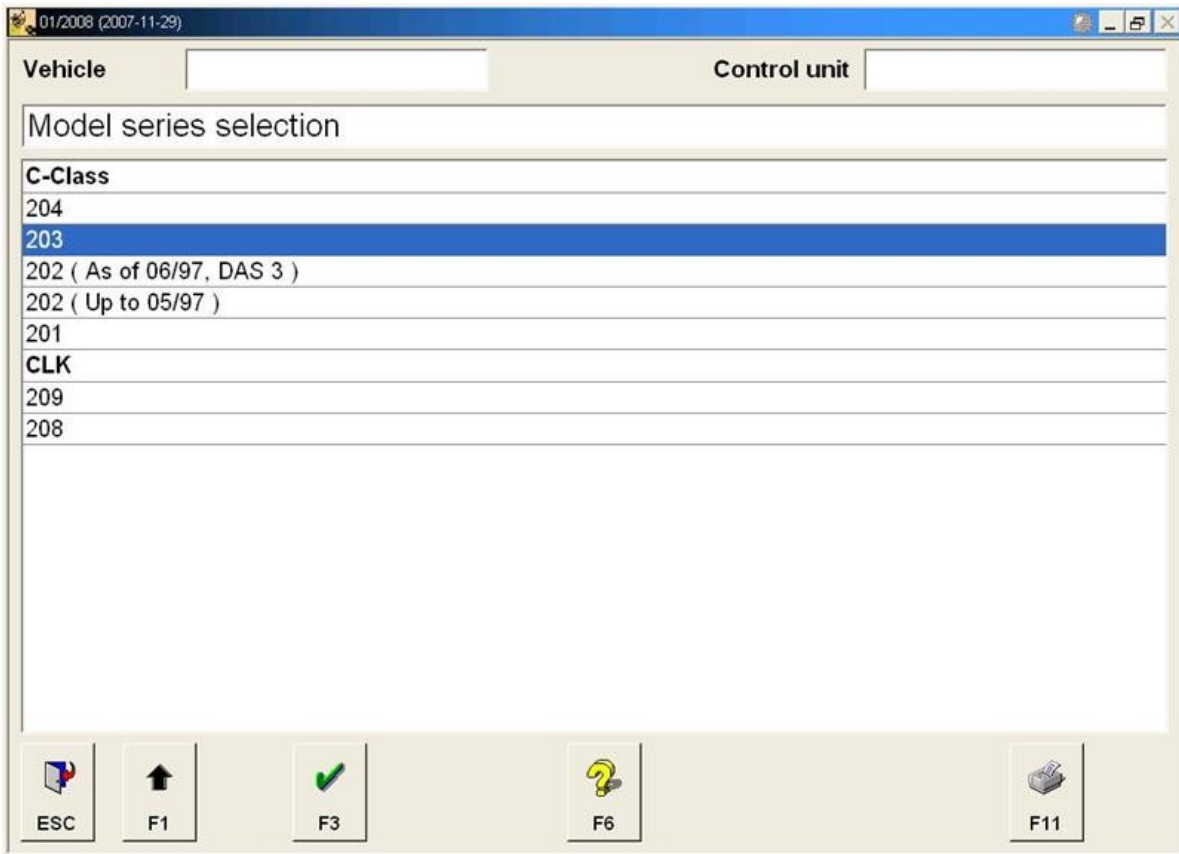
Once the Star DAS is on and ready to go, run the software and choose "Cars".



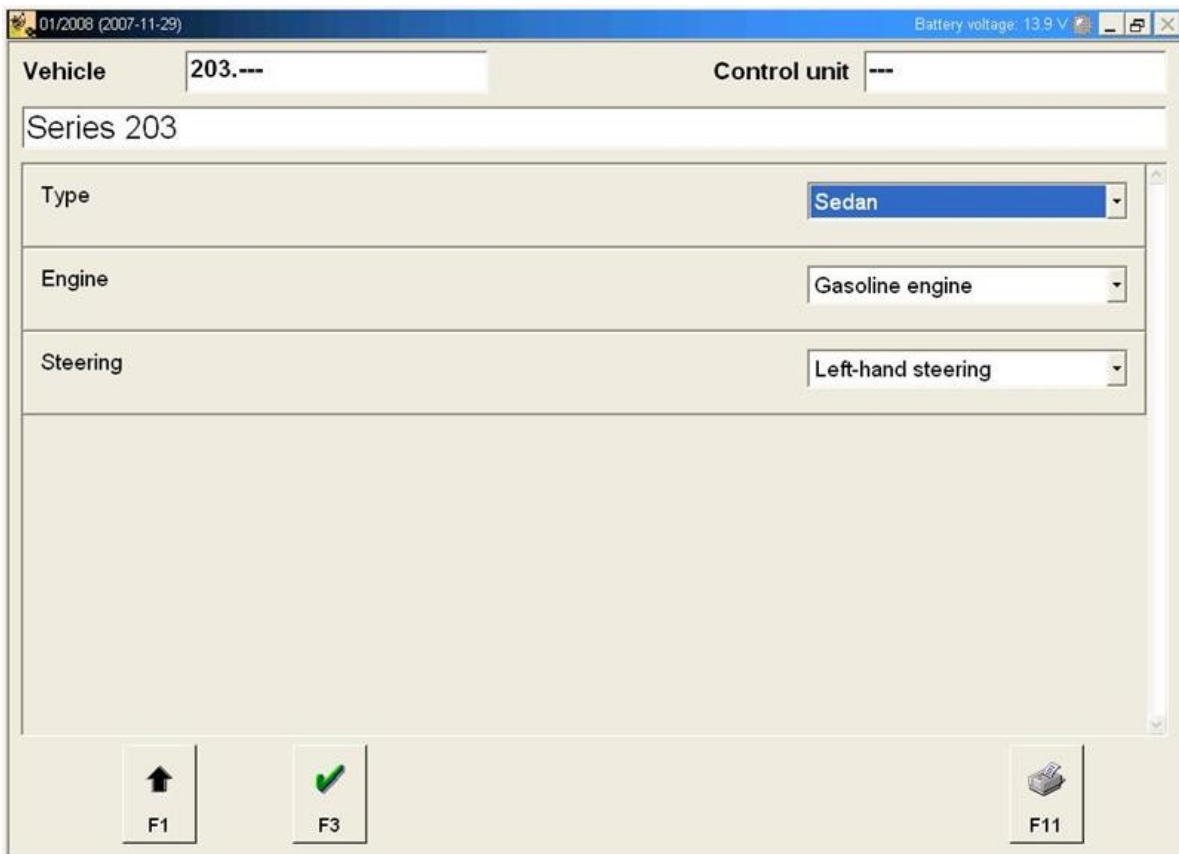
Choose "C-Class / CLK"



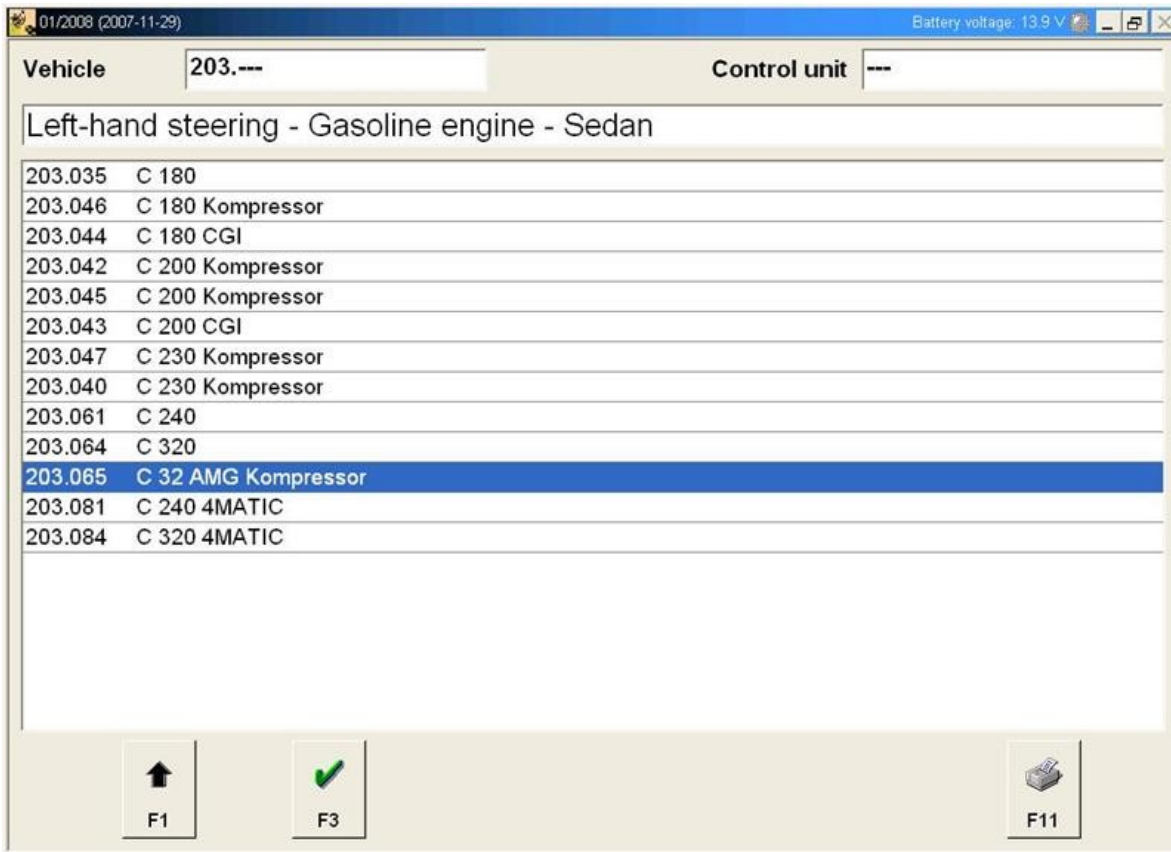
Choose "203"



Hit "F3" to confirm the Series.



Choose "C32 AMG Kompressor" (Or your specific model if its not a C32)



01/2008 (2007-11-29) Battery voltage: 13.9 V

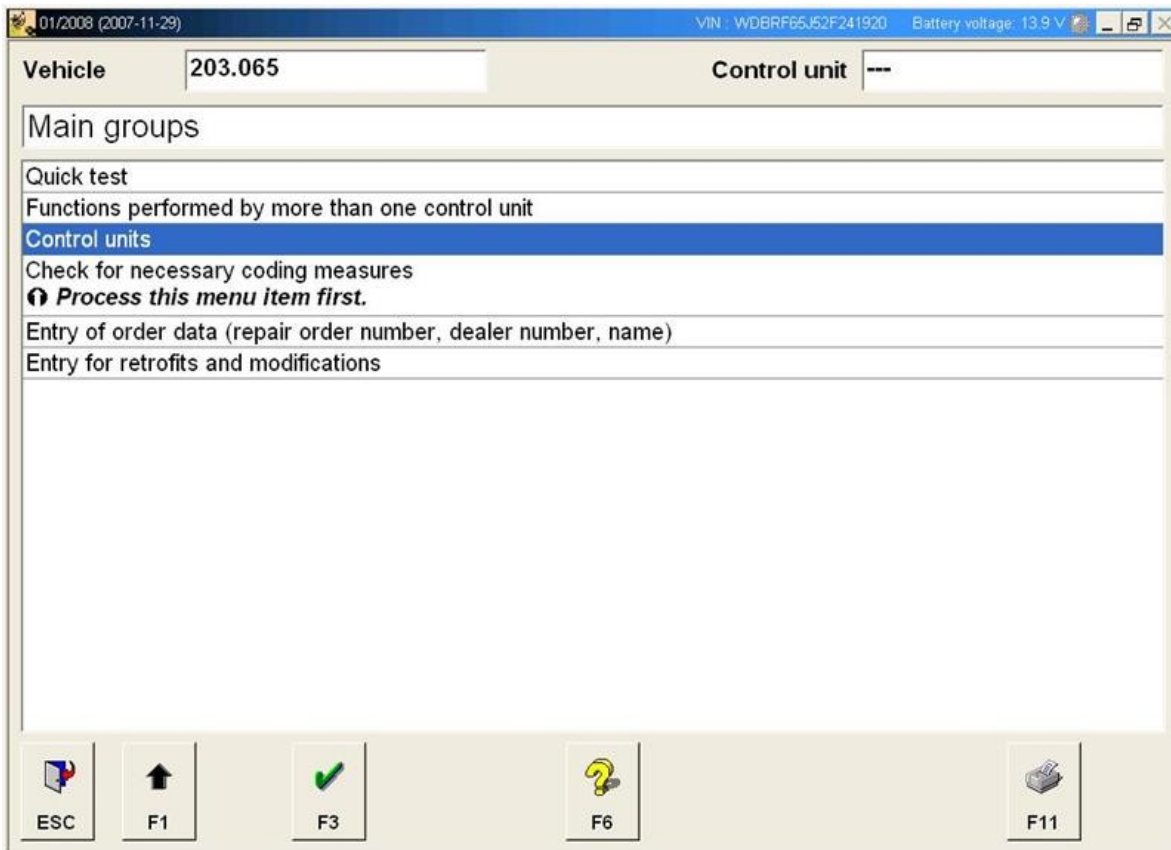
Vehicle: 203.--- Control unit: ---

Left-hand steering - Gasoline engine - Sedan

203.035	C 180
203.046	C 180 Kompressor
203.044	C 180 CGI
203.042	C 200 Kompressor
203.045	C 200 Kompressor
203.043	C 200 CGI
203.047	C 230 Kompressor
203.040	C 230 Kompressor
203.061	C 240
203.064	C 320
203.065	C 32 AMG Kompressor
203.081	C 240 4MATIC
203.084	C 320 4MATIC

F1 F3 F11

Choose "Control Units"



01/2008 (2007-11-29) VIN: WDBRF65J52F241920 Battery voltage: 13.9 V

Vehicle: 203.065 Control unit: ---

Main groups

- Quick test
- Functions performed by more than one control unit
- Control units**
- Check for necessary coding measures
- Process this menu item first.**
- Entry of order data (repair order number, dealer number, name)
- Entry for retrofits and modifications

ESC F1 F3 F6 F11

Choose **"Body"**

The screenshot shows a diagnostic software window with a blue title bar containing the date '01/2008 (2007-11-29)', VIN 'WDBRF65J52F241920', and battery voltage '13.9 V'. Below the title bar, there are two input fields: 'Vehicle' with the value '203.065' and 'Control unit' with the value 'CGW'. The main area is titled 'Control unit groups' and contains a list of categories: Drive, Chassis, Body (highlighted in blue), Information and communication, Seats and doors, and Air conditioning. At the bottom, there is a toolbar with icons for ESC, F1, F3, F6, and F11.

Choose **"Rear SAM"**

The screenshot shows the same diagnostic software window as above. The 'Control unit groups' menu is expanded to show the 'Body' category. Under 'Body', there is a list of modules: EZS - Electronic ignition switch, AB - Airbag, SAM-F - Signal acquisition and actuation module front, REAR SAM - Rear signal acquisition and actuation module (highlighted in blue), HRA-FL - Front left headlamp range control, HRA-FR - Front right headlamp range control, OCP - Overhead control panel, UCP - Upper control panel, LCP - Lower control panel, On-board electrical system (voltage supply), AHE - Trailer recognition, and MSS - Special vehicle multifunction control module. The toolbar at the bottom remains the same.

Choose **"Control unit adaptations"**

01/2008 (2007-11-29) VIN : WDBRF65J52F241920 Battery voltage: 13.9 V

Vehicle 203.065 Control unit REAR SAM

Rear signal acquisition and actuation module

- Control unit version
- Fault codes
- Event memory
- Actual values
- Actuations
- Initial startup
- Control unit adaptations**
- Complete list of guided tests
- Full list of fault codes and events
- Troubleshooting by means of complaints or symptoms

Control unit log

Service information and up-to-date trouble diagnosis

ESC F1 F3 F6 F11

Choose **"National version of ATA function"**

01/2008 (2007-11-29) VIN : WDBRF65J52F241920 Battery voltage: 13.9 V

Vehicle 203.065 Control unit REAR SAM

Read coding and change if necessary.

- National version of ATA function**
- Fuel tank sensor
- Trunk lid Emergency opening
- Remote door unlocking

ESC F1 F3 F11

Select "**Netherlands**" from the drop down list and press "**F3**" to confirm

01/2008 (2007-11-29) VIN : WDBRF65J52F241920 Battery voltage: 13.9 V

Vehicle 203.065 Control unit REAR SAM

National version of ATA function

Which national version is to be coded? Netherlands

i Notes on coding:
Coding cannot be performed if there is a problem with the alarm signal siren (if fault code B1078 is present as a current or stored value).
The coding can only be performed on national versions with the ATA [EDW] function.
Preconditions : EDW Anti-theft alarm system (code 551) is installed

ESC F1 F2 F3