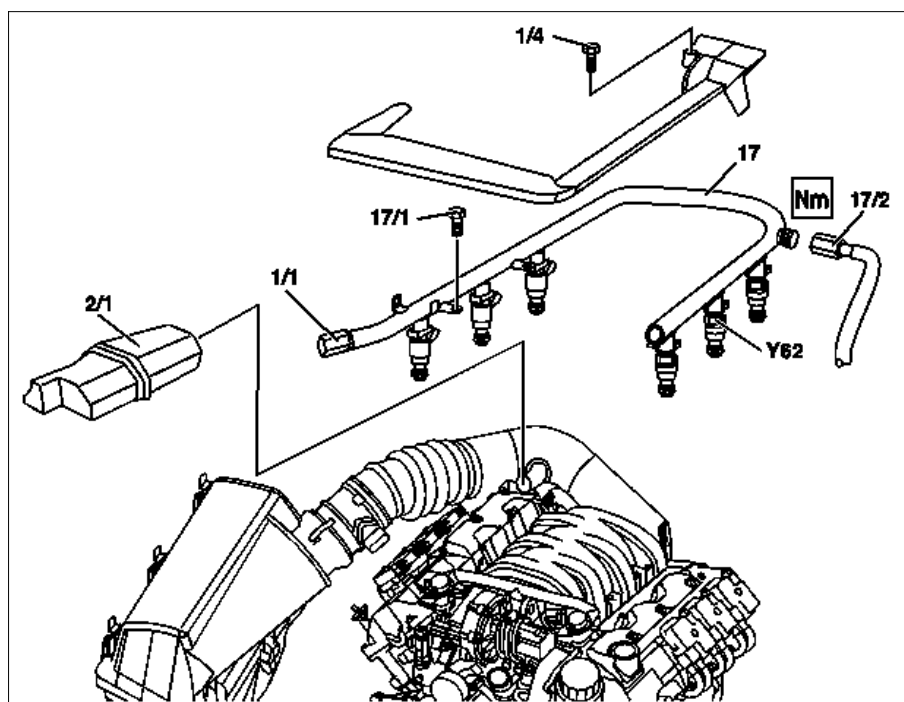


ENGINE 112.910 in MODEL 202.026 /086
 ENGINE 112.920 in MODEL 202.089 /029
 ENGINs 112.921 in MODEL 210.081 /281 /063 /263
 ENGINE 112.923 in MODEL 129.059
 ENGINE 112.940 in MODEL 208.365 /465
 ENGINE 112.941 in MODEL 210.282 /065 /082 /265
 ENGINE 112.942 in MODEL 163.154
 ENGINE 112.943 in MODEL 129.064
 ENGINE 112.970 in MODEL 163.157
 ENGINE 113.940 in MODEL 210.070 /270
 ENGINE 113.961 in MODEL 129.068
 ENGINE 113.980 in MODEL 210.074 /274
 ENGINE 113.944 in MODEL 202.033 /093
 ENGINE 113.942 in MODEL 163.172
 ENGINE 113.943 in MODEL 208.370 /470
 ENGINE 113.984 in MODEL 208.374
 ENGINE 113.981 in MODEL 163.174
 ENGINE 113.965 in MODEL 163.175


Shown on M112

1/1 Service valve
 1/4 Bolt
 2/1 Resonance housing
 17 Fuel distributor
 17/1 Bolts
 17/2 Feed line
 Y62 Fuel injection valves



P07.40-0217-06

	Remove/install		
<div style="display: flex; align-items: center;"> <div style="margin-right: 5px;">⚠</div> Danger! </div>	Risk of explosion caused by fuel igniting, risk of poisoning caused by inhaling and swallowing fuel and risk of injury to eyes and skin caused by contact with fuel	No fire, sparks, open flames or smoking. Only pour fuels into suitable and appropriately marked containers. Wear protective clothing when handling fuel.	AS47.00-Z-0001-01A
1.1	Remove cover on front side of engine	<div style="display: flex; align-items: center;"> <div style="margin-right: 5px;">i</div> Model 129. </div>	
2	Remove cylinder head cover trim panel or air filter	<div style="display: flex; align-items: center;"> <div style="margin-right: 5px;">i</div> Remove cylinder head cover trim or air filter by lifting upwards from the cylinder head covers. </div>	
3.1	Take off resonance housing (2/1)	<div style="display: flex; align-items: center;"> <div style="margin-right: 5px;">i</div> Only on model with air filter attached to vehicle. </div>	
4	Remove plastic cover	<div style="display: flex; align-items: center;"> <div style="margin-right: 5px;">i</div> Remove bolt (1/4). </div>	
5	Release fuel pressure through service valve (1/1)	<div style="display: flex; align-items: center;"> <div style="margin-right: 5px;">i</div> Make sure to collect fuel. </div> <div style="display: flex; align-items: center; margin-top: 5px;"> <div style="margin-right: 5px;">S</div> Pressure hose </div>	*119589046300
6	Detach feed line (17/2)	<div style="display: flex; align-items: center;"> <div style="margin-right: 5px;">i</div> Make sure to collect fuel. </div> <div style="display: flex; align-items: center; margin-top: 5px;"> <div style="margin-right: 5px;">i</div> M112: ↓ </div> <div style="display: flex; align-items: center; margin-top: 5px;"> <div style="margin-right: 5px;">Nm</div> </div> <div style="display: flex; align-items: center; margin-top: 5px;"> <div style="margin-right: 5px;">i</div> M113: ↓ </div> <div style="display: flex; align-items: center; margin-top: 5px;"> <div style="margin-right: 5px;">Nm</div> </div>	*BA07.52-P-1001-01A *BA07.52-P-1001-01A
7	Separate electrical connector at fuel injection valves (Y62)		

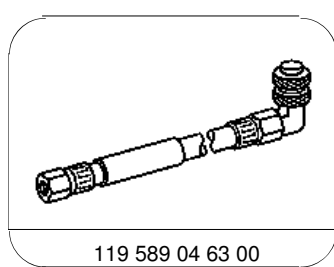
8	Take out screws (17/1), lift fuel rail (17) together with all injectors off the intake manifold	<i>i</i> Inspect O-rings for damage. <i>i</i> Oil O-rings before installing the fuel rail. ↓ Remove/install injection valves (ME-SFI)	AR07.03-P-6520A
	Checking		
9	Test fuel injectors (Y62)	<i>i</i> Refer to DMAN Engine, Volume 4, Index 31/1	
10	Install in the reverse order		

Fuel distributor

Number	Designation	Engine 112 except 112.945/951/ 960/961
BA07.52-P-1001-01A	Fuel feed line to fuel distributor	Nm 38

Fuel distributor

Number	Designation	Engine 113.940/941/ 942/943/944/ 945/946/948/ 960/961/962/ 963/964/965/ 966/967/968/ 969/971/980/ 981/982/984/ 986/988
BA07.52-P-1001-01A	Fuel feed line to fuel distributor	Nm 38



119 589 04 63 00

Pressure hose