

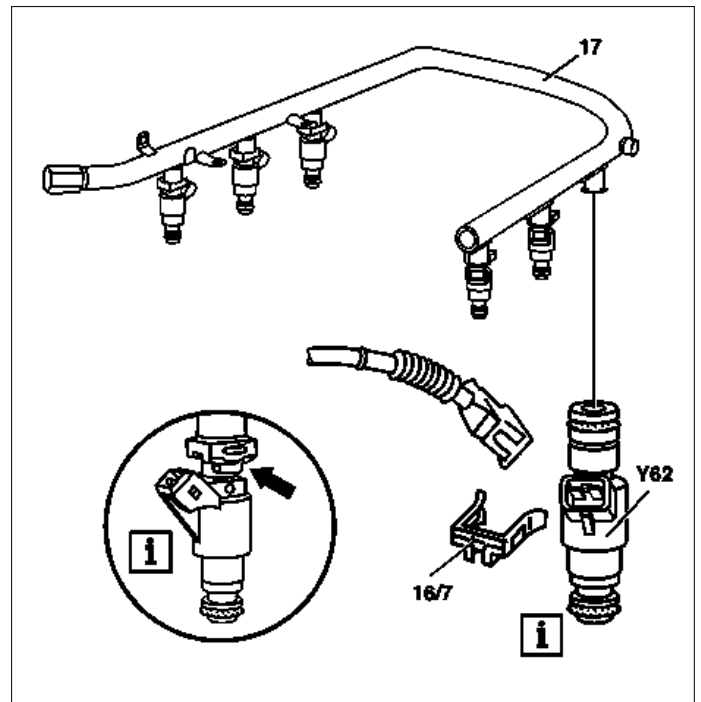
ENGINE 112.910 in MODEL 202.026 /086  
 ENGINE 112.920 in MODEL 202.089 /029  
 ENGINE 112.921 in MODEL 210.081 /281 /063 /263  
 ENGINE 112.922 in MODEL 220.063 /163  
 ENGINE 112.923 in MODEL 129.059  
 ENGINE 112.940 in MODEL 208.365 /465  
 ENGINE 112.941 in MODEL 210.282 /065 /082 /265  
 ENGINE 112.942 in MODEL 163.154  
 ENGINE 112.943 in MODEL 129.064  
 ENGINE 112.944 in MODEL 220.165 /065  
 ENGINE 113.940 in MODEL 210.070 /270  
 ENGINE 113.941 in MODEL 220.070 /170  
 ENGINE 113.960 in MODEL 215.375, 220.075 /175  
 ENGINE 113.961 in MODEL 129.068  
 ENGINE 112.945, 113.962 /982 in MODEL 463  
 ENGINE 113.980 in MODEL 210.074 /274  
 ENGINE 113.944 in MODEL 202.033 /093  
 ENGINE 113.942 in MODEL 163.172  
 ENGINE 113.943 in MODEL 208.370 /470  
 ENGINE 113.984 in MODEL 208.374  
 ENGINE 113.981 in MODEL 163.174  
 ENGINE 112.912 in MODEL 203.061 /261, 209.361 /461  
 ENGINE 112.946 in MODEL 203.064 /264  
 ENGINE 112.947 in MODEL 170.465  
 ENGINE 112.960 in MODEL 170.466  
 ENGINE 112.961 in MODEL 203.065 /265  
 ENGINE 113.963 in MODEL 230.475  
 ENGINE 113.968 in MODEL 209.375 /475  
 ENGINE 112.913 in MODEL 211.061 /261  
 ENGINE 112.949 in MODEL 211.065 /265  
 ENGINE 113.967 in MODEL 211.070 /270  
 ENGINE 113.992 in MODEL 230.474  
 ENGINE 113.987 in MODEL 209.376 /476  
 ENGINE 112.955 in MODEL 209.365 /465  
 ENGINE 112.916 in MODEL 203.081 /281  
 ENGINE 112.953 in MODEL 203.084 /284  
 ENGINE 112.970 in MODEL 163.157  
 ENGINE 113.965 in MODEL 163.175  
 ENGINE 113.990 in MODEL 211.076 /276  
 ENGINE 113.991 in MODEL 215.374, 220.074 /174  
 ENGINE 112.973 in MODEL 230.467  
 ENGINE 112.972 in MODEL 220.067 /167  
 ENGINE 112.975 in MODEL 220.087 /187  
 ENGINE 113.948 in MODEL 220.083 /183  
 ENGINE 113.966 in MODEL 220.084 /184  
 ENGINE 112.917 in MODEL 211.080 /280  
 ENGINE 112.954 in MODEL 211.082 /282  
 ENGINE 113.969 in MODEL 211.083 /283  
 ENGINE 113.988 in MODEL 203.076 /276  
 ENGINE 113.989 in MODEL 171.473  
 ENGINE 113.995 in MODEL 230.472

**Shown on engine 112**

16/7 Anti-twist lock  
 17 Fuel distributor

Y62 Fuel injection valves

Arrow: Square catch



P07.40-0218-12

☒ ☒	Remove/install		
1	Remove fuel distributor (17) together with the fuel injectors (Y62)	Model 129.059/ 064/ 068 Model 163.154/ 157 / 172/ 174/ 175 Model 202.026/ 029/ 033/ 086/ 089/ 093 Model 208.365 /370 /374 /465 /470 Model 210.063 /065 /070 /074 /081 /082 /263 /265 /270 /274 /281 /282 Model 170.465 /466 Model 171.473 Model 203.061 /261 /064 /065 /076 /081 /084 /264 /265 /276 /281 /284 Model 209 Model 211.061 / 065 / 070 / 076 / 080 / 082 / 083 / 261 / 265 / 270 / 276 / 280 / 282 / 283 Model 215.374/ 375 Model 220.063 /065 /067 /070 /074 /075 /083 /084 /087 /163 /165 /167 /170 /174 /175 /183 /184 /187 Model 230 Engine 112.945, 113.962 in model 463 Engine 113.982 in model 463.241 /243 /246 ⓘ Check O-rings for damage otherwise this can lead to leakage. Before installing fuel injection valves (Y62) lubricate O-rings. ⓘ Anti-twist locks (16/7) must latch into the square catch (arrow) of the fuel injection valves (Y62).	AR07.03-P-1451A  AR07.03-P-1451AA           AR07.03-P-1451AG
2	Install in the reverse order		