

## Installation notes for KLEEMANN M272 V6 Tubular Header



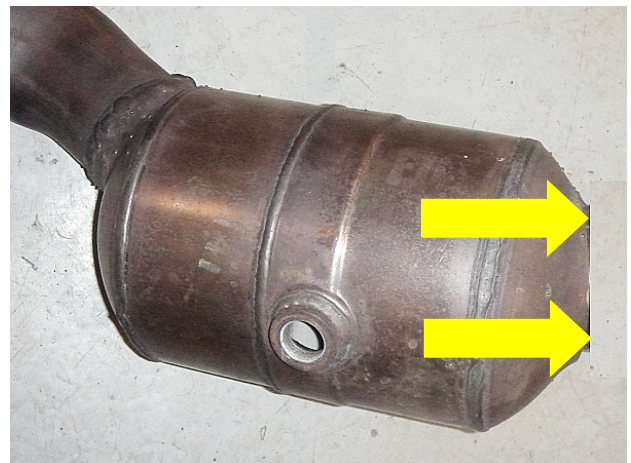
The kits contain:

- 2 headers
- 2 down-pipe connectors
- Gaskets
- Copper nuts
- Bolts

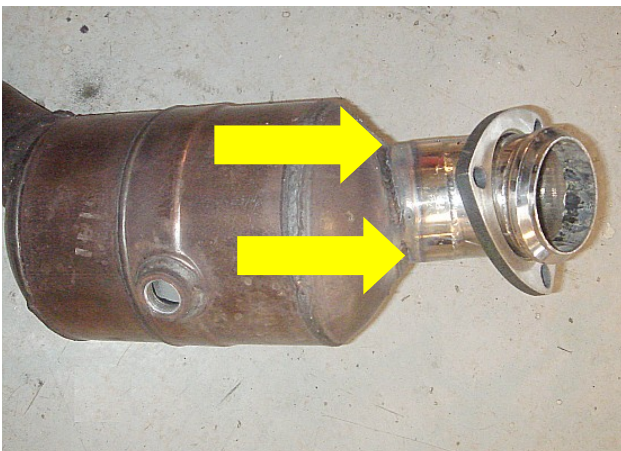
Kit shown fits R171 SLK 280/350 LHD

### Installation procedure

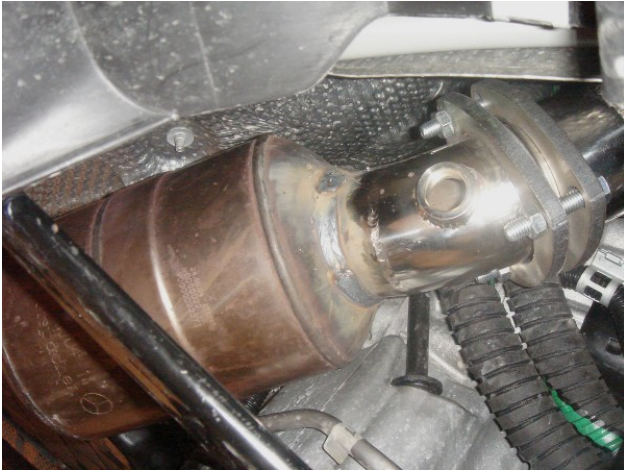
1. Remove OE header from the car (not shown)
2. Discard old gaskets, nuts and bolts
3. Mount KLEEMANN headers with new gaskets and copper nuts.
4. If required, make room for header by modifying OE heat shields.
5. Check for sufficient clearance to steering column or other vehicle components



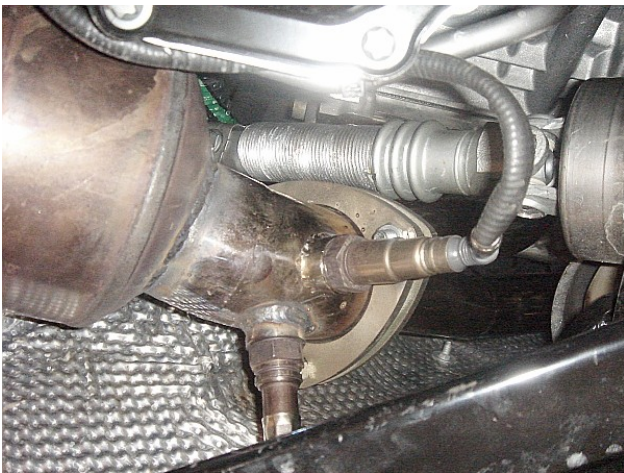
6. Remove middle section of OE exhaust system
7. Cut connector flange of primary OE cat right where pipe meets cat body.



8. Temporarily re-mount middle section of OE exhaust system
9. Temporarily attach KLEEMANN down-pipe connector to header
10. **Important notice:** Depending on the application, it might be necessary to close any remaining gaps in the exhaust system with suitable sections of pipes.
11. Check for sufficient clearance to steering column or other vehicle components.
12. Determine final position of down-KLEEMANN down-pipe connector in relation to primary cat
13. Attach connector to cat with a few welding spots
14. Remove middle section of OE exhaust system
15. Complete welding of down-pipe connector onto the OE cat, as well as any other pipe sections you might have inserted.



16. Mount modified OE exhaust
17. Attach exhaust to KLEEMANN header



18. Insert oxygen sensors.
19. Check for sufficient clearance to steering column or other vehicle components
20. Start up engine and let it idle on the lifting platform.
21. Check for any gas leaks and improper welding while car is on the lifting platform

**Important notice:**  
No need to switch off any oxygen sensors or reprogramming of ECU. .