



**DTB**

Date: September 25, 2008  
 Order No.: P-B-88.70/77  
 Supersedes:  
 Group: 88

**SUBJECT: All Model 171, 204, 211, 219 and 230 Vehicles  
 Up To Mirror Production 2/6/2008  
 Electric Folding Outside Mirror Makes Noise While Extending or Retracting**

If you receive customer reports in the above model vehicles where mirrors are noisy during extending or retracting, at cold temperatures (< 59°F), the electric folding outside mirror (code 500) may make a creaking noise **during** the folding sequence. Perform the following procedure to resolve.

1. Remove outside mirror trim. Refer to WIS document AR88.70-P-9040 (V 171), (CW 204), (T & TM 211), (TX 219) or (RA 230)
2. Determine mirror production date (Figure 1 - 204 on harness tag and Figure 2 – other models on motor label).



Figure 1 P-B-88.70/77

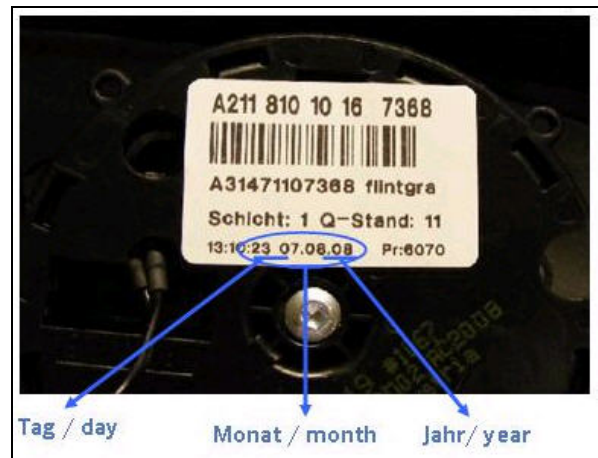


Figure 2 P-B-88.70/77

This bulletin has been created and maintained in accordance with MBUSA-SLP S423QH001, Document and Data Control, and MBUSA-SLP S424HH001, Control of Quality Records.

3. Grease retaining washer in area of slots (Figure 3).
4. Drill hole (3 mm diameter) at a height of 3 cm (Figure 4).

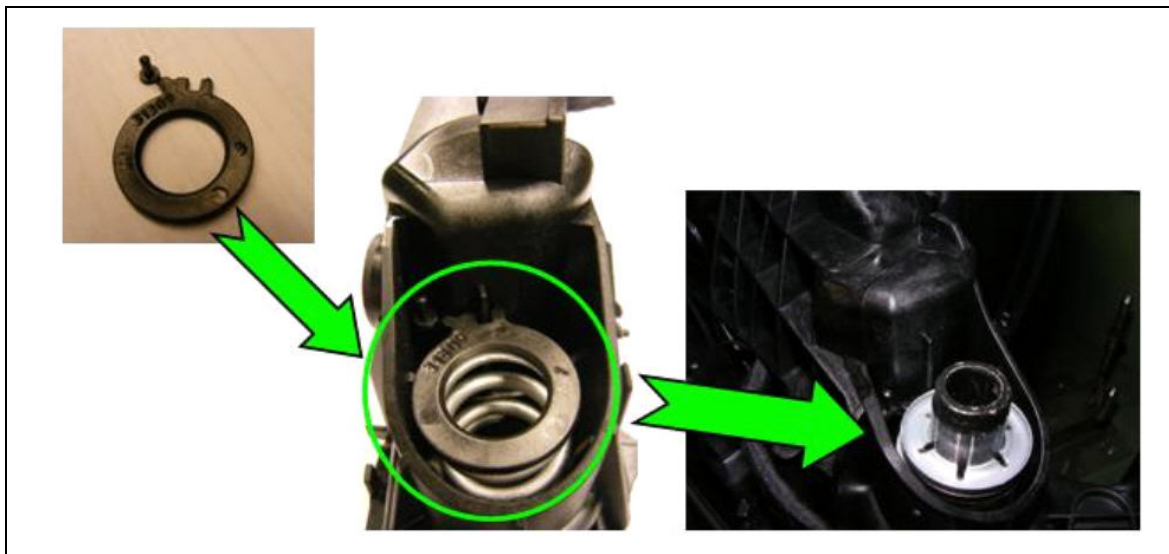


Figure 3

P-B-88.70/77

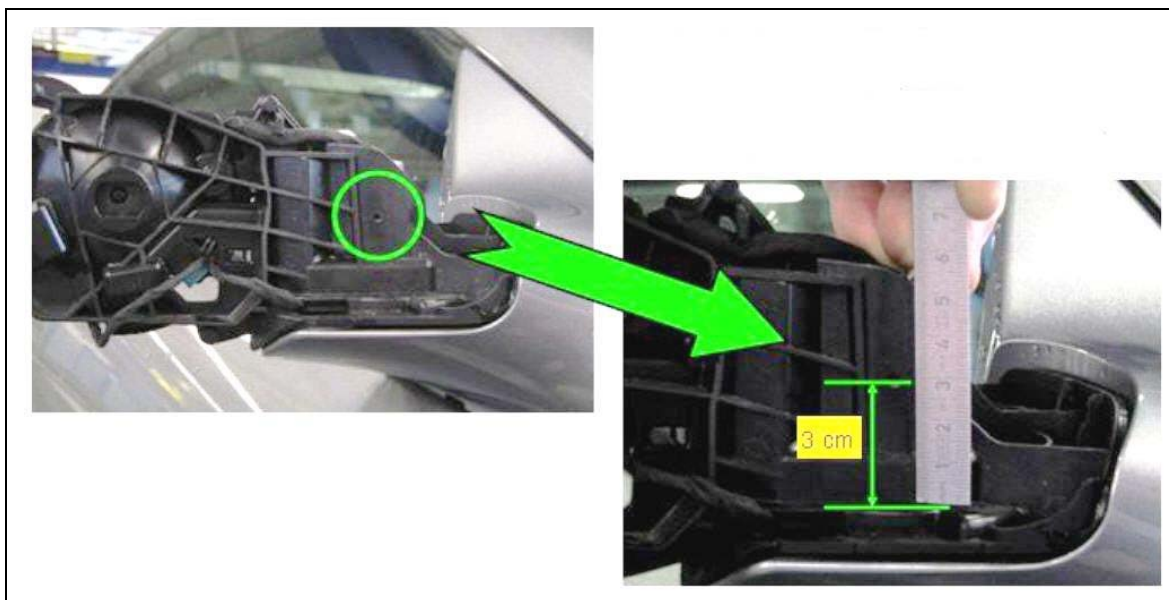


Figure 4

P-B-88.70/77

5. Grease the sliding disk. It must be greased with the outside mirror in three positions (folded in, intermediate position and folded out – Figures 5 and 6).
6. Operate outside mirrors electrically several times (approx. 8 times).
7. Install outside mirror trim. Refer to WIS document AR88.70-P-9040 (V 171), (CW 204), (T & TM 211), (TX 219) or (RA 230).

**i** **Note:** In the event of complaints, repair both outside mirrors!

**i** **Note:** For the complaint of high pitched squeak noise after mirror movement, at the present time no

remedy is available. Do not replace any parts.



Figure 5

P-B-88.70/77



Figure 6

P-B-88.70/77

## Parts Information

Qty.	Part Name	Part Number
1	Special sliding compound spray	A000 989 35 60 <sup>1</sup>

<sup>1</sup> Sufficient for 2 cars, Submit as Local Purchase – AFS01294, Qty 1, handling is included

**i** **Note:** The following allowable labor operations should be used when submitting a warranty claim for this repair. This information has been generated on September 25, 2008. Please refer to Netstar → Star TekInfo → Star Time for the most current labor time allowance.

### In Case of Warranty

**Operation:** Outside rear view mirror housing cover – left, R&R (88-3424)  
 Outside rear view mirror housing cover – right, R&R (88-3427)  
 Outside rear view mirror modification – left (88-0000)  
 Outside rear view mirror modification – right (88-0000)

Damage Code	Operation Number	Time (hrs.)	Model Indicator (s)
81B18 42 (left mirror)	88 3424	0.2 hrs.	T1, T2, T3, T4, T5, T6, T7, T8, TC, U2, U3, U4, U5, U7
		0.4 hrs.	CA, CB, CC, CD, T9, TA, TB, U6, X1, X2, X3, X4,
		0.5 hrs.	Y1, Y2, Y4
		0.7 hrs.	Y3
		1.0 hrs.	R1, R2, R3, R4, R5, R6, R7, R8
	88 0000	0.1hrs *	CA, CB, CC, CD, R1, R2, R3, R4, R5, R6, R7, R8, T2, T3, T4, T5, T6, T7, T8, T9, TA, TB, TC, U2, U3, U4, U5, U6, U7, Y1, Y2, Y3, Y4, X1, X2, X3, X4
81P18 42 (right mirror)	88 3427	0.2 hrs	T1, T2, T3, T4, T5, T6, T7, T8, TC, U2, U3, U4, U5, U7
		0.4hrs	CA, CB, CC, CD, T9, TA, TB, U6, X1, X2, X3, X4,
		0.5 hrs	Y1, Y2, Y4
		0.7 hrs	Y3
		1.0 hrs	R1, R2, R3, R4, R5, R6, R7, R8
	88 0000	0.1hrs *	CA, CB, CC, CD, R1, R2, R3, R4, R5, R6, R7, R8, T2, T3, T4, T5, T6, T7, T8, T9, TA, TB, TC, U2, U3, U4, U5, U6, U7, Y1, Y2, Y3, Y4, X1, X2, X3, X4

\*Maximum time allowed with a separate time punch. Ensure that punches are labeled as NON