



Mercedes-Benz

The 2009 C-Class





## The C-Class

<b>INTRODUCTION</b>	2
<b>AGILITY</b>	4
Engines	6
Transmissions	8
Suspension	10
<b>4MATIC™</b>	12
<b>COMFORT</b>	14
Cockpit	16
Seat comfort	18
Entertainment	20
Control and display systems	22
<b>SAFETY</b>	24
<b>PERFORMANCE</b>	
AMG	30
<b>COLOURS AND MATERIALS</b>	
Paint, combination options	32
Upholstery and trim	34
<b>EQUIPMENT</b>	
Equipment listing	36
Premium Packages	39
Accessories	40
<b>TECHNICAL FEATURES</b>	
Technical data	42
<b>MERCEDES-BENZ OWNERSHIP AND WEBSITE</b>	43
<b>TEST DRIVE</b>	44



## Even the road will feel your heart accelerating.

Asphalt may be no feast for the eyes, but it's been getting Mercedes-Benz drivers excited for over 120 years. That same passion for the road was the inspiration for our latest interpretation of driving pleasure.

From the interior to the latest innovations in drive technology, few cars can compete with the C-Class' ability to adjust so many facets of its character. Its capacity for meeting personal needs is beyond comparison and it adapts to external conditions with speed and precision. The keys to this flexible driving response are the standard-fit AGILITY CONTROL steering, suspension and selective damping.

With a range of exceptional engines and transmissions to choose from, the C-Class will suit the most discerning of tastes. You'll find that the upgraded interior offers noticeably more space and a more distinctive atmosphere thanks to luxurious materials, intuitive controls and an advanced cockpit design.

With its dynamic grille and exquisite body design, the C-Class is the perfect embodiment of the Mercedes-Benz philosophy. With front, side and rear body panelling, the AMG Styling Package<sup>1</sup> gives the car an even sportier and more powerfully dynamic look.

<sup>1</sup>Standard on the C300, C350 and C63 AMG models. Available as part of the Sport Package on C230 models.









## As nimble as it is quick.

The C-Class is an authoritative presence that demands attention. Taut lines lend an air of effortless superiority. The distinctive rear section and wide radiator grille establish its dominance on the road. But looks are only part of the story.

You'll find that the C-Class is equipped with innovative technical systems that deliver a driving experience unequalled in its class. Among the highlights is the AGILITY CONTROL suspension. Its selective damping system makes automatic, continuous adjustments to the suspension set-up in accordance to the ever-changing conditions of the road. This makes for a consistently enjoyable ride no matter what curves are thrown at you.

Handle the weather as easily as the winding road by choosing our award-winning 4th-generation 4MATIC™ permanent all-wheel drive system available on all C-Class models. 4MATIC™ not only improves grip on slippery roads as a measure of proactive safety but offers a noticeably more dynamic driving experience on dry roads.



## Energy meets synergy, power meets confidence.

Exceptionally smooth and refined, the C-Class' two DOHC V-6 engines have a passion for performance. The lightweight alloy construction reduces weight, improving vehicle stability and fuel efficiency. These power plants also boast continuously variable timing of the intake and exhaust valves with an advanced system that optimizes the engine's breathing at every rpm range. This means a broad, flat torque curve as well as lower emissions. It's always a smooth ride thanks to a unique balancer shaft that ensures quieter engine operation and reduces overall vibrations.

### **C230 2.5-LITRE V-6**

201 hp and 181 lb-ft of torque make for outstanding responsiveness. Variable valve timing bestows it with an incredibly broad power band for swift acceleration and passing performance.

### **C300 3.0-LITRE V-6**

228 hp and 221 lb-ft of torque assures you rapid response whether taking off from a stop or merging onto a crowded highway.

### **C350 3.5-LITRE V-6**

268 hp and 258 lb-ft of torque add up to outstanding agility and performance, making for an incomparable driving experience.

### **C63 AMG 6.2-LITRE V-8**

451 hp and 443 lb-ft of torque means our most powerful C-Class offers tremendous performance for any driving situation.







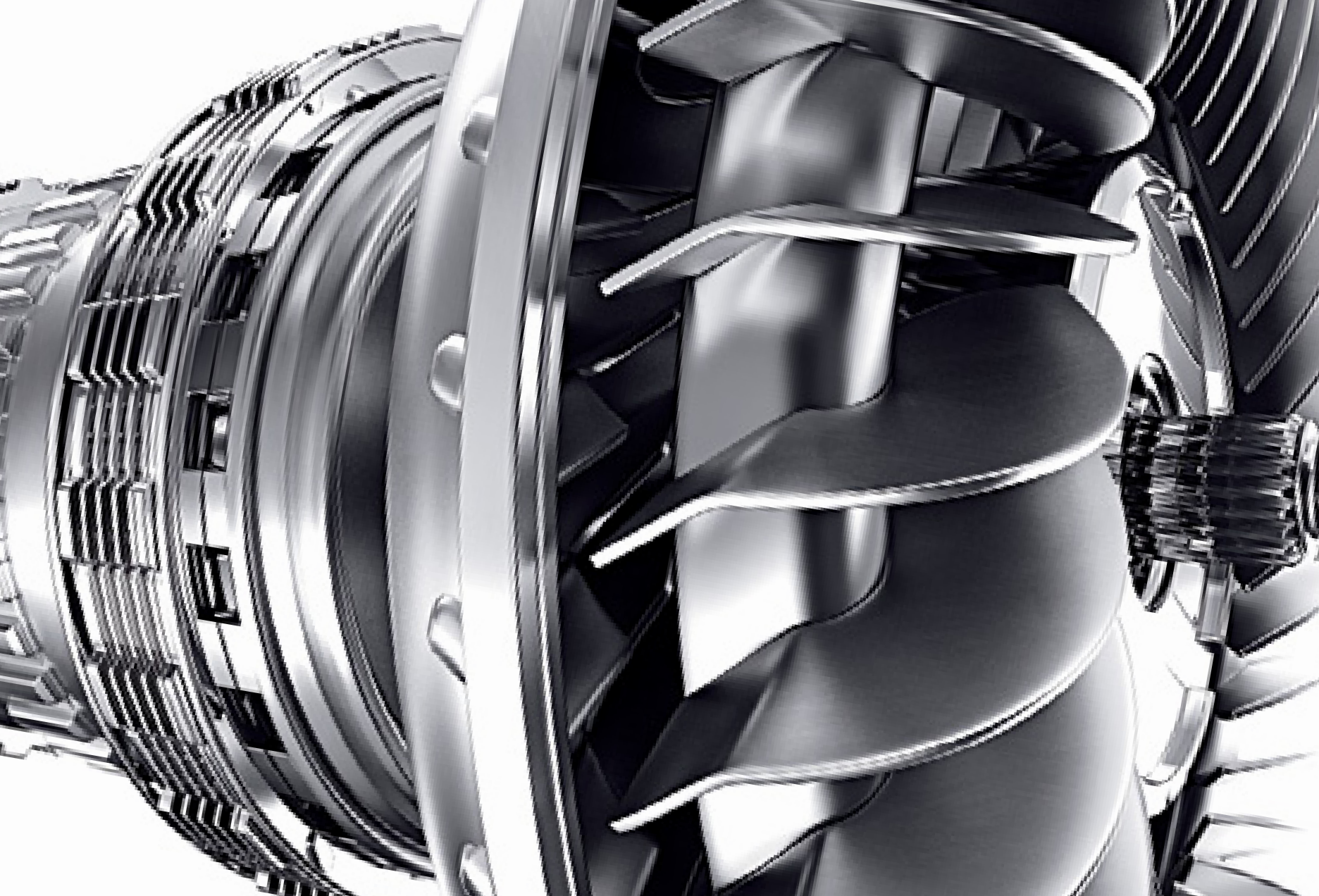
## Ahead of the game because we've stepped it up a gear.

The C230 and C300 sedans are fitted with a 6-speed manual transmission and the AGILITY CONTROL gearshift, which offers more responsive gear shifting thanks to direct transmission via shift rod.

Fitted standard on the C350, C63 AMG and 4MATIC™ models is 7G-TRONIC, the world's first 7-speed automatic transmission! This engineering masterpiece ensures barely perceptible shifts through the entire gear range. Along with intelligent transmission programming that learns and adapts itself to your personal driving style, 7G-TRONIC can skip several gears for responsive stopping power or when downshifting for quick bursts of speed. It also boasts a second reverse gear with a higher transmission ratio to make pulling away on ice and snow easier and safer.









## If the going gets rough you won't even notice.

The C-Class has always been known as an outstandingly comfortable ride. Still, we challenged our engineers to outdo themselves. And they pulled it off. The C-Class sets the standard for comfortable suspension and low interior noise levels.

The C-Class features a selective damping system. The standard-fit AGILITY CONTROL package automatically adjusts the dampers at each wheel to a harder or softer setting according to the given situation. It translates into a noticeably smoother ride than conventional dampers, particularly on poor road surfaces.

As a driver, staying relaxed at the wheel also means interior noise levels should be low. We kept this in mind when re-designing the C-Class. To eliminate wind noise more effectively, we have optimized the shape of countless bodywork details and improved the sound insulation.

For those in pursuit of an even more responsive feel on the road, the C63 AMG sports suspension offers exemplary handling dynamics. With enhanced performance, a newly developed wider track and lateral dynamics, thanks to stiffer springs at the front axle and a new spring rate at the front and rear axles, even a drive around the corner can be exhilarating.





The Dynamic Handling Package<sup>1</sup> gives the C-Class an even greater degree of agility and handling dynamics, enabling you to switch between Comfort and Sport drive modes at the mere touch of a button. This package also gives you a significant enhancement in ride comfort, thanks to continuously variable damping.







## Cool confidence regardless of the weather.

Sheets of rain, blankets of snow or heat waves rising from the asphalt: conquer it all by opting for the most advanced all-wheel drive system in the field. Proven in the flagship S-Class sedan, our 4th-generation 4MATIC™ permanent all-wheel drive system is a perfect fit for the C-Class.

This award-winning all-wheel drive technology incorporates our 4-wheel Electronic Traction System (4ETS) which monitors each wheel for the first sign of slippage! The system is always engaged and can individually brake slipping wheels to maintain the balance of power or reduce excess torque. 4MATIC™ splits the distribution of the engine power between the front wheels (45%) and the rear wheels (55%) in order to enhance both safety and performance.

Enviied among other all-wheel drive systems, 4MATIC™ has a more simple and lightweight design that lends itself to better mechanical performance and improved fuel efficiency. 4MATIC™ also works seamlessly with our Electronic Stability Program (ESP®) and acceleration skid control (ASR) system to enhance your all-wheel drive advantage and offer a greater level of proactive safety.



## A five star hotel you park in the garage.

Open the door to your new C-Class and the lush interior will pull you down into its ARTICO leather<sup>1</sup> upholstered seats. At the push of a button the power-adjustable heated front seats<sup>2</sup> remember your personal settings and that of two other drivers<sup>3</sup>, should you be sharing your motorized oasis.

Every detail of the interior has been painstakingly designed and your every need enthusiastically met. The ergonomic seats have been slightly raised, giving your shoulders and elbows more room. Any passengers along for the ride will appreciate the extra room to stretch their legs. Surround yourself with a choice of hand-finished wood or metal trim, in Calyptus<sup>4</sup>, high-gloss Burl Walnut<sup>5</sup>, sporty Aluminium<sup>6</sup> or elegant Black Bird's Eye Maple<sup>7</sup>.

The abundance of sensual luxuries continues as you wrap your hands around the leather-fitted multifunction steering wheel and command the MP3-compatible in-dash CD changer<sup>9</sup> and SIRIUS Satellite Radio<sup>8</sup>. The C-Class intuitively knows when to turn the music up as you accelerate or pause for an incoming call on your Bluetooth-enabled cell phone. Need to stay connected? Opt for the Media Interface<sup>10</sup> and you'll receive 3 different connection cables – one for your iPod<sup>®</sup>, a USB input for memory sticks and the auxiliary audio input.

Automatic and individual temperature control settings keep all travellers comfortable, even when sunshine is pouring through the sliding glass sunroof.<sup>11</sup>

Now even the longest trips will be over too quickly.

<sup>1</sup>Man-made leather. Not available on the C63 AMG. <sup>2</sup>Optional on the C230 models or available as part of the Premium Package. Standard on the C300, C350 and C63 AMG models. <sup>3</sup>Only available as part of the Premium Package on the C300 models. Standard on the C350 and C63 AMG models. Not available on the C230 models. <sup>4</sup>Standard on the C230 models. Not available on any other models. <sup>5</sup>Standard on the C300 and C350 models. Not available on any other models. <sup>6</sup>Available on the C230 in conjunction with the Sport Package. No-charge option on the C300 and C350 models. Not available on the C63 AMG. <sup>7</sup>Standard on the C63 AMG. No-charge option on the C300 and C350 models. Not available on the C230 models. <sup>8</sup>© 2008 SIRIUS Satellite Radio Inc. "SIRIUS", the SIRIUS dog logo and related marks are trademarks of SIRIUS Satellite Radio Inc. Complimentary 6 months of service included. Monthly subscription required for service thereafter. Standard on the C350 models and C63 AMG. Optional on the C230 and C300 models. <sup>9</sup>Available on the C230 models as part of the harman/kardon Sound System Package. Standard on the C300, C350 and C63 AMG models. <sup>10</sup>Delayed availability. Available as part of an option package on the C63 AMG. Available as a stand-alone option on the C300 and C350 models. Not available on the C230 models. <sup>11</sup>Optional on the C230 models or available as part of the Premium Package. Standard on the C300, C350 and C63 AMG models.







## You work hard enough. Let us take it from here.

A driving environment that allows you to concentrate on the task at hand is not just a luxury; it's a major safety feature. It all starts with a well-designed driver's area. The dashboard is horizontally structured and positioned higher than the previous design. The three-dial instrument cluster is in your immediate field of vision to provide information about key operating functions. Between the dials, the LCD screen lets you know what radio station or CD track is playing and audio controls lie conveniently under your fingertips on the leather-wrapped multifunction steering wheel.

The internal atmosphere is just as easily adjusted. At the touch of a button, the dual-zone THERMATIC automatic climate control<sup>1</sup> adjusts and maintains two separate temperature zones keeping both you and your front passenger both in perfect comfort.

Standard on the C350 models is the advanced three-zone THERMOTRONIC automatic climate control system<sup>2</sup>. Using advanced solar, air quality and dew point sensors it maintains ideal comfort levels and allows the temperature of the rear passenger area to be set independently.

The Sport Package<sup>4</sup> gives the C-Class an even more contemporary look, with a distinctive 3-spoke sport steering wheel, upgraded brake calipers and aluminium studded pedals.

<sup>1</sup>Standard on the C230, C300 and C63 AMG models. Not available on the C350 models. <sup>2</sup>Standard on the C350 models. Optional on the C63 AMG. Not available on the C230 and C300 models. <sup>3</sup>Only available as an option on the C300, in conjunction with 7G-TRONIC Automatic Transmission, and the C300 4MATIC™. Available on C350 and C63 AMG models as part of the Premium Package or as a stand alone option. Not available on the C230 models. Not available in conjunction with 6-speed manual transmission. <sup>4</sup>Standard on the C300 and C350 models. Available as part of an option package on the C230 models. Not available on the C63 AMG.

With the KEYLESS-GO<sup>3</sup> feature, open the door and start the engine without the key ever leaving your pocket.



## Standing is vastly overrated.

When developing front seats for the C-Class we had fastidious tastes in mind. Whether draped in ARTICO<sup>1</sup> or the hand-fitted full leather upgrade<sup>2</sup> (AMG Nappa leather is standard on the C63 AMG), the 8-way power-adjustable front seats conform to your every curve. Your personalized comfort levels can also be remembered by means of the Memory Package<sup>3</sup>. Exact seat configuration, head restraint height, steering wheel and mirror positions are all recalled at the touch of a button. And when you can see your breath outside, the heated front seats<sup>4</sup> will keep you toasty inside.

Rear passengers are also catered to, with more leg and headroom than before. Opting for the rear window sunshade<sup>5</sup> or the rear temperature controls as part of the THERMOTRONIC 3-zone automatic climate system<sup>6</sup> will only increase the carpooling requests.

Hitting the slopes or the back 9? If you need more than the 475 litres of existing cargo space in the trunk, the split-folding rear seats<sup>7</sup> offer added versatility for longer items such as skis and golf clubs.

<sup>1</sup>Man-made leather. <sup>2</sup>Not available on the C230 and C63 AMG models. <sup>3</sup>Available as part of the Premium Package on the C300 models. Standard on the C350 and C63 AMG models. Not available on the C230 models. <sup>4</sup>Standard on the C300, C350 and C63 AMG models. Optional on the C230 models and available as part of the Premium Package. <sup>5</sup>Available as part of the Premium Package on the C300, C350 and C63 AMG models. Not available on the C230 models. <sup>6</sup>Standard on the C350 models. Available as part of the Premium Package on the C63 AMG. Not available on the C230 and C300 models. <sup>7</sup>Standard on the C300, C350 and C63 AMG models. Not available on the C230 models.











## From silence to symphonic in mere seconds.

A virtually silent interior is the first step in creating the perfect sound system. Positioned for optimal acoustics within the C-Class, the speed-responsive loudspeakers will automatically match the enthusiasm of the engine, turning the music up as the pedal goes down. When you really want to push the decibel level on the standard MP3-compatible CD player and AM/FM weather-band radio, do so safely and conveniently with intuitive steering wheel controls.

Those who appreciate truly exquisite sound will savour the harman/kardon® LOGIC7® surround sound system<sup>1</sup>, allowing you to recreate a premium concert-hall experience at the touch of a button. An in-dash CD changer and 9-channel DSP (digital sound processing) amplifier maximize 12 loudspeakers and 450 watts of audio fidelity in true 5.1 channel sound.

The 4.5" colour display lets you know exactly what's on 110 channels of SIRIUS Satellite Radio<sup>2</sup> or what play list is spinning on your MP3 player, connected via auxiliary input in the glove box.

Expecting an important call? Standard Bluetooth integration lets you keep both hands on the wheel and won't let you miss a word of the conversation.

<sup>1</sup>Available as part of an option package on the C230 models. Optional on the C300 and C63 AMG models or available as part of the Premium Package. Standard on the C350 models. <sup>2</sup>© 2008 SIRIUS Satellite Radio Inc. "SIRIUS", the SIRIUS dog logo and related marks are trademarks of SIRIUS Satellite Radio Inc. Complimentary 6 months of service included. Monthly subscription required for service thereafter. Optional on the C230 models. Optional on the C300 models and available as part of the Premium Package. Standard on the C350 and C63 AMG models.



## Complete control in the palm of your hand.

Control over such a technologically advanced piece of machinery has never been made simpler. The COMAND APS control and display system<sup>1</sup> combines navigation, audio and telephone into one intuitive design. Its interface has extended functionality and is more intelligent and user-friendly than ever before, with no need to change navigation DVDs thanks to an internal hard-drive storage system.

Following driving directions on the unique pivoting 7" display screen has been made safer and easier with ideal positioning in your field of vision. With high-resolution graphic elements and colours, the course is laid out with added precision and clarity so you always arrive composed and on time.

COMAND APS is controlled by input buttons in the centre console or with the S-Class-inspired circular control button that falls conveniently to hand in the armrest. Easier still, all key functions can now be called up by means of the LINGUATRONIC voice recognition function! The destination input section of the navigation system has whole-word recognition capability for points of interest and road names. You can dial up a phone number simply by saying the person's name. As an added audio function, you can store hundreds of MP3's on the COMAND APS hard drive.

The armrest is designed in such a way that the controller automatically falls to hand. It offers a particularly fast, easy and intuitive way of adjusting the full range of COMAND APS settings.



<sup>1</sup>Available on the C300, C350 and C63 AMG models as part of an option package. Not available on the C230 models.







## Keeping you safe by keeping you focused.

While we are proud of our 120 year heritage, Mercedes-Benz has always focused on the future. Our vision of accident-free driving is being realized through a series of linked technologies that come into play in the critical moments before, during and after an accident.

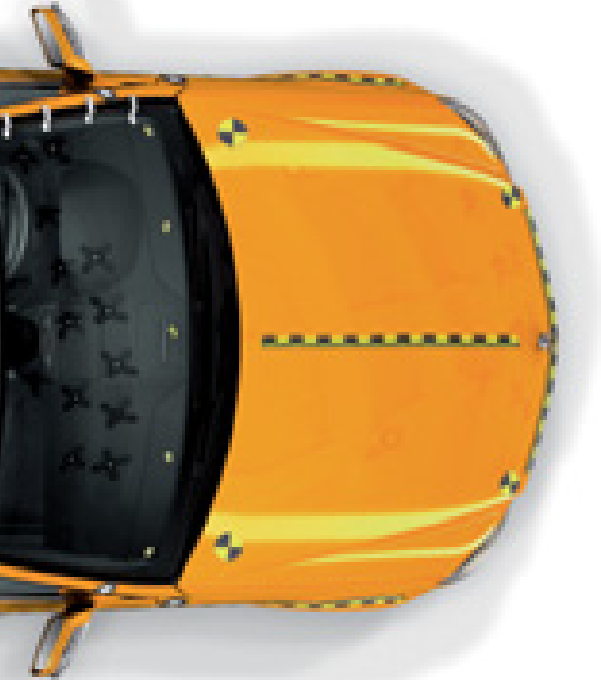
This integral safety concept from Mercedes-Benz begins by recognizing that the majority of accidents start long before the actual collision, from lapses in concentration, poor visibility or an unexpected hazard.

The C-Class is fitted with safety systems that promote relaxed driving to help you bring critical situations under control. The ergonomic seat design keeps you superbly comfortable while the multifunction steering wheel with audio control buttons allows you to keep both hands on the wheel at all times. With Bi-Xenon headlamps<sup>1</sup> you'll get an even clearer view of what's ahead with cornering lights to illuminate potential obstacles while turning.

When driving, you can also count on over 60 electronic support systems. Some are designed to alert you in the event of a problem – such as the Brake Pad Wear Indicator – while others are there to provide active assistance, such as the Electronic Stability Program (ESP<sup>®</sup>) and Brake Assist (BAS). The ESP<sup>®</sup> sensors can detect hazardous driving situations, such as pronounced oversteer or understeer, dramatic steering movements, emergency and panic braking and can assist the driver accordingly.<sup>2</sup> Complementing the ESP<sup>®</sup> and anti-lock brakes, Brake Assist recognizes emergency braking by the speed at which you apply the brake pedal. When emergency braking is detected, BAS instantly applies full brake pressure. This compensates for a driver's tendency to apply less brake pressure than necessary in panic situations.

<sup>1</sup>Standard on the C300, C350 and C63 AMG models. Not available on the C230 models. <sup>2</sup>No system, regardless of how advanced, can overcome the laws of physics or correct careless driving. Please always wear your seat belt. Best performance in snow is obtained with winter tires.





## We've thought of everything so you don't have to.

Numerous occupant protection systems can significantly reduce the risk of injury in the event of an accident. In case of a rear-end collision, sensors cause the standard-fit NECK-PRO head restraints in the front seats to deploy in a matter of milliseconds to reduce the distance between the seat occupant's head and the head restraint to reduce the risk of whiplash.

The C-Class is further equipped with belt tensioners on the front and outer rear seats and numerous airbags. These include two-stage driver and front passenger airbags<sup>1</sup>, side air bags, and window curtain air bags whose protection zone covers virtually the entire area of the side windows. The side air bags and window curtain air bags are also triggered by pressure sensors: if the door deforms in a side-on collision, the increase in air pressure between the outer door panels and the interior of the door is registered by the pressure sensors, notifying the control unit to deploy the airbags.

We've packed as many safety features as we could into the C-Class in hopes that they'll never be needed.

<sup>1</sup>WARNING: The forces of a deploying air bag can cause serious or fatal injuries to a child under age 13. Children under 13 should be seated in the back seat if possible. See Operator's Manual for additional warnings and information on air bags, seat belts and child seats.



## Even when it's down it's not out.

To prevent further damage following an accident and to assist with rescuing the occupants, the C-Class takes various measures depending on the type and severity of the accident. The engine turns off automatically and the fuel supply is cut. Hazard lights warn other drivers and emergency interior lights are automatically activated. Side windows are partially lowered and if necessary, doors are automatically unlocked. Cutting points on the windshield and rear window help emergency responders identify the sections of the A and C pillars that can be cut if it is necessary to tear off the roof.

Should an air bag or Emergency Tensioning Device be activated, the vehicle can engage the optional TeleAid System<sup>1</sup>, putting your vehicle in touch with the TeleAid Emergency Response Center, where trained specialists can assess the situation and alert emergency services quickly and efficiently.

Mercedes-Benz understands that when it comes to safety, time is of the essence.

<sup>1</sup>Subscription is required for service to be active. TeleAid operates only where cellular and Global Positioning System coverage is available. Optional on all models.



## An outstanding gene pool delivers the sportiest C-Class ever.

What do you get when you marry a 40-year auto racing heritage to a V-8 engine designed with thoroughbred motor sports technology? Consummate performance, as evidenced by the C63 AMG. A vehicle that moves to the pole position in its segment in terms of both sheer driving enjoyment and expressive design.

With its wide, road hugging stance and ultra-dynamic exterior featuring a distinctive front end with powerfully contoured flared apron and wings, the C63 will be impressive at first glance. A closer look reveals even more dramatic design flourishes, including bonnet with striking powerdomes, rear apron with black diffuser insert and high-gloss chrome-plated twin tailpipes.

But its real beauty lies within. The prominent powerdomes conceal a powerful AMG 6.2-litre V-8 engine that has 451 hp and maximum torque of 443 lb-ft, allowing you to accelerate from 0 to 100 km/h in just 4.5 seconds.

More practical in everyday use than any of its rivals, the C63 AMG adds up to a unique proposition. A dynamic interior with sports seats and a performance steering wheel, complemented by an engine and exterior details, are a compelling testament to power, performance and an uncompromising will to win.

Whatever the C63 AMG promises at first glance, it more than lives up to expectations once on the road.







Style points will be awarded.



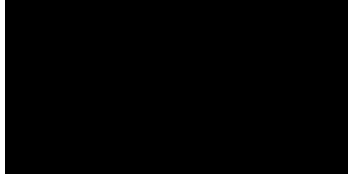
Colour is the most personal choice of all. So which one expresses you best? And which interior do you choose to live in? After all, the perfect finishing details are what make an automotive masterpiece. And here's a reassuring thought: both solid and metallic paint finishes benefit from an extra scratch-resistant clear coat. This makes your colour less susceptible not only to scratches, but also to sunlight, temperature variations, dust and soot.

	ARTICO LEATHER			LEATHER			AMG NAPPA LEATHER		
	Black	Almond Beige/Cashmere Beige <sup>1</sup>	Alpaca Grey	Black	Alpaca Grey	Black	Black/Sahara Beige <sup>1</sup>	Alpaca Grey	
<b>SOLID PAINT</b>									
Black	●	●	●	●	●	●	●	●	
Fire Opal	●	○	○	●	○	●	○	○	
Calcite White	●	○	●	●	●	●	○	●	
<b>METALLIC PAINT</b>									
Obsidian Black	●	●	●	●	●	●	●	●	
Tanzanite Blue	●	○	●	●	●	●	○	●	
Carneol Red	●	●	●	●	●	●	●	●	
Cubanite Silver	●	○	○	●	○	●	○	○	
Tenorite Grey	●	○	●	●	●	●	○	●	
Iridium Silver	●	○	●	●	●	●	○	●	
Palladium Silver	●	○	●	●	●	●	○	●	
Sanidine Beige	●	○	○	●	○	●	○	○	

● Recommended combination    ○ Possible combination

<sup>1</sup>Delayed availability on the C300 models

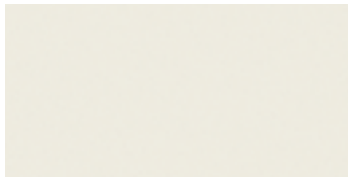
**SOLID PAINT**



040 Black



590 Fire Opal



650 Calcite White

**METALLIC PAINT (OPTIONAL)**



197 Obsidian Black



359 Tanzanite Blue



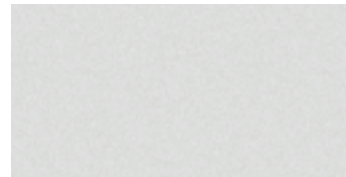
544 Carneol Red



723 Cubanite Silver



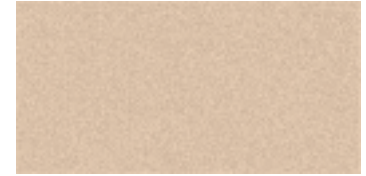
755 Tenorite Grey



775 Iridium Silver



792 Palladium Silver



798 Sanidine Beige





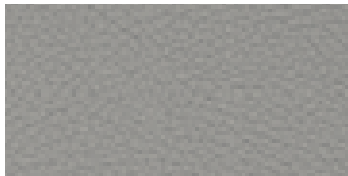
**ARTICO LEATHER**



101 Black



115 Almond Beige/Cashmere Beige

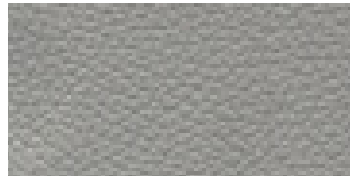


118 Alpaca Grey

**LEATHER**



201 Black



218 Alpaca Grey

**AMG NAPPA LEATHER**



201 Black



205 Black/Sahara Beige



218 Alpaca Grey

**TRIM**



731 Burl Walnut (high-gloss)



732 Black Bird's Eye Maple



734 Calyptus



739 Aluminium

INDIVIDUAL EQUIPMENT (SELECTION)	C230	C230 4MATIC™	C300	C300 4MATIC™	C350	C350 4MATIC™	C63 AMG
<b>TRANSMISSION</b>							
6-speed manual transmission with AGILITY CONTROL gearshift	●	-	●	-	-	-	-
7G-TRONIC 7-speed automatic transmission	○	●	○	●	●	●	-
7G-TRONIC 7-speed automatic transmission with AMG SPEEDSHIFT enhancements	-	-	-	-	-	-	●
<b>TRACTION/STABILITY</b>							
4MATIC™ permanent all-wheel drive with 4ETS	-	●	-	●	-	●	-
Electronic Stability Program (ESP®) including ABS and acceleration skid control (ASR)	●	●	●	●	●	●	●
ADAPTIVE BRAKE with hill start assist	●	●	●	●	●	●	●
AGILITY CONTROL steering, suspension and selective damping	●	●	●	●	●	●	●
Dynamic Handling Package	-	-	○¹	-	●	-	-
Sport suspension	○¹	○¹	●	●	●	●	-
AMG sport suspension	-	-	-	-	-	-	●
AMG-tuned performance suspension	-	-	-	-	-	-	○¹
<b>AUDIO/VISUAL/COMMUNICATION</b>							
MP3-compatible single-disc CD player with AM/FM/weather-band radio	●	●	-	-	-	-	-
MP3-compatible in-dash CD changer with AM/FM/weather-band radio	○¹	○¹	●	●	●	●	●
Bluetooth integration	●	●	●	●	●	●	●
Electronic Compass	-	-	○¹	○¹	●	●	●
Auxiliary input in glove box	●	●	●	●	●	●	●
SIRIUS Satellite Radio²	○	○	○³	○³	●	●	●
harman/kardon® LOGIC7® surround sound system	○³	○³	○³	○³	●	●	○³

INDIVIDUAL EQUIPMENT (SELECTION)	C230	C230 4MATIC™	C300	C300 4MATIC™	C350	C350 4MATIC™	C63 AMG
COMAND APS with navigation and PCMCIA interface for MP3 playback from memory cards	-	-	○¹	○¹	○¹	○¹	○¹
LINGUATRONIC voice control	-	-	○¹	○¹	○¹	○¹	○¹
Media Interface	-	-	○	○	○	○	○
<b>EXTERIOR</b>							
16" 7-spoke alloy wheels with all-season tires	●	●	-	-	-	-	-
17" multi-spoke alloy wheels with all-season performance tires	○¹	○¹	-	-	-	-	-
17" 5-spoke alloy wheels with all-season performance tires	-	-	●	●	-	-	-
AMG 17" 6-twin spoke alloy wheels with all-season performance tires	-	-	○	○³	○	○	-
AMG 18" 5-twin spoke alloy wheels with all-season tires	-	-	-	-	●	●	-
AMG 18" 5-spoke alloy wheels with all-season tires⁴	-	-	-	-	-	-	●
AMG Styling Package (front apron, side skirts, and rear apron, including Mercedes-Benz Star in grille)	○¹	○¹	●	●	●	●	●
Upgraded brake calipers with vented front rotors	○¹	○¹	●	●	●	●	-
Bi-Xenon headlamps with washers and cornering lights	-	-	●	●	●	●	●
Heated windshield washer system with two-stage rain-sensing windshield wipers	●	●	●	●	●	●	●
Power-folding exterior mirrors	○¹	○¹	●	●	●	●	●
Tinted glass	●	●	●	●	●	●	●
Remote trunk release	●	●	●	●	●	●	●

INDIVIDUAL EQUIPMENT (SELECTION)	C230	C230 4MATIC™	C300	C300 4MATIC™	C350	C350 4MATIC™	C63 AMG
<b>INTERIOR</b>							
8-way power-adjustable front seats	●	●	●	●	-	-	-
10-way power-adjustable front seats with 3-position memory	-	-	○ <sup>1</sup>	○ <sup>1</sup>	●	●	●
Heated front seats	○ <sup>3</sup>	○ <sup>3</sup>	●	●	●	●	●
Split-folding rear seats	-	-	●	●	●	●	●
ARTICO leather upholstery <sup>5</sup>	●	●	●	●	●	●	-
Leather upholstery	-	-	○	○	○	○	-
AMG Nappa Leather upholstery	-	-	-	-	-	-	●
Calyptus wood trim	●	●	-	-	-	-	-
Burl Walnut wood trim (high-gloss)	-	-	●	●	●	●	-
Aluminium trim	○ <sup>1</sup>	○ <sup>1</sup>	NC	NC	NC	NC	-
Black Bird's Eye Maple wood trim	-	-	NC	NC	NC	NC	●
Steering Wheel Shift Paddles	-	-	○ <sup>6</sup>	○ <sup>1</sup>	●	-	-
Leather-wrapped multifunction steering wheel and shift knob	●	●	●	●	●	●	●
3-spoke sport steering wheel	○ <sup>1</sup>	○ <sup>1</sup>	●	●	●	●	●
Aluminium studded pedals	○ <sup>1</sup>	○ <sup>1</sup>	●	●	●	●	●
Power-tilt/sliding glass sunroof	○ <sup>3</sup>	○ <sup>3</sup>	●	●	●	●	●
Panoramic sunroof	-	-	-	-	○ <sup>3</sup>	○ <sup>3</sup>	-
Rear window sunshade	-	-	○ <sup>1</sup>	○ <sup>1</sup>	○ <sup>1</sup>	○ <sup>1</sup>	○ <sup>1</sup>
THERMATIC dual-zone automatic climate control	●	●	●	●	-	-	●
THERMOTRONIC 3-zone automatic climate control	-	-	-	-	●	●	○ <sup>1</sup>
Steering column with tilt/telescoping adjustment	●	●	●	●	-	-	-
Power-tilt/telescoping steering column with 3-position memory	-	-	○ <sup>1</sup>	○ <sup>1</sup>	●	●	●

INDIVIDUAL EQUIPMENT (SELECTION)	C230	C230 4MATIC™	C300	C300 4MATIC™	C350	C350 4MATIC™	C63 AMG
Velour floor mats	●	●	●	●	●	●	-
AMG Velour floor mats	-	-	-	-	-	-	●
Auto-dimming mirrors (rearview and driver's side)	○ <sup>1</sup>	○ <sup>1</sup>	●	●	●	●	●
<b>CONVENIENCE</b>							
Automatic headlamp activation	●	●	●	●	●	●	●
Valet trunk locking	●	●	●	●	●	●	●
Integrated garage door opener	-	-	○ <sup>1</sup>	○ <sup>1</sup>	●	●	●
SmartKey with panic button	●	●	●	○ <sup>1</sup>	●	●	●
KEYLESS-GO	-	-	○ <sup>7</sup>	○	○ <sup>3</sup>	○ <sup>3</sup>	○ <sup>3</sup>
<b>SAFETY</b>							
Dual-front, side and window curtain air bags	●	●	●	●	●	●	●
Crash-responsive NECK-PRO front head restraints	●	●	●	●	●	●	●
Belt tensioners with belt-force limiters	●	●	●	●	●	●	●
Anti-theft alarm system	●	●	●	●	●	●	●
First aid kit	●	●	●	●	●	●	●
Brake Pad Wear Indicator	●	●	●	●	●	●	●
TeleAid Emergency Calling System <sup>8</sup>	○	○	○	○	○	○	○

● Standard ○ Optional - Not Available NC No-charge option

<sup>1</sup>Only available as part of an option package. <sup>2</sup>© 2008 SIRIUS Satellite Radio Inc. "SIRIUS", the SIRIUS dog logo and related marks are trademarks of SIRIUS Satellite Radio Inc. Complimentary 6 months of service included. Monthly subscription required for service thereafter. <sup>3</sup>Available as part of an option package or as a stand-alone option. <sup>4</sup>Delayed availability. <sup>5</sup>Man-made leather. <sup>6</sup>Available as part of an option package. Must be ordered in conjunction with the 7G-TRONIC automatic transmission. <sup>7</sup>Only available in conjunction with 7G-TRONIC automatic transmission <sup>8</sup>Subscription is required for service to be active. TeleAid operates only where cellular and Global Positioning System coverage is available.

EQUIPMENT PACKAGES	C230	C230 4MATIC™	C300	C300 4MATIC™	C350	C350 4MATIC™	C63 AMG
<b>C230 AND C230 4MATIC™ PREMIUM PACKAGE:</b> Heated front seats. Power-tilt/sliding glass sunroof. Exterior power folding mirrors. Auto-dimming mirrors (rearview and driver's side).	○	○	-	-	-	-	-
<b>C300 AND C300 4MATIC™ PREMIUM PACKAGE:</b> harman/kardon® LOGIC7® surround sound system. SIRIUS Satellite Radio! Electronic compass 10-way power adjustable front seats with 3-position memory. Power steering column with 3-position memory. Rear window sunshade. Integrated garage door opener.	-	-	○	○	-	-	-
<b>C350 AND C350 4MATIC™ PREMIUM PACKAGE:</b> COMAND APS with hard disc-drive navigation. DVD changer. PCMCIA interface for MP3 playback from memory cards. 4GB MP3 storage. Panoramic sunroof. KEYLESS-GO. LINGUATRONIC voice control. Rear window sunshade.	-	-	-	-	○	○	-
<b>C63 AMG PREMIUM PACKAGE:</b> COMAND APS w/hard disc-drive Navigation & DVD Changer. KEYLESS-GO. harman/kardon® LOGIC7® Surround Sound System. THERMOTRONIC Automatic Climate Control. LINGUATRONIC Voice Control. Rear window sunshade.	-	-	-	-	-	-	○
<b>C230 AND C230 4MATIC™ SPORT PACKAGE:</b> 17" multi-spoke alloy wheels. All-season performance tires. Sport suspension. AMG front and rear aprons. AMG side skirts. Mercedes-Benz Star in grille. Upgraded brake calipers. 3-spoke sport steering wheel. Aluminium trim. Aluminium studded pedals.	○	○	-	-	-	-	-

	C230	C230 4MATIC™	C300	C300 4MATIC™	C350	C350 4MATIC™	C63 AMG
<b>C300 SPORT PACKAGE:</b> AMG 17" 6-Twin-Spoke Wheels. All-season performance tires. Direct Steering. Steering Wheel Shift Paddles. Dynamic Handling Package.	-	-	○	-	-	-	-
<b>COMAND NAVIGATION PACKAGE:</b> COMAND APS with hard-drive based navigation. DVD changer. PCMCIA interface for MP3 playback from memory cards. 4GB MP3 storage. LINGUATRONIC voice control.	-	-	○	○	-	-	-
<b>AMG PERFORMANCE PACKAGE:</b> Electronic Speed Limiter Deletion. Limited-Slip Rear Differential. AMG Carbon Fibre Trim. Performance Package.	-	-	-	-	-	-	○
<b>HARMAN/KARDON® SOUND SYSTEM PACKAGE:</b> harman/kardon® LOGIC7® surround sound system. In-dash MP3-compatible CD changer.	○	○	-	-	-	-	-

● Standard ○ Optional - Not Available NC No-charge option



## Luxury indulged.

Each C-Class model has a unique Premium Package to take it to its ultimate expression.

### **C230 AND C230 4MATIC™**

Heated front seats will warm you quickly when winter's blowing hard outside. And when summer finally comes around the power-tilt/sliding glass sunroof welcomes the sunshine. Auto-dimming mirrors cut glare when the sun beats down or you're catching headlights in the rear-view mirror at night. Exterior power folding mirrors round out the C230 Premium Package and let you slide into a tight spot.

### **C300 AND C300 4MATIC™**

Your auditory senses will be indulged if you opt for the impressive C300 Premium Package including the harman/kardon® LOGIC7® surround sound system with an in-dash MP3-compatible CD changer. Over 100 channels of SIRIUS Satellite Radio<sup>1</sup> will ensure even the most discerning tastes are fulfilled. The upgrade to 10-way power adjustable front seats with 3-position memory will satisfy you and the most particular guest and for anyone in the backseat, a rear window sunshade will keep them cool. The electronic compass will help you ensure you never lose your bearings along the way. And after a long commute, the integrated garage door opener makes life even more convenient.

### **C350 AND C350 4MATIC™**

Pulling out all the stops for the C350 Premium Package, the COMAND APS control and display system with hard-drive based navigation keeps you in total control. Your audio capabilities are heightened with a DVD changer and PCMCIA interface for reading and transferring up to 4GB of MP3's from memory cards. Enjoy your own private observatory any evening with an expansive panoramic sunroof, with a rear window sunshade to keep your passengers cool in the summer. The ultra-convenient KEYLESS-GO feature and LINGUATRONIC voice control function top off the most luxurious C-Class ever.

### **C63 AMG**

The inclusion of a harman/kardon® LOGIC7® surround sound system will certainly be music to even the most discerning of ears. Your audio capabilities are further enhanced with a DVD changer and PCMCIA interface for reading and transferring up to 4GB of MP3's from memory cards. THERMOTRONIC Automatic Climate Control will heighten your enjoyment and comfort throughout the seasons, while a rear window sunshade will keep both your automobile and back seat passengers cooler throughout the hotter months. KEYLESS-GO feature and LINGUATRONIC voice control function add that extra measure of convenience and security. COMAND APS control and display system with hard-drive based navigation keep you in command of the road.

<sup>1</sup>© 2008 SIRIUS Satellite Radio Inc. "SIRIUS", the SIRIUS dog logo and related marks are trademarks of SIRIUS Satellite Radio Inc. Complimentary 6 months of service included. Monthly subscription required for service thereafter.

The final touch for a great first impression.



From practical to just plain stylish, there's a wide selection of genuine Mercedes-Benz accessories to choose from. We've got plenty of storage systems for all your extra gear or further refine your new C-Class with incenio designer wheels or a powerful looking roof spoiler. For details on our full range of accessories ask your local Mercedes-Benz dealer.

**"Puhala" 18" 5-twin spoke incenio alloy wheels**

It's hard to go unnoticed in your new C-Class. Make it even harder. Finished in sterling silver, "Puhala" incenio wheels were designed exclusively for the C-Class.



**Multifunction Roof Rack**

Have gear stored safely with the "Easy-Fix" attachment system. Secure your skis and snowboards into the double level rack or attach the roof box onto the multifunction base and store the extras inside.



**QUICKPARK**

We've even made parking easier with the QUICKPARK system. It uses ultrasonic sensors and acoustic warning signals to keep you from bumps when trying to fit into a tight spot.



**iPod® Integration Kit**

Choose your favourite playlists from the multifunction steering wheel with the iPod® Integration Kit. It seamlessly integrates into your car's audio system; choose the artist, album or track right from the dashboard display.





C 300

	<b>C230</b>	<b>C230 4MATIC™</b>	<b>C300</b>	<b>C300 4MATIC™</b>	<b>C350</b>	<b>C350 4MATIC™</b>	<b>C63 AMG</b>
Engine type	DOHC 24-valve V-6	DOHC 24-valve V-6	DOHC 24-valve V-6	DOHC 24-valve V-6	DOHC 24-valve V-6	DOHC 24-valve V-6	DOHC 32-valve V-8
Total displacement	2,496-cc	2,496-cc	2,996-cc	2,996-cc	3,498-cc	3,498-cc	6,208-cc
Net power	201 hp @ 6,200 rpm	201 hp @ 6,200 rpm	228 hp @ 6,000 rpm	228 hp @ 6,000 rpm	268 hp @ 6,000 rpm	268 hp @ 6,000 rpm	451 hp @ 6,800 rpm
Net torque	181 lb-ft @ 2,900–5,000 rpm	181 lb-ft @ 2,900–5,000 rpm	221 lb-ft @ 2,500–5,000 rpm	221 lb-ft @ 2,500–5,000 rpm	258 lb-ft @ 2,400–5,000 rpm	258 lb-ft @ 2,400–5,000 rpm	443 lb-ft @ 5,000 rpm
Acceleration <sup>1</sup> ; 0-100 km/h, manual/automatic transmission	8.4/8.4 seconds	N/A/8.6 seconds	7.3/7.3 seconds	N/A/7.3 seconds	N/A/6.4 seconds	N/A/6.3 seconds	N/A/4.5 seconds
Approximate top speed <sup>2</sup>	210 km/h	210 km/h	210 km/h	210 km/h	210 km/h	210 km/h	250 km/h
Tires, front rear	205/55 R 16 205/55 R 16	205/55 R 16 205/55 R 16	225/45 R 17 225/40 R 17	225/45 R 17 225/40 R 17	225/40 R 18 255/35 R 18	225/40 R 18 255/35 R 18	235/40 R 18 255/35 R 18
Fuel economy <sup>3</sup> , city/highway estimate	11.8–7.4 L/100 km	11.9–7.9 L/100 km	11.7–7.7 L/100 km	12.0–8.0 L/100 km	12.2–7.9 L/100 km	12.5–8.2 L/100 km	18.0–10.6 L/100 km
Fuel tank capacity	66.0 litres (with 8.0-litre reserve)	66.0 litres (with 8.0-litre reserve)	66.0 litres (with 8.0-litre reserve)	66.0 litres (with 8.0-litre reserve)	66.0 litres (with 8.0-litre reserve)	66.0 litres (with 8.0-litre reserve)	66.0 litres (with 8.0-litre reserve)
Fuel requirement	Premium unleaded gasoline	Premium unleaded gasoline	Premium unleaded gasoline	Premium unleaded gasoline	Premium unleaded gasoline	Premium unleaded gasoline	Premium unleaded gasoline
Dimensions <sup>4</sup>							
Wheelbase	108.7 in/2,760 mm	108.7 in/2,760 mm	108.7 in/2,760 mm	108.7 in/2,760 mm	108.7 in/2,760 mm	108.7 in/2,760 mm	108.7 in/2,760 mm
Overall length	180.4 in/4,581 mm	180.4 in/4,581 mm	180.4 in/4,581 mm	180.4 in/4,581 mm	180.4 in/4,581 mm	180.4 in/4,581 mm	180.4 in/4,581 mm
Overall height	56.9 in/1,444 mm	56.9 in/1,444 mm	56.9 in/1,444 mm	56.9 in/1,444 mm	57.0 in/1,448 mm	57.0 in/1,448 mm	56.6 in/1,438 mm
Overall width incl. mirrors	79.5 in/2,020 mm	79.5 in/2,020 mm	79.5 in/2,020 mm	79.5 in/2,020 mm	79.5 in/2,020 mm	79.5 in/2,020 mm	79.5 in/2,020 mm
Curb weight	3,505 lb/1,590 kg	3,725 lb/1,690 kg	3,527 lb/1,600 kg	3,736 lb/1,695 kg	3,615 lb/1,640 kg	3,792 lb/1,720 kg	3,916 lb/1,780 kg
Trunk capacity	16.8 cu ft/475 litres	16.8 cu ft/475 litres	16.8 cu ft/475 litres	16.8 cu ft/475 litres	16.8 cu ft/475 litres	16.8 cu ft/475 litres	16.8 cu ft/475 litres

<sup>1</sup>Stated rates of acceleration are based on the manufacturer's track results and may vary depending upon model, environmental and road surface conditions, driving style, elevation and vehicle load. <sup>2</sup>Electronically limited. <sup>3</sup>These estimates are based on Transport Canada testing methods. The actual fuel consumption of this vehicle may vary. Refer to the *Fuel Consumption Guide*. <sup>4</sup>Dimensions shown are for models with standard equipment.



## A passion for things done right.

It's what you expect from Mercedes-Benz. A passion for craftsmanship and attention to detail is what sets Mercedes-Benz apart from all other manufacturers. This passion drives us to set new standards in design, performance, comfort and safety. To continually build on the legendary traditions of Mercedes-Benz. And to provide you with an ownership experience unlike any other, including the valuable benefits described below.

### 24-hour Roadside Assistance

During the basic warranty coverage of 48 months and the time duration of the optional Extended Limited Warranty, Mercedes-Benz Roadside Assistance will be at your service. We'll bring you some gas, replace a flat tire with your spare, or jumpstart your car. In the event of a mechanical breakdown, if attempts by our Roadside Assistance technician have not made your vehicle safely operable, towing service will be provided to the nearest Mercedes-Benz dealership. Assistance is available 24 hours a day, every day, to anyone driving a Mercedes-Benz anywhere in Canada or the continental U.S.<sup>1</sup>

### Wear and tear coverage

For 24 months or 40,000 km (whichever comes first) many items normally considered "wear and tear", such as light bulbs, brake pads and discs, are covered. If necessary, an authorized Mercedes-Benz dealer will replace these parts at no charge to you.

### Mercedes-Benz warranties

The Mercedes-Benz New Vehicle Limited Warranty covers defects in materials or workmanship for 48 months or 80,000 km, whichever occurs first. To widen your window of confidence, you can opt for a Mercedes-Benz Extended Limited Warranty as well.<sup>2</sup>

### Customer service

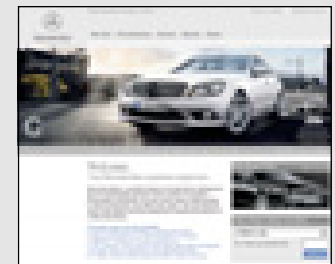
Owning a Mercedes-Benz means that when you have a question, we're here to help. Customer Service is open from 9 a.m. to 5 p.m. EST, Monday through Friday, and is staffed with knowledgeable Mercedes-Benz people who can talk you through the finer points of working your car's audio system — or even assist you in locating the nearest Mercedes-Benz dealership. Just call 1-800-387-0100. It's that simple.

### Trip interruption reimbursement

If a breakdown covered by your New Vehicle Limited Warranty occurs more than 80 km from your home, leaves your Mercedes-Benz vehicle inoperable or unsafe to drive, and requires overnight repairs, we've got you covered. You will be reimbursed up to \$500 for hotel accommodations and up to \$600 for alternative travel expenses per incident while your car is being repaired at an authorized Mercedes-Benz dealership.

**Log on to learn more at  
mercedes-benz.ca**

Looking for more Mercedes-Benz information? Visit [mercedes-benz.ca](http://mercedes-benz.ca) to open an online window to Mercedes-Benz Canada. Get information about any model, including financing and leasing options, upcoming vehicles, or purchase Mercedes-Benz the Collection gifts and personal accessories. Our website also offers details about the Mercedes-Benz Extended Limited Warranty, Mercedes-Benz Ownership, and the history of Mercedes-Benz.



<sup>1</sup>Vehicle must be accessible from main roads. Roadside Assistance may involve charges for parts, service and towing. Depending on the circumstances, these services may be provided by an outside service provider, courtesy of Mercedes-Benz Roadside Assistance. For full details of the Roadside Assistance Program, please see your dealer. <sup>2</sup>Please see your dealer for warranty details as well as for terms, conditions and pricing for extended warranty options.

## To be continued. With a test drive.

Nowhere is a Mercedes-Benz so convincing as on the road. It is only there that you can fully experience the effortlessly superior handling that makes this car so special. You can feel how the powerful engine drives the vehicle onwards and how the precise steering movements have a direct effect on your own mood. The special atmosphere that arises during a drive in a Mercedes-Benz cannot be put down on paper. That's why we would like to invite you to reserve an appointment for a test drive at your local Mercedes-Benz dealer. Or visit [www.mercedes-benz.ca](http://www.mercedes-benz.ca). We look forward to seeing you.





© 2008 Mercedes-Benz Canada Inc.

All illustrations and specifications contained in this brochure are based on the latest product information available at the time of publication. Mercedes-Benz Canada reserves the right to make changes at any time, without notice, in colours, materials, equipment, specifications and models. Any inaccuracies in colours shown are due to reproduction variations of the printing process. Some vehicles may be shown with non-Canadian equipment. Some vehicles may be shown without side marker lights. Some vehicles are shown with optional equipment available at extra cost. Some optional equipment may not be available on all models. For current information regarding the range of models, standard features, optional equipment and/or colours available in Canada and their pricing, contact your nearest authorized Mercedes-Benz dealer or visit [mercedes-benz.ca](http://mercedes-benz.ca). harman/kardon and LOGIC7 are registered trademarks of Harman International Industries Inc. iPod is a registered trademark of Apple Computer, Inc.

Printed in Canada  
MBC-08-C09-47100E

Mercedes-Benz Canada Inc. 98 Vanderhoof Avenue, Toronto, Ontario M4G 4C9  
1-800-387-0100  
[www.mercedes-benz.ca](http://www.mercedes-benz.ca)

