

Mercedes C navigation upgrade solution[5inch screen]

Installation manual

This Mercedes C-specific interface can insert RGB navi video or CVBS video into Mercedes C screen[5 -inch screen which has 280*100 resolution]. This car has no original navigation. This interface can insert RGB-NTSC map onto the screen, and people can control the navi by original knob and keys. It also has the following advantages:

- Two display mode: one full screen mode and one high resolution mode.
- Original keys can be used to control navi very conveniently.
- ACC is generated by the interface box[ACC=12V when panel is working]
- Plug and play installation without hurting original PCB and soldering.

AV [iPod]display →



RGB-NTSC high resolution display

[only the center 80% of the NTSC-RGB is display, text is very clear]

Rotate the knob to select the part



RGB-NTSC full screen display [Press C for full display]:



1. Control with original keys:

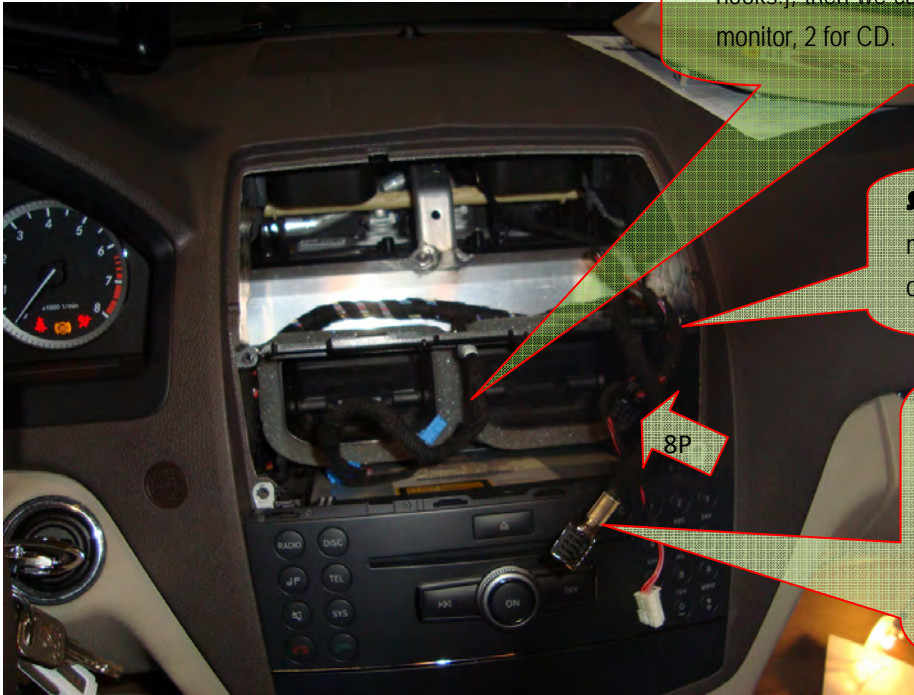
Press this key to switch to car video



C key **Short** Press = “OK” key on the navi controller
C key **LONG** press = Complete picture display or high resolution display switch。

- The knob **Press**: no function in any interface input to avoid car operations in the background.
- UP/DOWN/LEFT/RIGHT PUSH : =“UP/DOWN /LEFT/ RIGHT”operation to the navi.
- **DOWN Push for 3 seconds** : input switching RGB→AV1→AV2→Car。
- LEFT/RIGHT rotation : showing left/right portion of the video displayed in High resolution mode, and jump to high resolution automatically when in RGB input.

2. Installation:

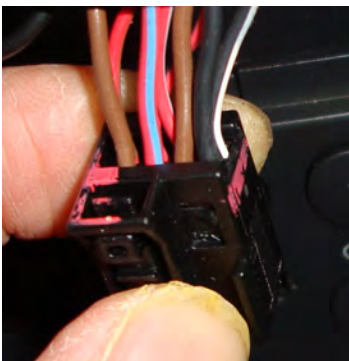


First: remove the air output part[no screws, only hooks.], then we can see four screw holes, 2 for monitor, 2 for CD.

SECOND: remove the 2 screws of the monitor, then the whole monitor can be taken out, it is not necessary to touch the CD.

Then we can see two connector:
 10P video connector to monitor,
8P CAN/power connector.
 The video is inserted on that 10P connector, the CAN/POWER are sharing the 8P connector.

8P CAN connection:



| Name | Color in Car | Color in interface-CAN-BOX |
|-----------------|---------------------------|----------------------------|
| CAN - | BLACK | BROWN with orange |
| CAN + | BLACK/WHITE | BROWN with BLUE |
| GND | BROWN [2 are the same] | BLACK |
| BATT [13.8V] | RED /Blue | YELLOW with 2A FUSE |



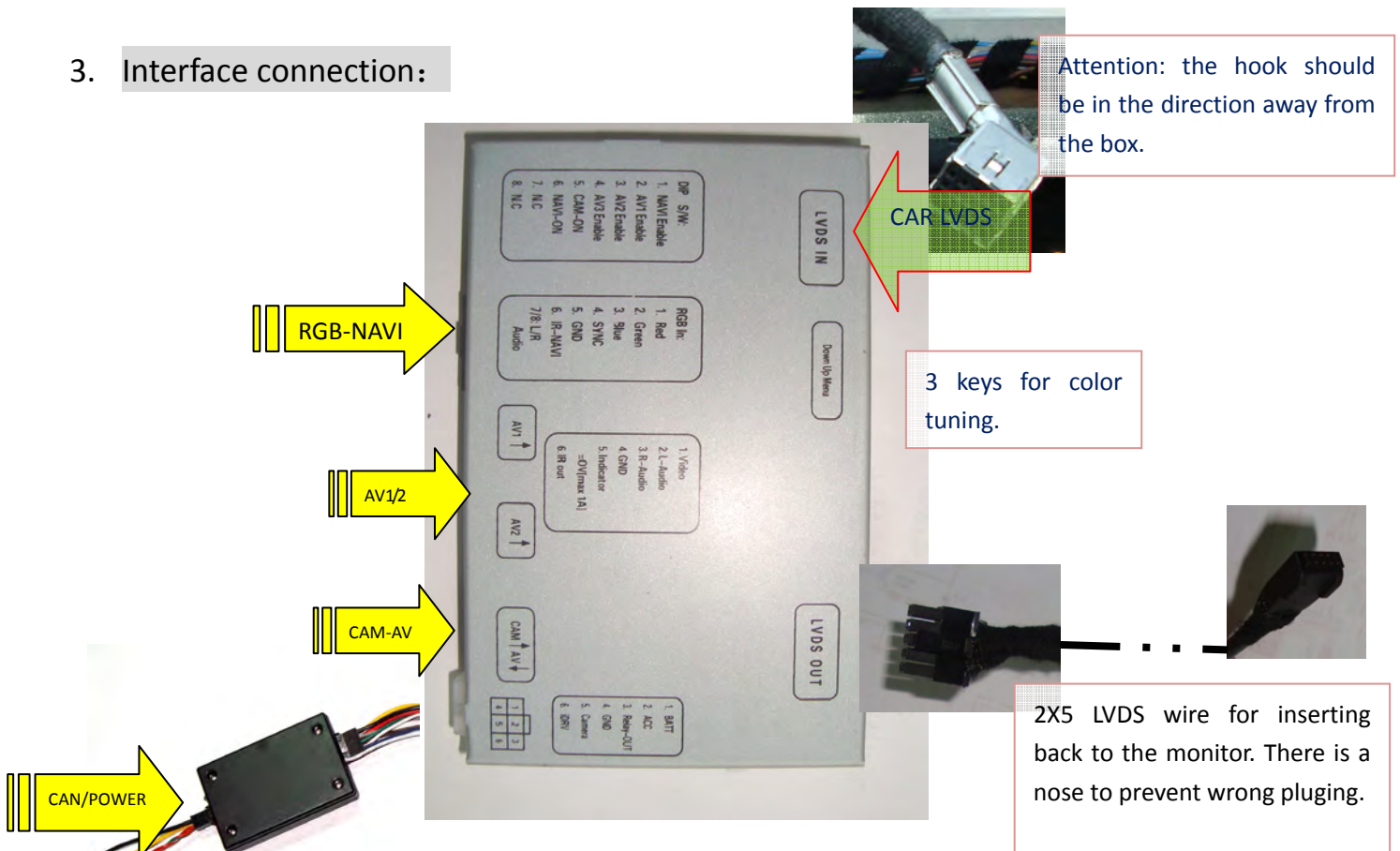
[note: CAN wrong connection is not hurting device, the LED will be blinking when connected correctly.]

The installation location for the interface and navigation box. →



Open this drawer, then 4 screws can be seen, which will release the drawer when removed. There is enough space behind. Attention to the AUX socket should be paid, since there are wires connected to it.


3. Interface connection:



CAN box's 4P should be connected to car's 8P connector.
 When not using the can box, the video is always full screen.
 The white wire Pin6=12V will switch the input.

The 6P connector 's signal definition
YELLOW: 12V battery,[can also be ACC]
RED: ACC: when=12V the unit works.
BLACK: Ground for chassis.
GREEN: reverse wire[=12V].
white: switch signal when =12V.[max 25V]
GRAY: specific control signal from the CAN box.

DIP switch setting:

| DIP |  | =ON | =OFF |
|-----|---|---|---|
| 1 | | RGB enabled | RGB disabled. |
| 2,3 | | AV1/2 enabled | AV1/2 disabled |
| 4 | | | |
| 5 | | Reverse go to AV4 [Green wire=12V] | Reverse go to car video [Green wire= 12V] |
| 6 | | Mercedes C or S big screen. [not 5-inch] | Mercedes C small screen. [5-inch] |

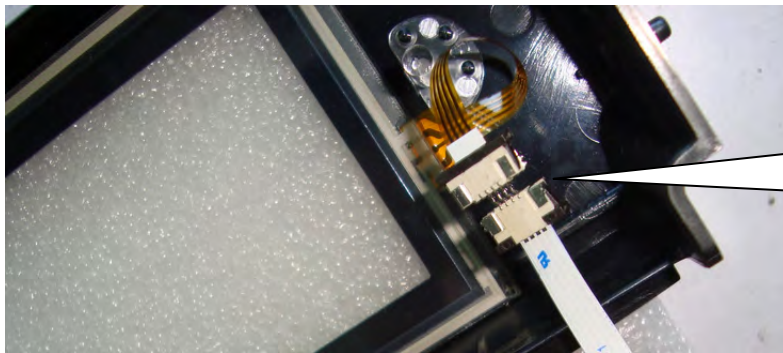
4. Touch screen connection[Optional accessory]:

When in RGB input, the original keys can be used for navi control, it is not necessary to add touch screen.

The user may also use touch screen, then handwriting on navi is possible.



The ribbon cable should be in this direction.



With the converter socket, the 4P touch can be extended to the outside.

5. Accessories:

- (1) [] Interface box.
- (2) [] CAN box with input/output wires
- (3) [] LVDS cable
- (4) [] AV input wire 2PCs + CAM+AVout wire 1PC + RGB wire 1PC.
- (5) [] optional touch screen + extended ribbon