

Installation Instructions

Package include:

Center Console Light x2



Door lights x4



Center console hardness



Front door hardness



Back door hardness



Back door extend hardness



Door light installation guide

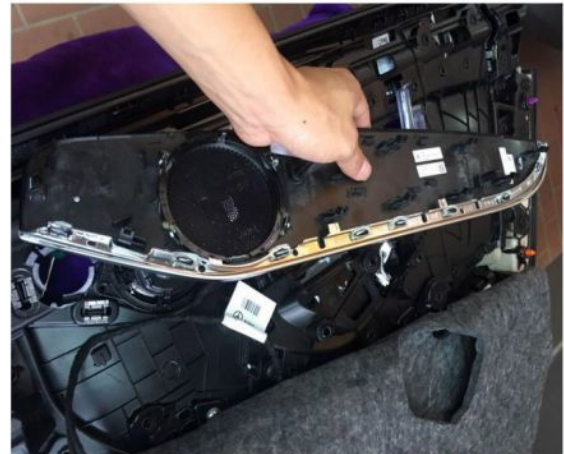
1. Use T30 screwdriver to remove the 2 screws on the door



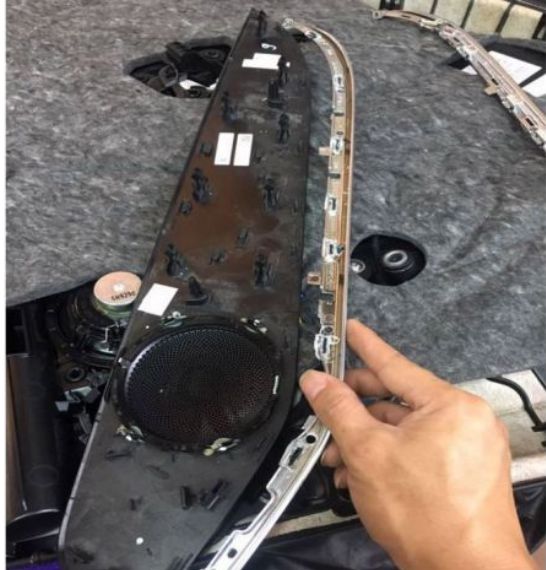
2. Lever up the iron fastener and take out the trim wood panel



3. Take out the chrome decoration strip, use the plier or electric soldering to remove the black soldering point(see below picture)



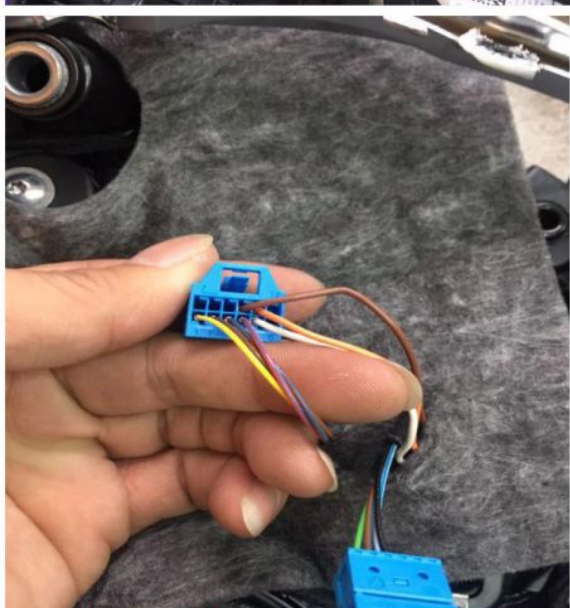
4. Install our door lights to the trim wood, use 403 rubber or electric solder to fix the chrome strip then install the trim wood back to door panel and install it back to door.



5. Install the light guide to the door panel, replace the original door handle light, and wrap the original light socket.



6. Sort out the cable and connect it to socket 6, white cable connects to #5, brown to #10, orange to #11



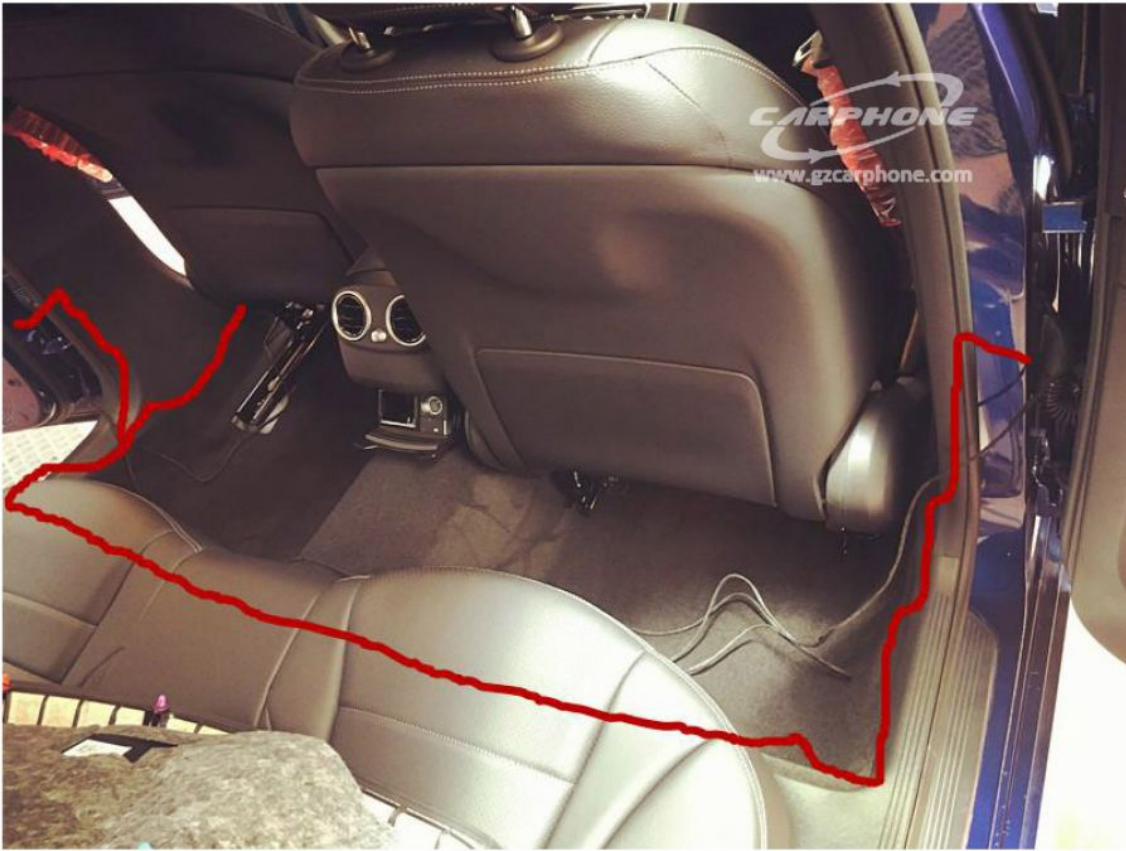
Note: above is for front door cable connection, some cars does not come with original socket for back door, then need to use extend cable. See below picture, check if there's pin in #5, #10 & #11 of socket 6. If without Pin, then need to use the extend cable



7. Extend cable layout



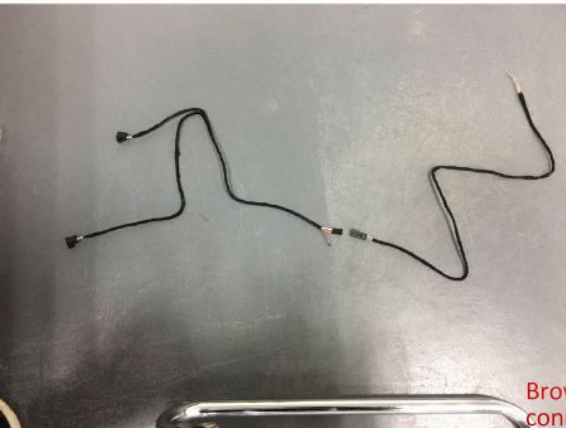
8. Hidden wire from left back door B Column to the socket on the side of right door B column and to under steering wheel



9. Socket connection picture







BAP PR05089
MOLD N° 21185

1906-0
9182-10-94
V18-H RHC
S H1 R4

Connect together
对接

Brown ground cable connect of the back door light connects to original brown cable of door handle light

**后门灯线棕色地线接
原车拉手灯棕色线**

A 205 905 62 51

JC 24H8968
K1 C1 P

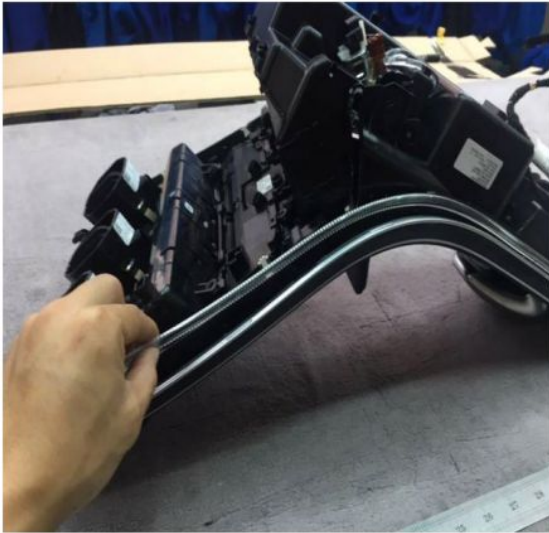
55:40

Center console light instalation guide

1. Remove the chrome armrest switch, there are 2 pcs T20 screws, remove them then take out the center console

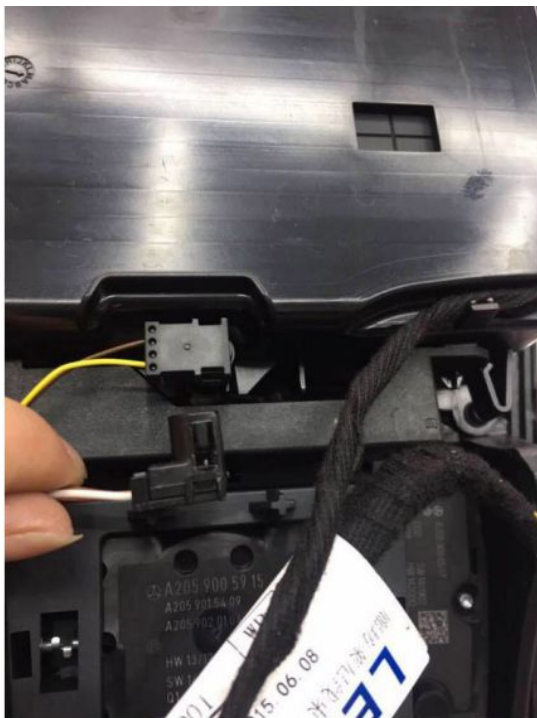


2. Install the center console light guides to the original light slot

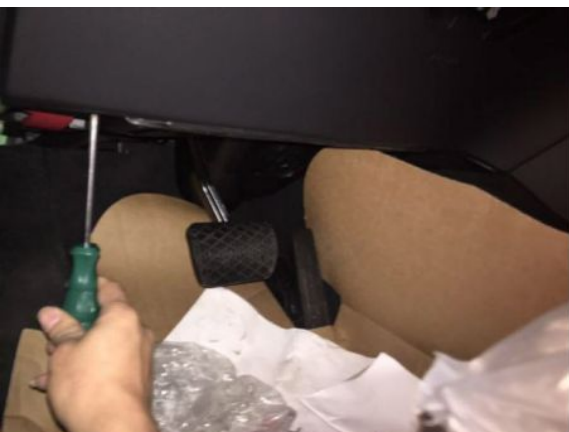


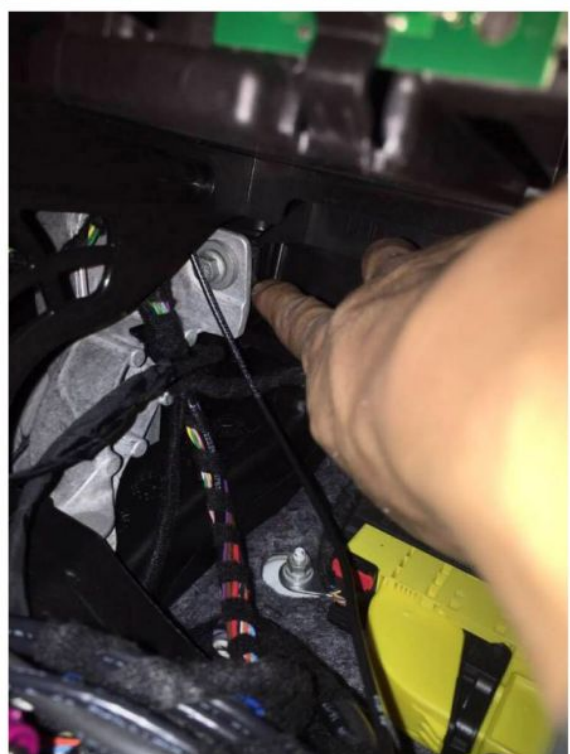
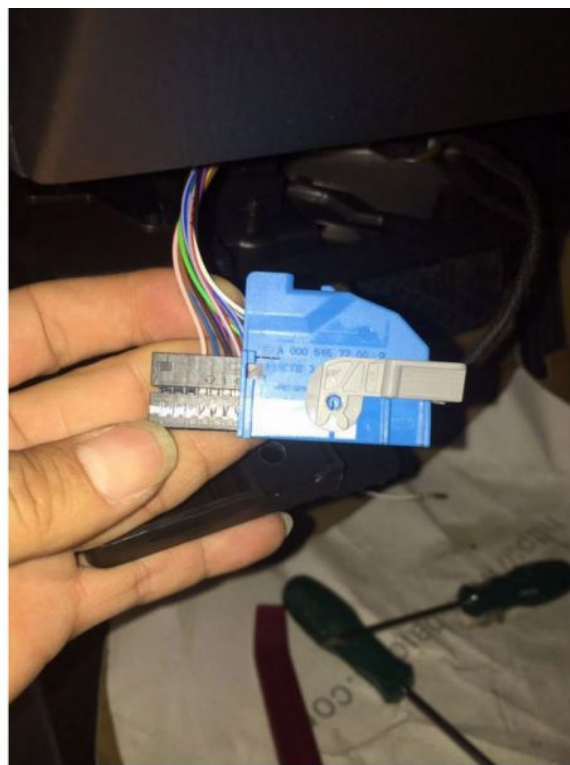
3. Install the light guide, plug the harness, original cup holder and sundry box also need to change, total 6 position.





4. Open the panel under the steering wheel, cable go through panel, connect it to the left side blue socket, orange to #1, white to #13, brown to ground, the recover the center console





Programming

Turn the key to ACC, multimedia system turns on, plug the OBD tool, programming start, wait around 10-20 seconds, finished upgrading, take out the OBD, turn off and lock the car, wait 10 minutes, restart the multimedia system, then you can find the ambient light options in Auto Setting





Finish



