

C-Class Sedan



W205

Model Year 2020

Preliminary – Subject to Change

Mercedes-Benz

The best or nothing.





Important note

The information presented in this guide is based on the most current information available and is intended for internal use only. Mercedes-Benz reserves the right to make changes at any time, without notice, to colors, materials, equipment, special specifications and models.

Pricing may not yet be finalized for some models or options.

Due to variances among monitors and printers the colors that appear on your screen and printouts may not be exact.

For illustrative purposes, some images may show vehicles with European Specification.

Revision History

<i>Date</i>	<i>Changes</i>
2/25/2019	Initial Publication
3/25/2019	Initial Publication including AMG's
4/16/2019	- AMG: Graphite Grey Metallic (831) no longer available - Rear Cross-Traffic Alert included in Parking Assistance Package (DA3)
5/2/2019	- C350WE and C350WE4 cancelled.
5/15/2019	- Added MSRP's for Mercedes-Benz and Mercedes-AMG models



C300 & C300 4MATIC



Models



What's new



Standard Equipment



Exterior Paint Colors



Wheels



Interior Upholstery



Interior Trims



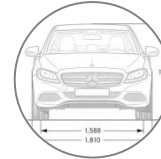
Option Packages



Stand-Alone Options



Options in Detail



Specifications



C 300

C300W - 205.083

- MSRP \$41,400
- 2.0L inline-4 turbo engine
- 9-Speed Automatic Transmission
- 255 hp
- 273 lb-ft
- 5.9 sec (0-60 mph)
- Launch date: Early Fall 2019



C 300 4MATIC

C300W4 - 205.084

- MSRP \$43,400
- 2.0L inline-4 turbo engine
- 9-Speed Automatic Transmission
- 255 hp
- 273 lb-ft
- 5.9 sec (0-60 mph)
- Launch date: Early Fall 2019





Standard Equipment

- 10.25" Center Display (859), previously standalone and in Multimedia Package (DA5), now standard
- 18" Twin 5-Spoke (22R) now standard
- Blind Spot Assist (234), previously in Premium Package (DP1), now standard
- KEYLESS-GO (889), previously in Premium Package (DP1), now standard
- HANDS-FREE ACCESS, previously in Premium Package (DP1), now standard
- Electronic Trunk Closer, previously in Premium Package (DP1), now standard

Optional Equipment/Paints/Upholstery

- 3-Zone Climate Control now available (581)
- Emerald Green Metallic (989) discontinued
- *designo* Saddle Brown Leather interior (P87) discontinued
- Leather Seating Package (318) discontinued. Package components now available as separate standalone options (242 3-Stage Passenger Seat Memory with Adjustable Thigh Support and leather upholstery)
- Premium Package (DP1) now consists of SiriusXM® (536), Burmester Surround Sound System (810), and 64-Color Ambient Lighting with Illuminated Door Sills (877/U25)





3-Zone Climate Control (581)



3-Zone Climate Control

Available for all models

The automatic climate control system with 3 climate zones and 3 airflow modes provides additional levels of comfort and control to C-Class passengers. The driver and the front passenger are able to regulate temperature and air distribution independently of one another. Temperature and airflow for the rear can be adjusted separately as the 3rd zone.

Overview of the 3-Zone automatic climate control:

- Three climate zones with individual temperature controls (driver's side, front passenger side and rear)
- Automatic control of temperature, air distribution and airflow
- Air distribution for driver and front passenger sides individually and separately adjustable
- 3 airflow modes for setting the airflow – diffuse, medium or focused
- Indirect ventilation for the passenger compartment in the dashboard
- Sensors keep the climate constant at the desired level for each zone
- Constant monitoring of incoming air for harmful gasses with automatic air recirculation setting
- A fine-particle activated charcoal filter improves the air quality in the vehicle. It filters dust, soot, and pollen from the air and also reduces pollutants and unpleasant odors
- Dew point sensors prevent the windows from fogging up and ensure energy-efficient air conditioning
- Rear control unit for regulating temperature and airflow in the rear
- Rear center vents with rear booster fan



Performance & Handling

- 2.0L inline-4 turbo engine
- 9G-TRONIC 9-Speed Automatic Transmission
- Multi-Link Front Suspension
- Multi-Link Independent Rear Suspension
- All-Season Tires
- ECO Start/Stop Technology
- 18" Wheels with Adaptive Braking Technology
- DYNAMIC SELECT

Comfort & Convenience

- LED Headlamps & Taillamps
- Smartphone Integration
- KEYLESS-GO®
- KEYLESS-START
- HANDS-FREE ACCESS
- Electronic Trunk Closer
- Blind Spot Assist
- Power sunroof
- 10.25" high-resolution center display
- Power front seats with driver-seat memory
- 4-way power driver's lumbar support
- Wood Trim with Analog Clock
- FrontBass® 5-Speaker Audio System
- Two USB ports
- Power tilt & telescoping steering column
- Power windows with express-up/down
- Automatic light-sensing headlamps
- 40/20/40-split folding rear seats
- Multifunction Leather Steering Wheel w/ Haptic Touchpads
- Dual-Zone Climate Control
- Rain-sensing windshield wipers
- Electronic Cruise Control
- Power-Folding Side Mirrors
- Extendable sun visors
- Rearview camera
- HD Radio™
- Bluetooth technology (for hands-free calling/audio streaming)

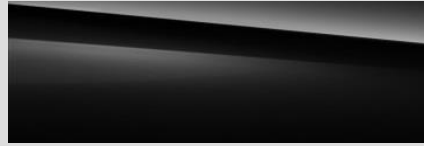
Safety & Security

- New vehicle 4-year/50,000 mile warranty
- 24h Roadside Assistance Program
- 3-Point Seat Belt with Pretensioners & Adaptive Belt Force Limiter
- Front Dual-Stage Air Bags
- Front and Rear Side Window Air Bags
- Front Side Air bags
- Driver Knee Air Bag
- LATCH/ISOFIX Child Restraint System for Rear Seats
- ATTENTION ASSIST®
- Active Brake Assist
- PRE-SAFE®
- SmartKey
- Tire Pressure Monitoring System (TPMS)
- Antitheft alarm

Exterior Paint Colors



Non-metallic Paints

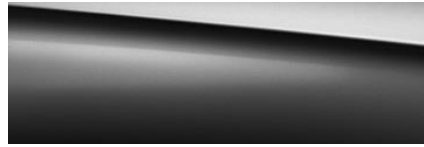


040
Black
Option price: \$0

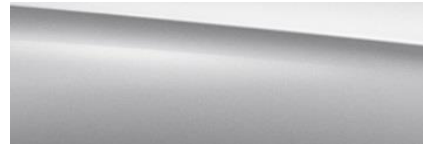


149
Polar White
Option price: \$0

Metallic Paints



197
Obsidian Black
Option price: \$720



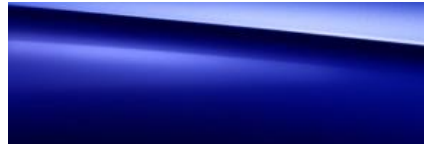
775
Iridium Silver
Option price: \$720



859
Mojave Silver
Option price: \$720



890
Lunar Blue
Option price: \$720



896
Brilliant Blue
Option price: \$720



992
Selenite Grey
Option price: \$720

designo Paints



996
Cardinal Red Metallic
Option price: \$1,080



799
Diamond White Metallic
Option price: \$1,515



R43
17" Twin 5-Spoke
R02, R66
Option price: \$0



22R
18" Twin 5-Spoke
R02, R66
Option price: \$0
Standard



R86
18" Multispoke w/ Black Accents
R02, R66
Option price: \$200



RSJ
18" AMG 5-Spoke
R02, R66
Option price: \$0
Requires AMG Line (DG3)



RSK
18" AMG 5-Spoke w/
Black Accents
R02, R66
Option price: \$0
Requires Night Package (DC1)



788
19" AMG Multispoke
R01, R66
Option price: \$500
Requires AMG Line (DG3)



665
19" AMG Multispoke
w/ Black Accents
R01, R66
Option price: \$500
Requires Night Package (DC1)



604
19" AMG Twin 5-Spoke w/
Black Accents
R01, R66
Option price: \$500
Requires Night Package (DC1)





<i>Code</i>	<i>Wheel Size</i>	<i>Description</i>	<i>Wheel Dimensions</i>	<i>Mobility</i>	<i>MSRP</i>
R43	17"	Twin 5-Spoke Wheel	225/50 R17 on 7 J x 17 ET 48.5	R02, R66	\$ 0
22R	18"	Twin 5-Spoke Wheel	225/45 R18 on 7.5 J x 18 ET 44 (Front) 245/40 R18 on 8.5 J x 18 ET 56 (Rear)	R02, R66	\$ 0 <i>Standard</i>
R86	18"	Multispoke Wheel w/ Black Accents	225/45 R18 on 7.5 J x 18 ET 44 (Front) 245/40 R18 on 8.5 J x 18 ET 56 (Rear)	R02, R66	\$ 200
RSJ	18"	AMG 5-Spoke Wheel	225/45 R18 on 7.5 J x 18 ET 44 (Front) 245/40 R18 on 8.5 J x 18 ET 49 (Rear)	R02, R66	\$ 0 <i>Requires AMG Line (DG3)</i>
RSK	18"	AMG 5-Spoke Wheel w/ Black Accents	225/45 R18 on 7.5 J x 18 ET 44 (Front) 245/40 R18 on 8.5 J x 18 ET 49 (Rear)	R02, R66	\$ 0 <i>Requires Night Package (DC1)</i>
788	19"	AMG Multispoke Wheel	225/40 R19 on 7.5 J x 19 ET 44 (Front) 255/35 R19 on 8.5 J x 19 ET 52 (Rear)	R01, R66	\$ 500 <i>Requires AMG Line (DG3)</i>
665	19"	AMG Multispoke Wheel w/ Black Accents	225/40 R19 on 7.5 J x 19 ET 44 (Front) 255/35 R19 on 8.5 J x 19 ET 52 (Rear)	R01, R66	\$ 500 <i>Requires Night Package (DC1)</i>
604	19"	AMG Twin 5-Spoke Wheels w/ Black Accents	225/40 R 19 on 7.5 J x 19 ET 44 (Front) 255/35 R 19 on 8.5 J x 19 ET 52 (Rear)	R01, R66	\$ 500 <i>Requires Night Package (DC1)</i>

Interior Upholstery – MB-TeX



101

Black

Option price: \$0

Not available with AMG Line (DG3)



115

Silk Beige

Option price: \$0

Not available with AMG Line (DG3)



138

Magma Grey

Option price: \$0

Not available with AMG Line (DG3)



141

AMG Black

Option price: \$0

Requires AMG Line (DG3)



144

AMG Saddle Brown

Option price: \$0

Requires AMG Line (DG3)



145

AMG Silk Beige

Option price: \$0

Requires AMG Line (DG3)



Interior Upholstery – Leather



201
Black

Not available with AMG Line (DG3)



215
Silk Beige

Not available with AMG Line (DG3)



228
Magma Grey

Not available with AMG Line (DG3)



251
AMG Black

Requires AMG Line (DG3)



267
AMG Cranberry Red

Requires AMG Line (DG3)



255
AMG Silk Beige

Requires AMG Line (DG3)



264

AMG Saddle Brown

Requires AMG Line (DG3)



Interior Upholstery – *designo* Nappa leather



975

Two-Tone Platinum White Pearl & Black
*Requires **designo** Package (DD1)*





51U

Black Fabric Headliner

Option price: \$0

Available with all interiors



55U

Porcelain Fabric Headliner

Option price: \$0

*Available only with Silk Beige MB-Tex (115)
or Silk Beige Leather (215)*



58U

Crystal Grey Fabric Headliner

Option price: \$0

Available only with Black MB-Tex (101), Magma Grey MB-Tex (138), Black Leather (201) or Magma Grey Leather (228)



Interior Upholstery



<i>Code</i>	<i>Upholstery</i>	<i>Seats</i>	<i>Floor Mats</i>	<i>Upper Dash/Lower Dash</i>	<i>Seat Belts</i>	<i>Steering Wheel</i>	<i>Headliner</i>
101	Black MB-Tex	Black	Black	Black/Black	Black	Black	Crystal Grey or Black
115	Silk Beige MB-Tex	Beige	Black	Black/ Silk Beige	Black	Black	Porcelain or Black
138	Magma Grey MB-Tex	Magma Grey	Black	Black/Black	Black	Black	Crystal Grey or Black
141	AMG Black MB-Tex	Black	Black	Black/Black	Black	Black	Black
144	AMG Saddle Brown MB-Tex	Saddle Brown	Black	Black/Black	Black	Black	Black
145	AMG Silk Beige MB-Tex	Silk Beige	Black	Black/Black	Black	Black	Black
201	Black Leather	Black	Black	Black/Black	Black	Black	Crystal Grey or Black
215	Silk Beige Leather	Beige	Black	Black/ Silk Beige	Black	Black	Porcelain or Black
228	Magma Grey Leather	Magma Grey	Black	Black/Black	Black	Black	Crystal Grey or Black
251	AMG Black Leather	Black	Black	Black/Black	Black	Black	Black
255	AMG Silk Beige Leather	Silk Beige	Black	Black/Black	Black	Black	Black
264	AMG Saddle Brown Leather	Saddle Brown	Black	Black/Black	Black	Black	Black
267	AMG Cranberry Red Leather	Cranberry Red	Black	Black/Black	Black	Black	Black
975	Platinum White Pearl/ Black Nappa Leather	Platinum White Pearl/Black	Black w/ White Piping	Black MB-Tex/Black	Black	Black	Black
974	Saddle Brown/ Black Nappa Leather	Saddle Brown	Black w/ Brown Piping	Black MB-Tex/Black	Black	Black	Black



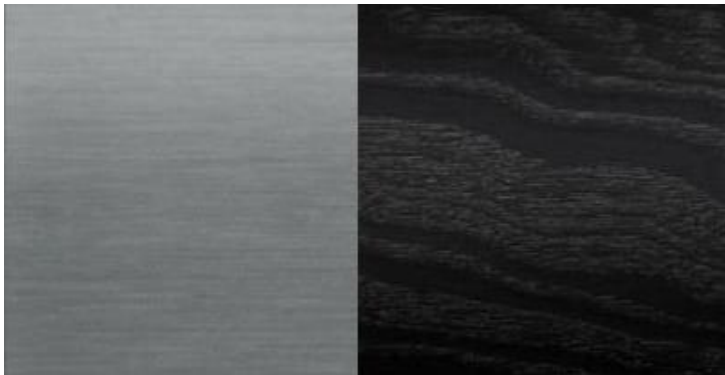
H09
Natural Grain Brown Ash Wood trim
Option price: \$0



H07
Dark Brown Linden Wood Trim
Option price: \$0



H31
Natural Grain Grey Oak Wood Trim
Option price: \$0



737 + 739
Natural Grain Black Ash Wood Console and Brushed
Aluminum Door Trim
Option price: \$0



H33
Natural Grain Walnut Wood Trim
Option price: \$0



<i>Code</i>	<i>Packages</i>	<i>Availability</i>	<i>MSRP</i>
DP1	Premium Package <ul style="list-style-type: none"> ▪ 536 – SiriusXM® Satellite Radio ▪ 810 – Burmester® Surround Sound System ▪ 877 – 64-Color Ambient Lighting ▪ U25 – Illuminated Door Sills 	All Models	\$ 1,400
DA4	Exterior Lighting Package <ul style="list-style-type: none"> ▪ 608 – Adaptive Highbeam Assist ▪ 640 –LED Intelligent Light System 	All Models	\$ 900
DA5	Multimedia Package <i>Requires Premium Package (DP1)</i> <ul style="list-style-type: none"> ▪ 531 – COMAND® Navigation with Voice Control ▪ 448 – Touchpad ▪ 502 – Navigation Map Updates for First Three Years 	All Models	\$ 2,350
DA3	Parking Assistance Package <ul style="list-style-type: none"> ▪ 235 – PARKTRONIC with Active Parking Assist ▪ 501 – Surround View System ▪ 852 – Parking Damage Detection ▪ Rear Cross-Traffic Alert 	All Models	\$ 1,140



<i>Code</i>	<i>Packages</i>	<i>Availability</i>	<i>MSRP</i>
DG3	<p>AMG Line <i>When ordered with Heated Steering Wheel (443), the flat-bottom steering wheel is replaced with a round steering wheel</i></p> <ul style="list-style-type: none"> ▪ 772 – AMG Body Styling ▪ P29 – AMG Line Interior incl. flat-bottom steering wheel, AMG floor mats, and brushed aluminum sport pedals w/ rubber studs ▪ P31 – AMG Line Exterior incl. braking system with perforated front discs and Mercedes-Benz lettered brake calipers ▪ 51U – Black Fabric Headliner ▪ 5U4 – Diamond Grille ▪ 486 – Sport Suspension with Sport Steering System ▪ Choice of spoiler (D10, D20, D21) 	All Models	\$ 1,850
DC1	<p>Night Package <i>Requires AMG Line (DG3)</i></p> <ul style="list-style-type: none"> ▪ P55 – Night Package code ▪ High-gloss black elements: front splitter, grille trim, rear diffuser, side mirrors, window trim, side skirts ▪ Wheel Choice of: <ul style="list-style-type: none"> ▪ RSK - 18" AMG 5-Spoke Wheels w/ Black Accents with all-season, run-flat tires ▪ 665 – 19" AMG Multispoke Wheels w/ Black Accents with performance, run-flat tires (+\$500) ▪ 604 – 19" AMG Twin 5-Spoke Wheels w/ Black Accents with performance, run-flat tires (+\$500) 	All Models	\$ 400



<i>Code</i>	<i>Packages</i>	<i>Availability</i>	<i>MSRP</i>
DA2	<p>Driver Assistance Package <i>Requires Multimedia Package (DA5)</i></p> <ul style="list-style-type: none"> ▪ Active Distance Assist DISTRONIC® ▪ Active Steering Assist ▪ Evasive Steering Assist ▪ Active Lane Change Assist ▪ Active Lane Keeping Assist ▪ Active Blind Spot Assist ▪ Active Brake Assist w/ Cross-Traffic Function ▪ Active Emergency Stop Assist ▪ Active Speed Limit Assist ▪ Route-Based Speed Adaptation 	All Models	\$ 1,700
DD1	<p><i>designo</i> Two-Tone Platinum White Pearl / Black Nappa leather <i>Not with Heated Steering Wheel (443)</i> <i>Requires Heated Front Seats (873) or Heated and Ventilated Seats (401)</i></p> <ul style="list-style-type: none"> ▪ 975 - <i>designo</i> Platinum White Pearl / Black Two-Tone Nappa leather seats in diamond quilt design with white contrast stitching ▪ U04 - <i>designo</i> black floor mats with white border and <i>designo</i> badge in the front floor mats ▪ U09 - Dashboard and Upper Doors in MB-TEX with topstitching ▪ Center door panels in <i>designo</i> Platinum White Pearl Nappa leather and center console armrest in <i>designo</i> Black Nappa leather ▪ Flat-bottom sport multifunction steering wheel in black Nappa leather (Standard round steering wheel always replaced) 	All Models	\$ 3,800

Stand-Alone Options



<i>Code</i>	<i>Options</i>	<i>Availability</i>	<i>MSRP</i>
242	3-Stage Passenger Seat Memory with Adjustable Thigh Support	All Models	\$ 230
355	Pre-Installation for SD-Card Navigation	All Models	\$ 200
401	Heated & Ventilated Front Seats <i>Only available w/ leather upholstery or designo Package (DD1)</i> <i>Not available w/ Heated Front Seats (873) (heating function already included)</i>	All Models	\$ 1,030
413	Panorama roof	All Models	\$ 1,000
443	Heated Steering Wheel <i>Not available with designo Packages (DD1)</i> <i>AMG Line (DG3) loses Flat-bottom Steering Wheel</i>	All Models	\$ 250
463	Head-Up Display	All Models	\$ 990
464	12.3" Digital Instrument Cluster	All Models	\$ 750
540	Power Rear-window Sunshade	All Models	\$ 440
581	3-Zone Climate Control	All Models	\$ 760
873	Heated Front Seats <i>Not available with Heated & Ventilated Front Seats (401)</i>	All Models	\$ 580
897	Inductive Wireless Charging & NFC Pairing	All Models	\$ 200
U09	MB-Tex Upper Dashboard and Doors with Topstitching <i>Included in designo Packages (DD1)</i>	All Models	\$ 350

Stand-Alone Options



<i>Code</i>	<i>VPC Installed Accessories</i>	<i>Availability</i>	<i>MSRP</i>
D03	Illuminated Star <i>Not with Driver Assistance Package (DA2)</i>	All Models	\$ 450
D07	Wheel Locking Bolts	All Models	\$ 150
D08	Chrome Door Handle Inserts	All Models	\$ 100
D10	Body Color Rear Spoiler <i>Not available with Carbon Fiber-look Spoiler (D20) or Black Spoiler (D21)</i>	All Models	\$ 350
D12	Black Mirror Housing Covers <i>Not available with Night Package (DC1) or Carbon Fiber-look Mirror Housing Covers (D17)</i>	All Models	\$ 250
D16	LED Logo Projectors (Set of 2)	All Models	\$ 275
D17	Carbon Fiber-look Mirror Housing Covers <i>Not available with Night Package (DC1) or Black Mirror Housing Covers (D12)</i>	All Models	\$ 250
D20	Carbon Fiber-look Spoiler <i>Not available with Body Color Rear Spoiler (D10) or Black Spoiler (D21)</i>	All Models	\$ 350
D21	Black Spoiler <i>Not available with Body Color Rear Spoiler (D10) or Carbon Fiber-Look Spoiler (D20)</i>	All Models	\$ 350
D22	MB Entry Navigation	All Models	\$ 625
D28	Comfort Box	All Models	\$ 250
D33	All-Weather Floor Mats	All Models	\$ TBD



Smartphone Integration (14U)

Standard equipment

Includes Android Auto and Apple CarPlay



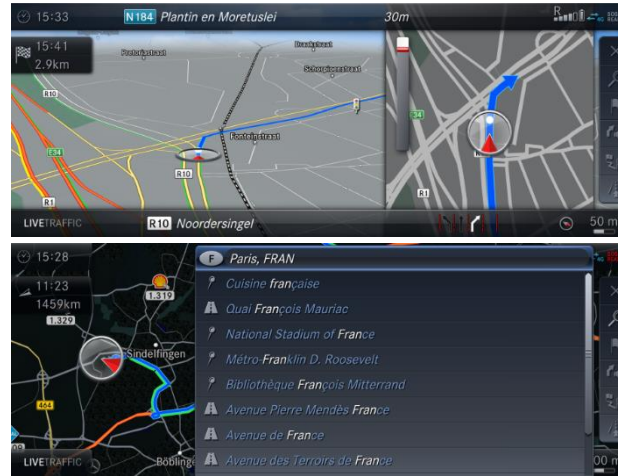
Smartphone Integration makes safe use of mobile devices possible while on the move. The connection to the smartphone allows access to up-to-date software and data such as navigation and traffic information, media (streaming media and IP radio) as well as contact data and messaging. To prevent driver distraction while on the move, there is no complete duplication of smartphone content.

A data connection via the mobile phone is necessary for certain functions. The functions supported also depend on the smartphone. The information provided by the smartphone manufacturer will also indicate the compatible devices and functions.

MB Entry Navigation (26A)

Requires Pre-Installation for SD Card Navigation (355)

Option price: \$625



Mercedes-Benz has developed an in-house navigation system via an SD card with the same look and feel as the high-end COMAND Navigation and with similar functionality. This replaces the outgoing Garmin SD-Card Navigation. The MB Entry Navigation is capable of route guidance with an estimated 25% speed increase and also includes LiveTraffic and Car-to-X Communication.

Please note that the card must be ordered with the 355 Pre-Installation for SD-Card Navigation before MB Entry Navigation can be loaded onto the vehicle. The dealer or VPC can install MB Entry Navigation.

Multimedia Package (320)

Requires Premium Package (P01)

Option price: \$2,600



The Multimedia Package offers the latest in headunit and navigation software for the C-Class. COMAND has been upgraded to NTG 5.5 - the same level as the E-Class and S-Class, and includes Enhanced Voice Control. Full maps with 3D capability and 3 years of free updates are included as well as SNAP overlays for gas prices, weather, parking availability, and more. Live Traffic information and Car-to-X Communication are also included alongside COMAND.

This package also includes the Central Controller and Touchpad as well as the larger, 10.25" central display.

Multimedia Package is required for the Driver Assistance Package and the Digital Instrument Cluster (464) as well as any online functions like MB Apps and WiFi.



Digital Instrument Cluster



Digital Instrument Cluster (464) – Requires Multimedia Package (320)

Option price: \$750

For MY2019, the C-Class will now offer the option to have a high-resolution 12.3” digital instrument cluster with three different modes: Classic, Sport, and Progressive. Unlike many other models with this option, the C-Class integrates the digital instrument cluster within the dash so the geometry of the dash is the same as without the option.

The three separate modes allow the driver to customize the digital instrument cluster to his/her liking. Additionally, with the added digital space, there is greater functionality for navigation, multimedia, and other information within the digital instrument cluster itself.



Pictured Top: “Classic” design

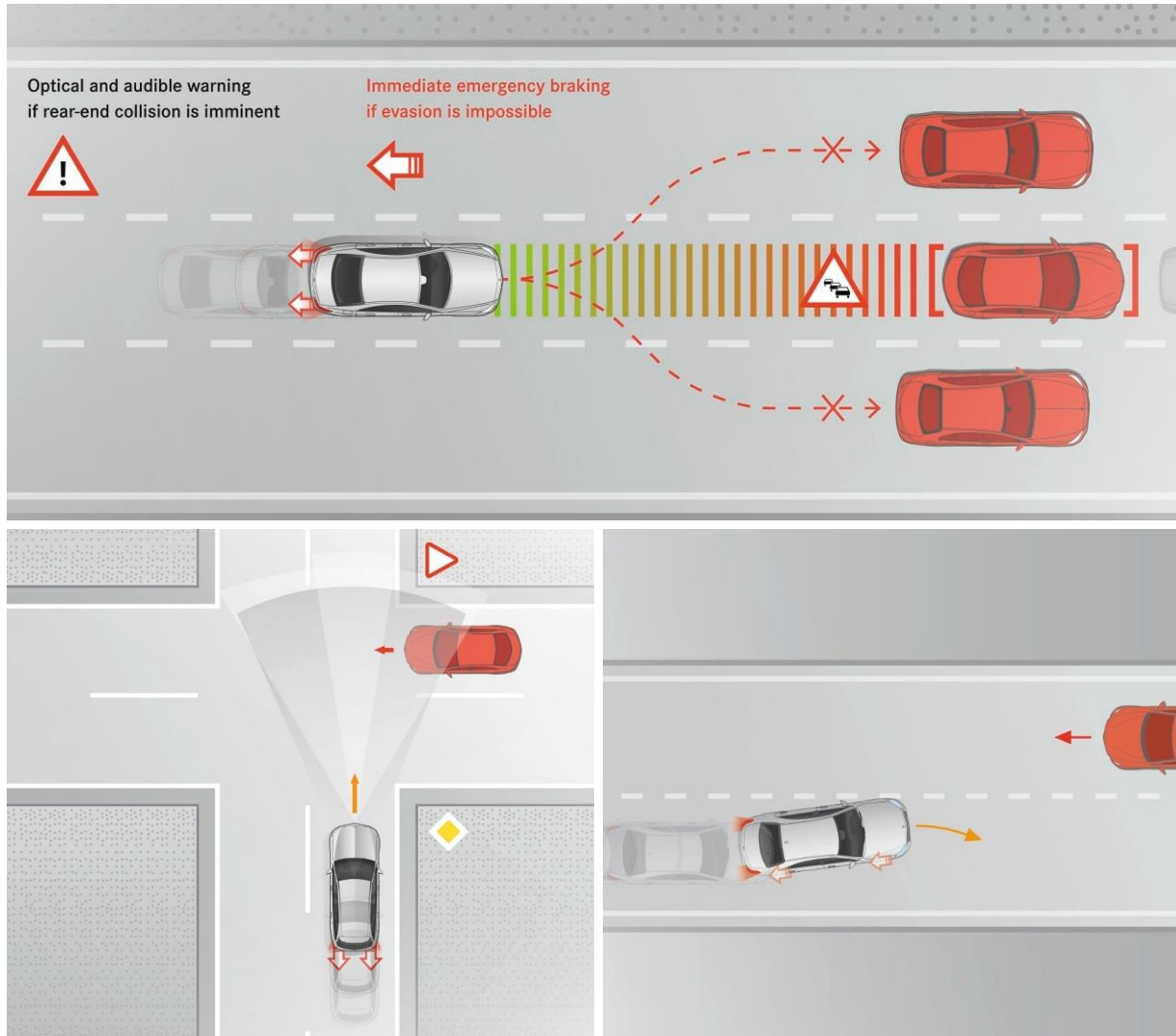
Pictured Middle: “Sport” design

Pictured Bottom: “Progressive” design





Driver Assistance Package



Driver Assistance Package (997)

Option price: \$2,250

- **Active Distance Assist DISTRONIC®** is able to follow a vehicle in front at a pre-selected distance at wider range of speeds
- **Active Steering Assist** functions at a wider range of speeds and can now actively intervene even if road lines are unclear or non-existent at certain speeds; can now function in curves with a tighter radius
- **Active Emergency Stop Assist** brakes the vehicle to a standstill in its lane if it detects that the driver is no longer actively driving the vehicle while it is on the move with Active Distance Assist DISTRONIC and Active Steering Assist engaged. Can now unlock the doors when the vehicle is stationary to allow first aid responders immediate access to the vehicle's interior. The system simultaneously makes an emergency call
- **Active Lane Change Assist** is a radar-and-camera-based system that aids the driver when changing lanes. When a turn is indicated, this feature will aid with steering into the adjacent lane if it detects the lane is empty
- **Active Speed Limit Assist** can adapt vehicle speed to identified speed limits and can now adjust preemptively when speed limits are going to change
- **Route-Based Speed Adaptation** the vehicle is now able to reduce the speed in anticipatory mode by referencing the COMAND map data ahead of bends, junctions, roundabouts, toll booths and exit roads.
- **Active Brake Assist with Cross-Traffic Function**
- **Evasive Steering Assist** this system assists by adding calculated steering torque to aid in steering wheel movement when a driver deliberately or instinctively performs an evasive maneuver around a pedestrian
- **Active Blind Spot Assist** is active at a wider range of speeds and informs the driver to help avoid an imminent side impact by single-sided braking
- **Active Lane Keeping Assist** is active now at a wider range of speeds

Specifications



	<i>C 300</i>	<i>C 300 4MATIC</i>
Engine Configuration	2.0L Inline-4 Turbo	2.0L Inline-4 Turbo
Power (hp)	255	255
Torque (lb-ft)	273	273
Displacement (cc)	1.991	1.991
Acceleration 0-60 mph (sec)	5.7	5.7
Fuel Economy (Cty/Hwy/Comb)	TBD	TBD
Top Speed (mph)	130 (lim.)	130 (lim.)
Fuel Requirement (Octane)	91	91
# Valves per cylinder	4	4
Compression	9.8 : 1	9.8 : 1
Transmission	9G-TRONIC PLUS	9G-TRONIC PLUS
Transmission Speeds	9	9
Drive Configuration	Rear-Wheel Drive	All-Wheel Drive
Fuel Tank Size (gallons)	17.4	17.4
Trunk Size (cubic feet)	12.6	12.6
Curb Weight (lbs)	TBD	TBD
Vehicle Length (in.)	184.5	184.5
Vehicle Width w/ exterior mirrors (in.)	79.5	79.5
Vehicle Width w/o exterior mirrors (in.)	71.3	71.3
Vehicle Height (in.)	56.8	56.8
Wheelbase (in.)	111.8	111.8
Track Width Front/Rear (in.)	61.53/60.86	61.61/60.75
Coefficient of Drag (Cd)	TBD	TBD

Specifications* – C300 AMG Line

