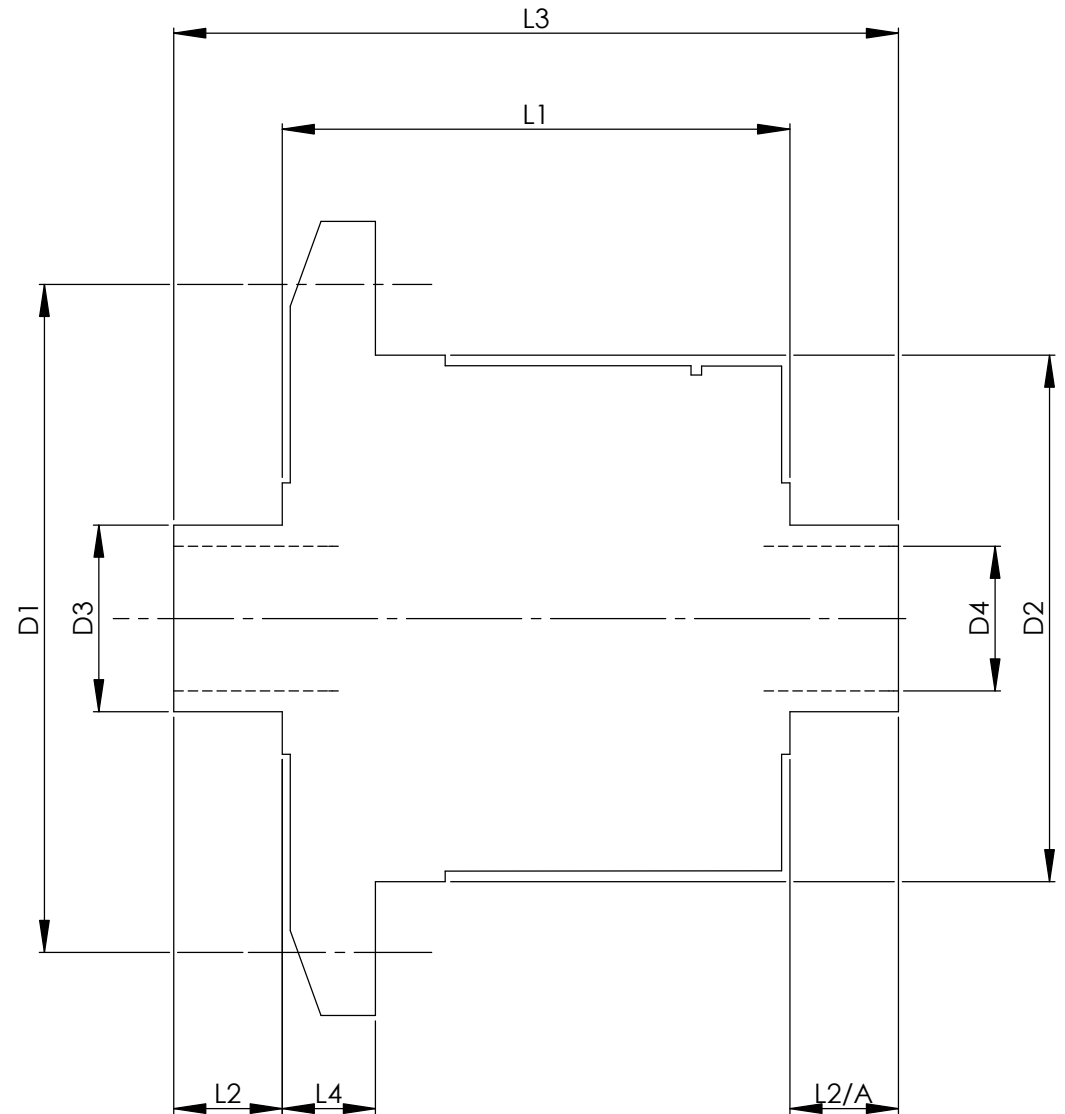


		INCH	MM
CROWN WHEEL BOLT PCD	D1	5.8267	148
No. OF BOLTS		10	10
THREAD / THRO' HOLE		0.492	12.5
CROWN WHEEL SPIGOT DIA	D2	5.001	127.0
BEARING DIA	D3	2.167	55.0
BEARING DISTANCE	L1	5.516	140.1
SPIGOT LENGTH	L2	0.982	25.0
	L2/A	0.982	25.0
OVERALL LENGTH	L3	7.480	190.0
BEARING/CROWN WHEEL	L4	1.339	34.0
BORE	D4	1.260	32.0
DRIVE SHAFT SPLINE:-			
No. OF TEETH		27	
PITCH		24/48 DP	
TYPE		FLAT ROOT	SIDE FIT
PRESSURE ANGLE		30 DEG	



TITLE R.W.D. DIFF DATA SHEET.
SCALE 1:1 U.O.S. SHEET 1 OF 1
<b>Drg. No.</b> QDF7V

**Quaife Design & Development.**

IF IN DOUBT, ASK.

THIS DRAWING OR DESIGN IS STRICTLY CONFIDENTIAL & THE COPYRIGHT THEREIN IS THE EXCLUSIVE PROPERTY OF R.T. QUAIFF ENGINEERING LTD. AND MAY NOT BE USED COPIED OR EXHIBITED WITHOUT THEIR WRITTEN PERMISSION.

FINISH. MACH.	GRIND@G
LIMITS. FRACT. ± 1/64"	
DEC. ± 0.005"	
MATERIAL.	
TREATMENT.	
ISSUE. 01 DATE. 23.5.05	
DRAWN BY. M.L.M.	
<b>Used In.</b> Mercedes 210	(220 353 0201)