

2003 Mercedes Benz C 32 AMG (203.065) V6-3.2L SC (112.961)

Vehicle » Technical Service Bulletins » All Technical Service Bulletins » Body - Door Frame Corrosion

Date: July 7, 2008

Order No.: P-B-72.00/88

Supersedes:

Group: 72

SUBJECT:

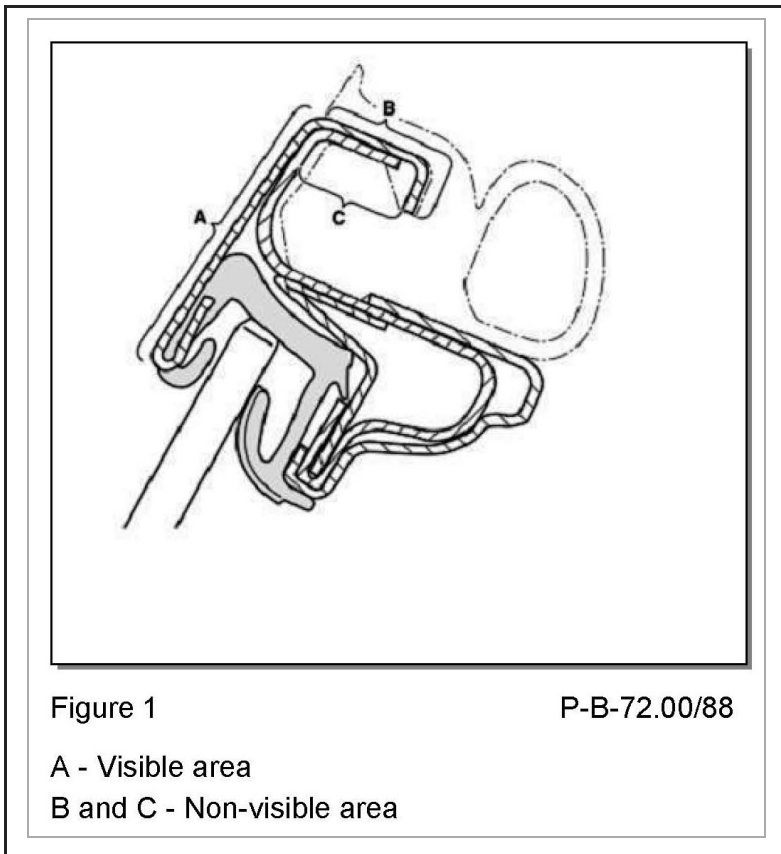
All Model 202, 203 and 210 Vehicles

Corrosion Complaints Concerning Door Frames

If you receive customer reports in the above model vehicles of corrosion in the area of the door **frame**, outside door panel or lower inside of door, follow the procedures below to resolve.

Determining the repair scope

1. In the event of a customer complaint, all the doors must be checked for signs of corrosion.
2. Open the doors to be checked. Detach rubber seal at top and bottom of door. Clean rubber seal.



3. Perform visual inspection for corrosion (Figure 1, A and B). Select remedy according to damage profile.

4. In area Figure 1, C, use mirror to check for corrosion. Select remedy according to damage profile. (Figure 1).

Repair Remedy Overview

1. Corrosion in non-visible area (Figure 1, B and C) under rubber seal, refer to WIS document AR97.00-P-1001F (repair stage 1).
2. Corrosion also in visible area (Figure 1, A) where **paint** can be touched up, refer to WIS document AR97.00-P-1002F (repair stage 2).
3. Corrosion also in visible area where **paint** cannot be touched up on outside door panel near door handle and central trim strip or spot corrosion on lower inside of door, which can be touched up with a brush with no additional painting work, refer to WIS document AR97.00-P-1003F.

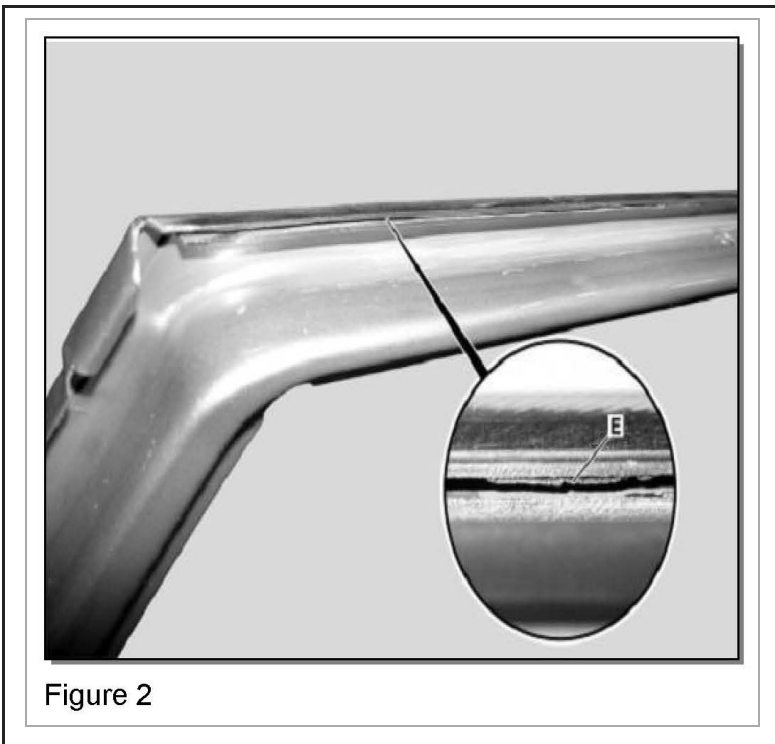




Figure 3

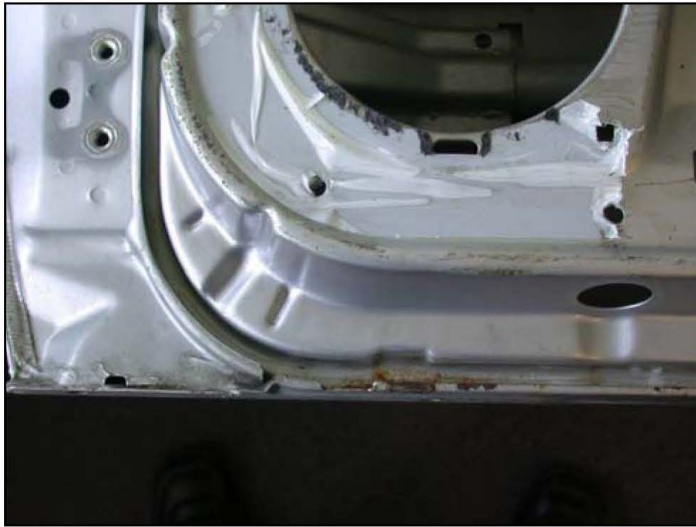


Figure 4

4. Corrosion effects in area (Figure 2, E) after cutting off the fold or in visible area where **paint** cannot be touched up on outside door panel and corrosion on lower inside of door which cannot be touched up with a brush. (Figures 3 & 4), doors must be replaced. Wax inside of door frames and window frames then install rubber seals.

Model 202	AR72.10-P-0500E and AR72.12-P-0600E
Model 203	AR72.10-P-0500P and AR72.10-P-0600P
Model 210	AR72.10-P-0500F and AR72.12-P-0600F

Refer to WIS documents as shown above.

Qty.	Part Name	Part Number
1	Preservation Agent (1 liter)	A000 986 72 70 10

Parts Information

Note: In the case of warranty, please damage code to the failed component. In the event of a sublet repair, please refer to Section 6.25.16 of the Warranty Policies and Procedures manual.