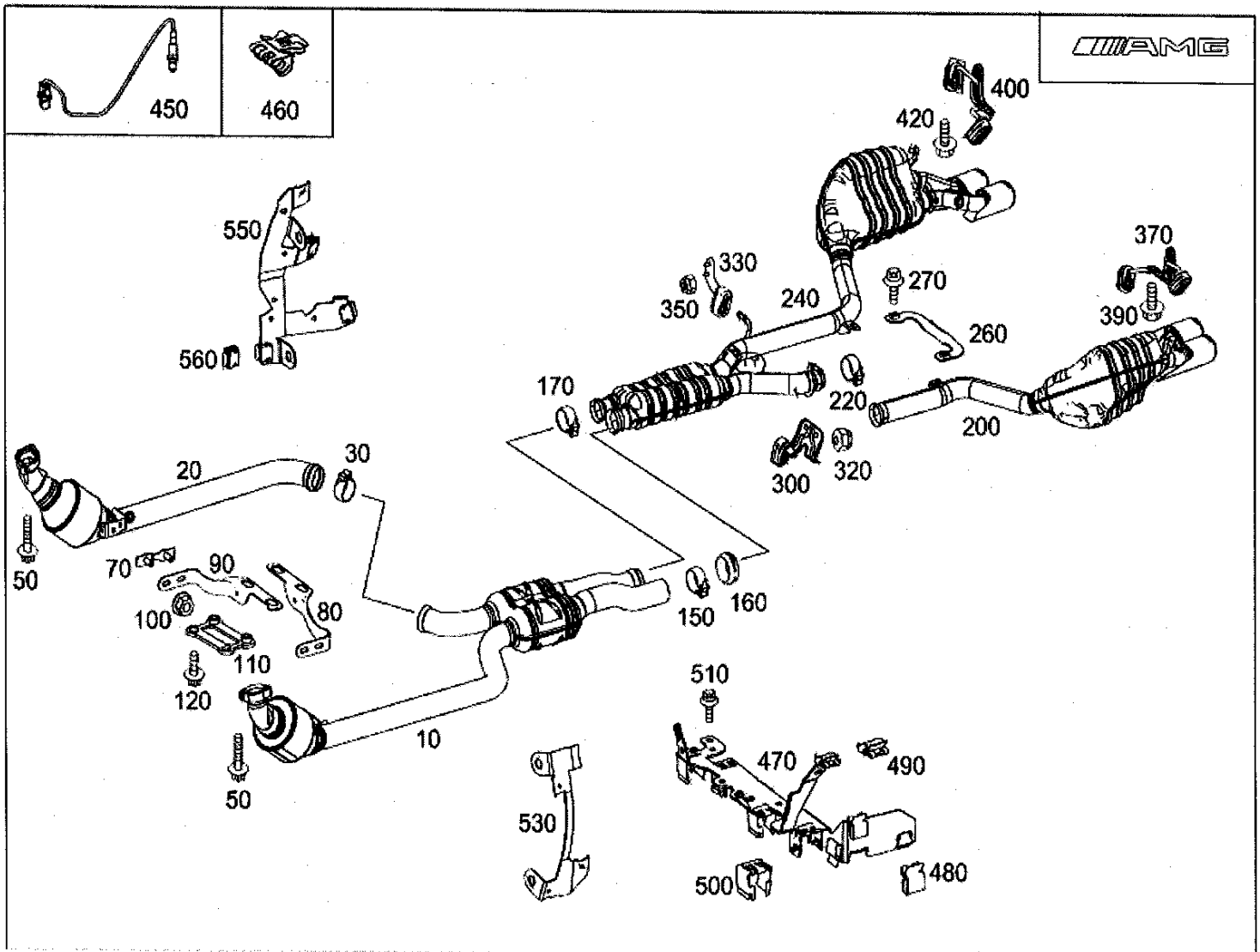


- Picture -

Mode : MD mode Mod. des. overview : C SEDAN
FIN/MD : WDD 2040771F428245 Catalog : 62P
VIN : Major assembly :
Sales designation : C 63 AMG Major assembly MD :
Assortment class : Car Group : 49 - EXHAUST SYSTEM
Market : Standard Subgroup : 212 - EXHAUST SYSTEM USED ON EIGHT-CYLINDER GASOLINE VEHICLES
Picture number : B49212000142.100428



- Parts list -

Mode : MD mode Mod. des. overview : C SEDAN
 FIN/MD : WDD 2040771F428245 Catalog : 62P
 VIN : Major assembly :
 Sales designation : C 63 AMG Major assembly MD :
 Assortment class : Car Group : 49 - EXHAUST SYSTEM
 Market : Standard Subgroup : 212 - EXHAUST SYSTEM USED ON EIGHT-CYLINDER GASOLINE VEHICLES

Item no.	Designation/description	Quantity	Version
10	EXHAUST PIPE LEFT Code: 800	001	
20	EXHAUST PIPE RIGHT Code: 800	001	
30	CLAMP EXHAUST PIPE RIGHT TO EXHAUST PIPE LEFT 76 MM	001	
50	BOLT FRONT EXHAUST PIPE TO EXHAUST MANIFOLD M8X55	004	
70	BASE PLATE BRACKET TO FRONT EXHAUST PIPE	002	
80	BRACKET LEFT	001	
90	BRACKET RIGHT	001	
100	HEX NUT FRONT EXHAUST PIPE TO BRACKET	004	
110	MOUNTING PLATE FRONT EXHAUST PIPE TO TRANSMISSION	001	
120	HEXAGON HEAD BOLT BRACKET TO TRANSMISSION M8X35	002	
150	CLAMP FRONT EXHAUST PIPE TO REAR EXH. PIPE (SLIP FIT) 81,5 MM	001	
160	SEAL RING FRONT EXHAUST PIPE TO REAR EXH. PIPE (SLIP FIT)	001	
170	CLAMP FRONT EXHAUST PIPE TO REAR EXH. PIPE (FIXED) 76 MM	001	
200	EXHAUST PIPE REAR LEFT	001	
220	CLAMP FROM RIGHT EXHAUST MUFFLER TO LEFT EXHAUST MUFFLER 76 MM	001	
240	EXHAUST PIPE REAR RIGHT	001	
260	STRUT BETWEEN RIGHT AND LEFT EXHAUST MUFFLERS	001	
270	HEXALOBULAR BOLT STRUT TO EXHAUST PIPE M8X16	002	
300	SUSPENSION EXHAUST PIPE, REAR, AT REAR AXLE,LEFT	001	

320	NUT	002
	BRACKET TO REAR AXLE M8	
330	SUSPENSION	001
	EXHAUST PIPE, REAR, AT REAR AXLE,RIGHT	
350	NUT	002
	BRACKET TO REAR AXLE M8	
370	SUSPENSION	001
	EXHAUST PIPE, REAR, LEFT, TO BODY	
390	HEXALOBULAR BOLT	001
	BRACKET TO BODY M8X16	
400	SUSPENSION	001
	EXHAUST PIPE, REAR, RIGHT, TOBODY	
420	HEXALOBULAR BOLT	001
	BRACKET TO BODY M8X16	
450	OXYGEN SENSOR	001
	LEFT CONTROL PROBE IN FRONT OF CATALYST	
450	OXYGEN SENSOR	001
	RIGHT CONTROL PROBE IN FRONT OF CATALYST	
450	OXYGEN SENSOR	001
	LEFT DIAGNOSIS PROBE BEHIND CATALYST	
450	OXYGEN SENSOR	001
	RIGHT DIAGNOSIS PROBE BEHIND CATALYST	
460	CLIP	002
	OXYGEN SENSOR LEAD MOUNTING 18.0X18.5 MM	
470	BRACKET	001
	AT LOWER TRANSMISSION HOUSING	
480	RETAINING CLAMP	001
	AT REAR LEFT BRACKET 18 X 19 MM	
490	BRACKET	003
	AT FRONT LEFT BRACKET	
500	SPRING CLAMP	002
	FOR SENSOR CONNECTOR 28 X 24 MM	
500	SPRING CLAMP	002
	FOR 4-PIN SENSOR	
510	HEXALOBULAR BOLT	001
	BRACKET TO TRANSMISSION CASE,RIGHT M8X15	
550	BRACKET	001
	TO TRANSMISSION BELL RIGHT	
560	RETAINING CLAMP	003
	AT BRACKET 18 X 19 MM	