

Brembo S.p.A.
Via Brembo 25
24035 Curno (BG) - Italy
Tel.: +39 035 605 1111
Fax: +39 035 605 2766
E-mail: HighPerformance@brembo.it
www.brembo.com



Distributed by

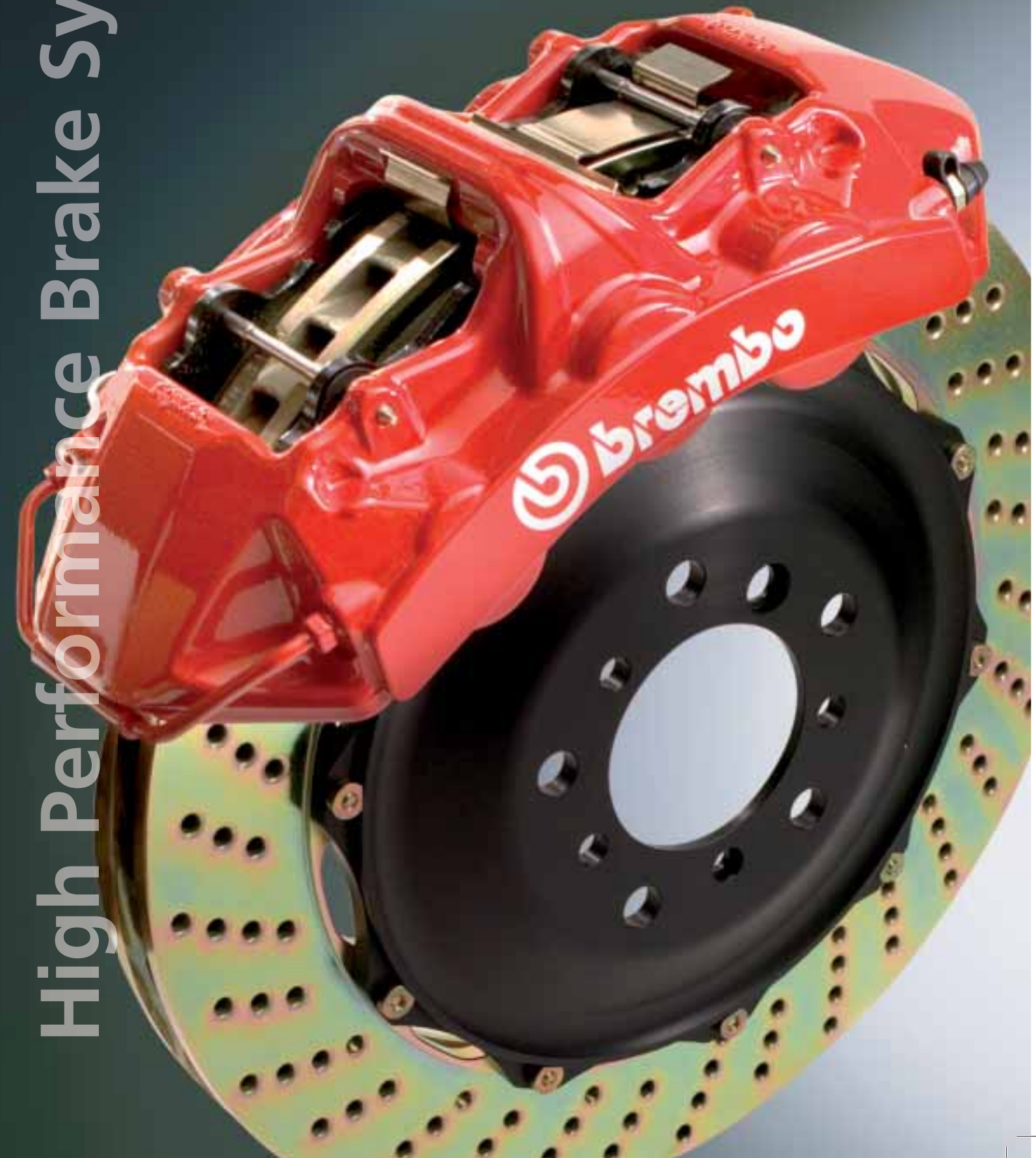


High Performance Brake Systems



Gran Turismo
Technical information

Release N. 02/2008



INDEX

page 3

Part Number Reading Key

Technical Information

page 4

■ discs

page 38

■ calipers

page 42

■ pads

page 46

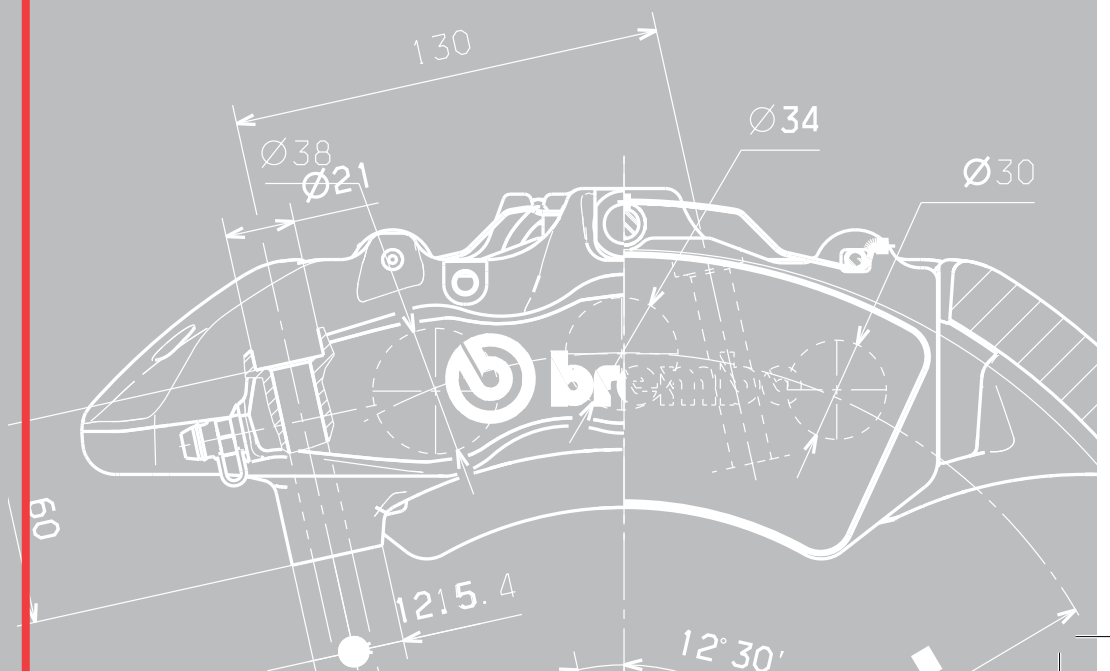
■ bushing

page 47

■ brake fluid

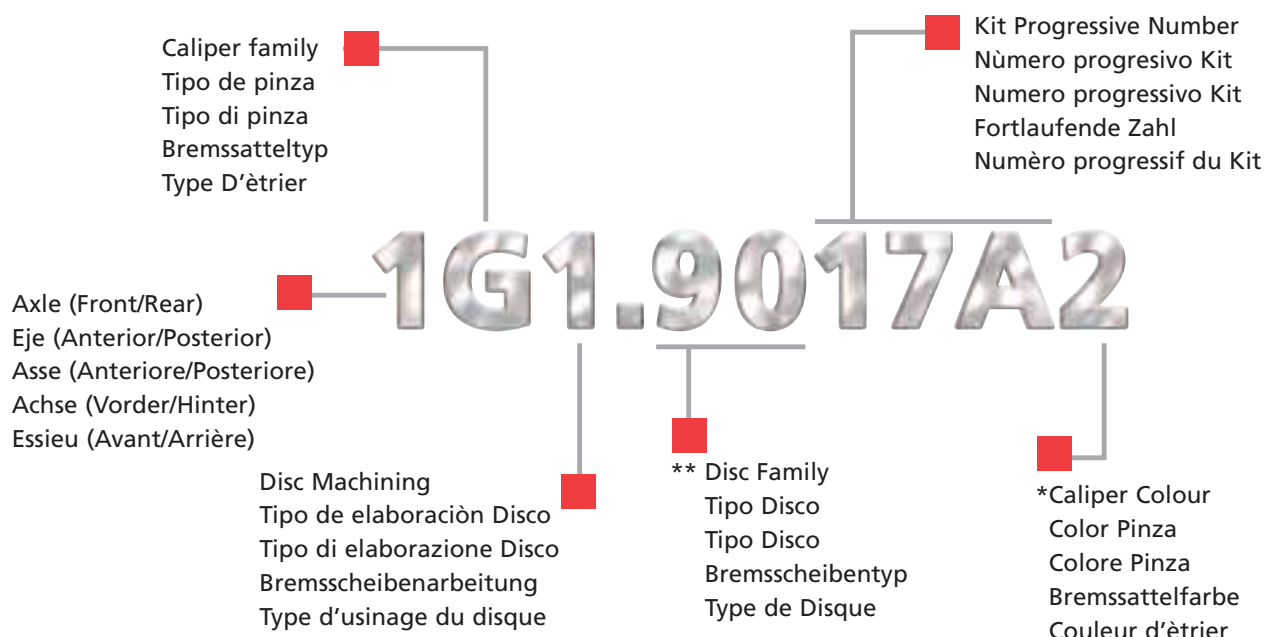
page 49

Caliper Clearance Guide



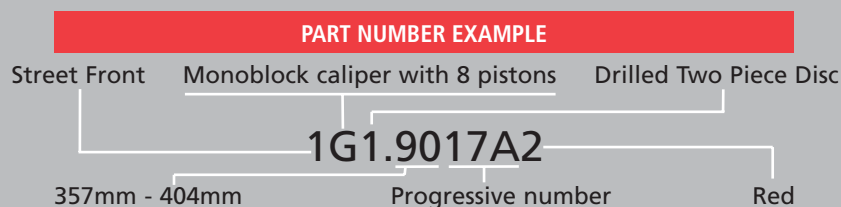


Part Number Reading Key



AXLE	
1	Street Front
2	Street Rear
CALIPER FAMILY	
A/1	2-piece caliper with 4 pistons
B/2	2-piece caliper with 4 pistons
C	2-piece caliper with 4 pistons
D	Hand brake
E	Lug mounting caliper
F	2-piece caliper with 4 pistons
G	Monoblock caliper with 8 pistons
H	2-piece caliper with 4 pistons
J	2-piece caliper with 6 pistons
M	Monoblock caliper with 6 pistons
N	Monoblock caliper with 6 pistons
P	Monoblock caliper with 4 pistons
DISC MACHINING	
0	No Disc
1	Drilled 2-piece disc
2	Slotted 2-piece disc
4	Drilled 1-piece disc
5	Slotted 1-piece disc
DISC FAMILY **	
10	0mm - 254mm
20	255mm - 279mm
30	280mm - 292mm
40	293mm - 304mm
50	305mm - 317mm
60	318mm - 330mm
70	331mm - 342mm
80	343mm - 356mm
90	357mm - 404mm
95	405mm and Greater
CALIPER COLOUR*	
1	Black
2	Red
3	Silver
4	Gold
5	Yellow

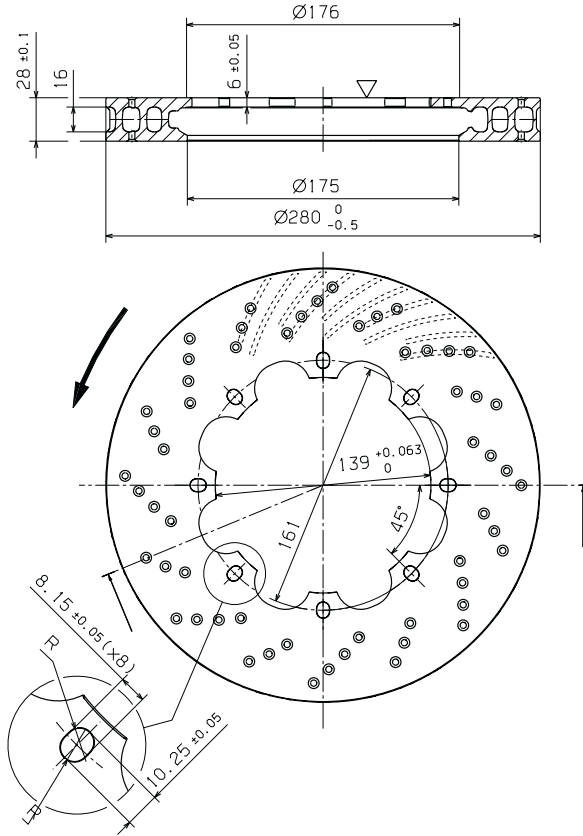
PART NUMBER EXAMPLE 1G1.9017A2	
1	Street Front
G	Monoblock caliper with 8 pistons
1	Drilled Two Piece Disc
90	357mm - 404mm
17A	Kit Progressive Number
2	Red



*Please refer to your dealer for colour availability.

**For information regarding disc part number refer to spare part section.

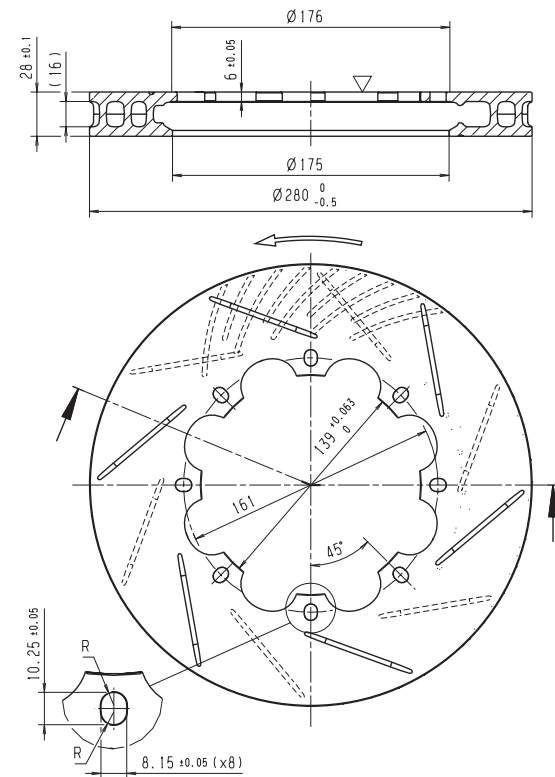
Family 30 - Size 280 mm - Part No. XA3.39.03/06



XA3.39.03 AS SHOWN
XA3.39.06 SYMMETRICALLY OPPOSITE

▽ MOUNTING FACE
WEIGHT 4.6 kg

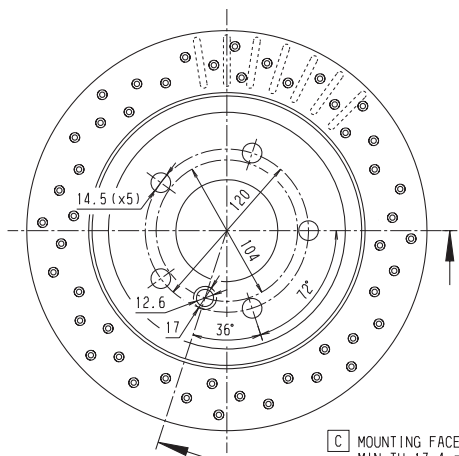
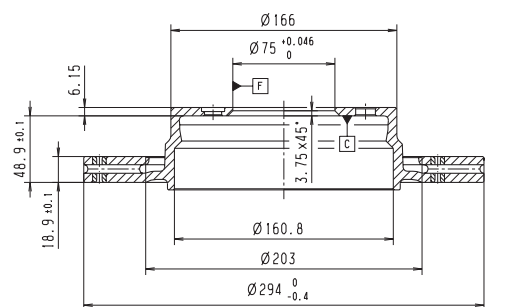
Family 30 - Size 280 mm - Part No. 09.8647.10/20



09.8647.10 AS SHOWN
09.8647.20 SYMMETRICALLY OPPOSITE

▽ MOUNTING FACE
WEIGHT 4.5 kg

Family 40 - Size 294 mm - Part No. 09.7702.95

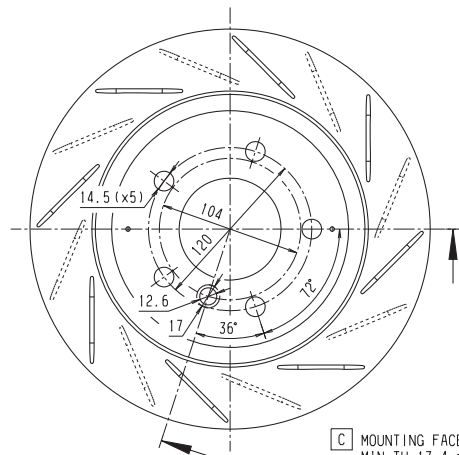
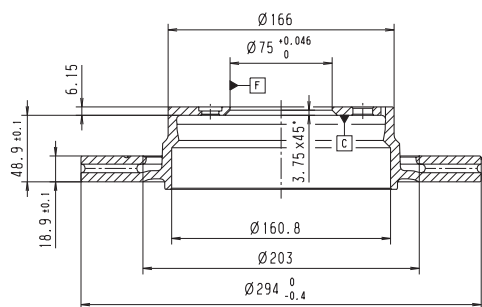


Type DA

C MOUNTING FACE
MIN TH 17.4 mm
WEIGHT 5.9 kg



Family 40 - Size 294 mm - Part No. 09.7702.51/61



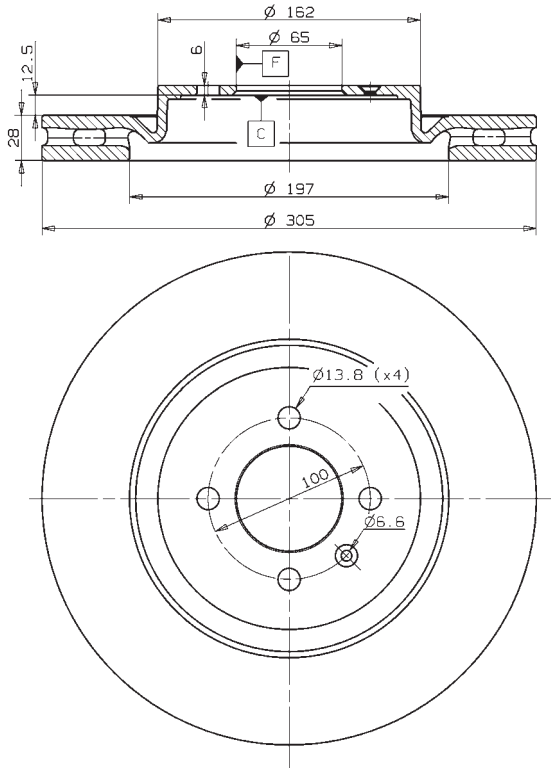
Type DA

C MOUNTING FACE
MIN TH 17.4 mm
WEIGHT 5.9 kg

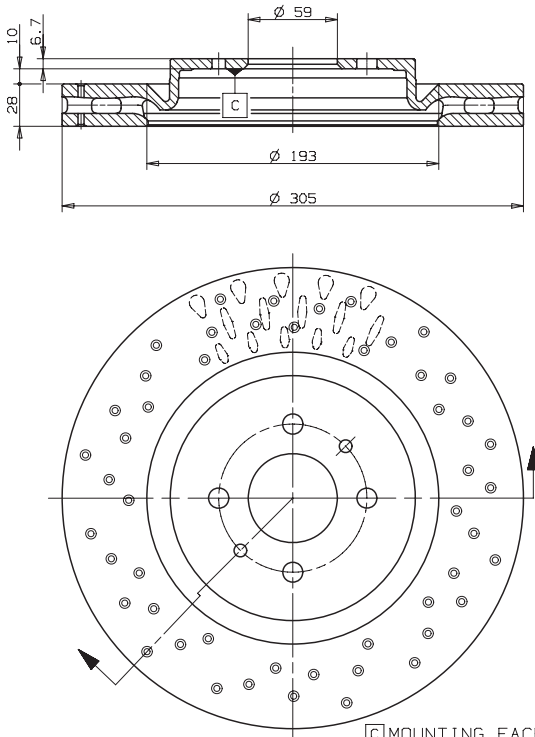


DISCS

Family 50 - Size 305 mm - Part No. 01.6843.99



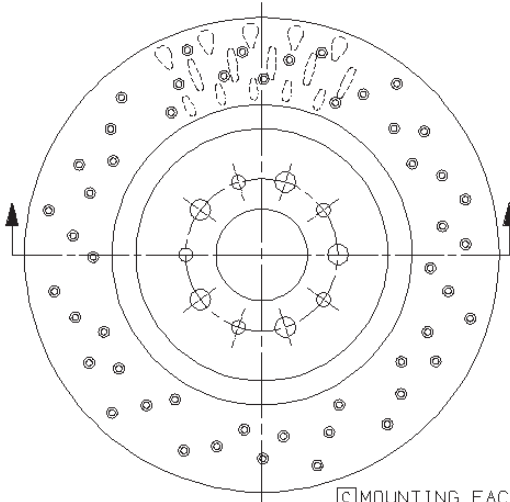
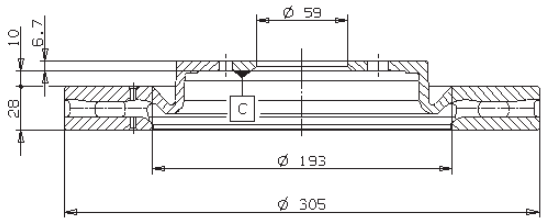
Family 50 - Size 305 mm - Part No. 09.6843.95



INTERCHANGEABLE WITH
09.6843.10

□ MOUNTING FACE
Min. TH 26 mm
Weight 8 Kg

Family 50 - Size 305 mm - Part No. 09.6843.96

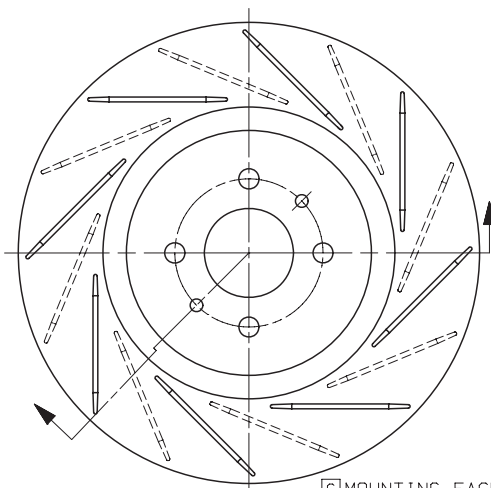
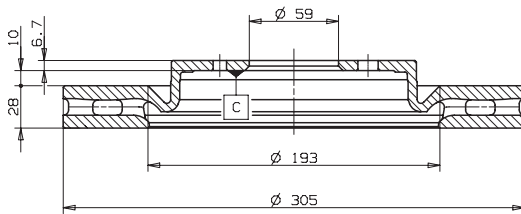


INTERCHANGEABLE WITH
09.6843.20

C MOUNTING FACE
Min. TH 26 mm
Weight 8 Kg



Family 50 - Size 305 mm - Part No. 09.6843.51/61



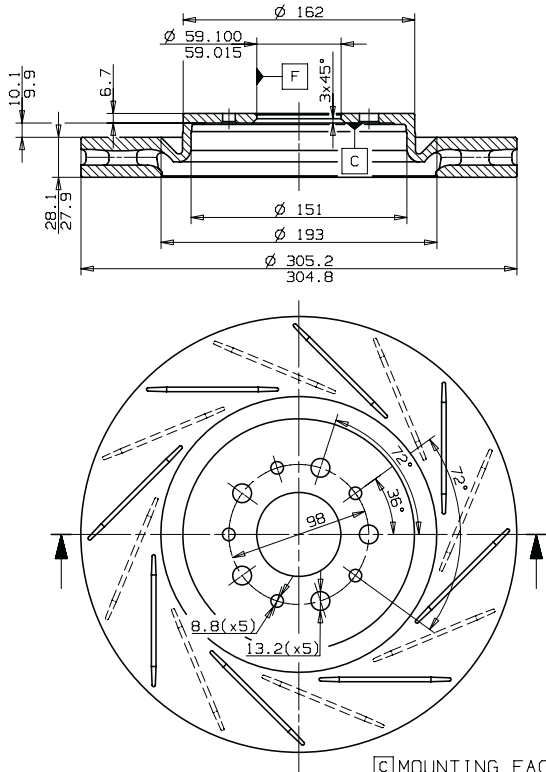
INTERCHANGEABLE WITH
09.6843.10

C MOUNTING FACE
Min. TH 26 mm
Weight 8 Kg



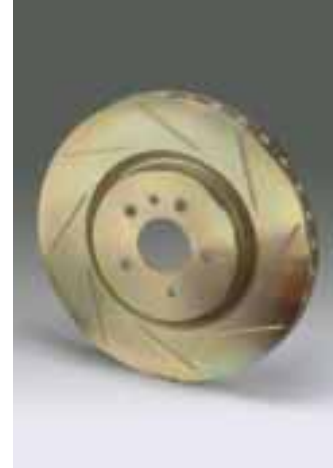
DISCS

Family 50 - Size 305 mm - Part No. 09.6843.52/62

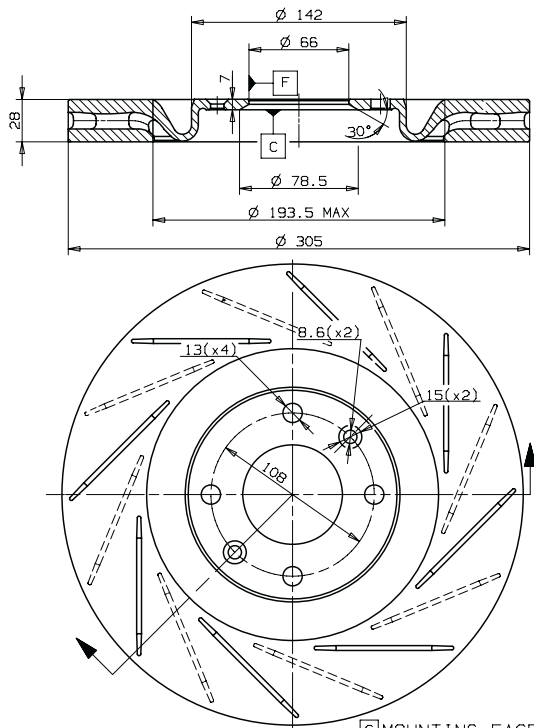


Type DA

☐ MOUNTING FACE
Min. TH 26 mm
Weight 8.2 Kg

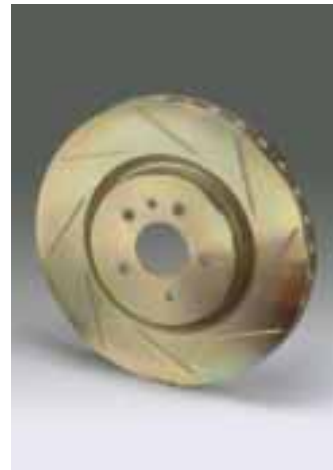


Family 50 - Size 305 mm - Part No. 09.7398.51/61

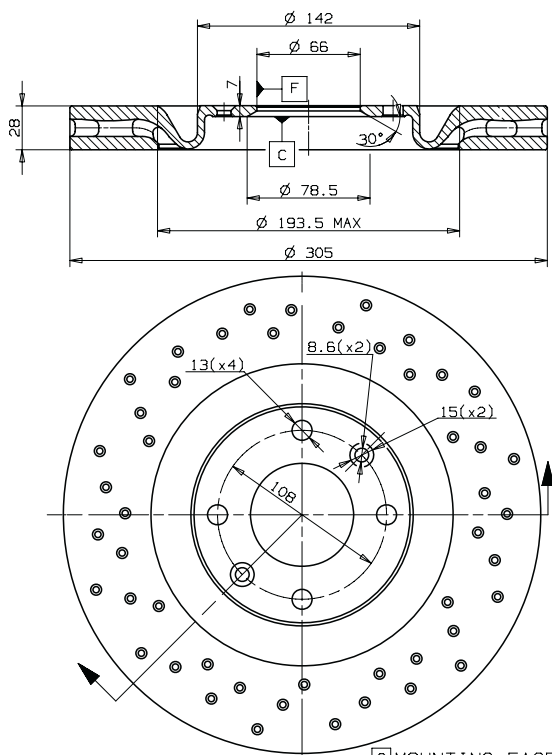


INTERCHANGEABLE WITH
09.7398.10

☐ MOUNTING FACE
Min. TH 26 mm
Weight 7.9 Kg



Family 50 - Size 305 mm - Part No. 09.7398.95

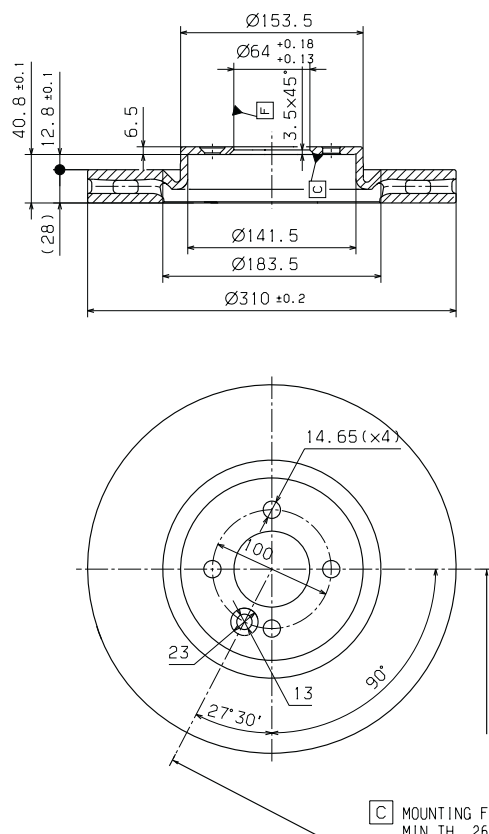


INTERCHANGEABLE WITH
09.7398.10

C MOUNTING FACE
Min. TH 26 mm
Weight 7.9 Kg



Family 50 - Size 310 mm - Part No. XPO.14.50



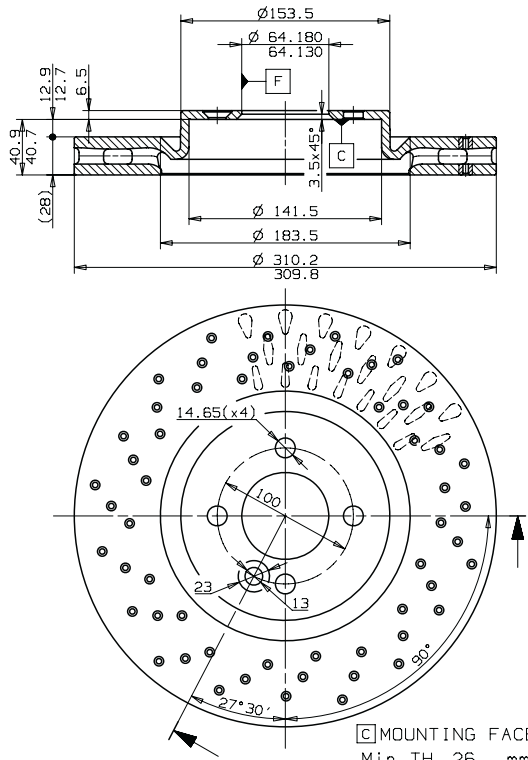
Type DA

C MOUNTING FACE
MIN TH 26 mm
WEIGHT 8.6 kg



DISCS

Family 50 - Size 310 mm - Part No. XPO.14.55

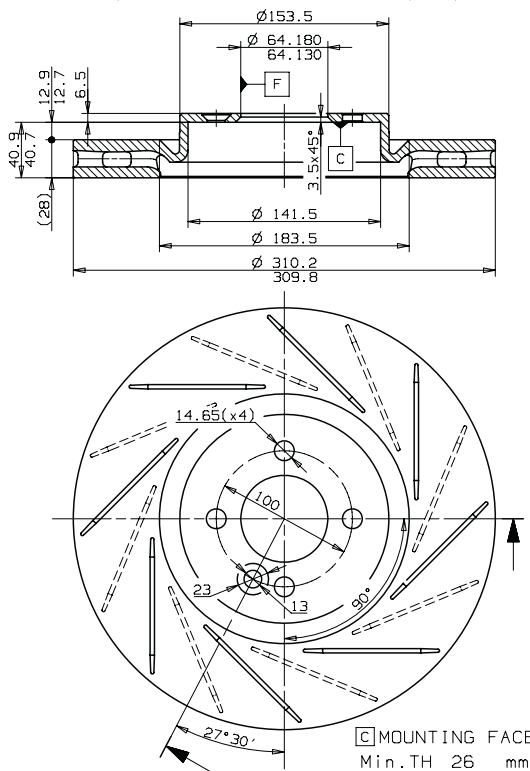


Type DA

C MOUNTING FACE
 Min.TH 26 mm
 Weight 8.6 Kg

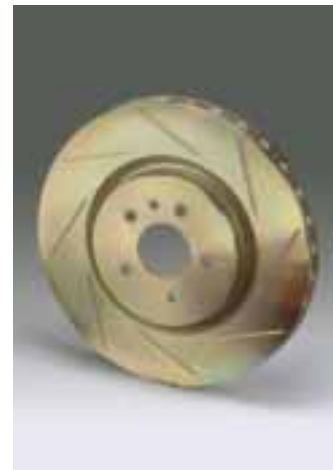


Family 50 - Size 310 mm - Part No. XPO.14.51/61

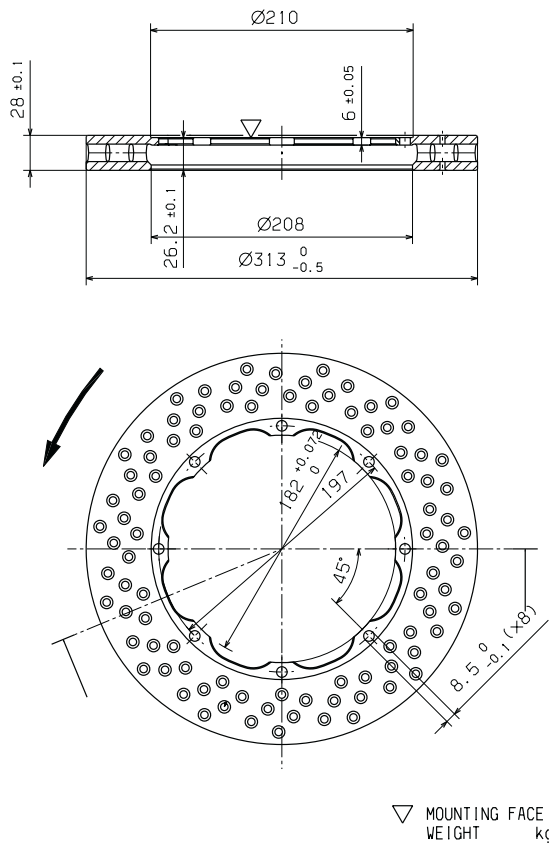


Type DA

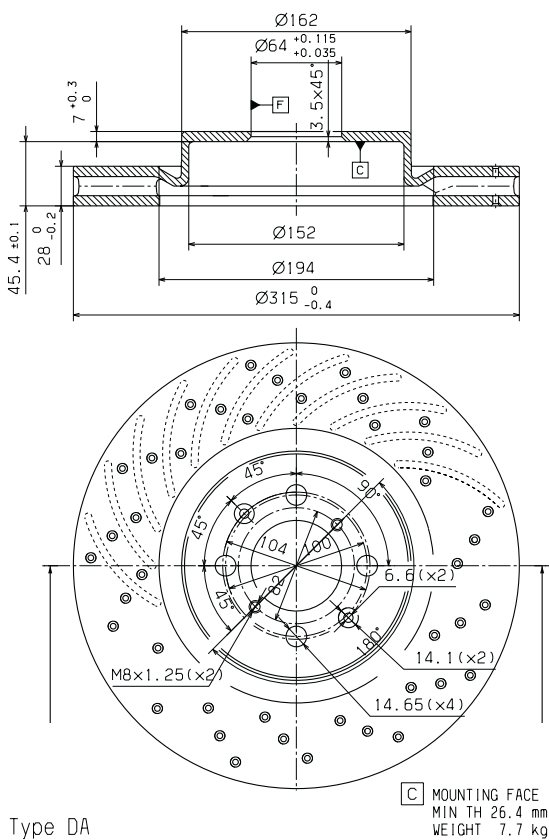
C MOUNTING FACE
 Min.TH 26 mm
 Weight 8.6 Kg



Family 50 - Size 313 mm - Part No. XA5.83.10/20

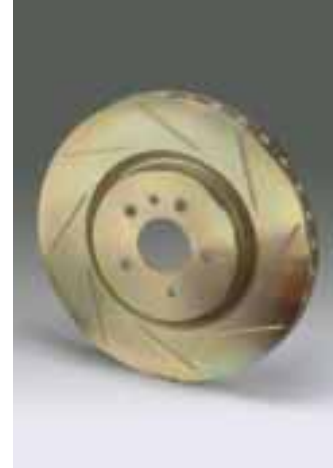
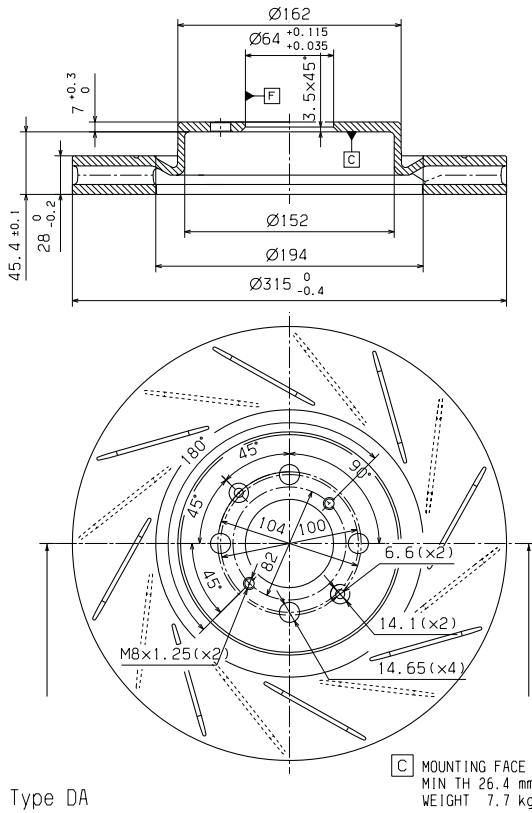


Family 50 - Size 315 mm - Part No. 90.6021

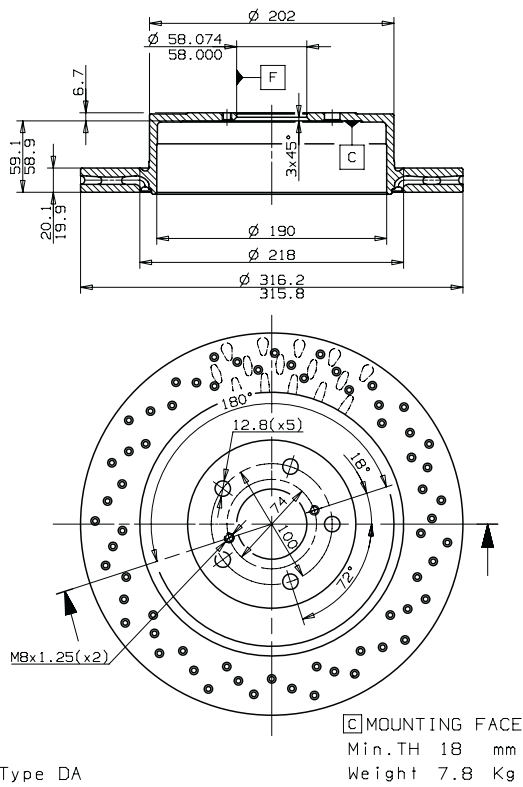


DISCS

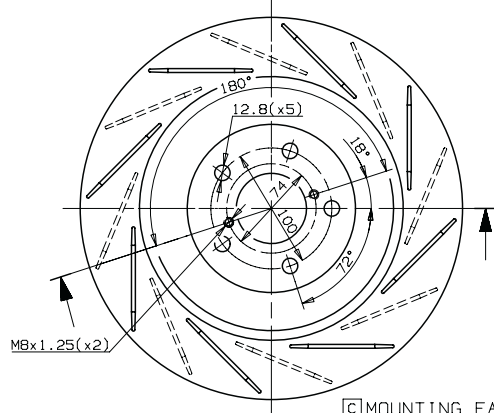
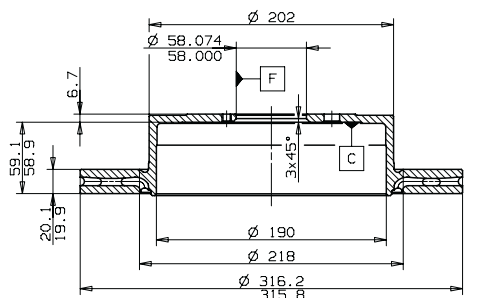
Family 50 - Size 315 mm - Part No. 90.6023



Family 50 - Size 316 mm - Part No. 19.7813.95

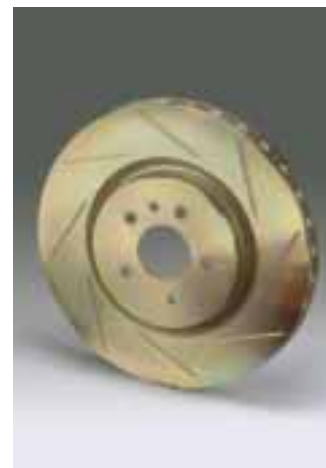


Family 50 - Size 316 mm - Part No. 19.7813.51/61

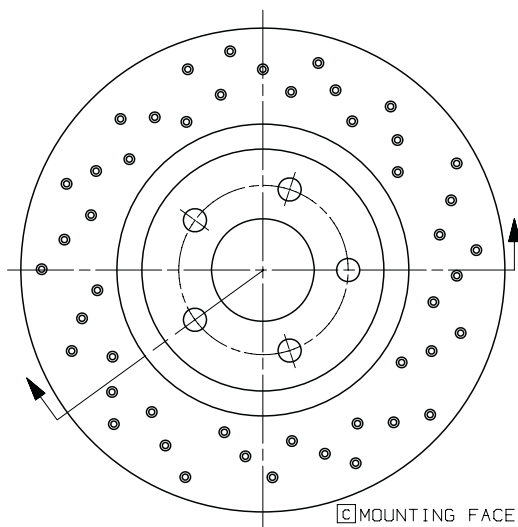
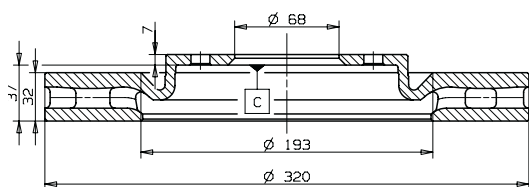


C MOUNTING FACE
 Min. TH 18 mm
 Weight 7.8 Kg

Type DA



Family 60 - Size 320 mm - Part No. XPO.14.05

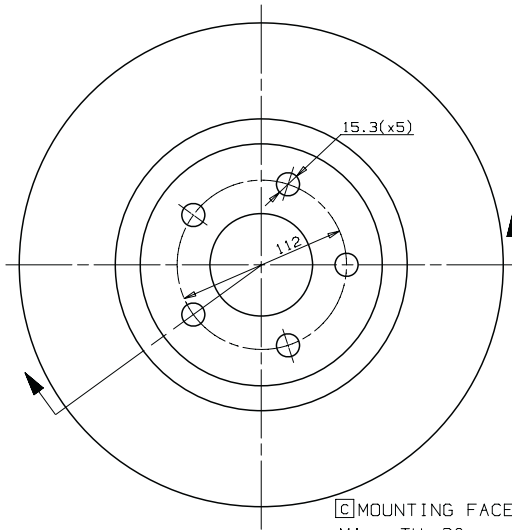
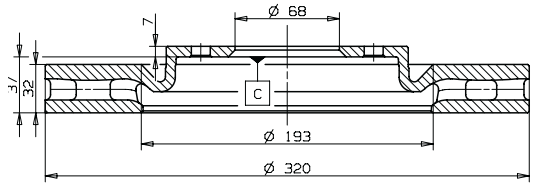


C MOUNTING FACE
 Min. TH 30 mm
 Weight 9.6 Kg



DISCS

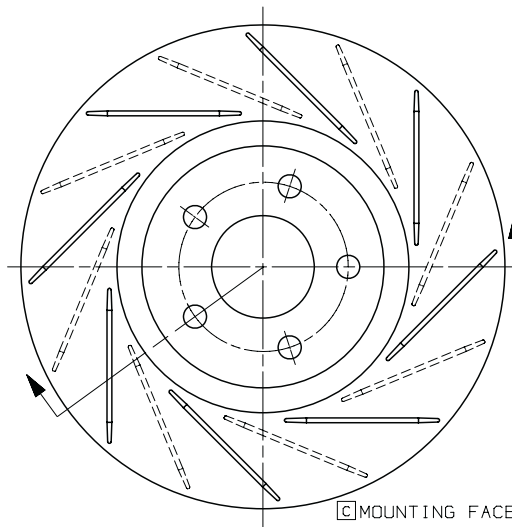
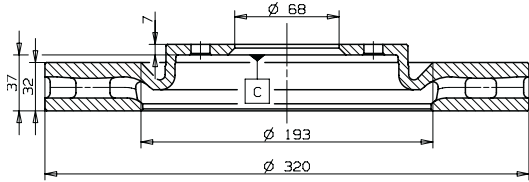
Family 60 - Size 320 mm - Part No. XPO.14.02



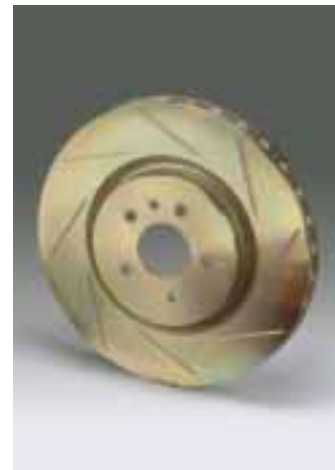
C MOUNTING FACE
 Min. TH 30 mm
 Weight 9.7 Kg



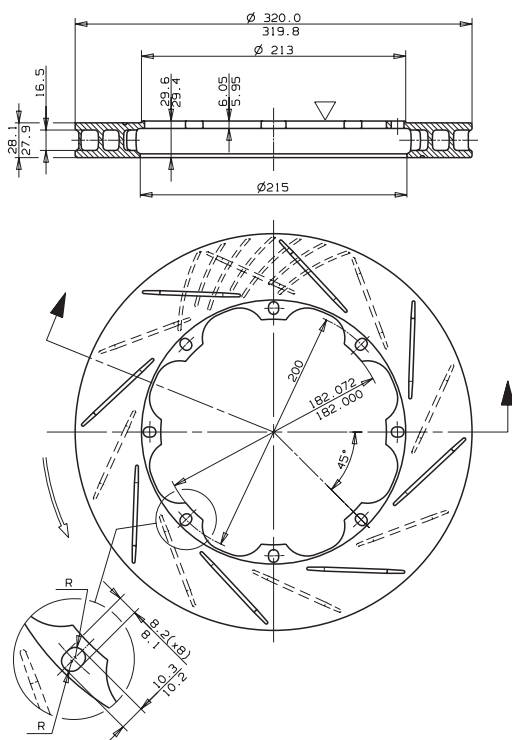
Family 60 - Size 320 mm - Part No. XPO.14.10.11



C MOUNTING FACE
 Min. TH 30 mm
 Weight 9.6 Kg



Family 60 - Size 320 mm - Part No. 09.5682.50/60

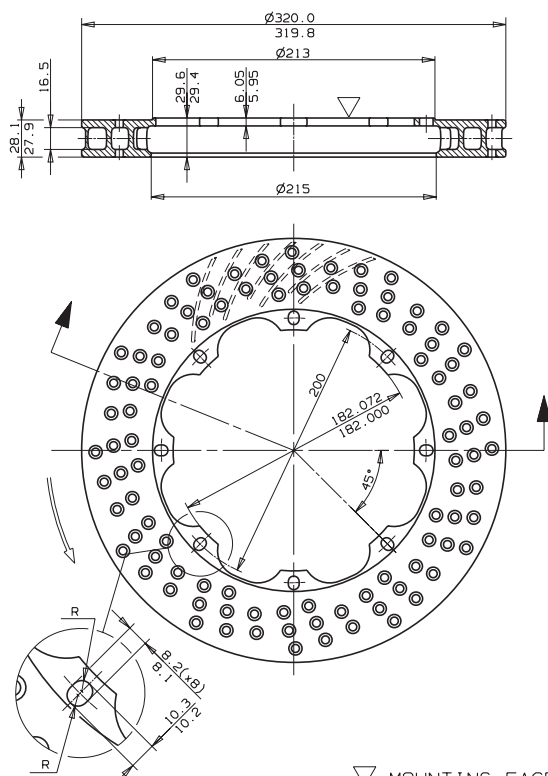


09.5682.50 AS SHOWN
 09.5682.60 SYMMETRICALLY OPPOSITE

▽ MOUNTING FACE
 WEIGHT~5.2 Kg



Family 60 - Size 320 mm - Part No. 09.5682.55/65



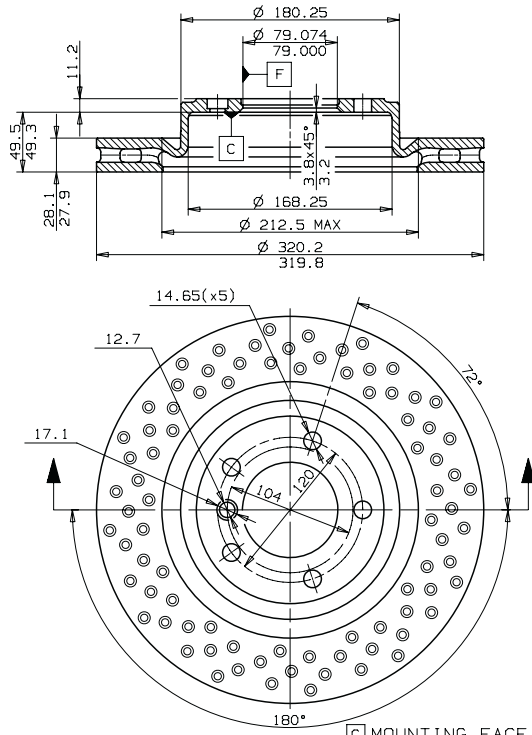
R 09.5682.55 AS SHOWN
 R 09.5682.65 SYMMETRICALLY OPPOSITE

▽ MOUNTING FACE
 ◎ MIN TH 27 mm
 WEIGHT~5.0 Kg



DISCS

Family 60 - Size 320 mm - Part No. 09.5585.20

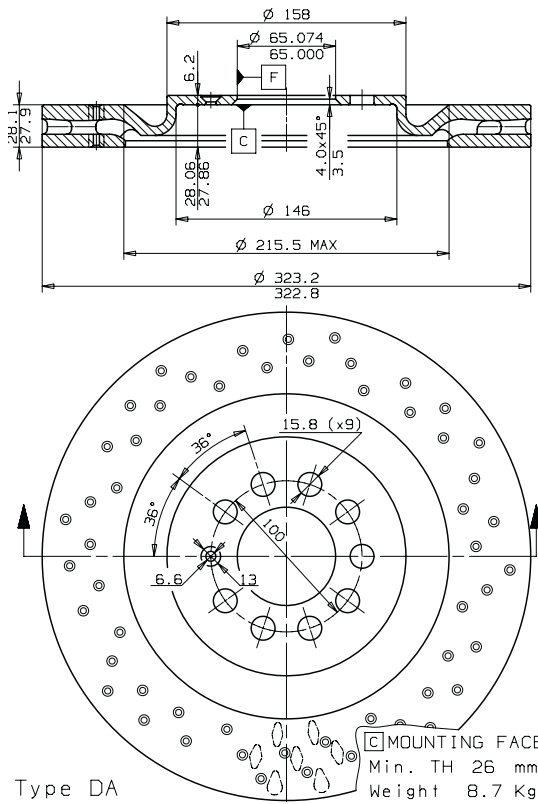


Type DA

□ MOUNTING FACE
Min. TH 26.4 mm
Weight 9.3 Kg



Family 60 - Size 323 mm - Part No. 19.8403.20

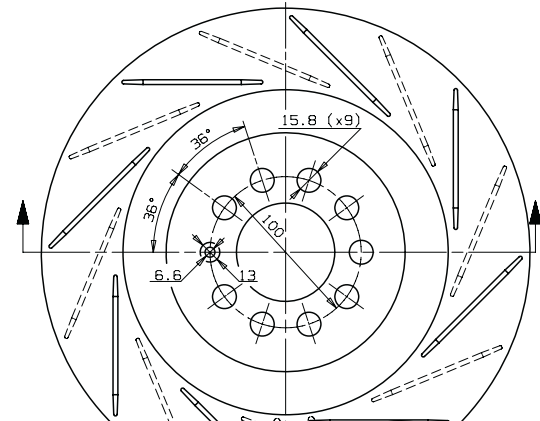
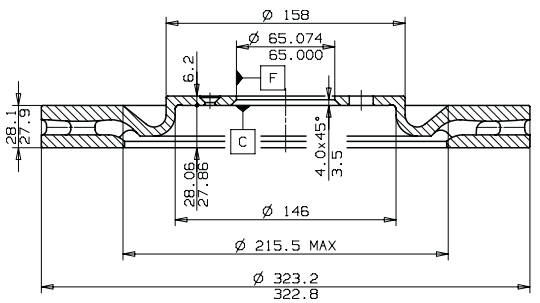


Type DA

□ MOUNTING FACE
Min. TH 26 mm
Weight 8.7 Kg

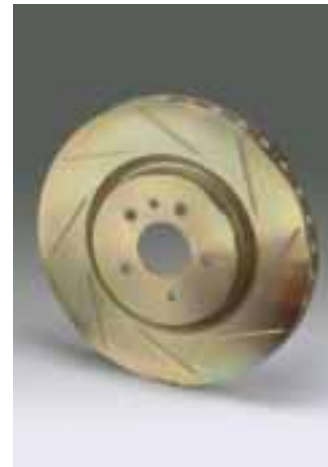


Family 60 - Size 323 mm - Part No. 19.8403.30

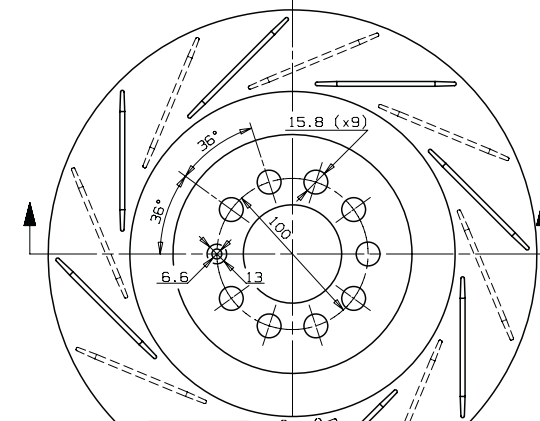
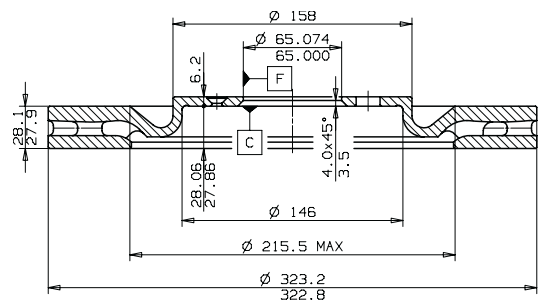


LH brake disc
Type DA

C MOUNTING FACE
 Min. TH 26 mm
 Weight 8.8 Kg



Family 60 - Size 323 mm - Part No. 19.8403.40



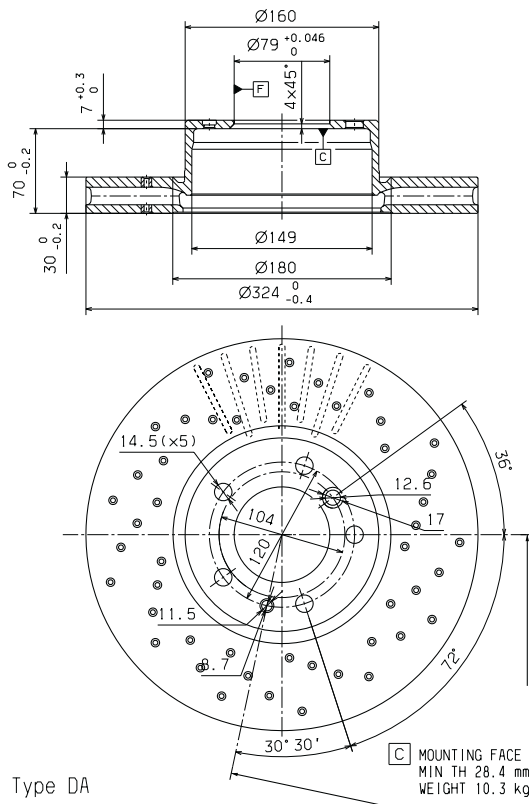
RH brake disc
Type DA

C MOUNTING FACE
 Min. TH 26 mm
 Weight 8.8 Kg

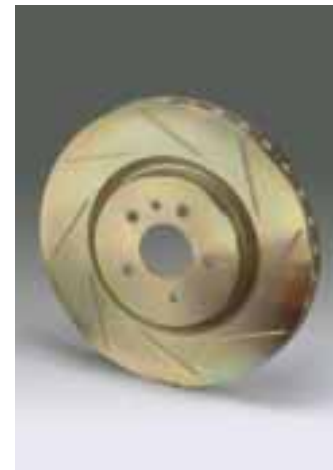
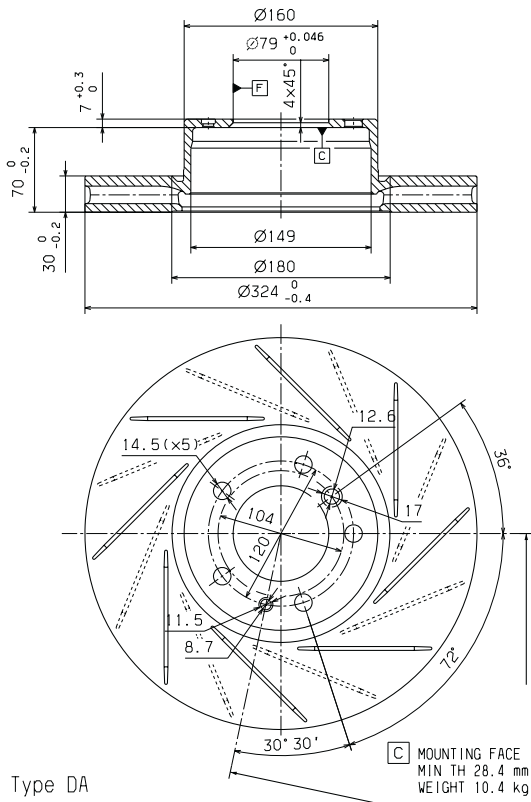


DISCS

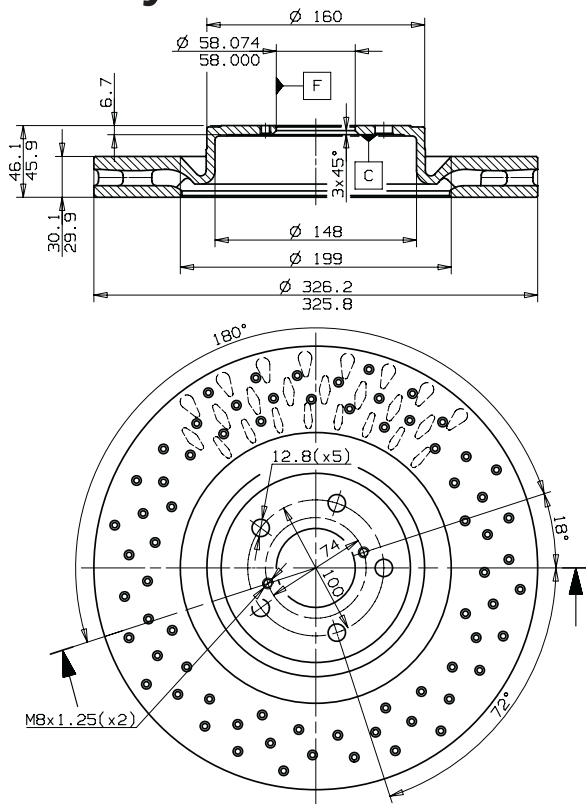
Family 60 - Size 324 mm - Part No. 09.5579.95



Family 60 - Size 324 mm - Part No. 09.5579.51/61



Family 60 - Size 326 mm - Part No. 19.7812.95

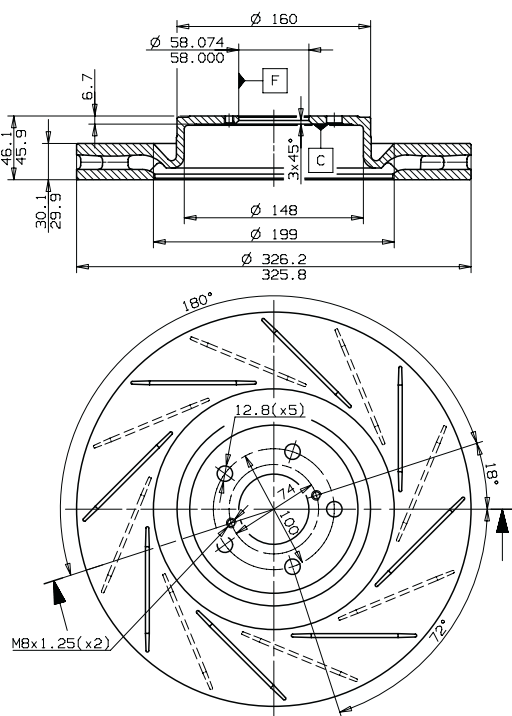


Type DA

□ MOUNTING FACE
Min.TH 28 mm
Weight 10.1 Kg



Family 60 - Size 326 mm - Part No. 19.7812.51/61



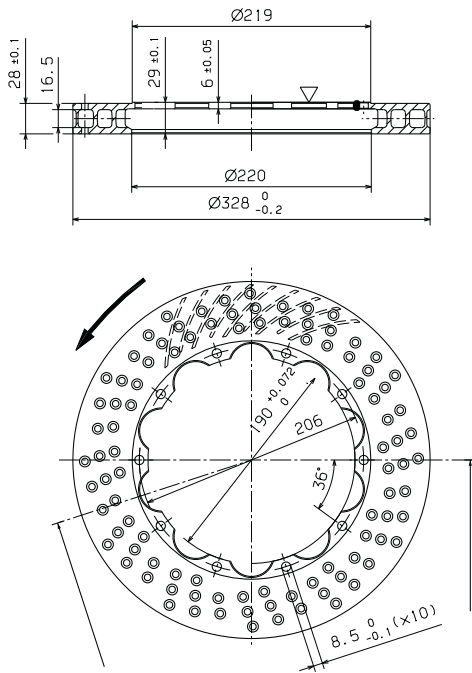
Type DA

□ MOUNTING FACE
Min.TH 28 mm
Weight 10.1 Kg



DISCS

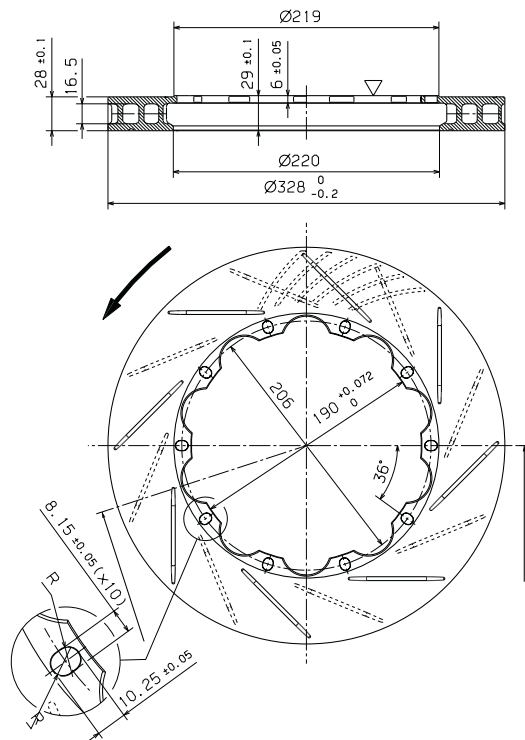
Family 60 - Size 328 mm - Part No. 09.5682.15/25



09.5682.15 AS SHOWN
09.5682.25 SYMMETRICALLY OPPOSITE

▽ MOUNTING FACE
WEIGHT 5.1 kg

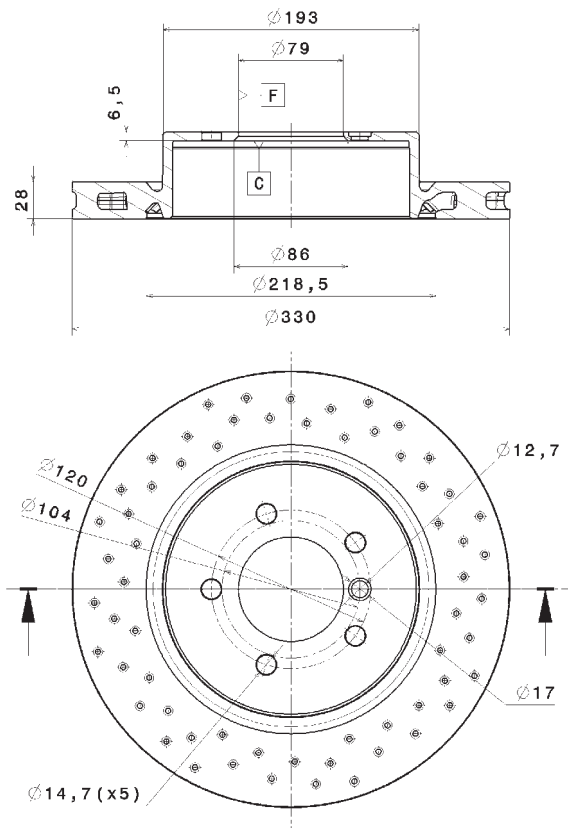
Family 60 - Size 328 mm - Part No. 09.5682.94/95



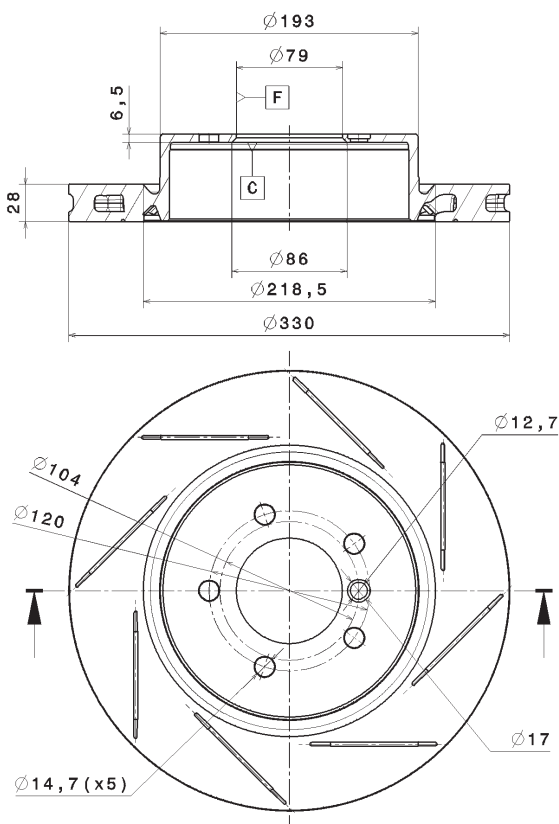
09.5682.94 AS SHOWN
09.5682.95 SYMMETRICALLY OPPOSITE

▽ MOUNTING FACE
WEIGHT 5.3 kg

Family 60 - Size 330 mm - Part No. XPO.14.A3

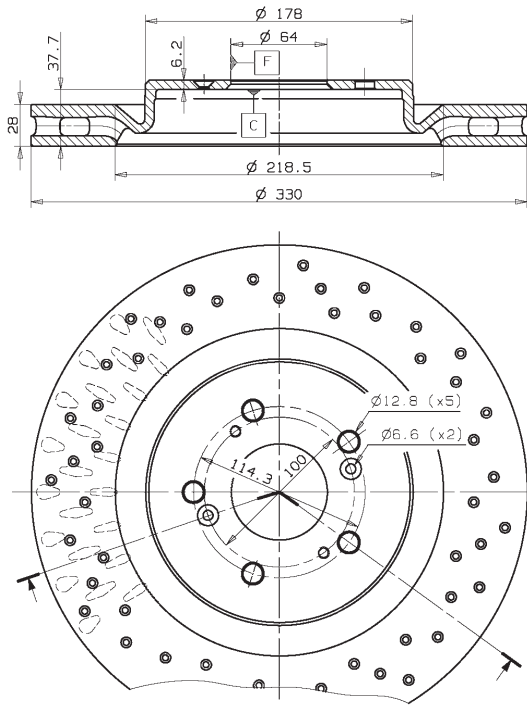


Family 60 - Size 330 mm - Part No. XPO.14.A4/A5

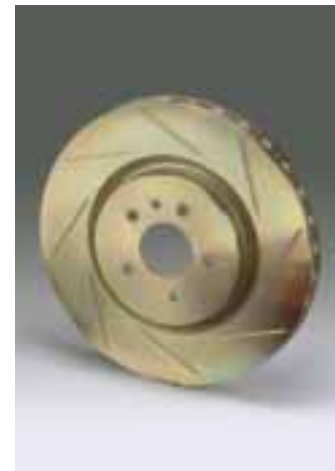
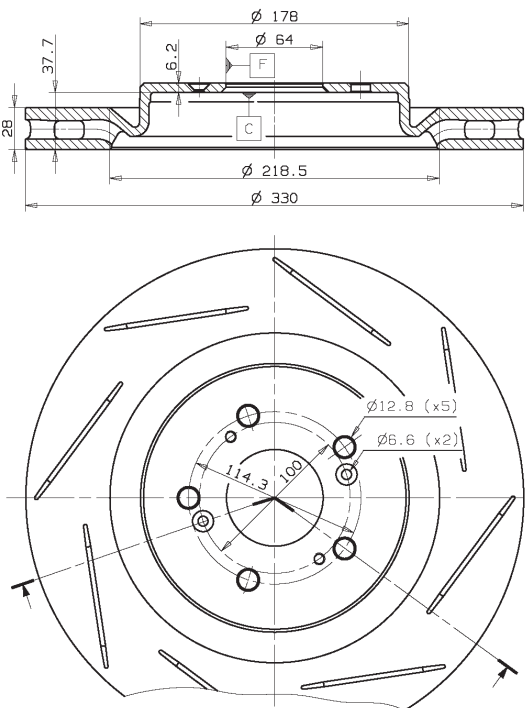


DISCS

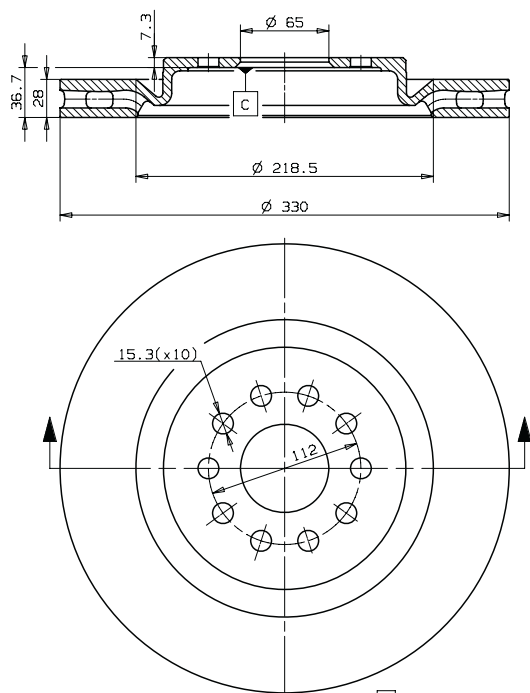
Family 60 - Size 330 mm - Part No. XPO.14.43



Family 60 - Size 330 mm - Part No. XPO.14.47/48



Family 60 - Size 330 mm - Part No. XPO.14.90

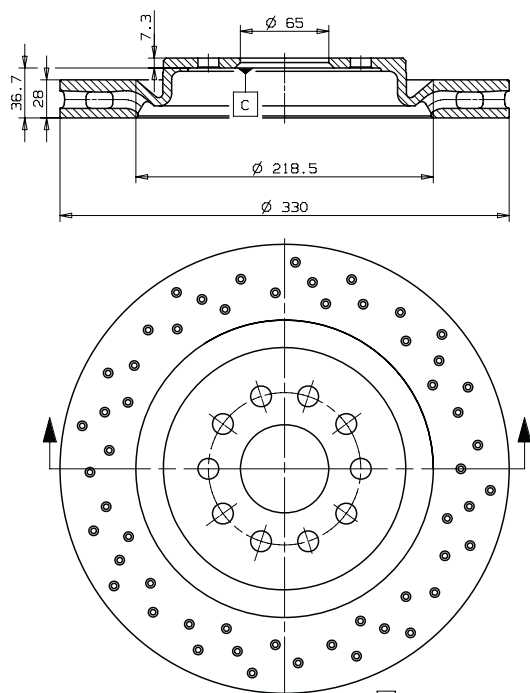


Type DA

C MOUNTING FACE
 Min. TH 26.4 mm
 Weight 8.7 Kg



Family 60 - Size 330 mm - Part No. XPO.14.95



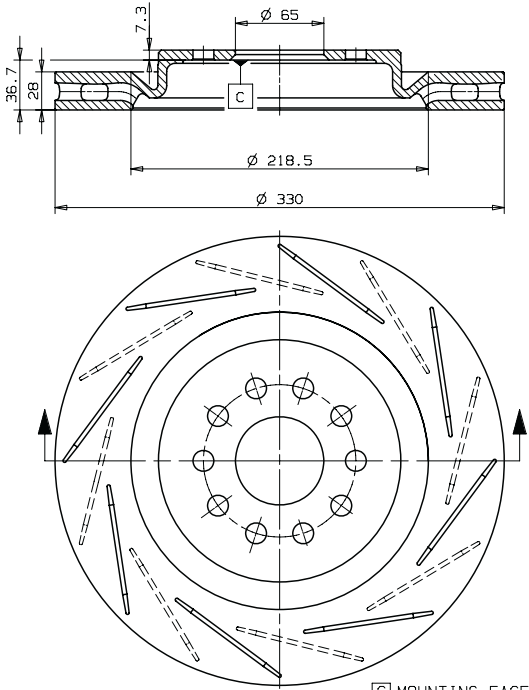
Type DA

C MOUNTING FACE
 Min. TH 26.4 mm
 Weight 8.5 Kg



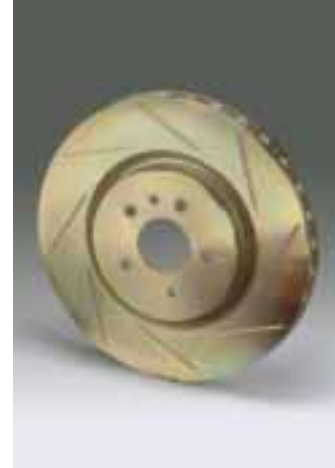
DISCS

Family 60 - Size 330 mm - Part No. XPO.14.91/A1

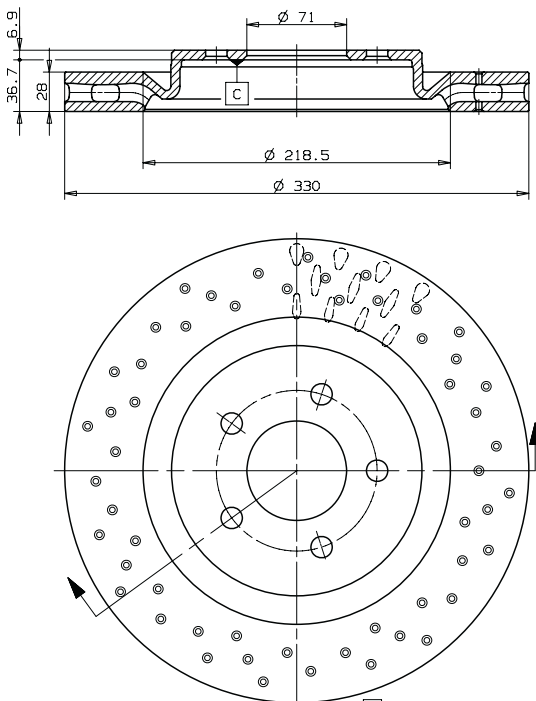


Type DA

C MOUNTING FACE
 Min. TH 26.4 mm
 Weight 8.5 Kg



Family 60 - Size 330 mm - Part No. 09.7267.96

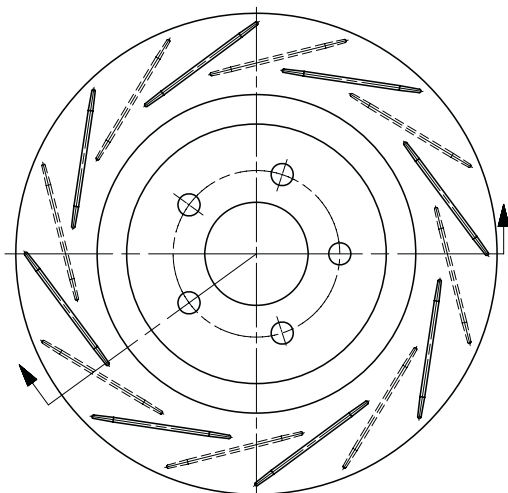
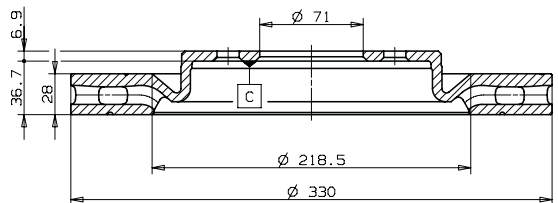


INTERCHANGEABLE WITH
 09.7267.20

C MOUNTING FACE
 Min. TH 26.4 mm
 Weight 8.5 Kg



Family 60 - Size 330 mm - Part No. 09.7267.31/32

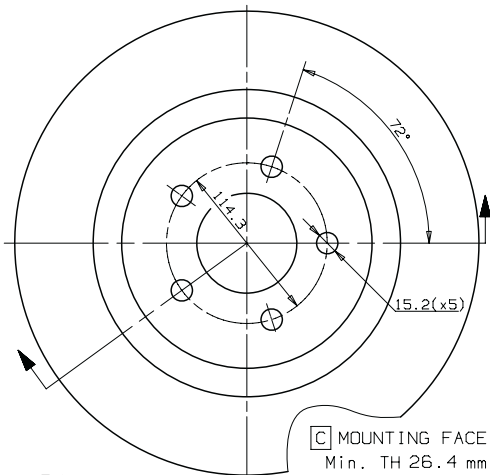
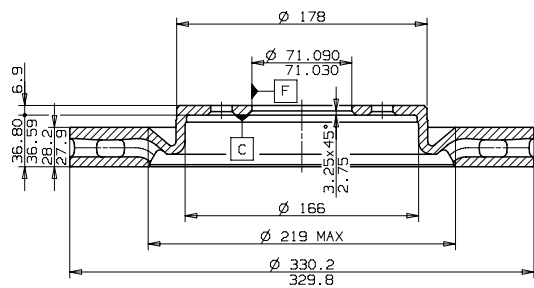


RH BRAKE DISC
INTERCHANGEABLE WITH
09.7267.22

□ MOUNTING FACE
Min. TH 26.4 mm
Weight 8.5 Kg



Family 60 - Size 330 mm - Part No. 09.7267.20

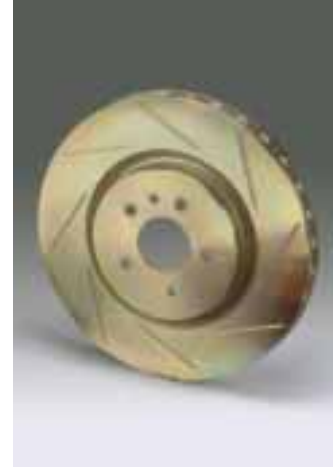
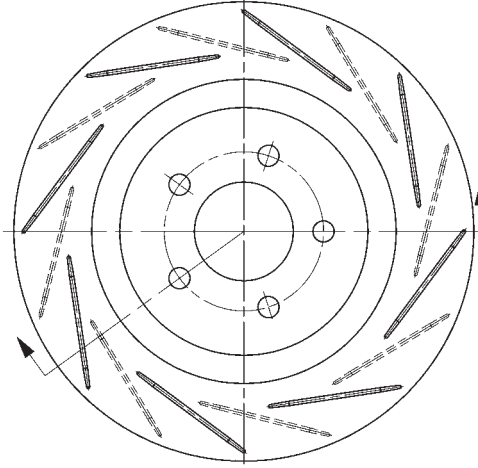
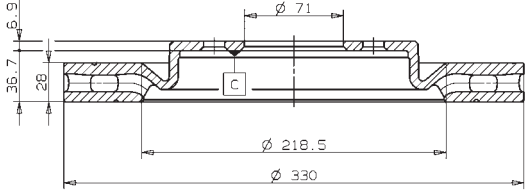
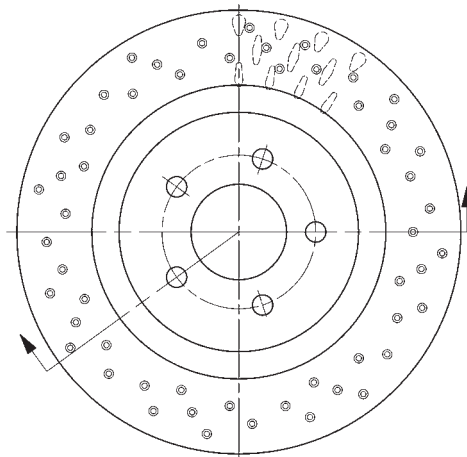
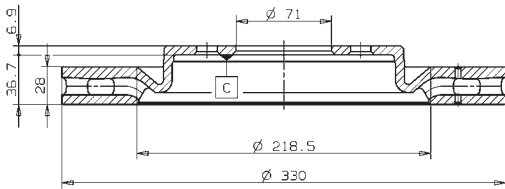


Type DA

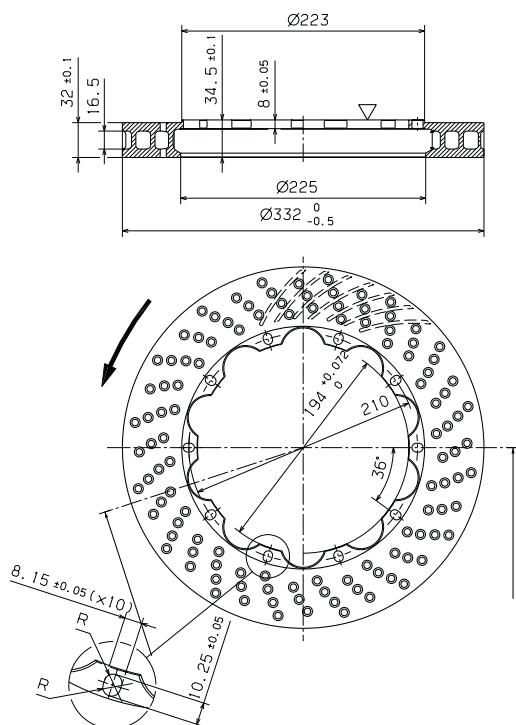
□ MOUNTING FACE
Min. TH 26.4 mm
Weight 8.7 Kg



DISCS

Family 60 - Size 330 mm - Part No. 90.6042**Family 60 - Size 330 mm - Part No. 90.6041**

Family 70 - Size 332 mm - Part No. 09.5682.78/88

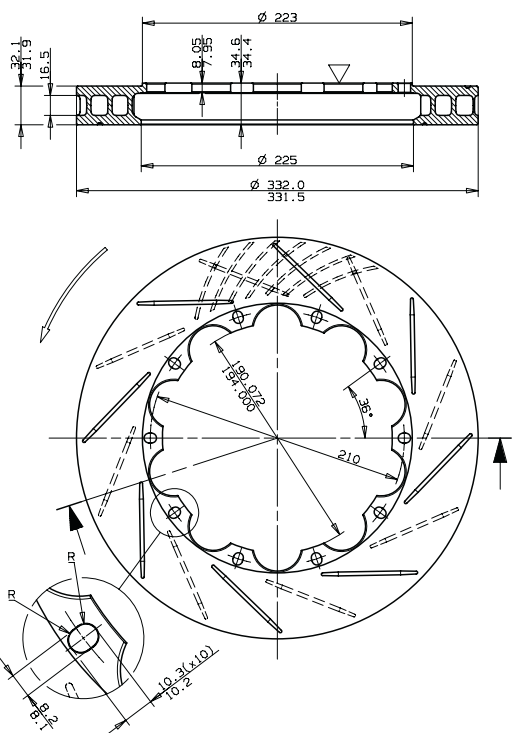


09.5682.78 AS SHOWN
09.5682.88 SYMMETRICALLY OPPOSITE

▽ MOUNTING FACE
WEIGHT 6.2 kg



Family 70 - Size 332 mm - Part No. 09.5682.70/80



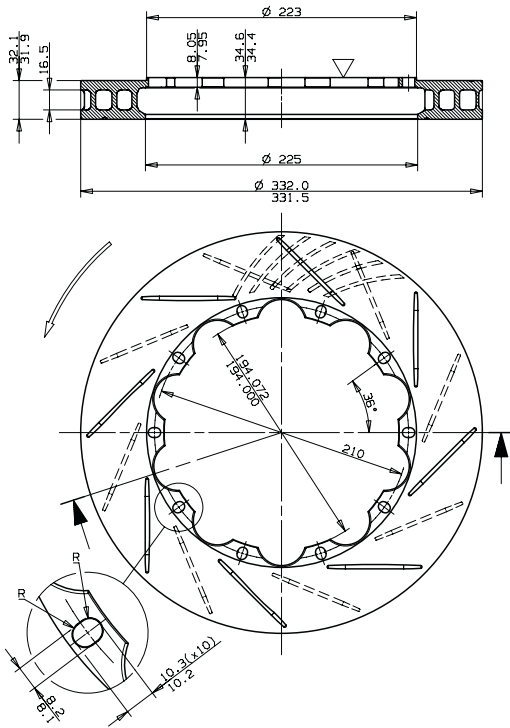
09.5682.70 AS SHOWN
09.5682.80 SYMMETRICALLY OPPOSITE

▽ MOUNTING FACE
WEIGHT 6.5 kg



DISCS

Family 70 - Size 332 mm - Part No. 09.5682.92/93

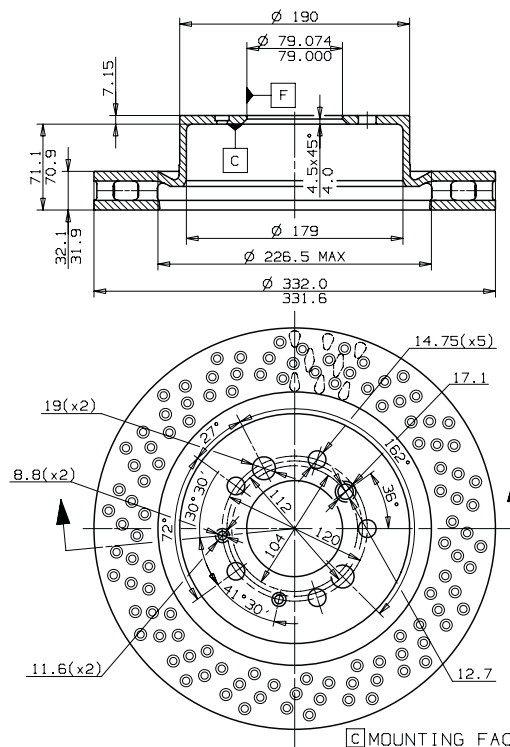


09.5682.92 AS SHOWN
 09.5682.93 SYMMETRICALLY OPPOSITE

▽ MOUNTING FACE
 WEIGHT 6.3 Kg



Family 70 - Size 332 mm - Part No. 09.7265.20

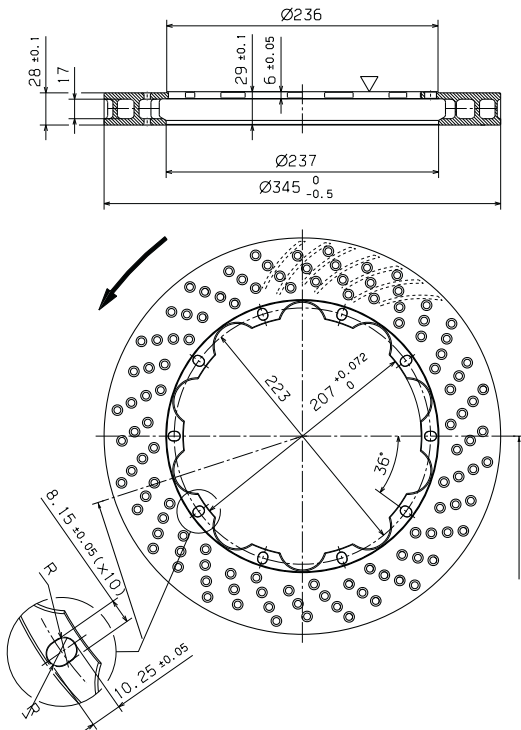


Type DA

□ MOUNTING FACE
 Min. TH 30 mm
 Weight 9.5 Kg



Family 80 - Size 345 mm - Part No. 09.5759.94/95

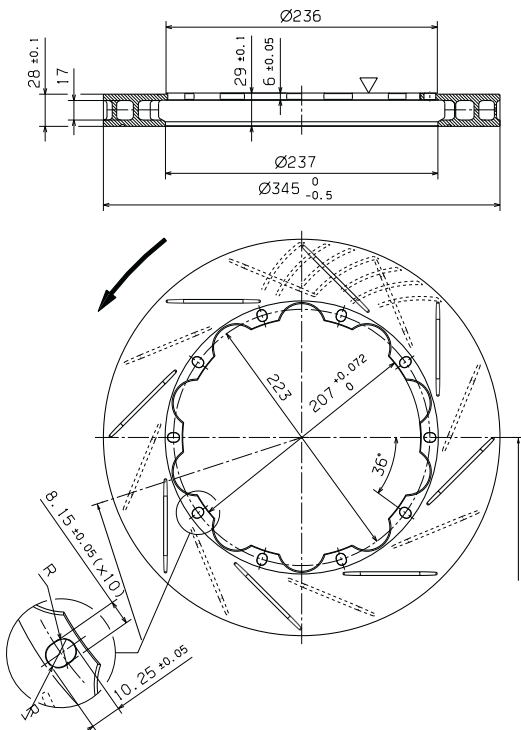


09.5759.94 AS SHOWN
09.5759.95 SYMMETRICALLY OPPOSITE

▽ MOUNTING FACE
WEIGHT 5.2 kg



Family 80 - Size 345 mm - Part No. 09.5759.96/97



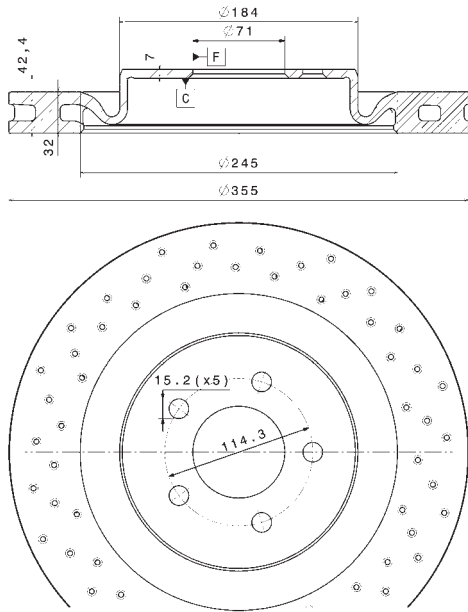
09.5759.96 AS SHOWN
09.5759.97 SYMMETRICALLY OPPOSITE

▽ MOUNTING FACE
WEIGHT 5.3 kg

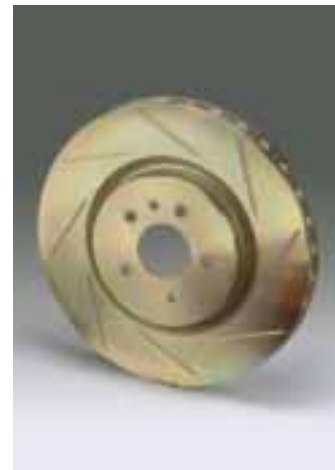
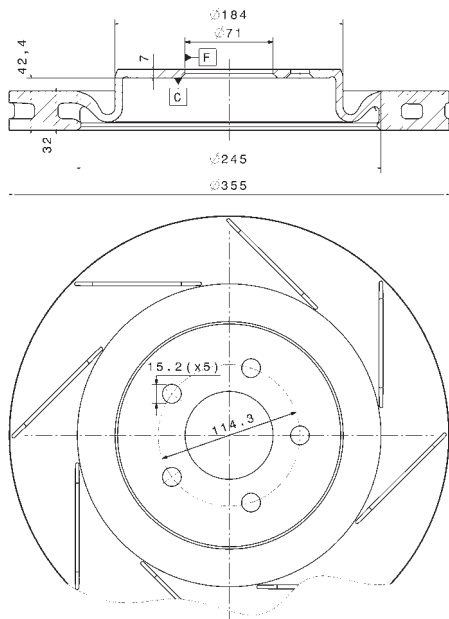


DISCS

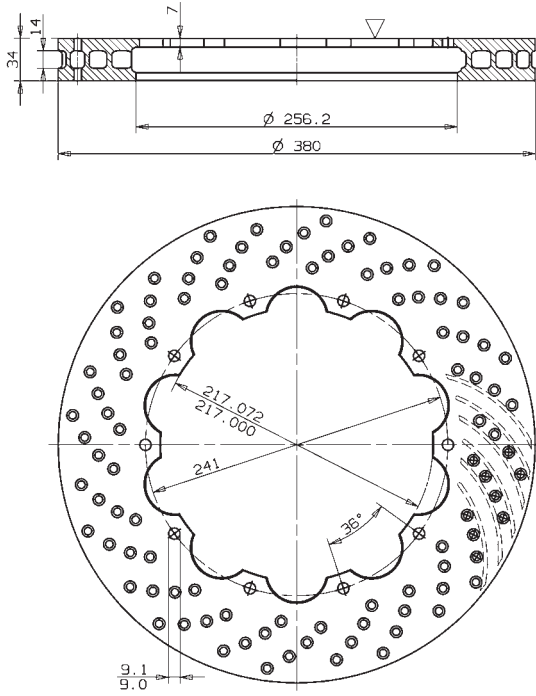
Family 80 - Size 355 mm - Part No. XA5.26.10



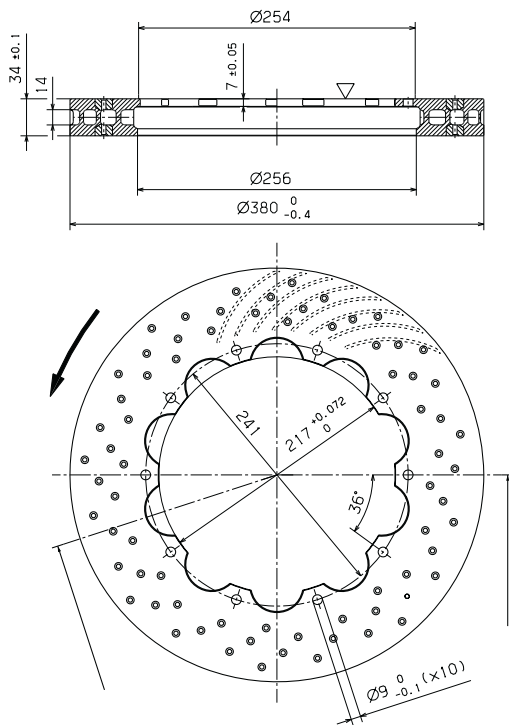
Family 80 - Size 355 mm - Part No. XA5.26.11/21



Family 90 - Size 380 mm - Part No. XP0.09.50/51



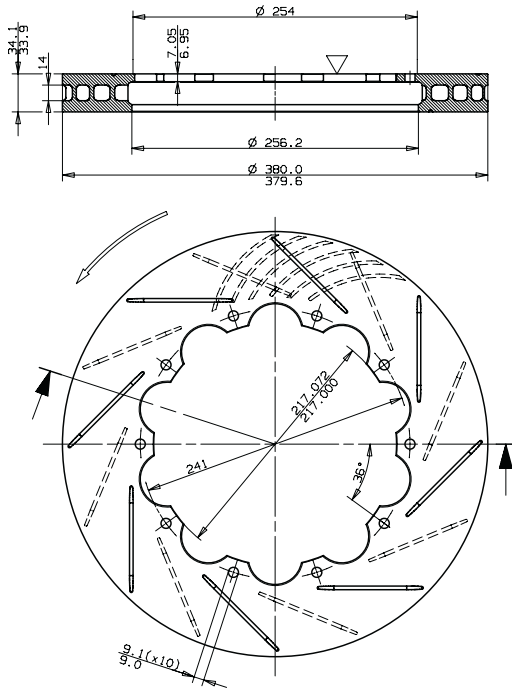
Family 90 - Size 380 mm - Part No. 09.7792.11/21



09.7792.11 AS SHOWN
09.7792.21 SYMMETRICALLY OPPOSITE

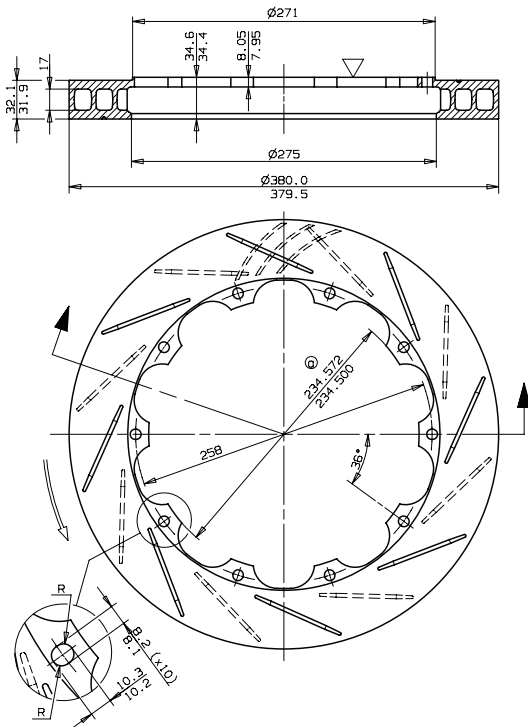
▽ MOUNTING FACE
WEIGHT 10.6 kg

Family 90 - Size 380 mm - Part No. 09.7792.10/20



09.7792.10 AS SHOWN ▽ MOUNTING FACE
 09.7792.20 SYMMETRICALLY OPPOSITE WEIGHT 10.8 Kg

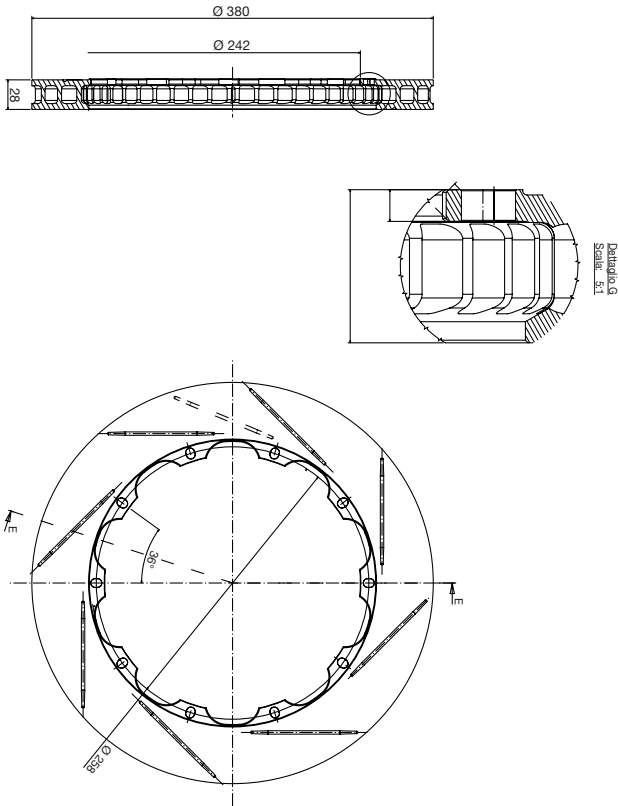
Family 90 - Size 380 mm - Part No. 09.5759.74/84



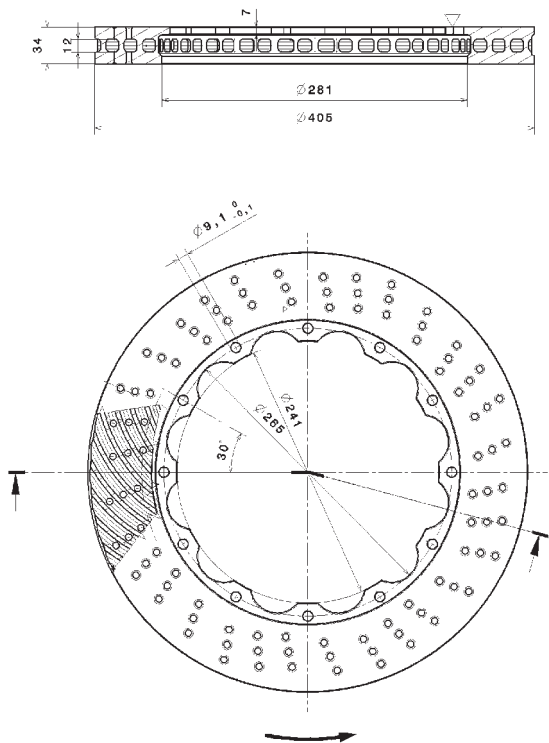
09.5759.74 AS SHOWN ▽ MOUNTING FACE
 09.5759.84 SYMMETRICALLY OPPOSITE ⊙ WEIGHT 7.7 Kg

DISCS

Family 90 - Size 380 mm - Part No. 09.A186.11/21



Family 95 - Size 405 mm - Part No. 09.A226.75/76

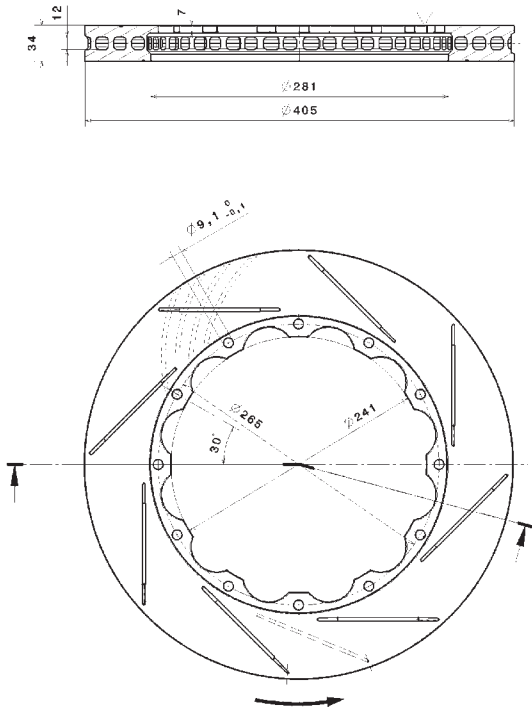


09.A226.75 AS SHOWN
09.A226.76 SIMMETRICALLY OPPOSITE

▽ MOUNTING FACE
WEIGHT 12,7 kg

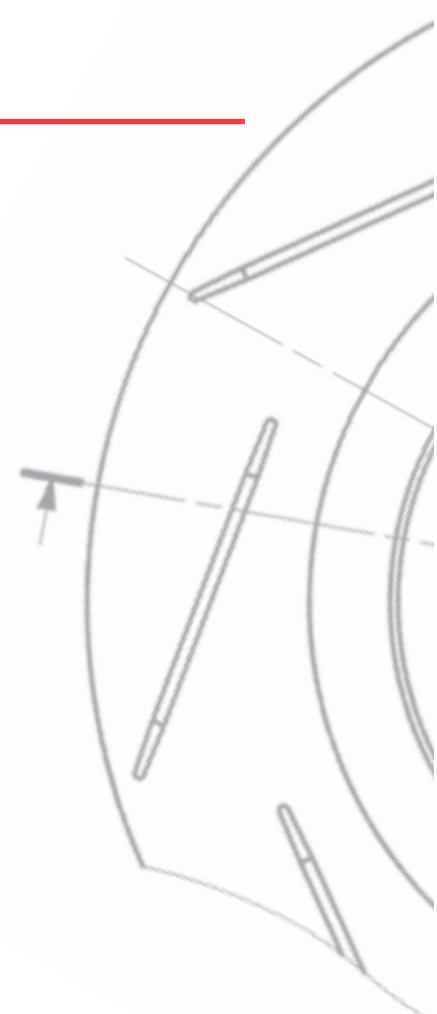
DISCS

Family 95 - Size 405 mm - Part No. 09.A226.80/81

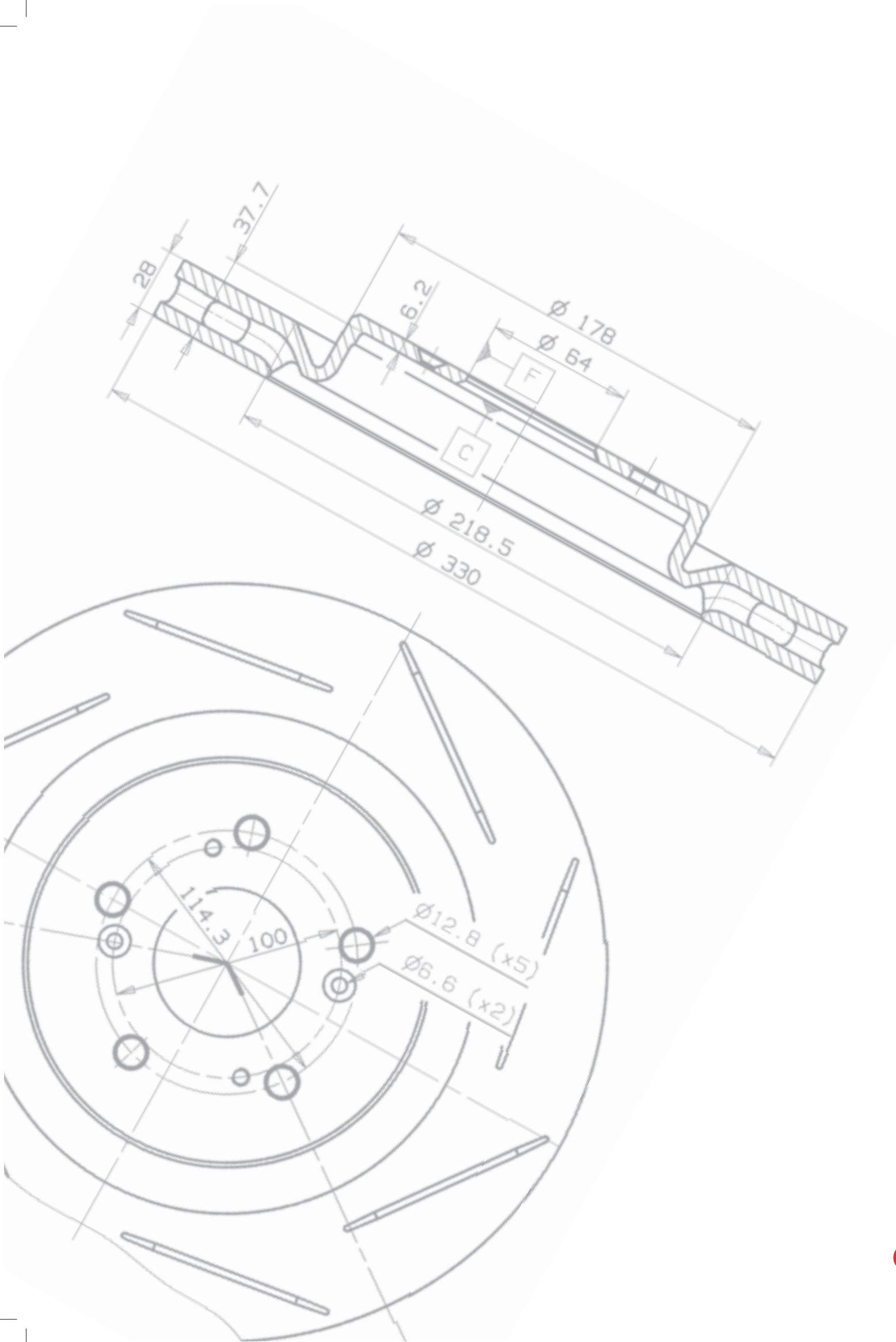


09.A226.80 AS SHOWN
 09.A226.81 SIMMETRICALLY OPPOSITE

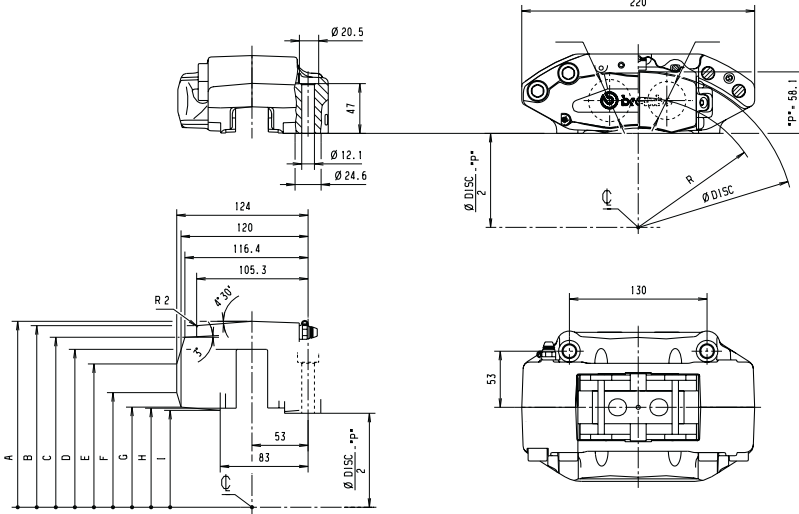
▽ MOUNTING FACE
 WEIGHT 12,7 Kg



There is not correspondence between picture and drawing. Pictures are indicative of Disc Family.

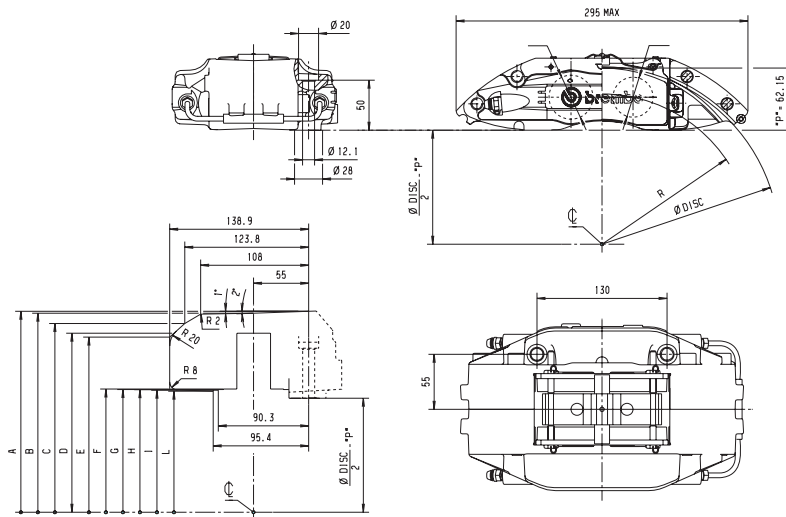


Family A



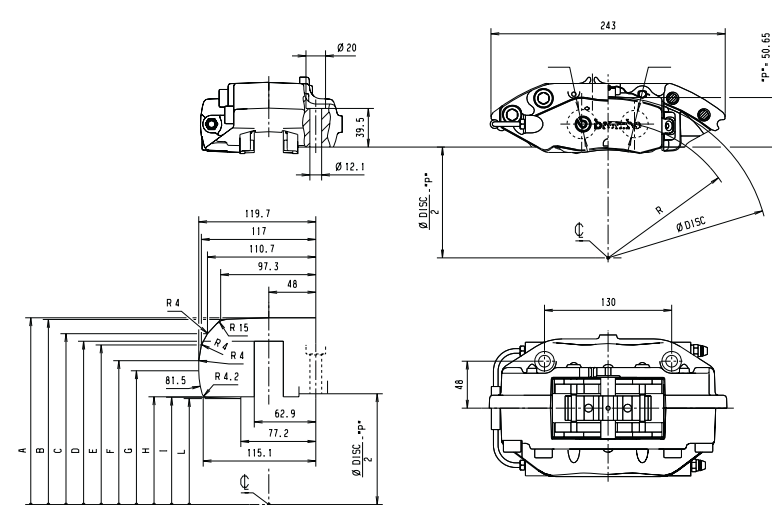
Pad set correspondence
107.5146.31 HP 1000 or
170.5146.30 Galfer

Family B/H



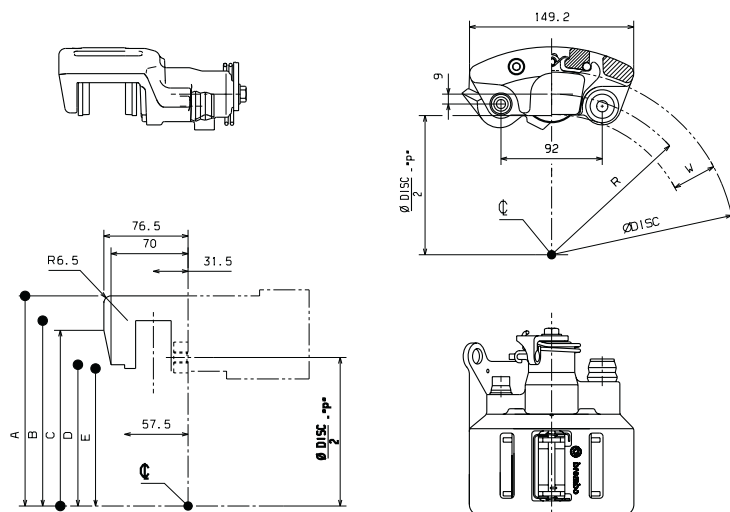
Pad set correspondence
107.4865.80 HP 1000

Family C



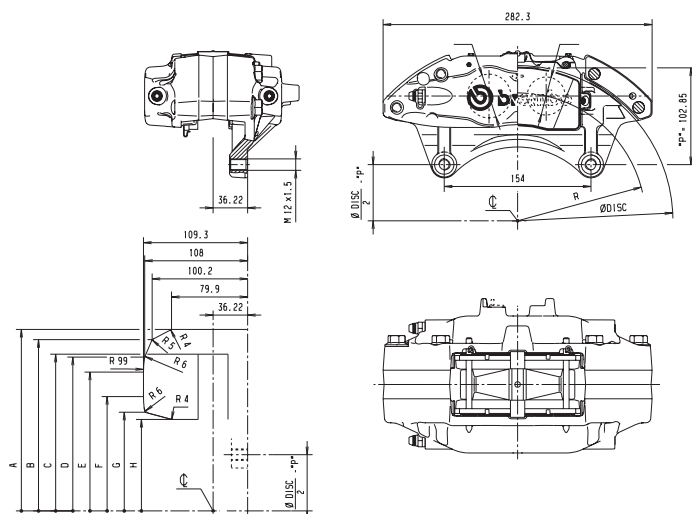
Pad set correspondence
107.5146.31 HP 1000 or
107.5146.30 Galfer

Family D



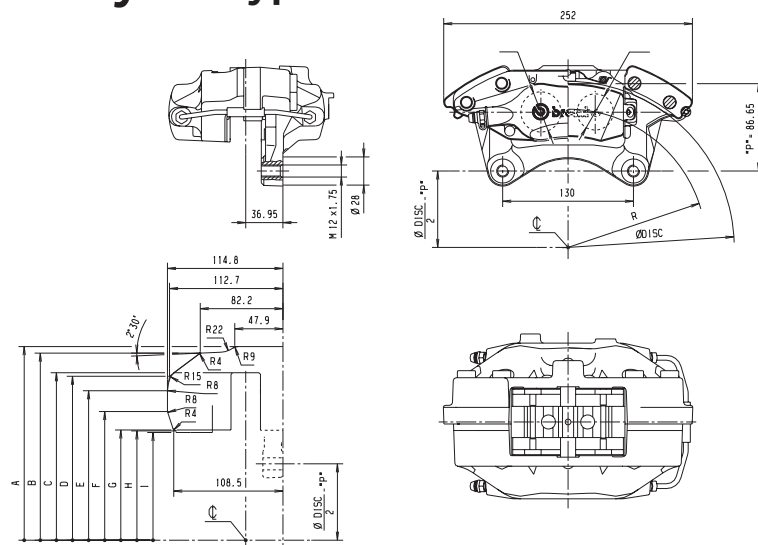
Pad set correspondence
107.5925.10 Ferodo

Family E - Type 1 Front



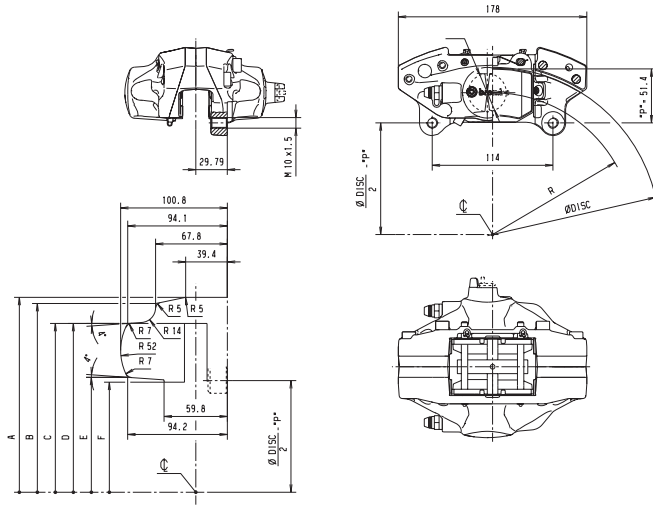
Pad set correspondence
107.5505.71 Jurid

Family E - Type 2 Front



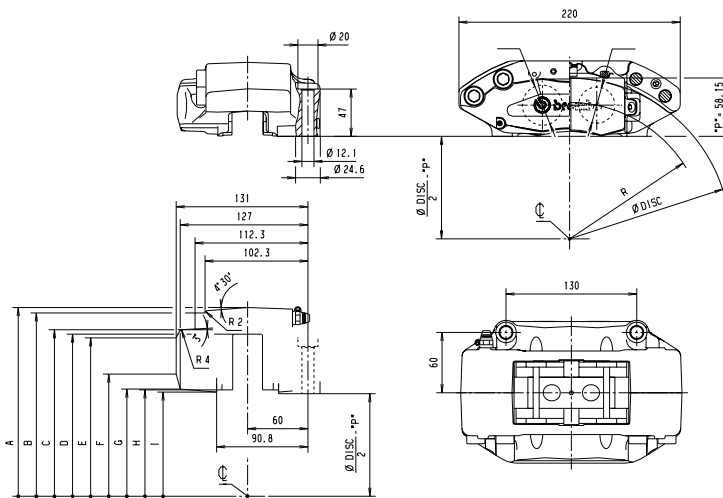
Pad set correspondence
107.8365.21 Jurid

Family E - Type 3 Rear



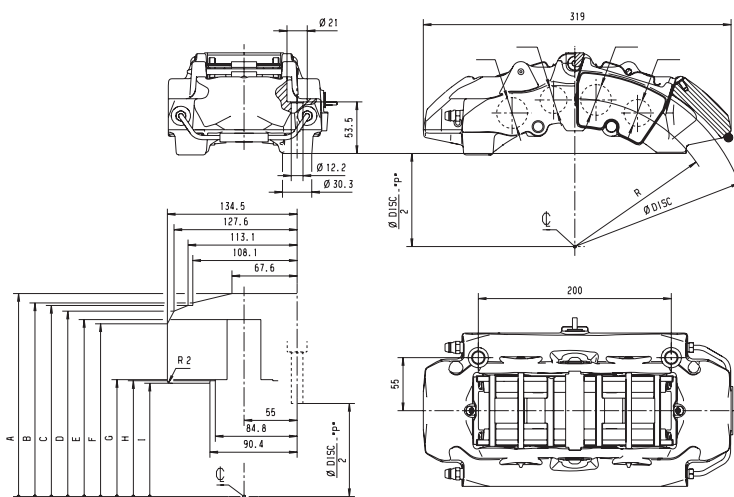
Pad set correspondence
107.6953.12 Galfer

Family F



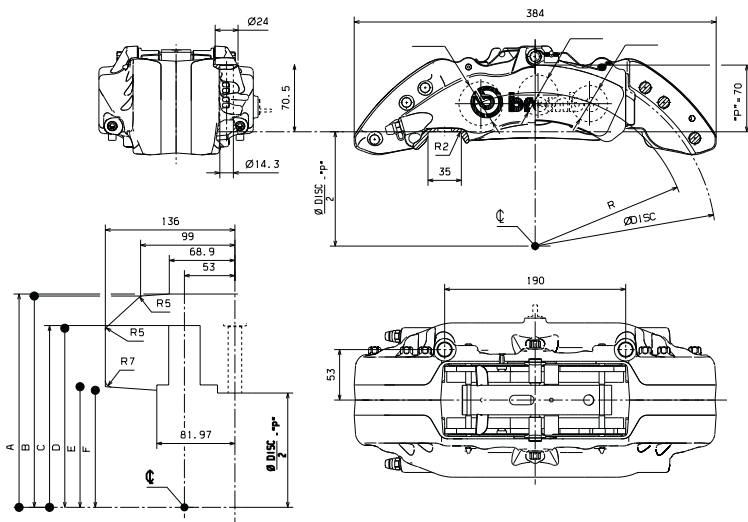
Pad set correspondence
107.5146.31 HP 1000 or
107.5146.30 Galfer

Family G



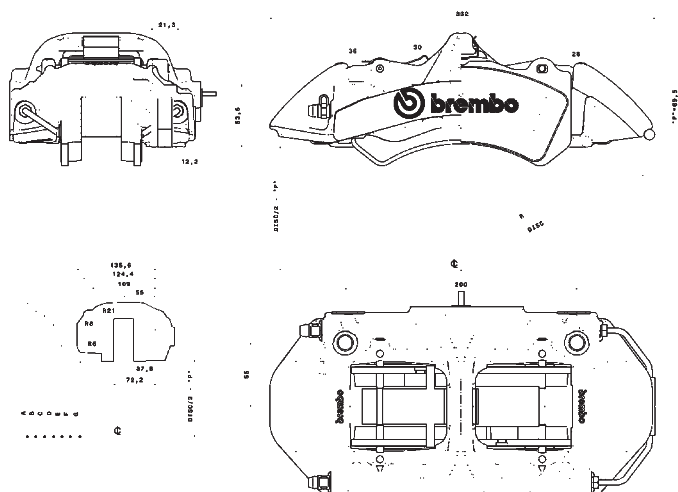
Pad set correspondence
107.9312.44 HP 1000 or
107.8544.20 Jurid or
107.9312.46 Ferodo Racing

Family J



Pad set correspondence
107.9551.13 HP 1000

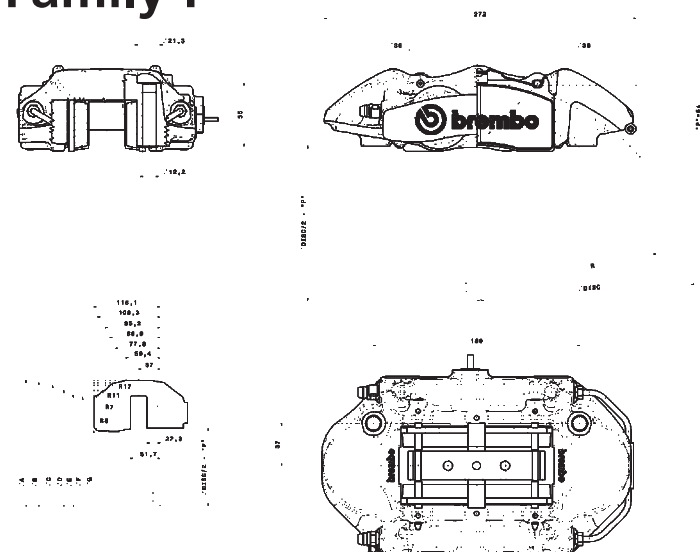
Family M/N



Pad set correspondence 107.9551.13 HP 1000
with rotor 380x34x61,5 or 405x34x61,5

Pad set correspondence XA5.71.M4 HP 1000
with rotor 355x32x53 or 380x32x52

Family P



Pad set correspondence
107.4865.80 HP 1000

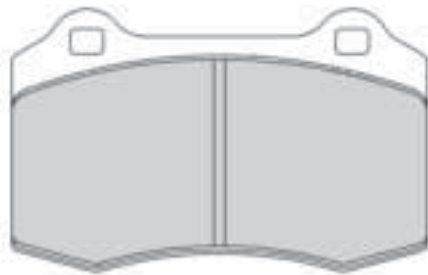
107.5146.30 - 107.5146.31

Caliper family correspondence A/C/F

Galfer

HP1000

Length	Heigth	Thickness
109	51,5	15



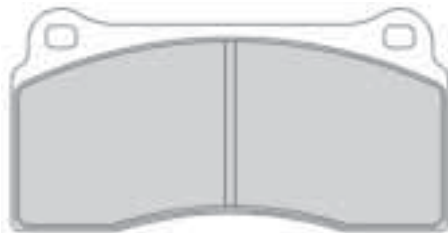
107.4865.80 - 107.4865.80M

Caliper family correspondence B/H/P

HP1000

HP1000

Length	Heigth	Thickness
130	51,7/48,7	18



107.8544.20 - 107.9312.44 - 107.9312.46

Caliper family correspondence G

Jurid

HP1000

Ferodo Racing

Length	Heigth	Thickness
95,3	57,5	16,7



107.9551.13

Caliper family correspondence J/N

HP1000

Length	Heigth	Thickness
186	57,5	17,5



XA5.71.M2

Caliper family correspondence M

HP1000

Length	Heigth	Thickness
186	52,5	17,5



XA5.71.L2

Caliper family correspondence N

HP1000

Length	Heigth	Thickness
186	57,5	17,5



PADS

Pad set/caliper correspondence

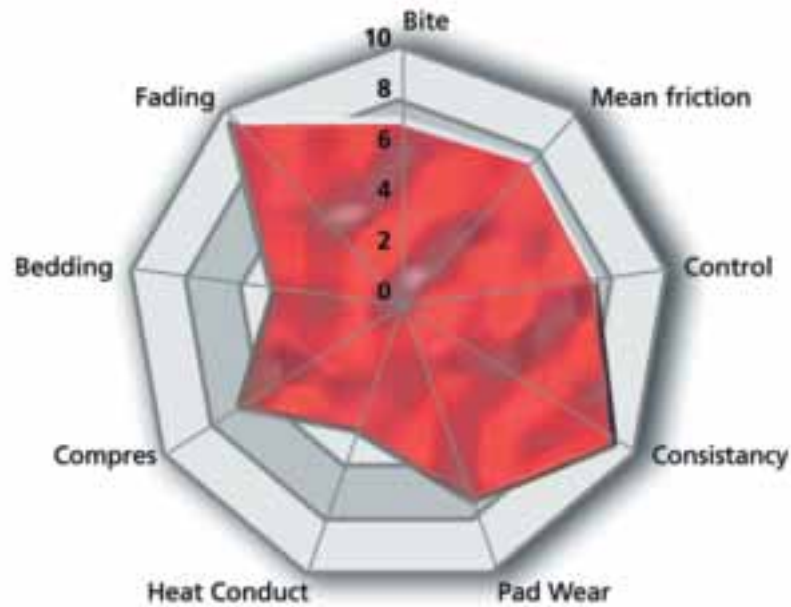
Caliper Family	Rotor Dimension	Rotor Part Number		PAD SET				** Pad Dimensions		
		Drilled	Slotted	HP 1000	Jurid	Galfer	Ferodo Racing	Length	Height	Th.
A	280x28x52	XA3.39.03/06	09.8647.10/20	107.5146.31		107.5146.30		109	51,5	15
	313x28x50,5	XA5.83.10/20	-	107.5146.31		107.5146.30				
	320x28x52	09.5682.55/65	09.5682.50/60	107.5146.31		107.5146.30				
	328x28x53,5	09.5682.15/25	09.5682.94/95	107.5146.31		107.5146.30				
B	332x32x53	09.5682.78/88 - 09.7265.20	09.5682.92/93	107.4865.80				130	51,7 / 48,7	18
	355x32x53	09.5759.35/45	09.5759.13/23	107.4865.80						
	355x32x55	XA5.26.10	XA5.26.11/21	107.4865.80						
	380x32x52	09.5759.98/99	09.5759.74/84	107.4865.80M						
C	328x28x53,5	09.5682.15/25	09.5682.94/95	107.5146.31		107.5146.30		109	51,5	15
	340x26	90.6054	-	107.5146.31		107.5146.30				
D	345x28x53,5	09.5759.94/95	09.5759.96/97	107.5146.31		107.5146.30		88	55,2	10
	-	-	-	-		107.5925.10				
E	294x19x45,5	09.7702.95	09.7702.55/65		107.5505.71			76,7	65,5	14,3
	326x30x63,5	19.7812.95	19.7812.51/61		107.8365.21					
F	330x28x55,7	09.7267.96	09.7267.31/32			107.6953.12		109,6	68,9	17,6
	320x28x49,5	09.5682.55/65	09.5682.50/60	107.5146.31		107.5146.30				
G	320x28x54	09.5585.20	-	107.5146.31		107.5146.30		109	51,5	15
	380x34x61,5	09.7792.11/21	09.7792.10/20	107.9312.44	107.8544.20		107.9312.46			
H	320x32x63,5	XP0.14.05	XP0.14.10/11	107.4865.80				130	51,7 / 48,7	18
	355x32x53	09.5759.35/45 - 90.6053	09.5759.13/23	107.4865.80						
J	380x32x52	09.5759.98/99	09.5759.74/84	107.4865.80M				186	57,5	17,5
	380x34x61,5	09.7792.11/21 - XP00950/51	09.7792.10/20	*207.9551.13/107.9551.13						
M	355x32x53	09.5759.35/45	09.5759.13/23	*XA5.71.M2/XA5.71.M4				186	52,5	17,5
	380x32x52	09.5759.98/99	09.5759.74/84	*XA5.71.M2/XA5.71.M4						
N	380x34x61,5	09.7792.11/21 - XP00950/51	09.7792.10/20	*XA5.71.L2/107.9551.13				186	57,5	17,5
	405x34x61,5	09.A226.75/76	09.A226.80/81	*XA5.71.L2/107.9551.13						
P	328x28x53,5	09.5682.15/25	09.5682.94/95	107.4865.80				130	51,7 / 48,7	18
	345x28x53,5	09.5759.94/95	09.5759.96/97	*207.4865.80/107.4865.80						
	380x28x53,5	09.A186.10/20	09.A186.11/21	107.4865.80						

* The first part number refers to pads with springs and pins. The second one refers to pads without springs and pins.

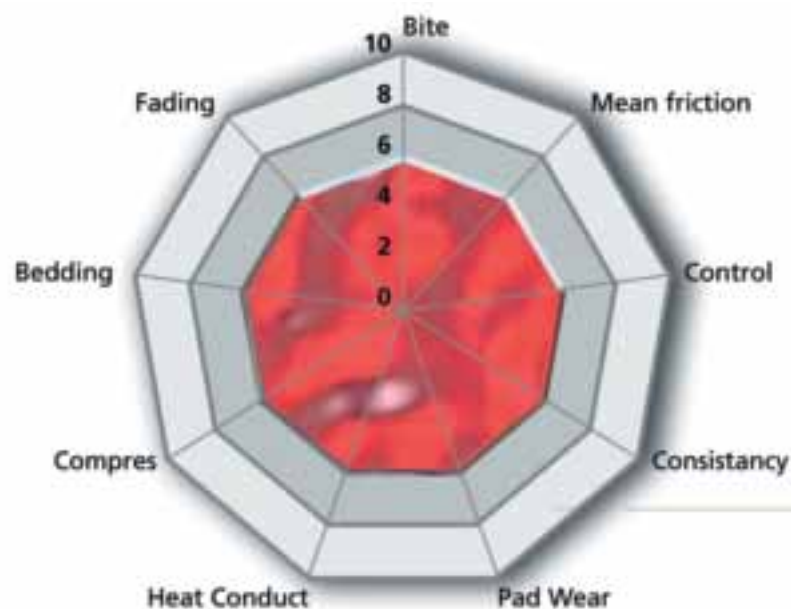
** Pad dimensions refer to all backing plate

Friction material characteristics

High Performance HP 1000



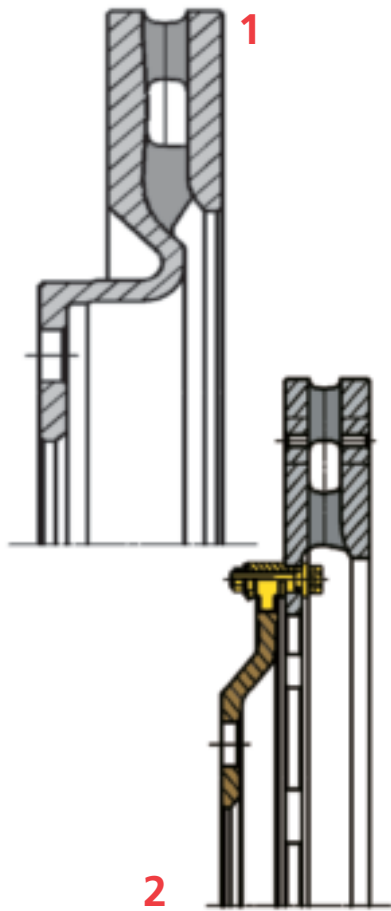
OE



Radar Chart Index

Bite	Friction measured at the beginning of braking action
Mean Friction	Average level of friction during braking
Control	Constant and high level of friction
Consistency	Capability to repeat the same curve of friction stop after stop
Pad wear	Loss of material (reduction of thickness)
Heat Conduct.	Thermal conductivity of the material
Compresibility	Elasticity of the material during compression
Bedding	Ability to make the disc ready for a right use in short time
Fading	Reduction of friction level due to the temperature

■ Bushing for floating discs



The GRAN TURISMO Line offers a choice for those needing a higher level of performance. The two categories on this program are:

GRAN TURISMO LINE - ONE PIECE: (Figure 1)

It is the newest line of the High Performance program. It is the answer to the market needs. The best trade off between price and performance. Made by 4 pistons aluminum calipers, vented integral discs, high performance brake pads and steel braided brake lines. The line has been developed to meet a medium-high level of performance on applications with smaller disc diameters and with a price advantage.

GRAN TURISMO LINE - TWO PIECES: (Figure 2)

This line is available for the most demanding customers. As the braking system primary function is to dissipate heat, larger, more sophisticated discs are used in order to increase the system fading resistance. These are floating discs directionally vented for enhance cooling, as well as drilled and slotted for improved consistency, continuously cleaning and refreshing the pad surface. Application available with 4, 6 and 8 pistons aluminium calipers, complete set of high performance pads, steel braided brake lines and high quality small parts. In most applications a two piece "floating" disc assembly is used, with a cast iron disc specially mounted to a billet aluminum hat. One of the advantages of this type of construction is reduce weight. By making the center section of the disc out of aluminum a great deal of weight can be saved in a key location, as it is both unsprung and rotating. The greatest advantage however lies in the float itself. With the full floating system, the disc is free to grow relative to the bell, and can remain straight and true.

The ability to float is obtain by the bobbin which main functions are: to join the rotor to the bell, transmit the braking torque from the rotor to the bell, and during thermal stress the bushing prevents disc warping by allowing the rotor to expand radially.

IMPORTANT NOTICE

The coupling between bell, rotor and bushing has been carefully studied by Brembo to prevent performance and comfort problems by defining the correct tolerances for all components and the proper tightening torque.

TYPES

Round Bobbin (a and b):

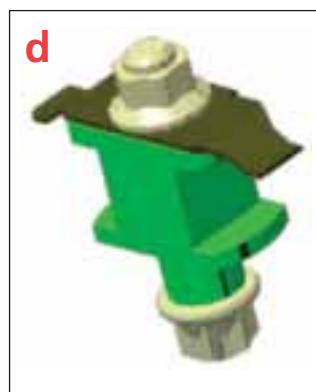
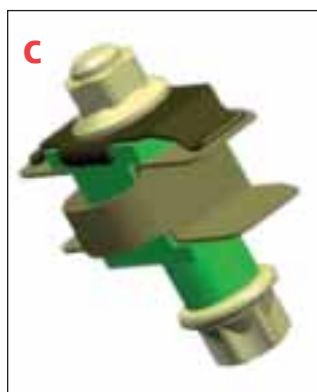
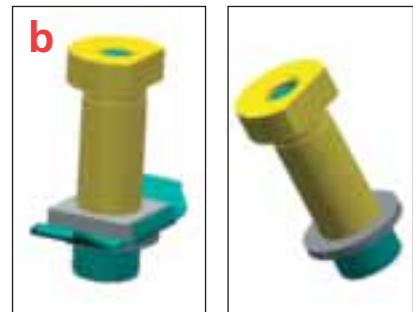
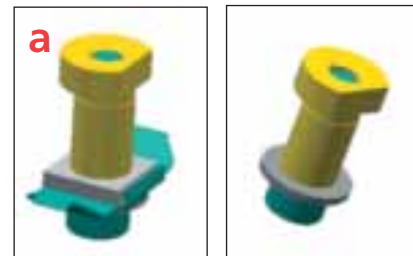
The bobbin and bell fit together in a round fixing hole. During braking, the torque is transmitted from the rotor to the bell through the bobbin.

In this case, where we have a round bobbin, the stress surface is the one that touches the fixing hole.

Type of bolt:

12mm (a)

16mm (b)



Bobbin with a flat surface (c and d):

The bobbin and bell fit together on a flat surface. During braking, the torque is transmitted from the rotor to the bell through the bobbin. Stress is operated along this flat surface, which is much bigger in types a and b. In case the stress is high, the pressure ($F/Surf$) is lower and a longer lifetime will be obtained.

■ Brembo Brake Fluid Sport.EVO 500++

FORMULATED FOR THE ENTHUSIAST

Brembo SPORT.EVO 500++ is a premium specification Motor Vehicle Brake and Clutch Fluid which conforms to and exceeds the current international specifications U.S. FMVSS No.116 DOT 3 and DOT 4, SAE J1703,SAE J1704 and ISO 4925. Typical dry boiling point 271 Deg C., typical wet boiling point 169 Deg.C.

Brembo SPORT.EVO 500++ will mix safely with other DOT 3,DOT 4 and DOT 5.1 brake and clutch fluids conforming to the above specifications.

Whilst Brembo SPORT.EVO 500++ is suitable for use in the hydraulic brake and clutch systems of all cars, commercial vehicles and motorcycles for which a non-petroleum based fluid is specified ,it has been specially formulated to meet the system performance requirements of the ENTHUSIAST upgrading the Braking System using a Brembo High Performance Kit.

Brembo SPORT.EVO 500++ is well suited to vehicles with ABS braking systems.

For maximum safety and performance Brembo recommends that brake fluid is changed every year.

NOT SUITABLE FOR VEHICLES WITH MINERAL OIL SYSTEMS (eg. certain Citroen models). If in doubt consult vehicle handbook.

USAGE

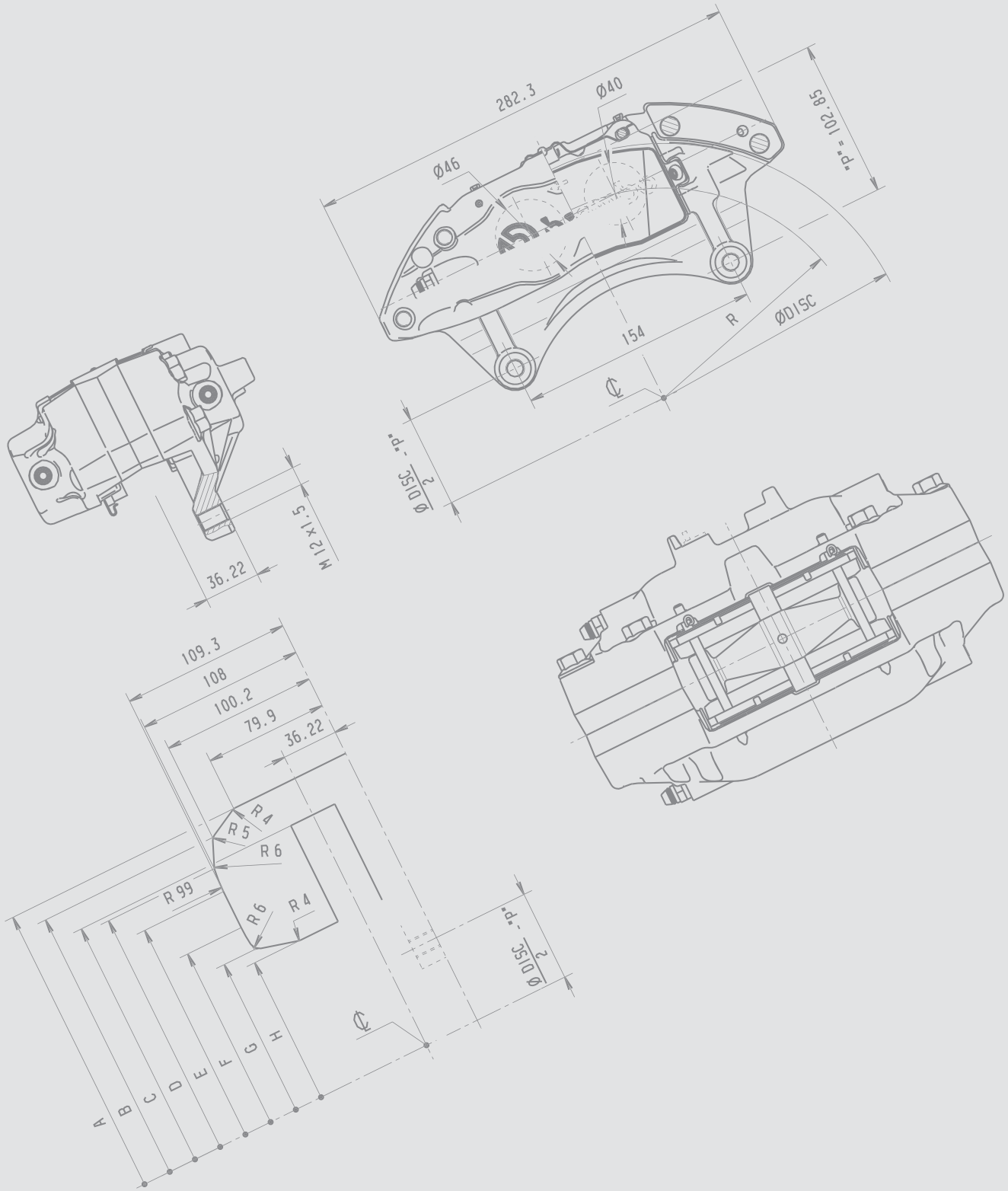
- FOLLOW VEHICLE MANUFACTURERS RECOMMENDATIONS WHEN ADDING BRAKE FLUID
- KEEP BRAKE FLUID CLEAN AND DRY. Contamination with dirt, water ,petroleum products or other materials may result in brake failure or costly repairs.
- STORE BRAKE FLUID ONLY IN ITS ORIGINAL CONTAINER. KEEP CONTAINER CLEAN AND TIGHTLY CLOSED TO PREVENT ABSORPTION OF WATER.
- CAUTION.DO NOT REFILL CONTAINER AND DO NOT USE FOR OTHER LIQUIDS.

CAUTION

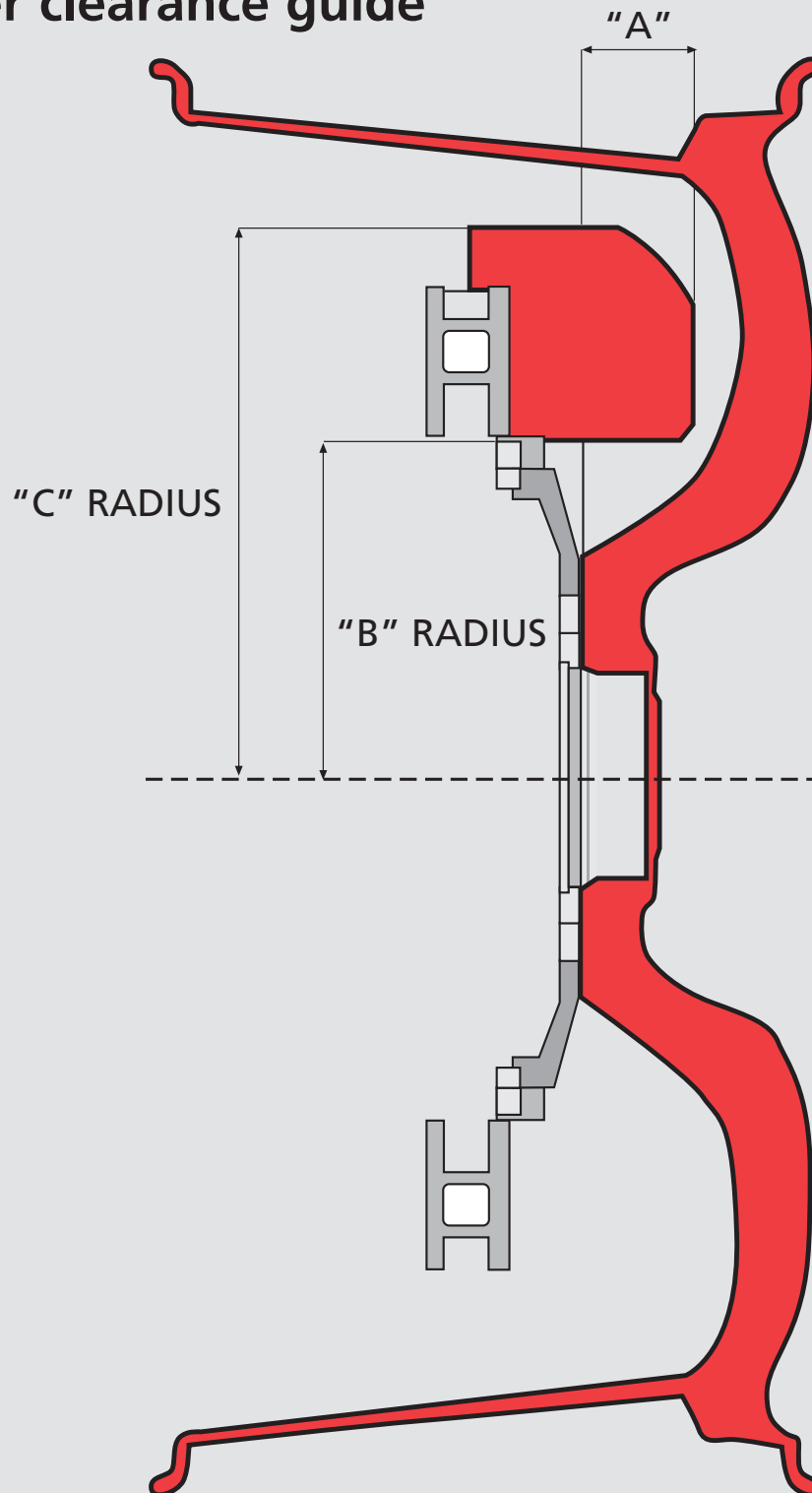
- IRRITATING TO EYES
- KEEP OUT OF REACH OF CHILDREN
- CONTAINS POLYALKYLENE GLYCOL ETHERS AND POLYGLYCOLS.DO NOT SWALLOW. If swallowed, call medical assistance immediately and show this container.
- AVOID SKIN AND EYE CONTACT. In case of eye contact flush with plenty of water for 10 minutes. If irritation persists, seek medical advice. BRAKE FLUID WILL DAMAGE PAINTWORK. If spilt wash off immediately with plenty of water.



BREMBO BRAKE FLUID



■ Caliper clearance guide



Wheel Measurement

General Note

Given dimensions are related to the Brake system. Brembo recommends a minimum clearance of 3mm between the caliper and the wheel spoke or rim.

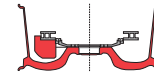
Example

1B1.8006A for Chevrolet C5 Corvette

- With a straight edge, measure from the middle of the wheel center bore out to 122 mm for the location of the bottom of the caliper.
 - Now measure down from the straight edge to the back of the wheel spoke for the system's "A" measurement. This system needs 49mm or more to leave sufficient caliper clearance.
- Repeat these (two) steps for caliper clearance through to the top of the caliper.

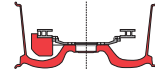
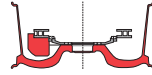
Dimensions A,B and C can be more easily measured by using the "Caliper Clearance Kit", an innovative patented tool, exclusively designed by Brembo Performance R&D. In few minutes you can check if GT brake system correctly fits your car wheels. For further information on price and availability, please refer to your dealer

Caliper Clearance Guide



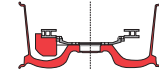
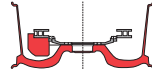
Part Number		Caliper Clearance Guide		
Drilled	Slotted	A	B	C
101.5001A	N/A	OE	OE	OE
101.8001A	102.8001A	OE	OE	OE
101.9003A	102.9003A	OE	OE	OE
101.9006A	102.9006A	OE	OE	OE
111.5001A	N/A	41	103	184
111.6003A	112.6003A	36	110	192
111.6005A	112.6005A	36	110	192
111.6008A	112.6008A	36	110	192
111.6017A	112.6017A	36	110	192
121.7005A	122.7005A	37	110	188
1A1.3001A	1A2.3001A	51	85	170
1A1.3002A	1A2.3002A	51	85	170
1A1.3003A	1A2.3003A	51	85	170
1A1.3004A	1A2.3004A	45	86	168
1A1.5001A	N/A	37	103	184
1A1.5002A	N/A	-	103	184
1A1.5003A	N/A	33	103	184
1A1.5004A	N/A	7	103	184
1A1.6001A	1A2.6001A	41	110	192
1A1.6005A	1A2.6005A	36	110	192
1A1.6006A	1A2.6006A	23	110	192
1A1.6007A	1A2.6007A	45	110	192
1A1.6008A	1A2.6008A	29	110	192
1A1.6009A	1A2.6009A	32	110	192
1A1.6010A	1A2.6010A	23	110	192
1A1.6011A	1A2.6011A	45	110	192
1A1.6012A	1A2.6012A	38	110	192
1A1.6013A	1A2.6013A	32	110	192
1A1.6014A	1A2.6014A	36	110	192
1A1.6015A	1A2.6015A	32	110	192
1A1.6016A	1A2.6016A	38	110	192
1A1.6017A	1A2.6017A	36	110	192
1A1.6018A	1A2.6018A	34	110	192
1A1.6020A	1A1.6020A	40	110	192
1A1.6022A	1A1.6022A	34	110	192
1A1.6024A	1A2.6024A	29	110	192
1A1.6025A	1A2.6025A	37	104	188
1A1.6026A	1A2.6026A	41	109	194
1A1.6027A	1A2.6027A	17	110	195
1A1.6028A	1A2.6028A	33	110	192
1A4.5001A	1A5.5001A	32	104	185
N/A	1A5.5004A	40	99	179
1A4.5005A	1A5.5005A	41	96	180
1A4.5006A	1A5.5006A	38	92	183
1A4.5007A	1A5.5007A	41	96	180
1A4.5008A	1A5.5008A	57	92	181
1A4.5009A	1A5.5009A	57	92	181

Part Number		Caliper Clearance Guide		
Drilled	Slotted	A	B	C
1A4.5010A	1A5.5010A	57	92	181
1A4.5011A	1A5.5011A	41	96	180
1A4.5013A	N/A	45	99	180
1A4.6002A	1A5.6002A	51	108	190
1A4.6003A	1A5.6003A	41	110	192
1A4.6004A	N/A	41	110	192
1A4.6005A	N/A	41	110	192
1A4.6006A	1A5.6006A	51	108	190
1A4.6007A	1A5.6007A	51	108	190
1A4.6008A	1A5.6008A	41	108	193
1A4.6009A	1A5.6009A	41	110	195
1A4.6010A	1A5.6010A	25	110	195
1B1.7001A	1B2.7001A	48	110	188
1B1.7002A	1B2.7002A	41	110	188
1B1.7003A	1B2.7003A	36	110	188
1B1.7004A	1B2.7004A	40	110	188
1B1.7005A	1B2.7005A	48	110	188
1B1.7006A	1B2.7006A	48	110	188
1B1.7007A	1B2.7007A	41	110	188
1B1.7008A	1B2.7008A	34	110	188
1B1.7009A	1B2.7009A	19	110	188
1B1.7010A	1B2.7010A	29	110	188
1B1.7011A	1B2.7011A	29	110	188
1B1.7012A	1B2.7012A	29	110	188
1B1.7013A	1B2.7013A	48	110	188
1B1.7014A	1B2.7014A	45	110	188
1B1.7016A	1B2.7016A	46	110	188
1B1.7017A	1B2.7017A	51	110	188
1B1.8001A	1B2.8001A	46	122	200
1B1.8002A	1B2.8002A	51	122	200
1B1.8003A	1B2.8003A	41	122	200
1B1.8005A	1B2.8005A	35	122	200
1B1.8006A	1B2.8006A	46	122	200
1B1.8007A	1B2.8007A	36	122	200
1B1.8008A	1B2.8008A	40	122	200
1B1.8009A	1B2.8009A	40	122	200
1B1.8010A	1B2.8010A	21	122	200
1B1.8011A	1B2.8011A	21	122	200
1B1.8012A	1B2.8012A	15	122	200
1B1.8013A	1B2.8013A	47	122	200
1B1.8014A	1B2.8014A	41	122	200
1B1.8015A	1B2.8015A	40	122	200
1B1.8016A	1B2.8016A	29	112	200
1B1.8017A	1B2.8017A	43	122	200
1B1.8018A	1B2.8018A	34	122	200
1B1.8019A	1B2.8019A	16	122	200
1B1.8020A	1B2.8020A	43	122	200



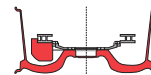
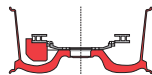
Part Number		Caliper Clearance Guide		
Drilled	Slotted	A	B	C
1B1.8021A	1B2.8021A	43	122	200
1B1.8022A	1B2.8022A	25	122	200
1B1.8023A	1B2.8023A	-	122	200
1B1.8024A	1B2.8024A	-	122	200
1B1.8025A	1B2.8025A	17	122	200
1B1.8026A	1B2.8026A	20	122	200
1B1.8027A	1B2.8027A	15	122	200
1B1.8028A	1B2.8028A	32	122	200
1B1.8029A	1B2.8029A	48	122	200
1B1.8030A	1B2.8030A	48	122	200
1B1.8031A	1B2.8031A	39	122	200
1B1.8032A	1B2.8032A	48	122	200
1B1.8033A	1B2.8033A	29	122	200
1B1.8034A	1B2.8034A	61	122	200
1B1.8035A	1B2.8035A	35	122	200
1B1.8037A	1B2.8037A	30	122	200
1B1.8038A	1B2.8038A	49	122	200
1B1.8039A	1B2.8039A	54	122	200
1B1.8040A	1B2.8040A	36	122	200
1B1.8041A	1B2.8041A	45	122	200
1B1.8042A	1B2.8042A	51	122	200
1B1.8043A	1B2.8043A	58	122	199
1B1.8044A	1B2.8044A	37	122	200
1B1.8045A	1B2.8045A	38	122	200
1B1.8046A	1B2.8046A	47	122	200
1B1.8047A	1B2.8047A	51	122	200
1B1.8048A	1B2.8048A	34	122	199
1B1.9003A	1B2.9003A	48	137	215
1B4.6001A	N/A	53	104	182
1B4.6002A	1B5.6002A	55	105	185
1B4.7001A	N/A	19	110	188
1B4.8001A	1B5.8001A	47	122	200
1E4.6001A	1E5.6001A	48	109	193
1E4.6002A	1E5.6002A	35	104	191
1F1.6001A	1F2.6001A	25	106	188
1F4.6002A	N/A	25	106	188
1G1.9001A	1G2.9001A	38	125	218
1G1.9002A	1G2.9002A	34	125	218
1G1.9004A	1G2.9004A	45	125	218
1G1.9005A	1G2.9005A	15	125	218
1G1.9006A	1G2.9006A	15	125	218
1G1.9007A	1G2.9007A	15	125	218
1G1.9011A	1G2.9011A	32	125	218
1G1.9012A	1G2.9012A	18	125	218
1G1.9013A	1G2.9013A	33	125	218
1G1.9014A	1G2.9014A	35	125	218
1G1.9015A	1G2.9015A	14	125	218

Part Number		Caliper Clearance Guide		
Drilled	Slotted	A	B	C
1G1.9016A	1G2.9016A	28	125	218
1G1.9017A	1G2.9017A	39	125	218
1G1.9018A	1G2.9018A	18	125	218
1G1.9019A	1G2.9019A	46	125	218
1G1.9020A	1G2.9020A	44	125	218
1G1.9021A	1G2.9021A	35	125	218
1G1.9022A	1G2.9022A	32	125	218
1G1.9023A	1G2.9023A	15	125	218
1G1.9024A	1G2.9024A	36	125	218
1G1.9026A	1G2.9026A	14	125	218
1G1.9028A	1G2.9028A	46	125	218
1G1.9029A	1G2.9029A	41	125	218
1G1.9031A	1G2.9031A	53	125	218
1G1.9032A	1G2.9032A	32	125	218
1G1.9033A	1G2.9033A	38	125	218
1G1.9034A	1G2.9034A	51	125	218
1G1.9035A	1G2.9035A	36	125	218
1G1.9036A	1G2.9036A	44	125	218
1G1.9037A	1G2.9037A	28	125	218
1H1.7001A	1H2.7001A	34	110	188
1H1.8001A	1H2.8001A	24	122	200
1H1.8002A	1H2.8002A	40	122	200
1H1.8004A	1H2.8004A	41	122	199
1H1.8005A	1H2.8005A	16	122	200
1H1.9002A	1H2.9002A	40	137	215
1H1.9004A	1H2.9004A	25	137	215
1H4.6003A	1H5.6003A	55	105	185
1H4.6004A	1H5.6004A	56	103	185
1H4.8001A	N/A	52	122	200
1H4.8002A	N/A	52	122	200
1J1.9001A	1J2.9001A	11	126	224
1J1.9002A	1J2.9002A	40	126	224
1J1.9003A	1J2.9003A	42	126	224
1J1.9004A	1J2.9004A	40	126	224
1J1.9005A	1J2.9005A	38	126	224
1J1.9006A	1J2.9006A	40	126	224
1J1.9007A	1J2.9007A	11	126	224
1J1.9008A	1J2.9008A	11	126	224
1M1.8001A	1M2.8001A	24	122	210
1M1.8002A	1M2.8002A	29	122	210
1M1.8003A	1M2.8003A	29	122	210
1M1.8004A	1M2.8004A	29	122	210
1M1.8005A	1M2.8005A	29	122	210
1M1.8006A	1M2.8006A	39	122	210
1M1.8007A	1M2.8007A	39	122	210
1M1.8008A	1M2.8008A	39	122	210
1M1.8009A	1M2.8009A	23	122	210



Part Number		Caliper Clearance Guide		
Drilled	Slotted	A	B	C
1M1.8010A	1M2.8010A	13	122	210
1M1.8011A	1M2.8011A	50	122	210
1M1.8012A	1M2.8012A	44	122	210
1M1.8013A	1M2.8013A	46	122	210
1M1.8014A	1M2.8014A	51	122	210
1M1.8015A	1M2.8015A	44	122	210
1M1.8016A	1M2.8016A	46	122	210
1M1.8017A	1M2.8017A	36	122	210
1M1.8018A	1M2.8018A	36	122	210
1M1.8019A	1M2.8019A	40	122	210
1M1.8020A	1M2.8020A	39	122	210
1M1.8021A	1M2.8021A	47	122	210
1M1.8022A	1M2.8022A	47	122	210
1M1.8023A	1M2.8023A	32	122	210
1M1.8024A	1M2.8024A	47	122	210
1M1.8025A	1M2.8025A	49	122	210
1M1.8026A	1M2.8026A	58	122	210
1M1.8027A	1M2.8027A	36	122	210
1M1.8028A	1M2.8028A	35	122	210
1M1.8029A	1M2.8029A	51	122	210
1M1.8030A	1M2.8030A	42	122	210
1M1.8031A	1M2.8031A	46	122	210
1M1.8032A	1M2.8032A	50	122	210
1M1.8033A	1M2.8033A	51	122	210
1M1.9001A	1M2.9001A	40	134	221
1M1.9002A	1M2.9002A	46	134	221
1M1.9003A	1M2.9003A	51	134	221
1M1.9004A	1M2.9004A	29	134	221
1M1.9005A	1M2.9005A	29	134	221
1M1.9006A	1M2.9006A	29	134	221
1M1.9008A	1M2.9008A	55	134	221
1M1.9009A	1M2.9009A	21	134	221
1M1.9010A	1M2.9010A	24	134	221
1M1.9011A	1M2.9011A	46	134	221
1M1.9012A	1M2.9012A	47	134	221
1M1.9013A	1M2.9013A	55	134	221
1M1.9014A	1M2.9014A	24	134	221
1M1.9015A	1M2.9015A	51	134	221
1M1.9016A	1M2.9016A	29	134	221
1M1.9017A	1M2.9017A	36	134	221
1M1.9018A	1M2.9018A	32	134	221
1N1.9001A	1N2.9001A	20	134	221
1N1.9002A	1N2.9002A	48	134	221
1N1.9501A	1N2.9501A	29	145	231
1N1.9502A	1N2.9502A	16	145	231
1N1.9503A	1N2.9503A	35	145	231
1N1.9504A	1N2.9504A	20	145	241
201.8002A	202.8002A	OE	OE	OE

Part Number		Caliper Clearance Guide		
Drilled	Slotted	A	B	C
201.8003A	202.8003A	OE	OE	OE
2A1.5001A	N/A	3	103	184
2A1.6001A	2A2.6001A	43	110	192
2A1.6002A	2A2.6002A	7	110	192
2A1.6003A	2A2.6003A	0	110	192
2B1.7001A	2B2.7001A	26	110	188
2B1.7002A	2B2.7002A	7	110	188
2B1.8001A	2B2.8001A	8	122	200
2B1.8002A	2B2.8002A	12	122	200
2B1.8003A	2B2.8003A	8	122	200
2B1.9001A	2B2.9001A	8	137	215
2B1.9002A	2B2.9002A	8	137	215
2C1.6001A	2C2.6001A	41	110	192
2C1.6002A	2C2.6002A	24	110	192
2C1.6004A	2C2.6004A	29	110	192
2C1.6005A	2C2.6005A	24	110	192
2C1.6006A	2C2.6006A	30	110	192
2C1.6007A	2C2.6007A	27	110	192
2C1.6009A	2C2.6009A	29	110	192
2C1.6010A	2C2.6010A	30	119	200
2C1.8001A	2C2.8001A	24	119	200
2C1.8002A	2C2.8002A	24	119	200
2C1.8003A	2C2.8003A	35	119	200
2C1.8004A	2C2.8004A	23	119	200
2C1.8005A	2C2.8005A	20	119	200
2C1.8006A	2C2.8006A	5	119	200
2C1.8007A	2C2.8007A	5	119	200
2C1.8008A	2C2.8008A	14	119	200
2C1.8009A	2C2.8009A	24	119	200
2C1.8010A	2C2.8010A	4	119	200
2C1.8011A	2C2.8011A	0	119	200
2C1.8012A	2C2.8012A	17	119	200
2C1.8013A	2C2.8013A	24	119	200
2C1.8014A	2C2.8014A	24	119	200
2C1.8015A	2C2.8015A	20	119	200
2C1.8016A	2C2.8016A	49	119	200
2C1.8017A	2C2.8017A	17	119	200
2C1.8018A	2C2.8018A	39	119	200
2C1.8019A	2C2.8019A	20	119	200
2C1.8020A	2C2.8020A	35	119	200
2C1.8021A	2C2.8021A	18	119	200
2C1.8022A	2C2.8022A	13	119	200
2C1.8024A	2C2.8024A	30	119	200
2C1.8025A	2C2.8025A	18	119	200
2C1.8026A	2C2.8026A	24	119	200
2C1.8027A	2C2.8027A	17	119	200
2C4.7001A	N/A	35	117	198
2C4.7002A	N/A	35	117	198



Part Number		Caliper Clearance Guide		
Drilled	Slotted	A	B	C
2D0.6001A		-	-	-
2D0.6002A		-	-	-
2D0.8001A		-	-	-
2E4.4001A	2E5.4001A	25	98	173
2E4.4002A	2E5.4002A	25	98	173
2E4.5001A	2E5.5001A	15	109	184
2H1.8003A	2H2.8003A	12	122	200
2H1.9001A	2H2.9001A	38	137	215
2H1.9002A	2H2.9002A	12	137	215
2M1.9001A	2M1.9001A	55	134	221
2M1.9002A	2M1.9002A	55	134	221
2P1.6006A	2P2.6006A	31,7	105,5	194,2
2P1.8001A	2P2.8001A	10	114	203
2P1.8002A	2P2.8002A	29	114	203

Part Number		Caliper Clearance Guide		
Drilled	Slotted	A	B	C
2P1.8004A	2P2.8004A	29	114	203
2P1.8005A	2P2.8005A	29	114	203
2P1.8011A	2P2.8011A	23	114	203
2P1.8012A	2P2.8012A	40	114	203
2P1.8013A	2P2.8013A	40	114	203
2P1.9001A	2P2.9001A	17	131	219
2P1.9002A	2P2.9002A	16	131	219
2P1.9003A	2P2.9003A	29	131	219
2P1.9004A	2P2.9004A	15	131	219
2P1.9005A	2P2.9005A	15	131	219
2P1.9006A	2P2.9006A	32	131	219
2P1.9007A	2P2.9007A	39	131	219
2P1.9008A	2P2.9008A	36	131	219

