



ECU Removal For:

Mercedes CLK320

Allocate a half hour towards the removal, installation and testing of the POWERCHIP. It should be done when you are not rushed for time, and can concentrate on the installation.

Tools Required.

- Phillips Head Screwdriver.
- Flat Head Screwdriver.

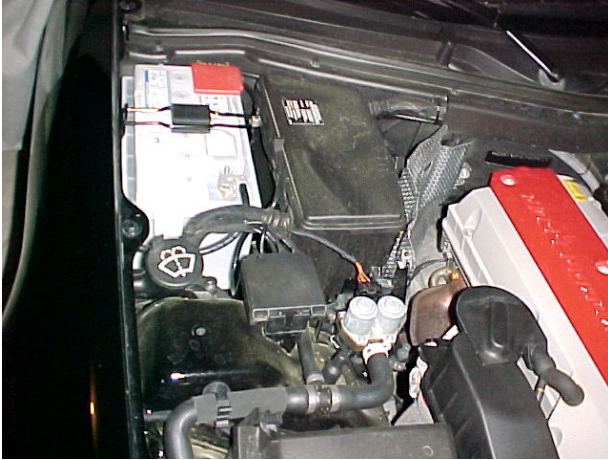
Locating & Access To ECU.

Ensure the ignition is OFF before removing ECU.

The computer is located under the bonnet in a black box, on the Passengers side of the vehicle.



Locating & Access To ECU Cont.



There are four screws holding the lid in place.

Using a Phillips head screwdriver remove the screws.



Once all screws have been removed, lift the lid exposing ecu.

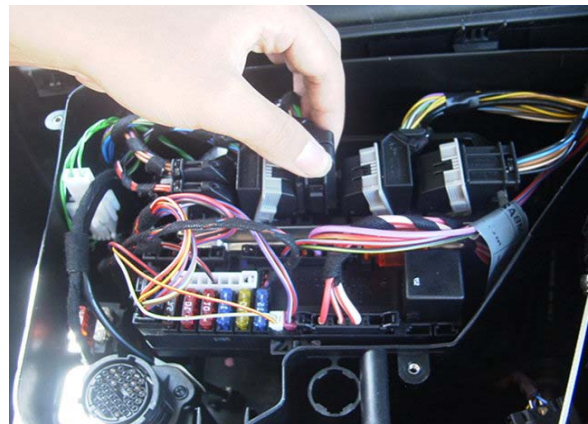
Locating & Access To ECU Cont.



The ecu is located at the far back of the box behind the fuses.

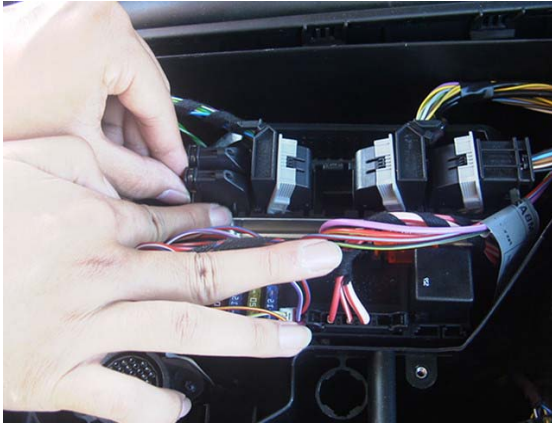


First remove the screws holding the ecu in place.

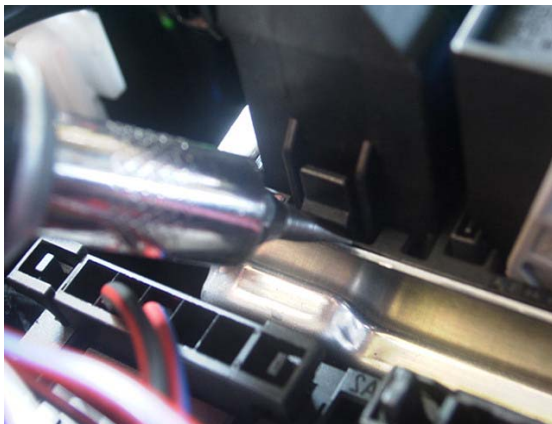


The middle plug should be removed first. Press button on side of plug and remove from ecu.

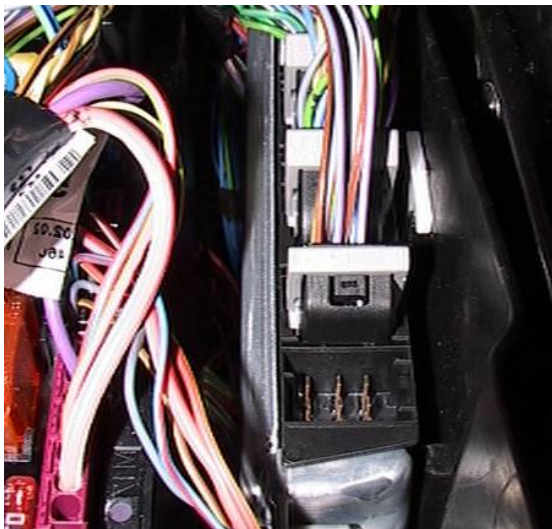
Locating & Access To ECU Cont.



Next the two plugs on the end should be removed.



For these you will need the use of a flat head screwdriver. Push button in and remove plug.

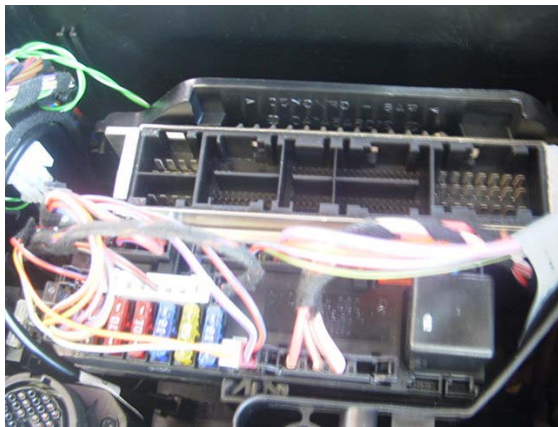


Lastly remove the three lever plugs. To remove these press button to release lever.

Locating & Access To ECU Cont.



Then to release plug from ecu pull lever down, which will lift the plug. Once the plug has been removed from the ecu it is best to lock levers back in place as to not damage the plug.



With this done the ecu should slide out.



Once ECU has been removed, place on a clean workbench. The ECU is held onto a plate via four 10mm bolts. Simply undo do these bolts. The ECU required should now be free from the plate. Note the orientation of the computer on the plate before removing.

Locating & Access To ECU Cont.



The Computer that's needs to be sent should have a sticker similar to the one in the previous pictures. **If it is not marked 0261 20X XXX, please call before sending the computer.**

As arranged this computer will now need to be packaged up in a Courier bag supplied and sent to Powerchip to be modified. Your computer will be modified and returned to you overnight, the day we receive your computer.