

Werkstattinformationssystem Display Document

Sales designation:	Vehicle ident. number:	Engine number:	Automatic transmission:	Gr.:	Entrv. Mod.Y.:	Op. no.:	
CLK 430 Cabriolet	WDB208470*	113.943	722623	91.59			
GF91.53-P-2200KA		Roll bar valve block, location/task/design/function			Full-size view	Validity OFF	Page: 2 / 3

GF91.53-P-2200KA	Roll bar valve block, location/task/design/function	12.2.98
------------------	---	---------

Models 208.435 /444 /445 /447 /448 /465 /470

GF	Roll bar valve block, location		GF91.53-P-2200-01KA
	Roll bar valve block, task	If necessary, the hydraulic cylinder should be supplied with pressurized hydraulic fluid for the manual lowering and raising of the roll bar.	
	Roll bar valve block, design	<p>The RB valve block (RB, Y57) contains two hydraulic valves, which are electronically actuated by the roll bar RB/soft top operation control module (N52):</p> <ul style="list-style-type: none"> ● Rod side valve (Y57y10) 	

wis _ □ X

Werkstattinformationssystem Display Document

Sales designation: **CLK 430 Cabriolet** Vehicle ident. number: **WDB208470*** Engine number: **113.943** Automatic transmission: **722623** Gr.: **91.59** Entrv: Mod.Y.: Op. no.:

GF91.53-P-2200KA **Roll bar valve block, location/task/design/function** Full-size view validity **OFF** Page: **3 / 3**

		<p>two hydraulic valves, which are electronically actuated by the roll bar RB/soft top operation control module (N52):</p> <ul style="list-style-type: none"> ● Rod side valve (Y57y10) ● Piston side valve (Y57y11) <p>The valves consist of three connections each and two applied positions (3/2-way valve).</p>
	Roll bar valve block, function	<p>When the Y57y10 is actuated the lock pawls are swiveled out from the gear rack and the roll bar lowered.</p> <p>If the Y57y10 and Y57/11 are actuated simultaneously the lock pawls are swiveled out from the gear rack and the roll bar raised.</p>

Add. Functions Document Functions What is new? Document: 1 / 1 Level: 6 Menu Help Previous Screen

Start **wis** Benzworl... clk 430 c... << 16:38

wis

GF91.53-P-2100KA Hydraulic cylinder roll bar, location/task/design/function Normal view validity OFF Page: 2 / 2

Models 208.435 /444 /445 /447 /448 /465 /470

GF	Hydraulic cylinder roll bar, location		GF91.53-P-2100-01KA
	Hydraulic cylinder roll bar, task	<p>Lowering roll bar: at manual actuation, soft top operation and after a crash deployment.</p> <p>Raising roll bar: at manual actuation and soft top operation.</p>	
	Hydraulic cylinder roll bar, design	Double acting differential cylinder (rod and piston-side pressure connection).	
	Hydraulic cylinder roll bar, function	<p>At pressure application on the piston side or on both sides the hydraulic cylinder rod is extended: The roll bar is raised (for manual actuation only).</p> <p>At pressure application on the rod side the hydraulic cylinder rod is retracted: The roll bar is lowered.</p>	

Start wis Benzworl... clk 430 c... 16:43

GF91.53-P-3000KA	Roll bar hydraulics, function	17.2.98
------------------	-------------------------------	---------

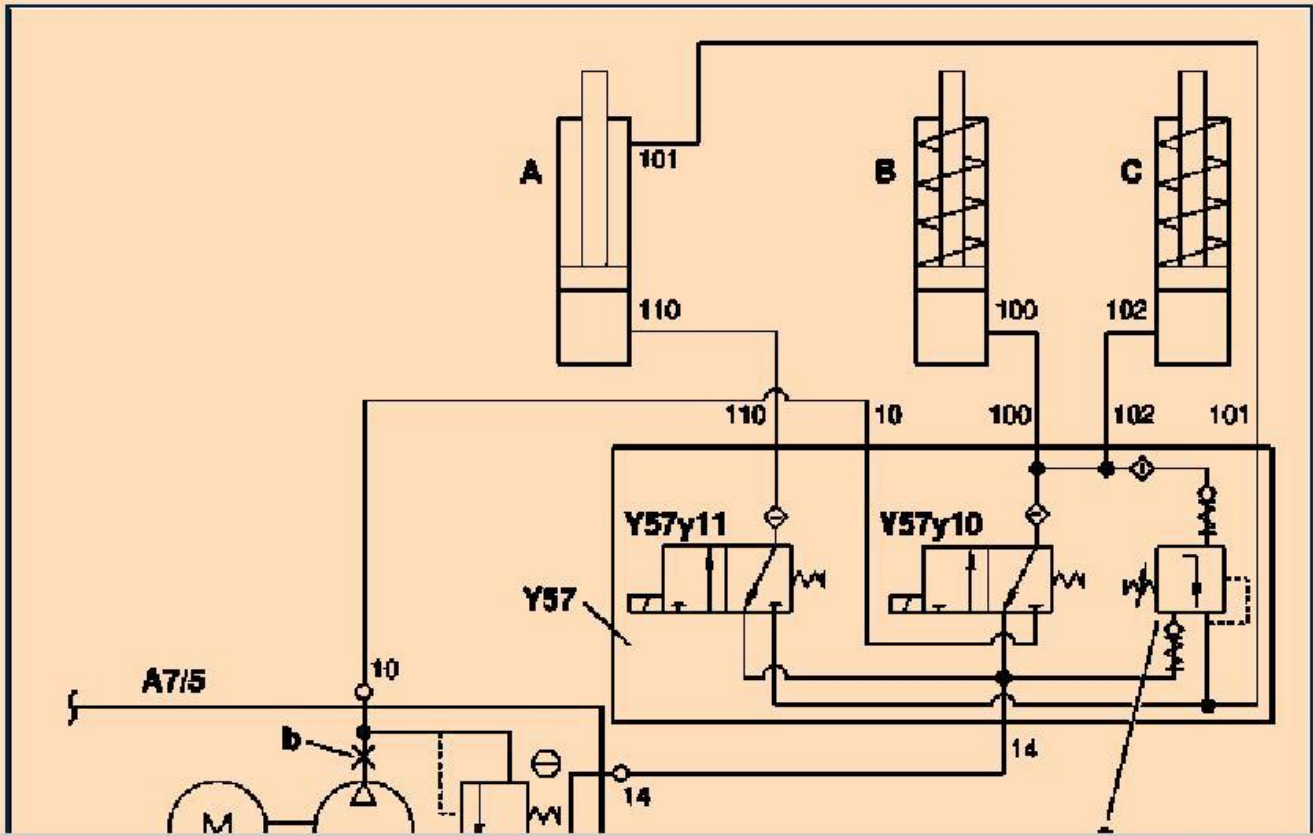
Models 208.435 /444 /445 /447 /448 /465 /470

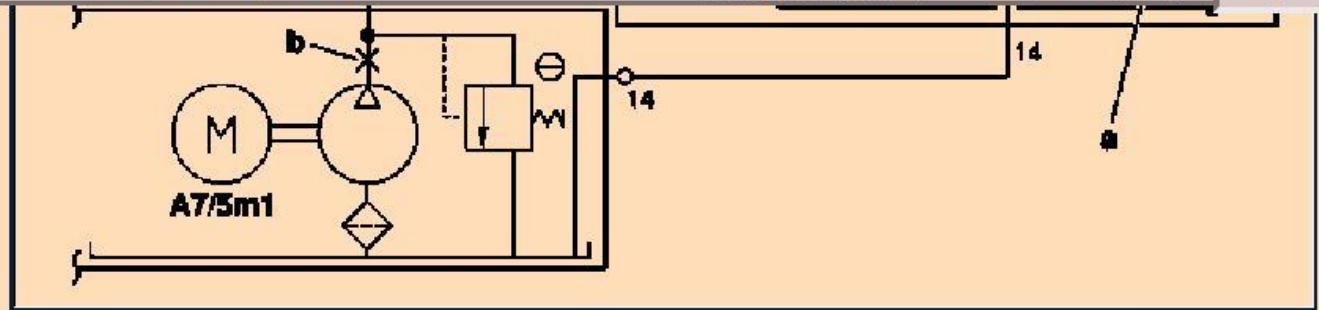
Depiction of lowered roll bar

- A Hydraulic cylinder roll bar
- B, C Hydraulic cylinder lock pawls left/right
- A7/5 Roll bar RB/soft top operation hydraulic unit
- A7/5m1 Engine

- Y57 Roll bar valve block
- Y57y10 Rod side valve
- Y57y11 Piston side valve

- a Pressure control valve
- b Test connection for diagnostics pressure measurement





P91.53-2002-06

Raise roll bar (for manual actuation only)

The hydraulic unit's motor (A7/5m1) starts to run, the rod side valve (Y57y10) and piston side valve (Y57y11) switch:

The two lock pawls have pressure applied to them and are thus swiveled away from the gear rack. The roll bar's hydraulic cylinder has pressure applied to it at both the piston and rod sides and is then raised.

Lower roll bar

The hydraulic unit's motor (A7/5m1) starts to run, the rod side valve (Y57y10) switches:

The two lock pawls have pressure applied to them and are swiveled away from the gear rack. The roll bar's hydraulic cylinder has pressure applied to it at the rod side and is then lowered.

GF	Roll bar manual actuation, function	GF91.59-P-2000KA
GF	Roll bar/soft top operation control module, location/task/design/function	GF77.39-P-3100KA
GF	Roll bar/soft top operation hydraulic unit, location/task/design/function	GF77.30-P-3100KA