

# **Repairing Keyless Go Door Handle**

## **Part 1**

( by Tim Eng 11 Nov 2011)



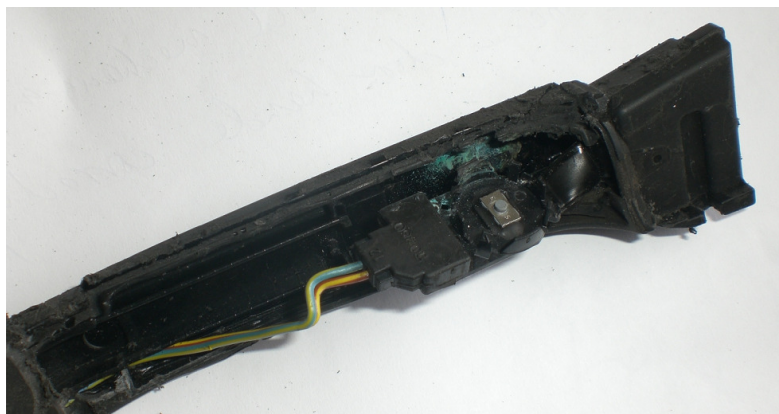
I have a W209 CLK that has the Keyless Go System. This is a documentation of how I repaired both my faulty door handles.

### **Attempt these at your own risk.**

As I figured I have nothing to loose. The faulty handles were no use to me and in the worst case I could order new ones if things turned to custard.

*It was a trial and error process and I now have both my doors handles working... ie I can lock and unlock from both sides of my CLK doors.*

Here are some pictures



*You can see the small microswitch ...that is usually the faulty component.*



*See the greenish corrosion above*



*Corrosion also attacks some of the copper tracks*

*Remove the top of the handle...the chrome bit by carefully prying at the gaps. Once remove you will see the black innards inside. This is made of plastics, rubber and silicone. This is meant to be watertight, but obviously they are not. Water is getting in and corroding the micro switches inside. Capillary actions? Who knows... Just be more careful when hosing around your door handles when you are next washing your car.*

*You can remove black innard by prying it with a phillip screwdriver as above. Remember to put some duct tape to protect your painted handle. You might have to apply a far bit of force. I found it easier for my second handle as I already know how to remove it.*





*Next depending on whether it is the lock microswitch faulty ( at the end of the black innards); or the unlock ( middle of the black innards); you will need to cut thru one or both .*

I use a combination of mini hacksaw, box cutter and mini grinder to get to the microswitches... see some *photos below for inspiration.*

