

Headlight Removal & Installation: MBZ W209 (CLK)

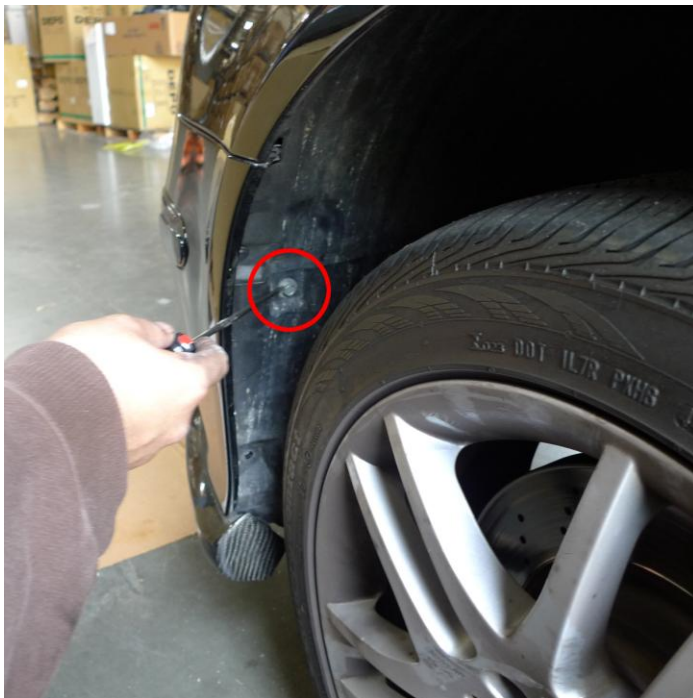
DISCLAIMER

Buyer assumes any and all risk and liability from the installation and use of this product. Seller, author, or any of their affiliates assume no liability for injury, loss, incidental or consequential damages deriving from installation and/or use of this product.

Tools Required:

- 8mm or 5/16" socket
- 10mm socket
- 3/8" or 1/4" socket extension
- 3/8" or 1/4" drive socket wrench
- Flathead Screwdriver
- Phillips Screwdriver

Step 1: First you must remove two clips (numbered 1 and 2) inside the tire-well for each front-side tire-wells.



Step 2: Then unscrew and remove the **10mm** screw inside the tire-well with a 10mm socket. The 10mm screw is located to the lower right of "clip #2" in the picture example from **Step 2**. Do this for each front-side tire-well.

Step 3: There still is one more screw hidden behind the mud-guard in the tire-well. Fold the plastic mud-guard back to reveal this 8mm screw that is in between the lining of your car's fender and bumper.

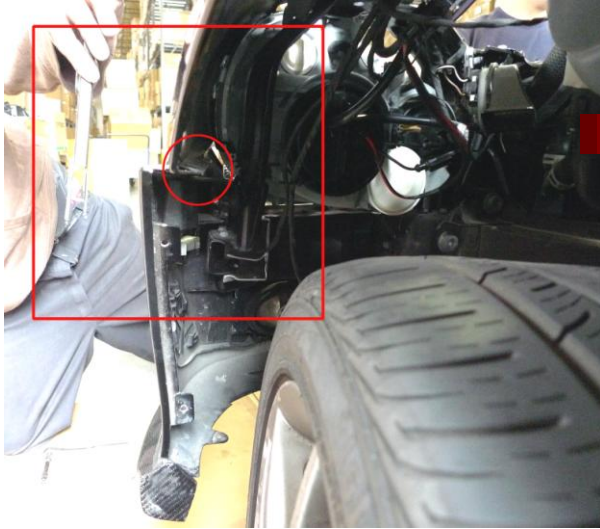
**Turn the tire away from you, so that you can create an easier accessing and free up workable space.*



Step 4: Remove “Mud-guard” by unscrewing three 8mm screws that is similar to the one that was found in the tire-well from *Step 3*.



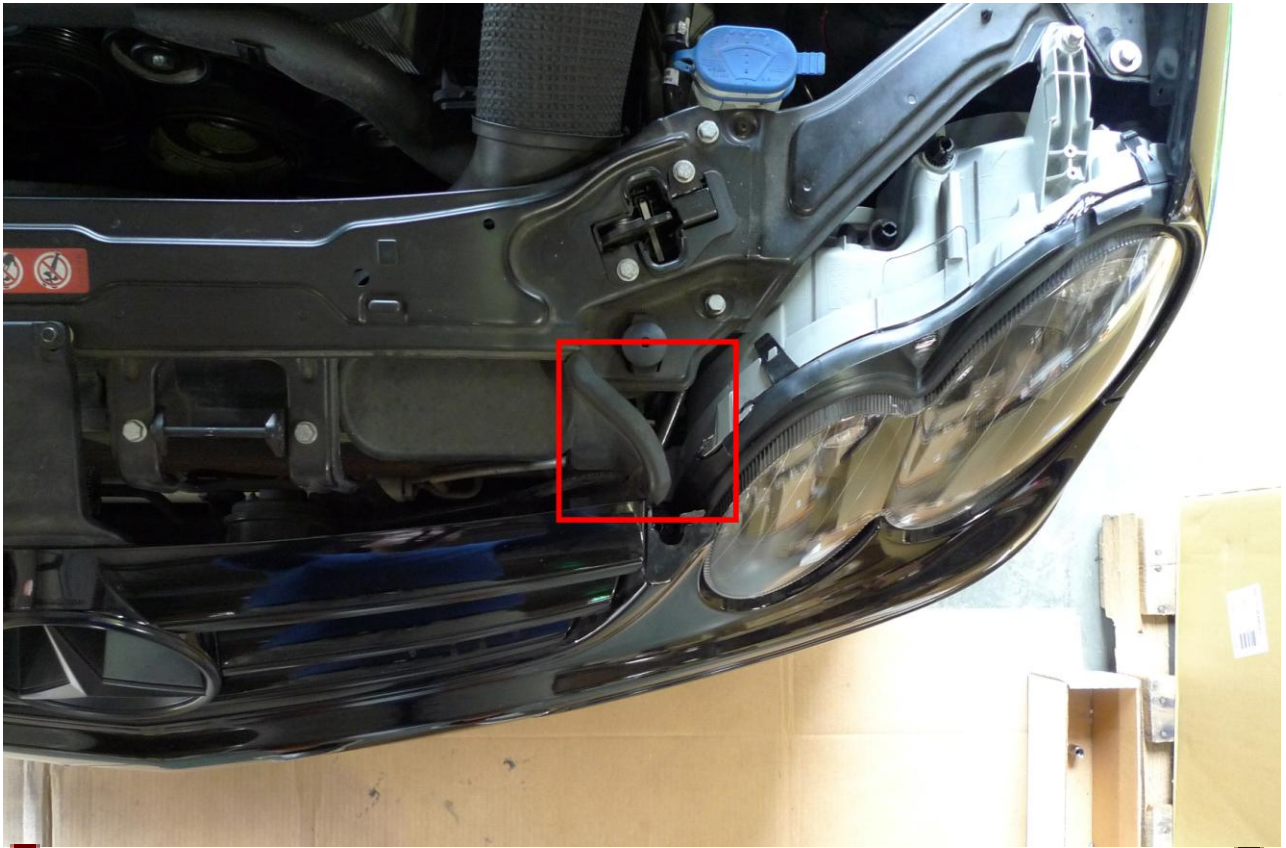
Step 5: Once you have removed the mud-guard, you will need to remove the “metal clip” that is conjoining the bumper to the fender. You must pull the pins off of the metal clip first before removing it. There is one metal clip on each front-side tire-well.



Step 6: Once the metal clips have been removed, you must unscrew two 8mm screws from the top of your grille.



Step 7: Next, you must unscrew the 8mm screws that is in between your Headlight and Grille. There is one 8mm screw on each side of the Grille. *Please be sure to not confuse the Headlight mount screw with the 8mm screw that is in between the Grille and the Headlight.*



Step 8: After you have removed screws/clips from the top-side of your car, you must unscrew the 8mm screws that are hidden below and behind your car's Bumper and Grille. There will be an opening for your screwdriver on each corner. *Please be mindful of where your unloosened screws are. Try not to let the unloosened screw drop into your car's interior bumper lip.*



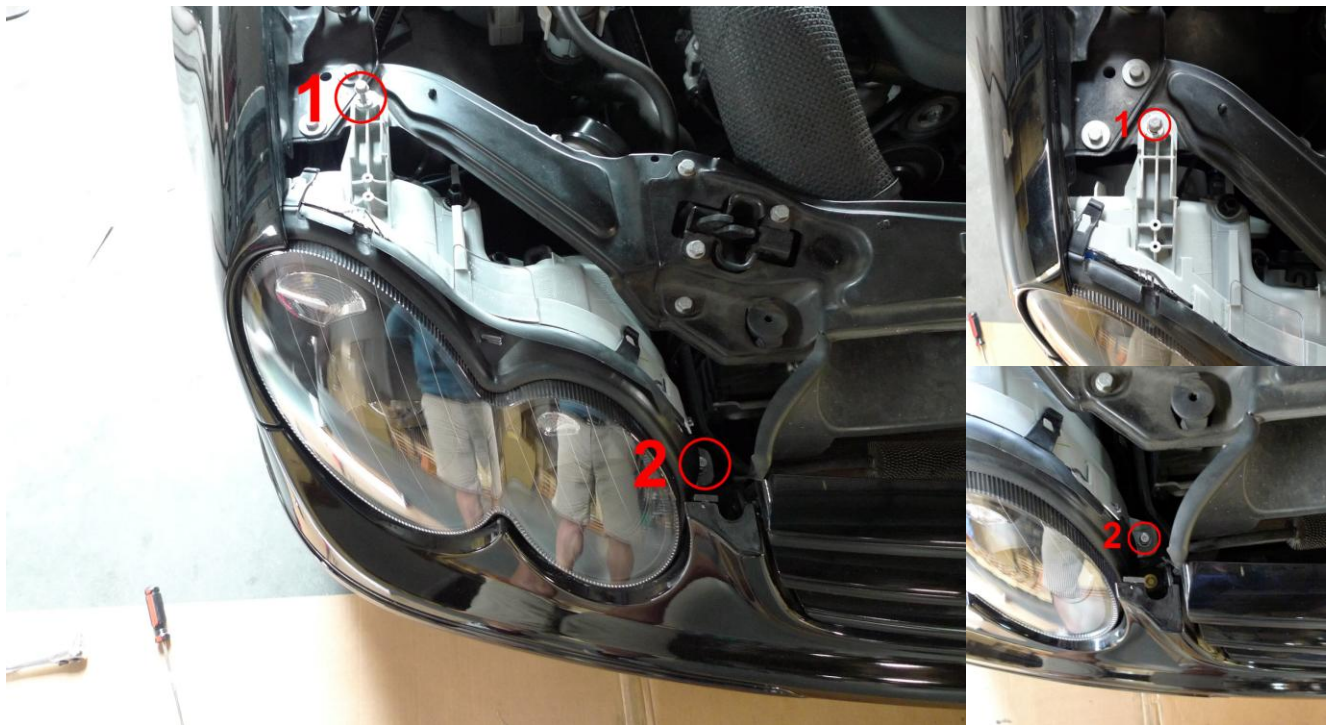
Step 9: Next, you will need to remove six clips underneath your car's bumper. Once you have done this, you should be able to remove your car's bumper. Slowly and carefully, from one fender-end of your bumper to the other, pull the bumper off of your car's frame.



Step 10: With the bumper out of your way, you will now be able to see the last 8mm screw for your Headlights on each side of your car's fender.



Step 11: Remove two 8mm screws on top of the Headlight by unscrewing them with an 8mm socket.

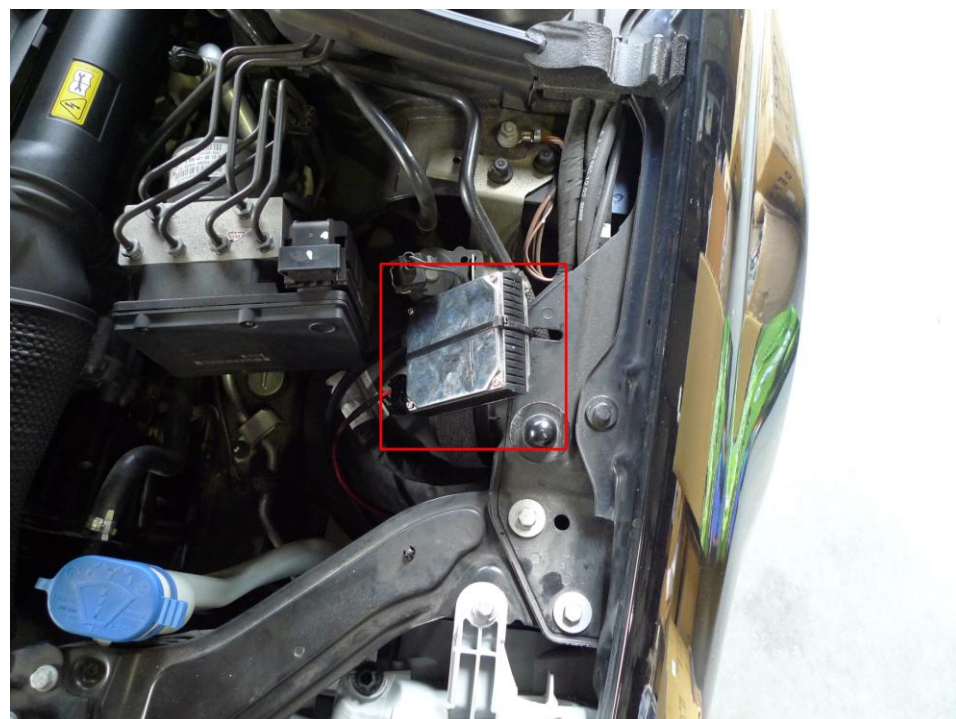
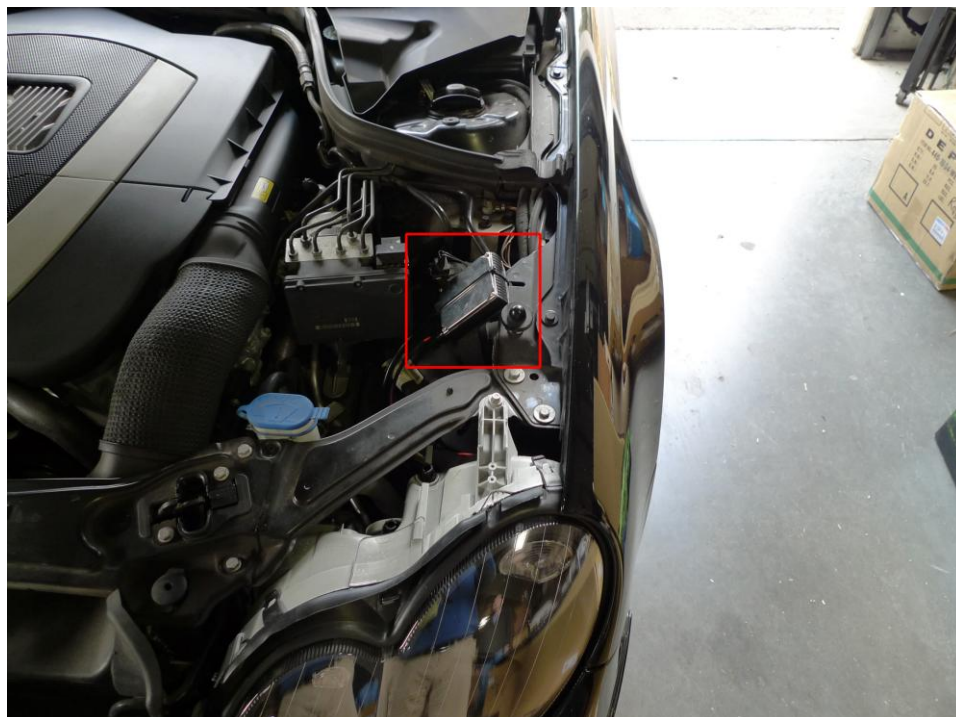


Step 12: With all the three Headlight mounting screws removed, you will be able to remove your Headlight from your car. When removing your Headlights, please be mindful of where the adapters are and unplug them as you pull your Headlights out of your car's frame.



Step 13: If you have purchased the headlight without Xenon HID system included, simply reverse the process above to install the new headlight in. If you have purchased the version with Xenon HID included, it is the same exact procedure except you need to follow the below Step 14 to secure the ballast in a proper location. Disregard Step 14 if you did not purchase the headlight with Xenon HID included.

Step 14: If your car Headlights comes with HID Ballast, then you must secure it in a safe place around your engine compartment. You will try to position the HID Ballast away from plastic surface and use zip-tie to secure it on car's chassis which is more stable and strong. Below is an example of a suitable place to secure your HID Ballast. You may use a zip-tie to secure your HID Ballast.



Step 15: After you have properly secured “Headlights & *HID Ballast mounting bracket*” to your car, you should test the headlights. Test all features BEFORE you put re-install everything back to the car.

- When your headlight switch is between Auto & Parking lights) that is “Position 0.” Your headlights should be off.
- Next, switch it to “Position 1,” also known as Parking lights, to see if your “parking light” should be visible (it is the small light nearest to the car’s grille).
- Lastly, switch the dial to “Position 2” to see if your “low beam light” is functioning. And push the light handle forward to test high beam.

Step 16: Enjoy your newly installed Headlights!



