

Document number: pe54.21-p-2106-97bf

Document title: Wiring diagram of front SAM control unit with fuse and relay module (N10/1)

Code:	Designation:	Position:
A0	Color code key	
A51	Headlamp range adjustment rear axle sensor	26L
A51	Headlamp range adjustment rear axle sensor	53L
A52	Front axle sensor (headlamp range adjustment)	29L
A52	Front axle sensor (headlamp range adjustment)	56L
A52	Front axle sensor (headlamp range adjustment)	28L
A52	Front axle sensor (headlamp range adjustment)	55L
E1	Left front lamp unit	12L
E1	Left front lamp unit	39L
E1e1	Left high beam	10L
E1e2	Left low beam	11L
E1e3	Left standing and parking lamp	13L
E1e5	Left turn signal lamp	13L
E1l1	Left high beam solenoid	42L
E1m1	Left headlamp range adjustment motor	41L
E1m2	Left dynamic curve illumination motor	42L
E1n1	Xenon headlamp control unit	
E1n2	Xenon headlamp ignition module	39L
E1n3	HRA [LWR] power module	39L
E1n4	Xenon headlamp supply module	40L
E2	Right front lamp unit	16L
E2	Right front lamp unit	33L
E2e1	Right high beam	14L
E2e2	Right low beam	15L
E2e3	Right standing and parking lamp	17L
E2e5	Right turn signal lamp	16L
E2l1	Right high beam solenoid	36L
E2m1	Right headlamp range adjustment motor	35L
E2m2	Right dynamic curve illumination motor	36L
E2n1	Xenon headlamp control unit	
E2n2	Xenon headlamp ignition module	32L
E2n3	HRA [LWR] power module	33L
E2n4	Xenon headlamp supply module	34L
E5/1	Left front fog lamp	7L
E5/2	Right fog lamp	8L
F32	Front prefuse	2L
F32f4	Prefuse 4	1K
F32f6	Prefuse 6	2K
N10/1	Front SAM control unit with fuse and relay module	4A

Document number: pe54.21-p-2106-97bf

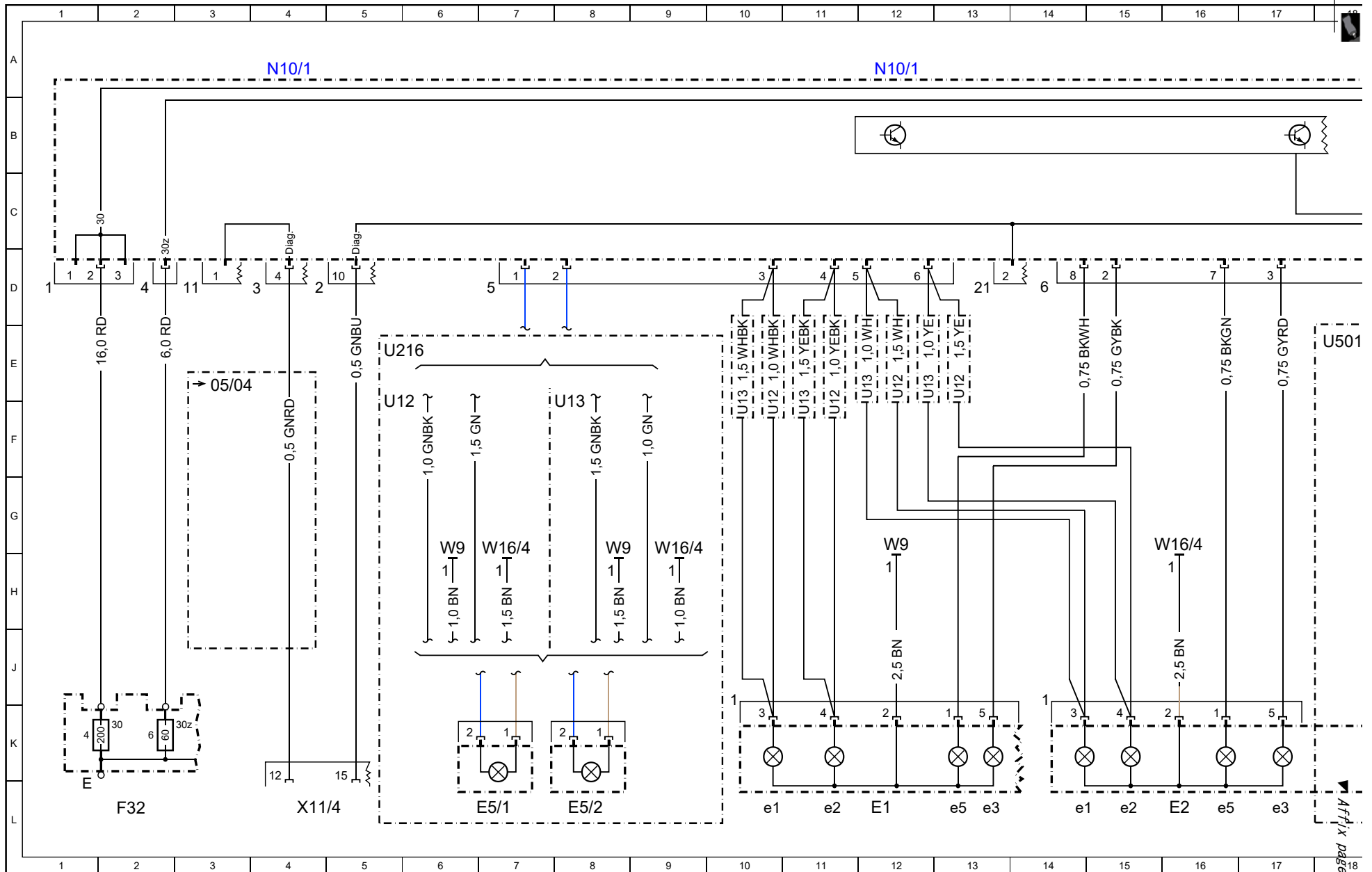
Document title: Wiring diagram of front SAM control unit with fuse and relay module (N10/1)

Code:	Designation:	Position:
N10/1	Front SAM control unit with fuse and relay module	12A
N10/1	Front SAM control unit with fuse and relay module	21A
N10/1	Front SAM control unit with fuse and relay module	28A
N10/1	Front SAM control unit with fuse and relay module	34A
N10/1	Front SAM control unit with fuse and relay module	52A
N10/1	Front SAM control unit with fuse and relay module	47A
N10/1f51	Fuse 51	20B
N10/1kP	Circuit 15 (2)/spare 1 relay (changeover contact)	19A
N71	Headlamp range adjustment control unit	46L
U12	Valid for left-hand drive vehicles	5F
U12	Valid for left-hand drive vehicles	11F
U12	Valid for left-hand drive vehicles	10F
U12	Valid for left-hand drive vehicles	12E
U12	Valid for left-hand drive vehicles	13E
U13	Valid for right-hand drive vehicles	8F
U13	Valid for right-hand drive vehicles	10F
U13	Valid for right-hand drive vehicles	11F
U13	Valid for right-hand drive vehicles	12E
U13	Valid for right-hand drive vehicles	13E
U215	Valid for CLK 63 AMG, code P98	22F
U215	Valid for CLK 63 AMG, code P98	48G
U216	Valid for all except CLK 63 AMG, code P98	5E
U216	Valid for all except CLK 63 AMG, code P98	25F
U216	Valid for all except CLK 63 AMG, code P98	51G
U501	Valid for xenon headlamps	18E
U501	Valid for xenon headlamps	31H
U501	Valid for xenon headlamps	37E
U797	Valid without dynamic curve illumination	18E
U797	Valid without dynamic curve illumination	
U803	Valid for dynamic curve illumination	31H
U803	Valid for dynamic curve illumination	43H
U803	Valid for dynamic curve illumination	38E
W16/4	Ground (right assembly compartment, power ground)	9H
W16/4	Ground (right assembly compartment, power ground)	7H
W16/4	Ground (right assembly compartment, power ground)	16G
W16/4	Ground (right assembly compartment, power ground)	39F
W16/4	Ground (right assembly compartment, power ground)	40F
W9	Ground (left front, at lamp unit)	6H
W9	Ground (left front, at lamp unit)	8H

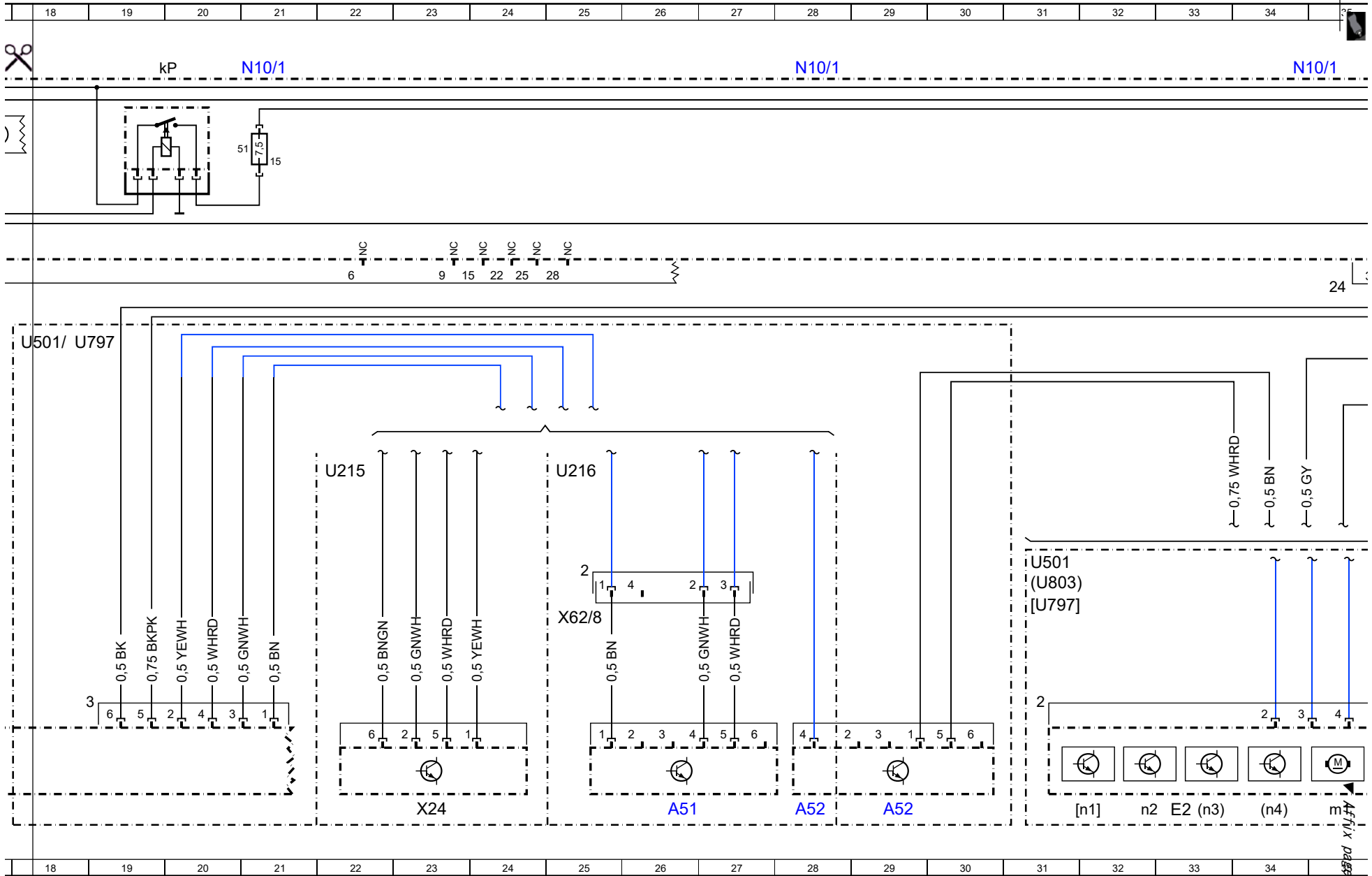
Document number: pe54.21-p-2106-97bf

Document title: Wiring diagram of front SAM control unit with fuse and relay module (N10/1)

Code:	Designation:	Position:
W9	Ground (left front, at lamp unit)	12G
X11/4	Data link connector	4L
X24	Headlamp harness connector	23L
X24	Headlamp harness connector	50L
X62/8	Rear axle multiple circuit junction connector	25H
X62/8	Rear axle multiple circuit junction connector	52H
Z3	Tml. 15 connector sleeve	44H
Z3	Tml. 15 connector sleeve	39F
Z36/12	Headlamp range adjustment (HRA [LWR]) control bus connector sleeve	38F
Z36/12	Headlamp range adjustment (HRA [LWR]) control bus connector sleeve	41F



Affix page 2 here



Out here

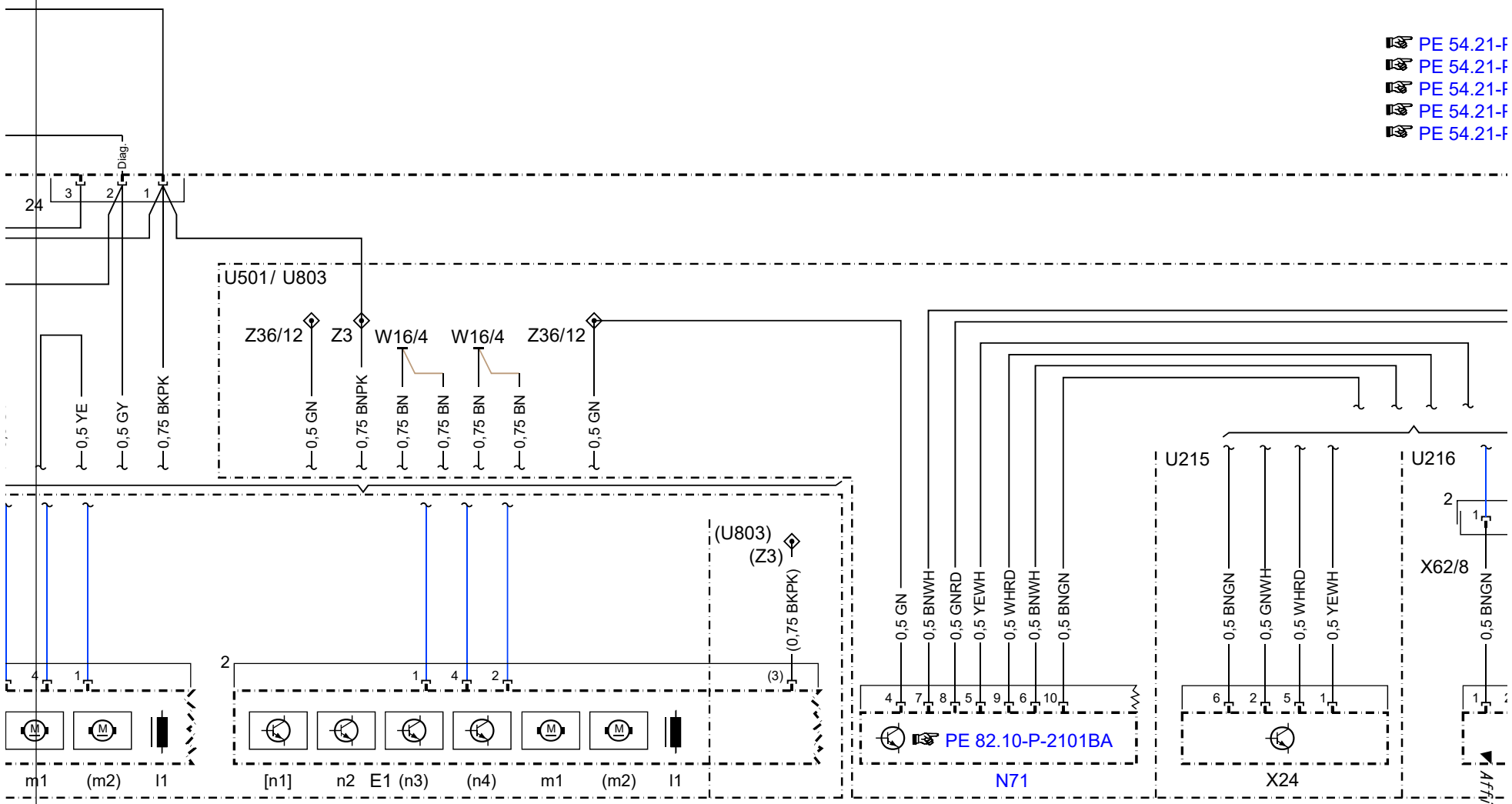
Affix page 3 here



N10/1

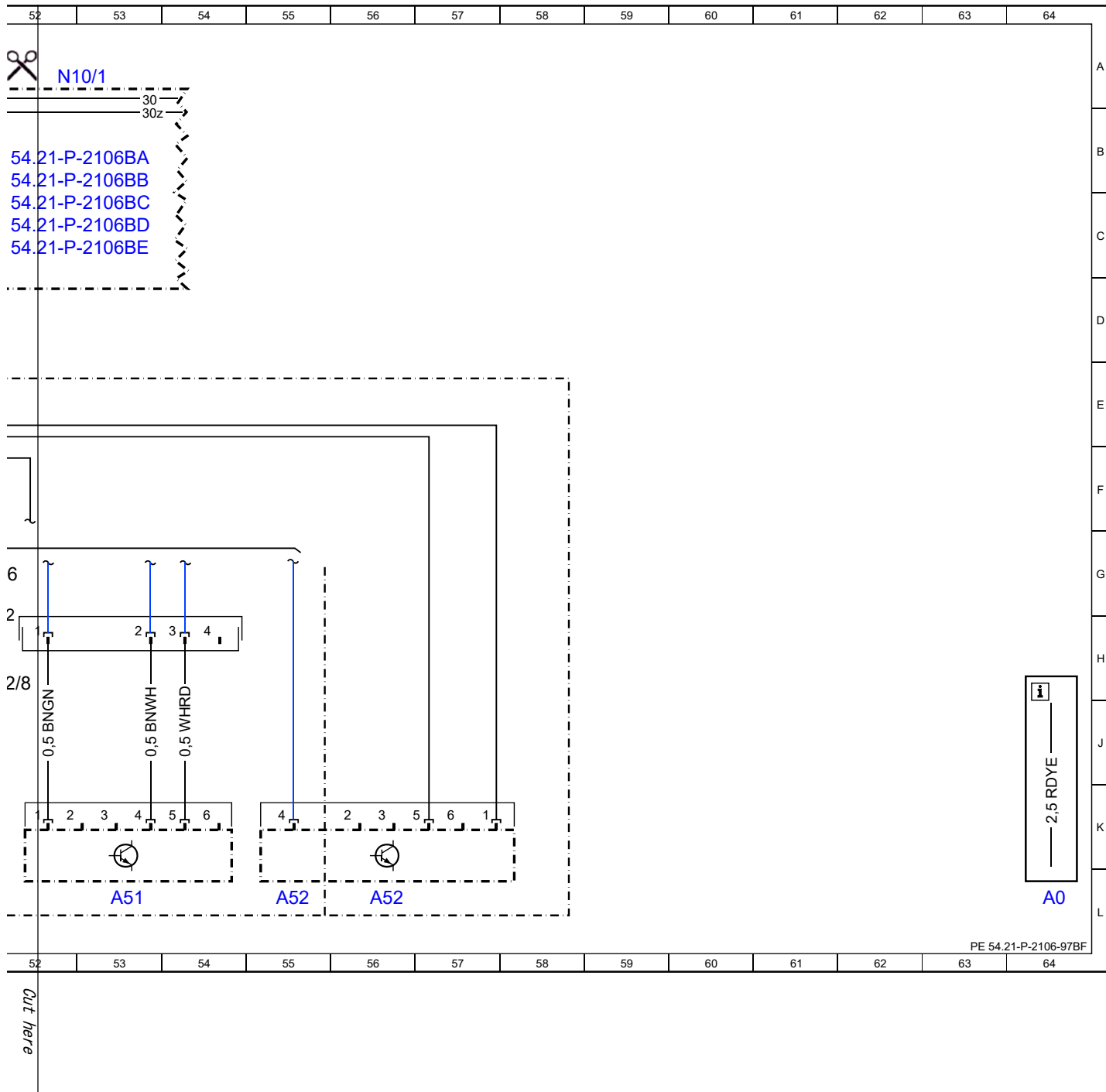
N

- PE 54.21-F
- PE 54.21-F
- PE 54.21-F
- PE 54.21-F
- PE 54.21-F



Out here

Affix page 4 here



PE 54.21-P-2106-97BF