



- Newsfeed
- Forums
- Gallery
- Members
- Tools
- Marketplace
- New Posts

Antique-A...

Mercedes-Benz Owners
 Start Your 3-Month Trial of mbrace® Today!
 Sign up for safety and security features

MBWorld.org Forums > Mercedes-Benz Sedans > C-Class (W204)
 How to remove visor clip

Welcome, **Antique-Ace**.
 You last visited: Today at 10:03 AM
 Private Messages: Unread 0, Total 0.

- User CP
- FAQ
- Community
- Insurance
- New Posts
- Search
- Quick Links
- Vendor Directory
- Log Out

Notices

Stay up to date on the latest Mercedes brand news and forum updates. [Follow MBWorld on Facebook](#)

C-Class (W204) 2008-Present: C180K, C200K, C230, C280, C300, C350, C200CDI, C220CDI, C320CDI

How to remove visor clip

POST REPLY

0
 0

- LinkBack
- Thread Tools
- Search this Thread
- Rate Thread
- Display Modes

07-11-2012, 05:53 PM

#1

IGB
 Senior Member
 Join Date: Apr 2010
 Location: LA LA Land
 Posts: 325
 Drives: '08 C300 MM Pano

How to remove visor clip

Wondering if anyone has had any luck pulling this piece down... It looks as if there is a trim/frame around the actual J-hook piece that holds the sun visor.



The arrow is pointing in the forward direction. And the letters are just in case you need some reference to describe where to pull/push/poke/squeeze...

But if you prefer a picture without any distractions, then I've got one for you too (Hahaaa)



I've had my Radar detector for over a year now, and two tickets later ((1) forget to put it up and (2) was going on a short trip and didn't think I'd get tagged), I am yet to hard wire it. I've been wanting to tap into the visor clip as a power source since its right where I plan on mounting my Escort.

I've tried to pull down on that piece but obviously if there is any way to unclip it/not force it/not break it, that would be ideal.

Thanks in advance for any tips.

QUOTE OFF

11-17-2013, 04:07 AM

#2

MurderedC300

Junior Member



Join Date: Dec 2012
Location: Massachusetts, USA
Posts: 55
Drives: 2011 C300 4MATIC SPORT

Were you ever able to figure out how to remove this? I am in the same situation of not wanting to break it trying to figure out how to remove it...

QUOTE OFF

11-17-2013, 02:56 PM

#3

IGB

Senior Member

Join Date: Apr 2010
Location: LA LA Land
Posts: 325
Drives: '08 C300 MM Pano

Actually, yes I did... I also took a few pictures... I'll locate those this evening and post a quick write up.

QUOTE OFF

11-18-2013, 12:37 AM

#4

MurderedC300

Junior Member



Join Date: Dec 2012
Location: Massachusetts, USA
Posts: 55
Drives: 2011 C300 4MATIC SPORT

Quote:

Originally Posted by **IGB**
Actually, yes I did... I also took a few pictures... I'll locate those this evening and post a quick write up.

awesome, thanks

QUOTE OFF

11-19-2013, 07:25 PM

#5

IGB

Senior Member

Join Date: Apr 2010
Location: LA LA Land
Posts: 325
Drives: '08 C300 MM Pano

Sorry for the delay, but here we go. Its actually pretty simple once you see the insides of it.

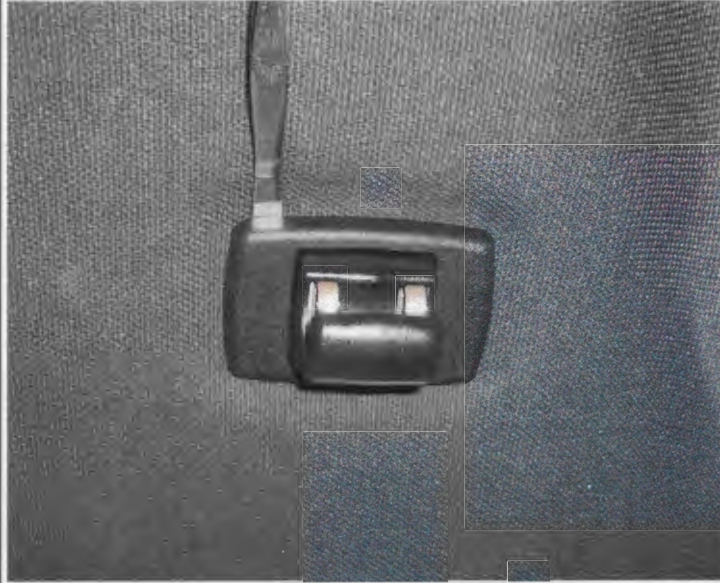
Disclaimer: As is always the case, you agree that you are doing this on your own, the events during which and the possible consequences including injuries to you and/or anyone else, and/or damages to your vehicle or any of its components are your own responsibility and no one else's, ..., blah blah, ... these steps are provided for entertainment purposes only...

Tools needed:

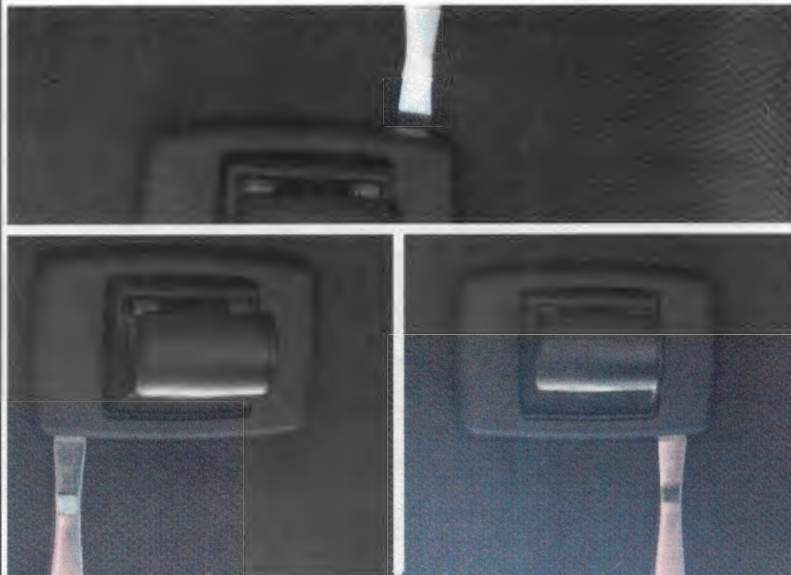
A tool with a thin flat tip, a medium sized flat-head screwdriver would be ideal.

Step 1

Insert the flat tip of the tool under the corner of the frame exactly as shown in the image below, and pull down on its handle until you hear a click.

**Step 2**

Repeat the same process for the remaining 3 corners while minding the location and direction of the tool.



The goal here is to unclip the frame off by snapping its 4 corners off at the locations indicated by the arrows.

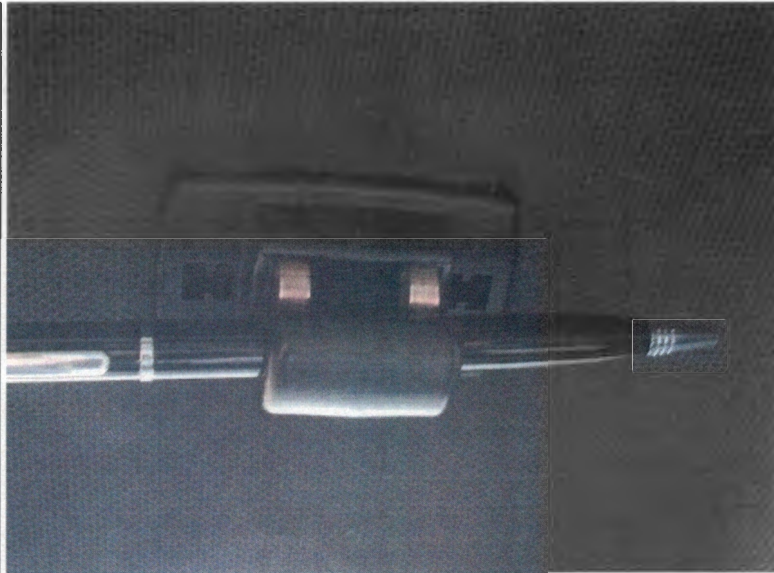


The two rods that you see protruding upwards had so significance in the previous step but you will see in the next image how they play a role in holding the next part in its place.



Step 3

While it is clear that I am using a pen, this step is going to require more force than any pen can handle. (I only used the pen for illustration and instead, I used my thumbs but I could feel my right thumb was sore for a few days later). You should use a screwdriver where you insert the shaft of the screwdriver onto the hook part of the clip and use that for leverage to pull down hard on the part to free it from the clip.

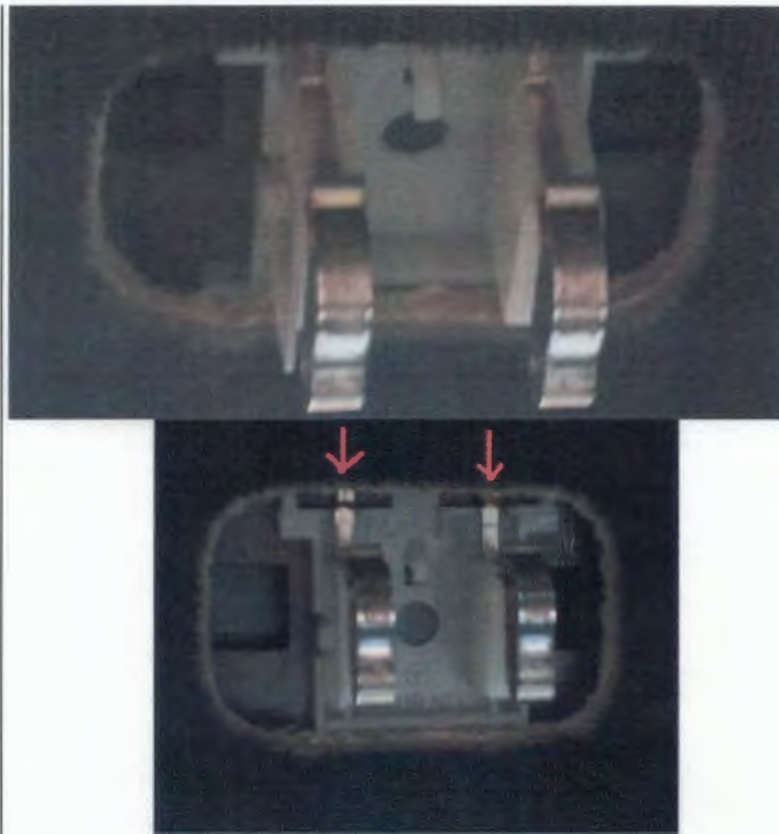


Ideally, if you can slightly push (slide the part) towards the front of the car and then pull down, it might get freed easily but either way, it will require some force to come off.

This is what it looks like above the part we can normally see.



And this is what is left in that spot where the visor clip used to be:

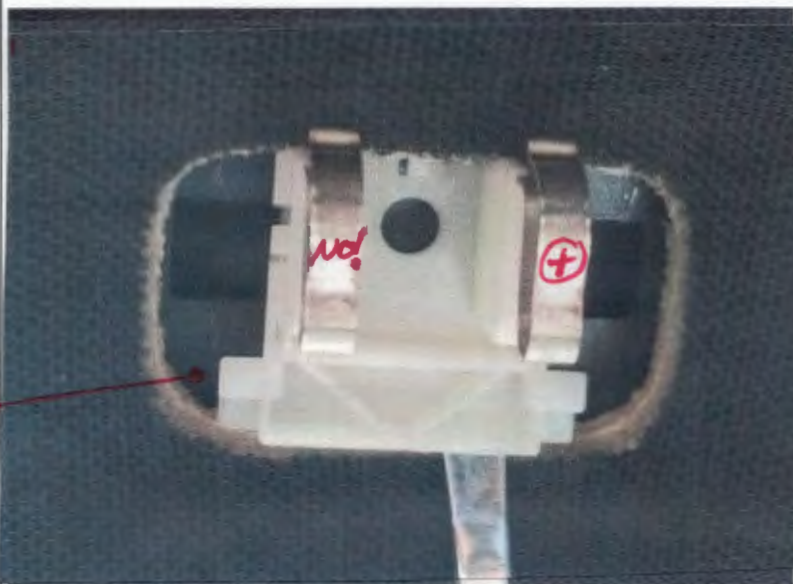


The red arrows that you see are indicative of the direction where the two electric wires coming into the contacts come from. Whatever you do, don't pull down on that end.

Depending on what it is you are trying to do, you maybe able to finalize some sort of connection with this part as it is here; otherwise, go to the next step.

Step 4

You can see that there is some room for back and forth play on this part. But as previously cautioned, nothing can be gained by sliding it forward instead at this point in time, and if you need to get it out from under the headliner, then slide it back as far as it will go, and then use the same flat-head pry tool you used earlier to slip underneath this part, and leverage it out from front downward and out.



*⊕
⊖ not
ground*

Ⓛ

Ⓡ

⊕ USE BODY FOR GROUND.
⊖

Once you've done that you can now slightly slide in forward to expose the rest of it an a bit more of the wires coming into it. Only slide it forward a little at a time until you can feel some resistance. This is as far as mine will come out:



For reassembly, and once you are done wiring and testing your connection, reverse the steps you followed to get to this point.

Important Note: Depending on what it is you are connecting to these terminals, you should keep in mind that while power is not continuous to this connection, it does in fact stay on for several minutes of you turning the ignition off and removing the key. This, and a weak battery may leave you without enough current to crank to a start.

Last edited by IGB; 11-19-2013 at 07:38 PM.

QUOTE OFF

11-19-2013, 08:51 PM

#6

MurderedC300

Junior Member



Join Date: Dec 2012
Location: Massachusetts, USA
Posts: 55
Drives: 2011 C300 4MATIC SPORT

Awesome write up! I really appreciate it! Thank you!

QUOTE OFF

11-20-2013, 12:56 PM

#7

IGB

Senior Member

Join Date: Apr 2010
Location: LA LA Land
Posts: 325
Drives: '08 C300 MM Pano

Quote:

Originally Posted by **MurderedC300**
Awesome write up! I really appreciate it! Thank you!

You're welcome. Glad I could help!

QUOTE OFF

8+1 0 Tweet 0

POST REPLY

Tags

Edit Tags

190e, c300, clip, clips, installation, mercedes, removal, remove, sun, suncisor, visor, w163, w204, w211, w212

Certified Pre-Owned Vehicles
with 2.99% APR+ Unlimited Mileage Warranty **
Only at your authorized Mercedes-Benz dealer

Quick Reply