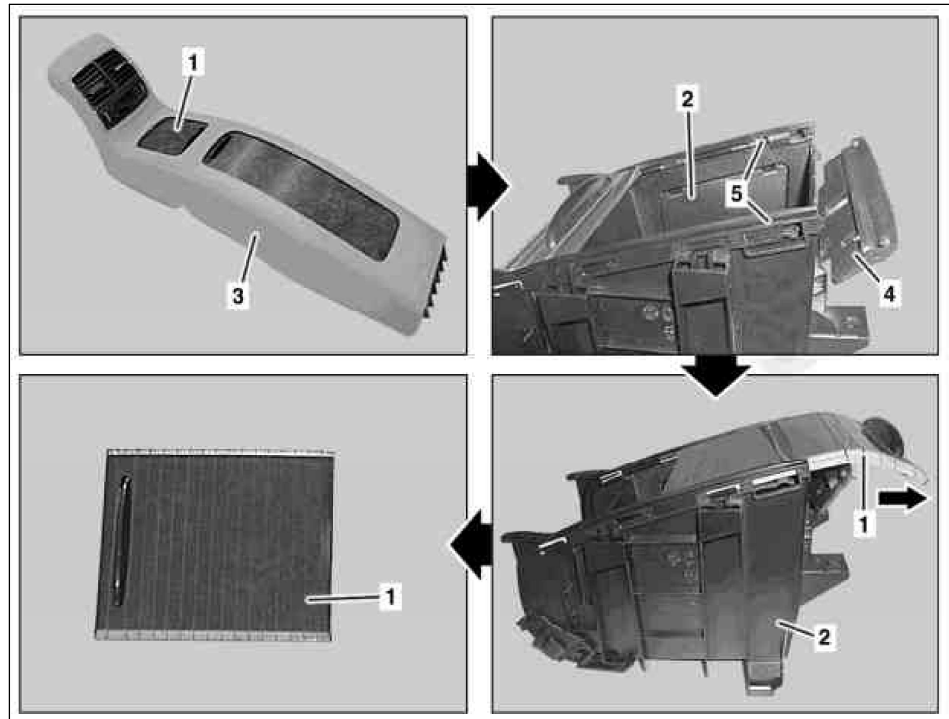


MODEL 219.3

- 1 Roller blind
- 2 Front stowage compartment
- 3 Rear center console.
- 4 Stop
- 5 Guide rails



P68.20-3289-06

☒ ☒	Remove/Install		
1	Remove front stowage compartment (2) in center console (3)		AR68.20-P-2460TX
2	Unclip stop (4) from front stowage compartment (2) in upper area and bend toward rear until roller blind (1) can be pulled out of guide rails (5)		
3	Pull roller blind (1) out of guide rails (5) in direction of arrow		
4	Install in the reverse order		