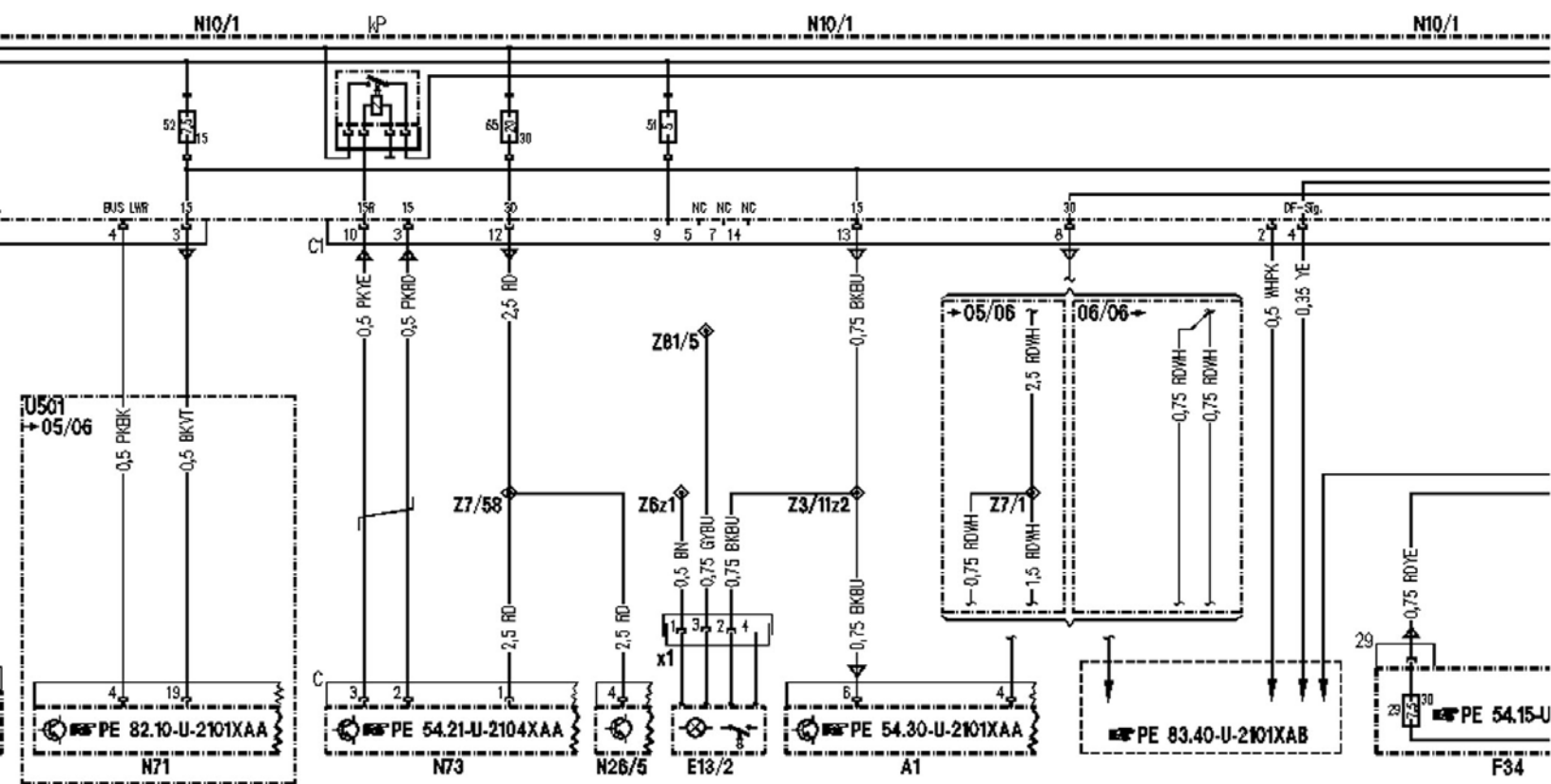


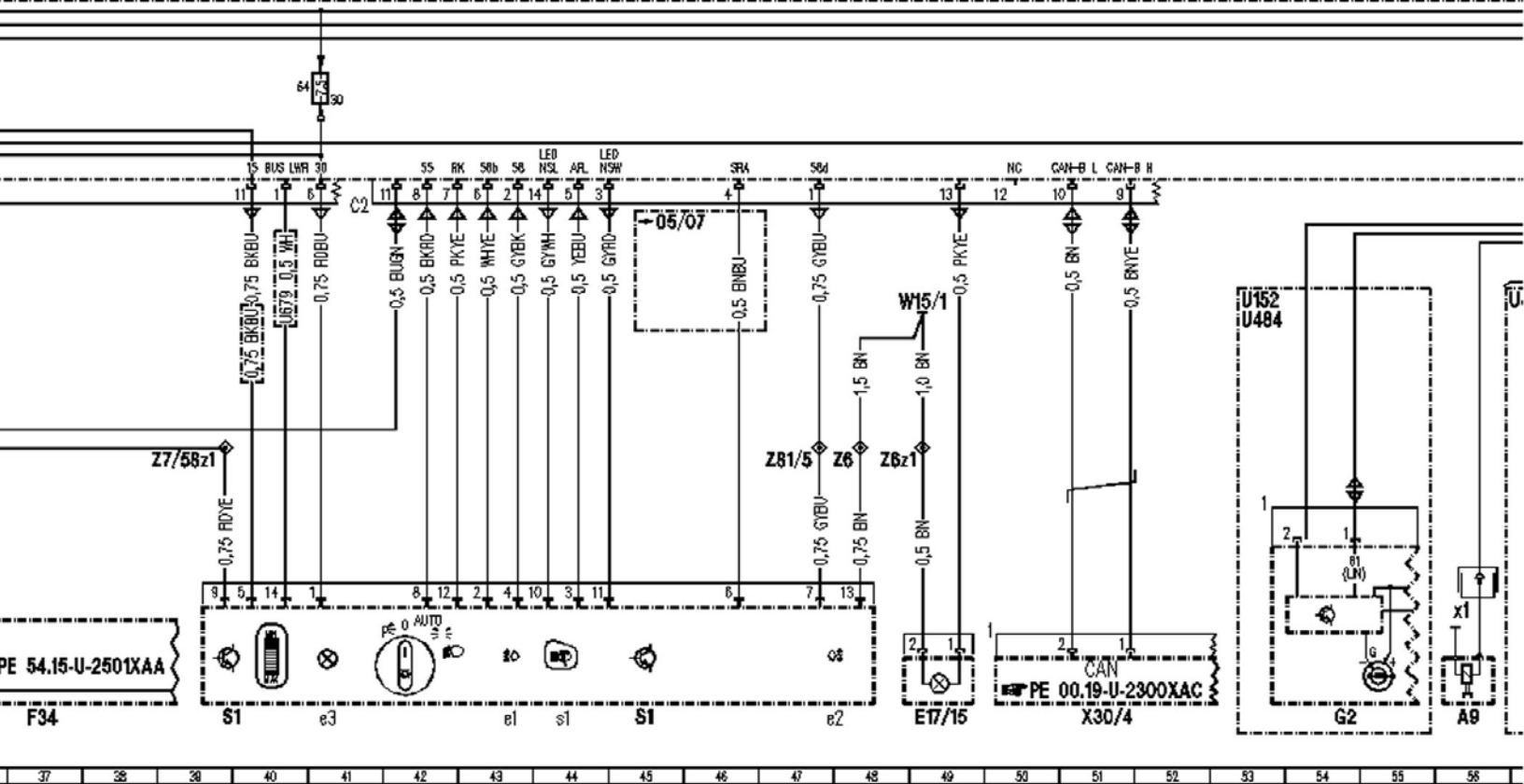
18 19 20 21 22 23 24 25 26 27 28 29 30 31 32 33 34 35 36 37



18 19 20 21 22 23 24 25 26 27 28 29 30 31 32 33 34 35 36 37

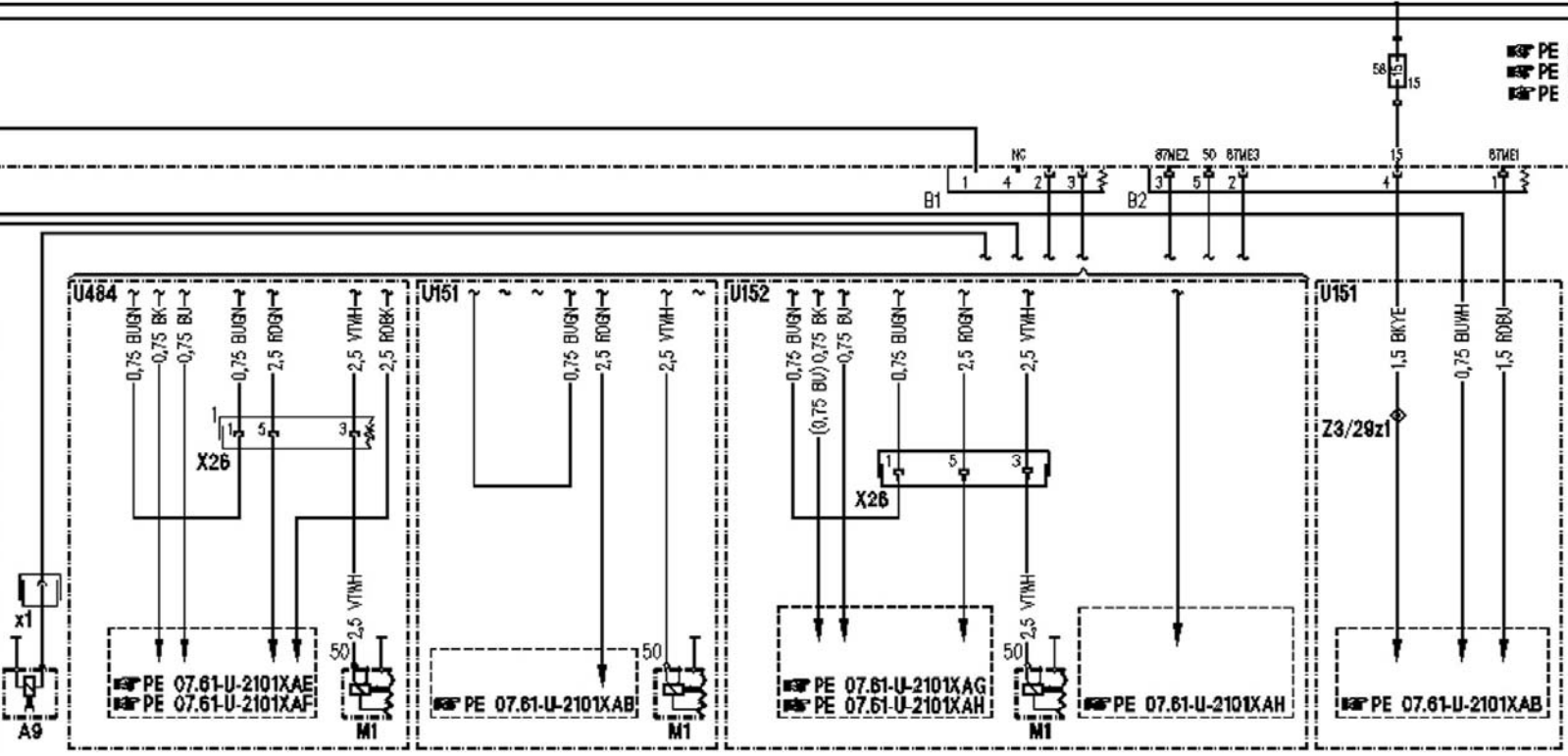
N10/1

N10/1

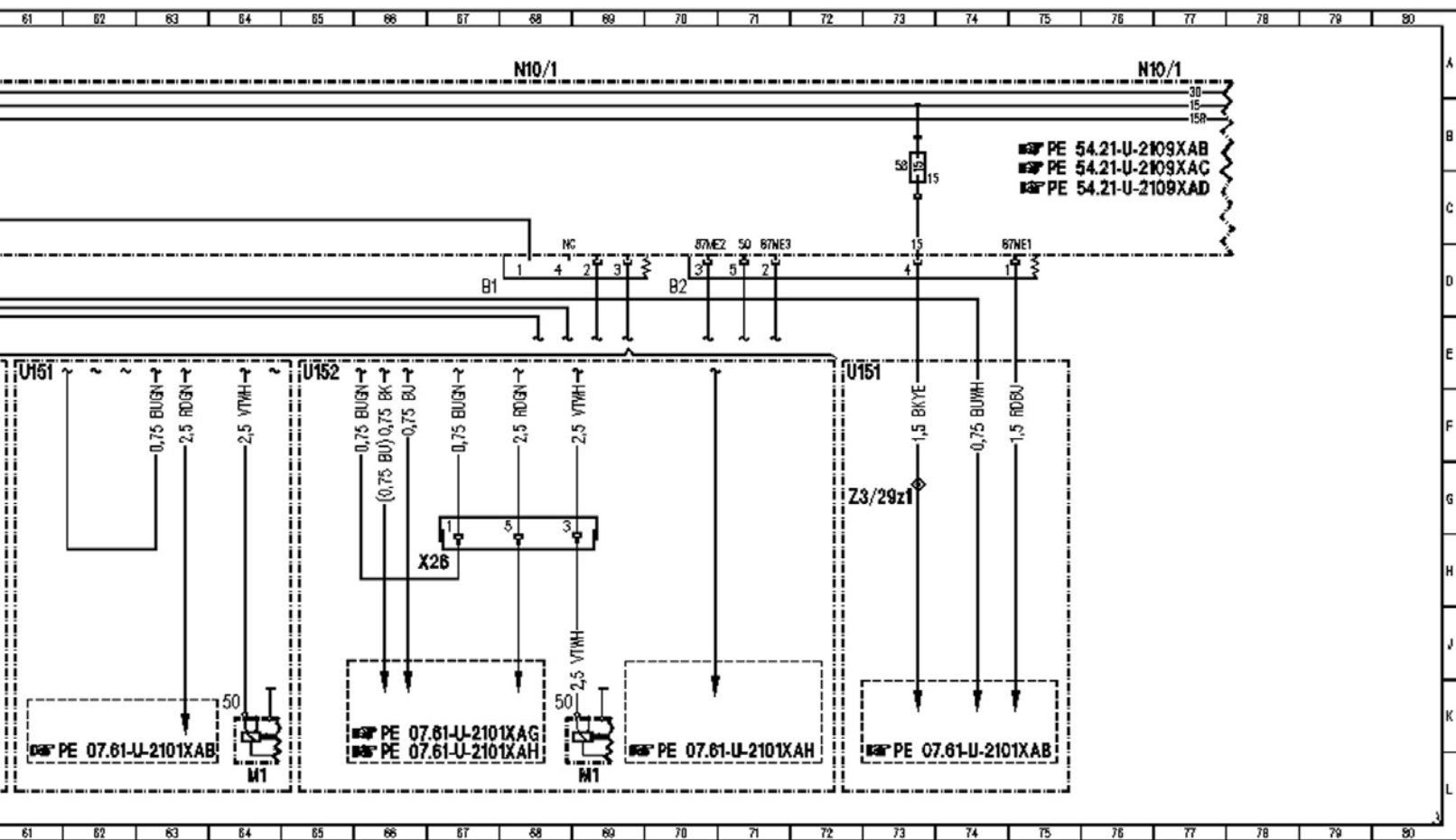


N10/1

N10/1

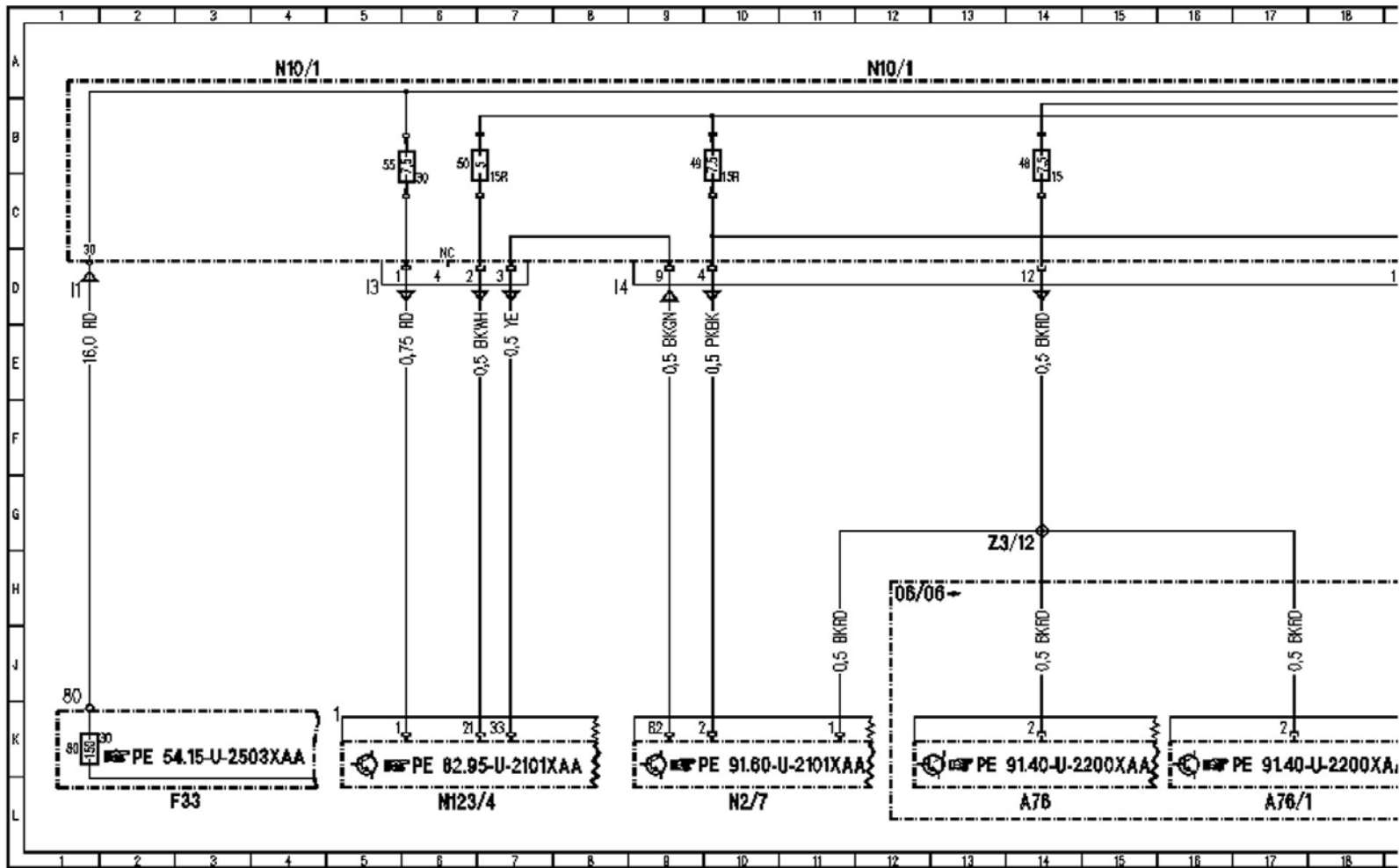


PE 5  
PE 5  
PE 5



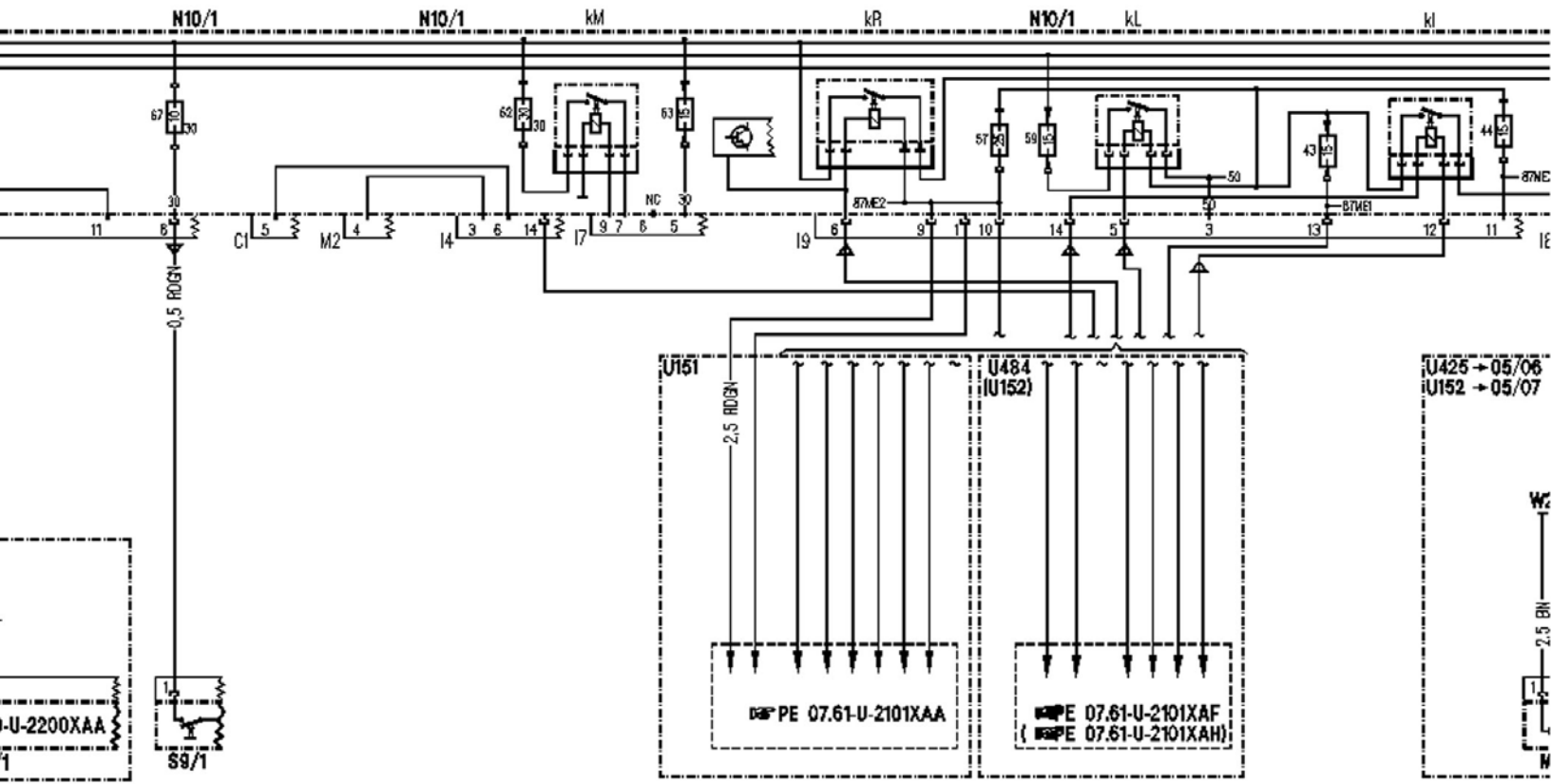
<b>Item</b>	<b>Designation</b>
<u>A1</u>	Instrument cluster
<u>A9</u>	AC compressor
<u>A9x1</u>	AC compressor connector
<u>E1</u>	Left front headlamp unit
<u>E1e1</u>	Left high beam
<u>E1e2</u>	Left low beam
<u>E1e3</u>	Left standing and parking lamp
<u>E1e5</u>	Left turn signal lamp
<u>E1i1</u>	Left high beam solenoid
<u>E1m1</u>	Left headlamp range adjustment motor
<u>E1m2</u>	Left dynamic cornering lamp motor
<u>E1n2</u>	Xenon headlamp ignition module
<u>E1n3</u>	HRA [LWR] power module
<u>E1n4</u>	Xenon headlamp supply module
<u>E2</u>	Right front headlamp unit
<u>E5/1</u>	Left fog lamp
<u>E13/2</u>	Glove compartment illumination with switch
<u>E13/2x1</u>	Glove compartment illumination separation point
<u>E17/15</u>	Right front footwell lamp
<u>F33</u>	Rear prefuse
<u>F33f80</u>	Fuse 80
<u>F34</u>	Interior fuse box
<u>F34f29</u>	Fuse 29
<u>G2</u>	Generator
<u>M1</u>	Starter
<u>M5/2</u>	HCS pump
<u>N10/1</u>	Driver-side SAM control module with fuse and relay module
<u>N10/1f51</u>	Fuse 51
<u>N10/1f52</u>	Fuse 52
<u>N10/1f58</u>	Fuse 58
<u>N10/1f64</u>	Fuse 64
<u>N10/1f65</u>	Fuse 65
<u>N10/1f66</u>	Fuse 66
<u>N10/1kN</u>	Circuit 15 relay

<u>N10/1kP</u>	Circuit 15R relay
<u>N26/5</u>	Electric steering lock control module
<u>N71</u>	Headlamp range adjustment control module
<u>N73</u>	EIS [EZS] control unit
<u>S1</u>	Exterior lamp switch
<u>S1e1</u>	Fog lamp indicator lamp
<u>S1e2</u>	Rear fog lamp indicator lamp
<u>S1e3</u>	Standing lamps indicator lamp
<u>S1s1</u>	HCS [SRA] switch
<u>U151</u>	Valid for engine 113
<u>U152</u>	Valid for engine 156
<u>U484</u>	Valid for M273 ME
<u>U501</u>	Valid for xenon headlamps
<u>U679</u>	Valid for version without xenon headlamps
<u>U803</u>	Valid for dynamic cornering lamp
<u>W9</u>	Ground (at left headlamp unit)
<u>W15/1</u>	Ground (right footwell)
<u>X26</u>	Interior and engine wiring harness connector
<u>X30/4</u>	Cockpit voltage distributor (CAN) connector
<u>Z3/11z2</u>	Circuit 15 connector sleeve (fused)
<u>Z3/29z1</u>	Circuit 15 connector sleeve (fused)
<u>Z6</u>	Ground connector sleeve
<u>Z6z1</u>	Ground connector sleeve
<u>Z6/50</u>	Ground (W9) connector sleeve
<u>Z7/1</u>	Circuit 30 connector sleeve
<u>Z7/58</u>	Circuit 30 connector sleeve
<u>Z7/58z1</u>	Circuit 30z connector sleeve
<u>Z36/12</u>	Headlamp range adjustment (HRA [LWR]) control bus connector sleeve
<u>Z81/5</u>	Circuit 58d COC connector sleeve

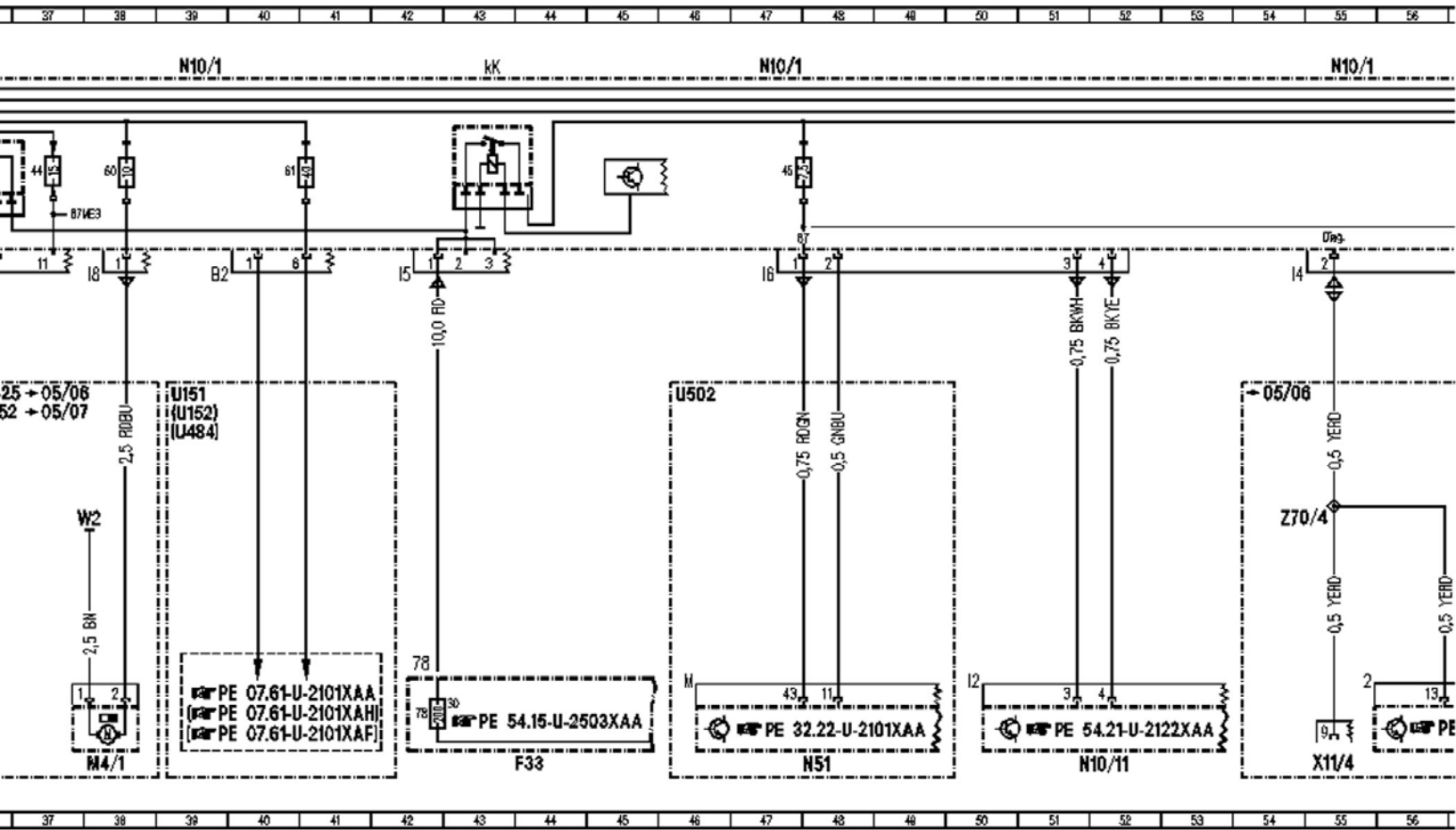


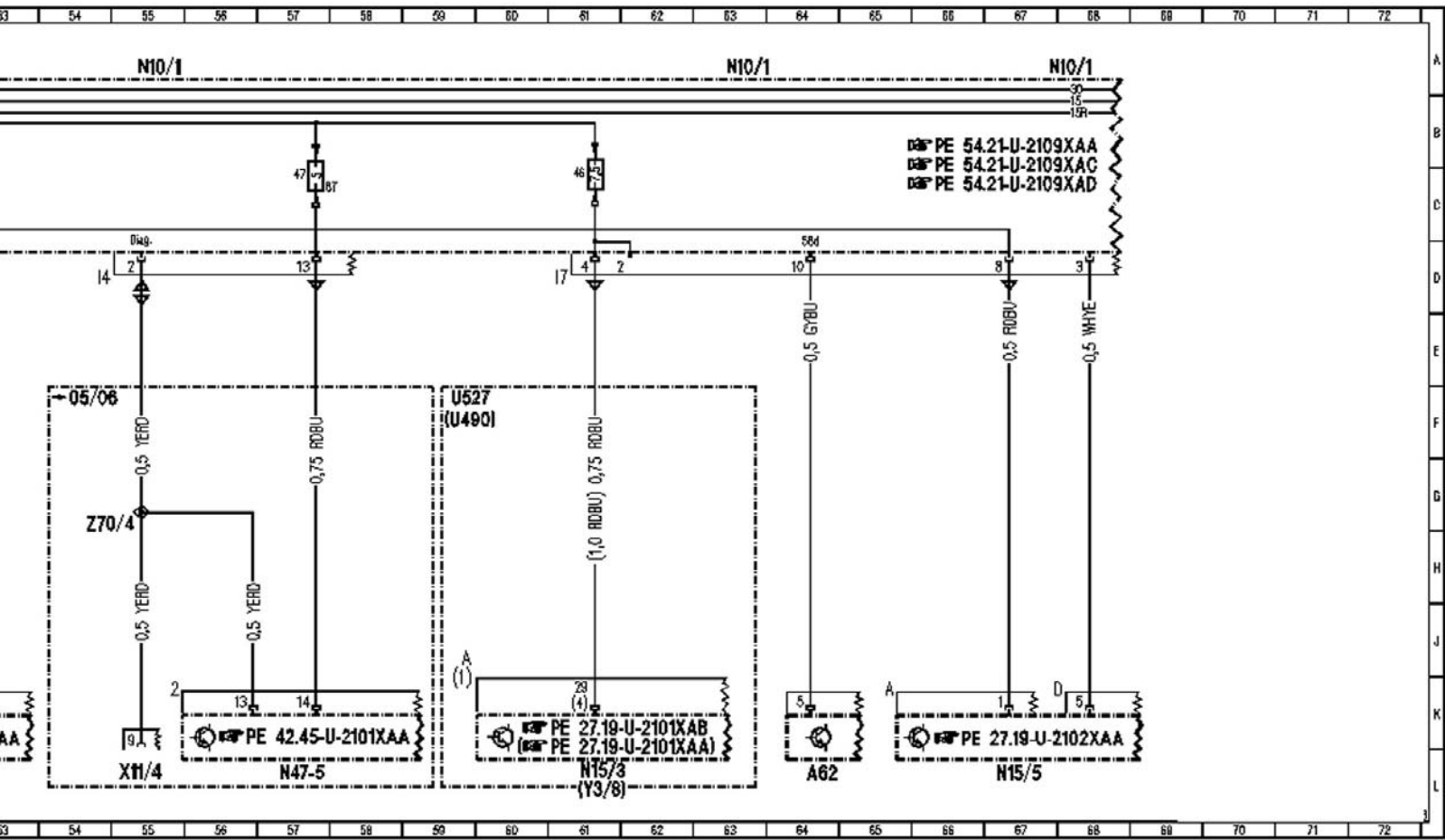


18 19 20 21 22 23 24 25 26 27 28 29 30 31 32 33 34 35 36 37



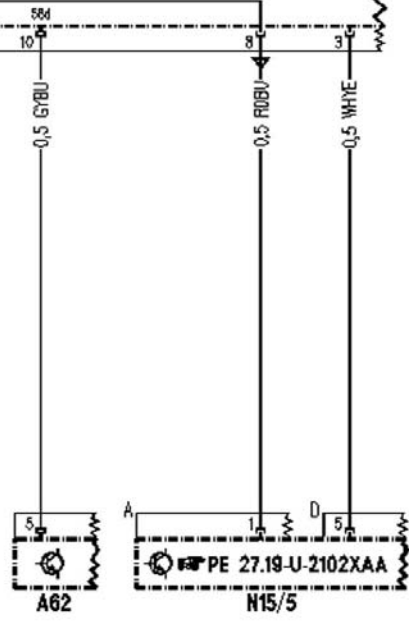
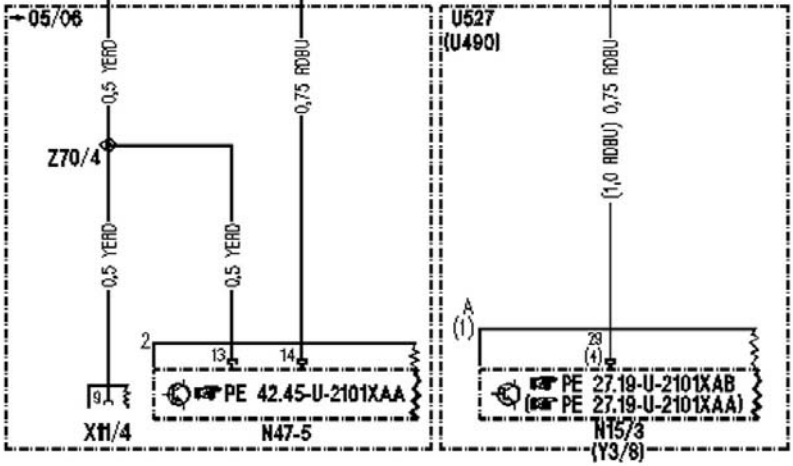
18 19 20 21 22 23 24 25 26 27 28 29 30 31 32 33 34 35 36 37





N10/1 N10/1 N10/1

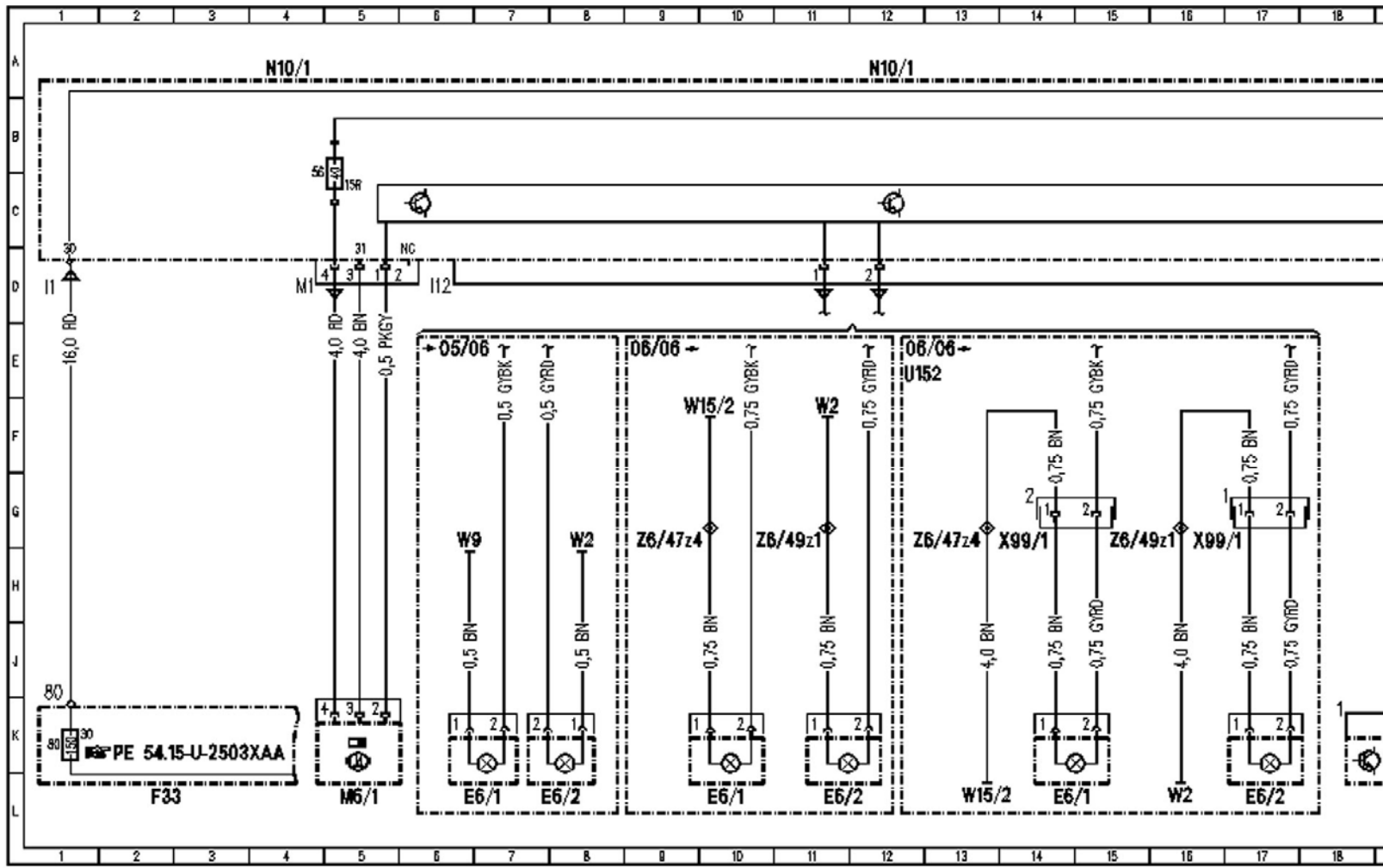
PE 54.21-U-2109XAA  
 PE 54.21-U-2109XAC  
 PE 54.21-U-2109XAD



<b>Item</b>	<b>Designation</b>
<u>A62</u>	Gear display sensor
<u>A76</u>	Left front reversible emergency tensioning retractor
<u>A76/1</u>	Right front reversible emergency tensioning retractor
<u>F33</u>	Rear prefuse
<u>F33f78</u>	Fuse 78
<u>F33f80</u>	Fuse 80
<u>M4/1</u>	Oil cooler fan
<u>N2/7</u>	Restraint systems control module
<u>N10/1</u>	Driver-side SAM control module with fuse and relay module

<u>N10/1f43</u>	Fuse 43
<u>N10/1f44</u>	Fuse 44
<u>N10/1f45</u>	Fuse 45
<u>N10/1f46</u>	Fuse 46
<u>N10/1f47</u>	Fuse 47
<u>N10/1f48</u>	Fuse 48
<u>N10/1f49</u>	Fuse 49
<u>N10/1f50</u>	Fuse 50
<u>N10/1f55</u>	Fuse 55
<u>N10/1f57</u>	Fuse 57
<u>N10/1f59</u>	Fuse 59
<u>N10/1f60</u>	Fuse 60
<u>N10/1f61</u>	Fuse 61
<u>N10/1f62</u>	Fuse 62
<u>N10/1f63</u>	Fuse 63
<u>N10/1f67</u>	Fuse 67
<u>N10/1kl</u>	Circuit 87 relay, engine
<u>N10/1kK</u>	Circuit 87 relay, chassis
<u>N10/1kL</u>	Starter relay
<u>N10/1kM</u>	Reserve relay
<u>N10/1kR</u>	Air pump or oil cooler fan relay
<u>N10/11</u>	Passenger-side SAM control module
<u>N15/3</u>	ETC [EGS] control module
<u>N15/5</u>	Electronic selector lever module control module
<u>N47-5</u>	ESP control module
<u>N51</u>	AIRMATIC with ADS control unit
<u>N123/4</u>	Emergency call system control unit

<u>S9/1</u>	Stop lamp switch (4-pin)
<u>U151</u>	Valid for engine 113
<u>U152</u>	Valid for engine 156
<u>U425</u>	Valid for CLS 55 AMG
<u>U484</u>	Valid for M273 ME
<u>U490</u>	Valid for 7-speed automatic transmission
<u>U502</u>	Valid for AIRMATIC
<u>U527</u>	Valid for electronic transmission control (ETC [EGS])
<u>W2</u>	Ground (at right headlamp unit)
<u>X11/4</u>	Data link connector
<u>Y3/8</u>	Electric control unit (VGS)
<u>Z3/12</u>	Circuit 15R connector sleeve
<u>Z70/4</u>	Diagnostic socket pin 9 connector sleeve

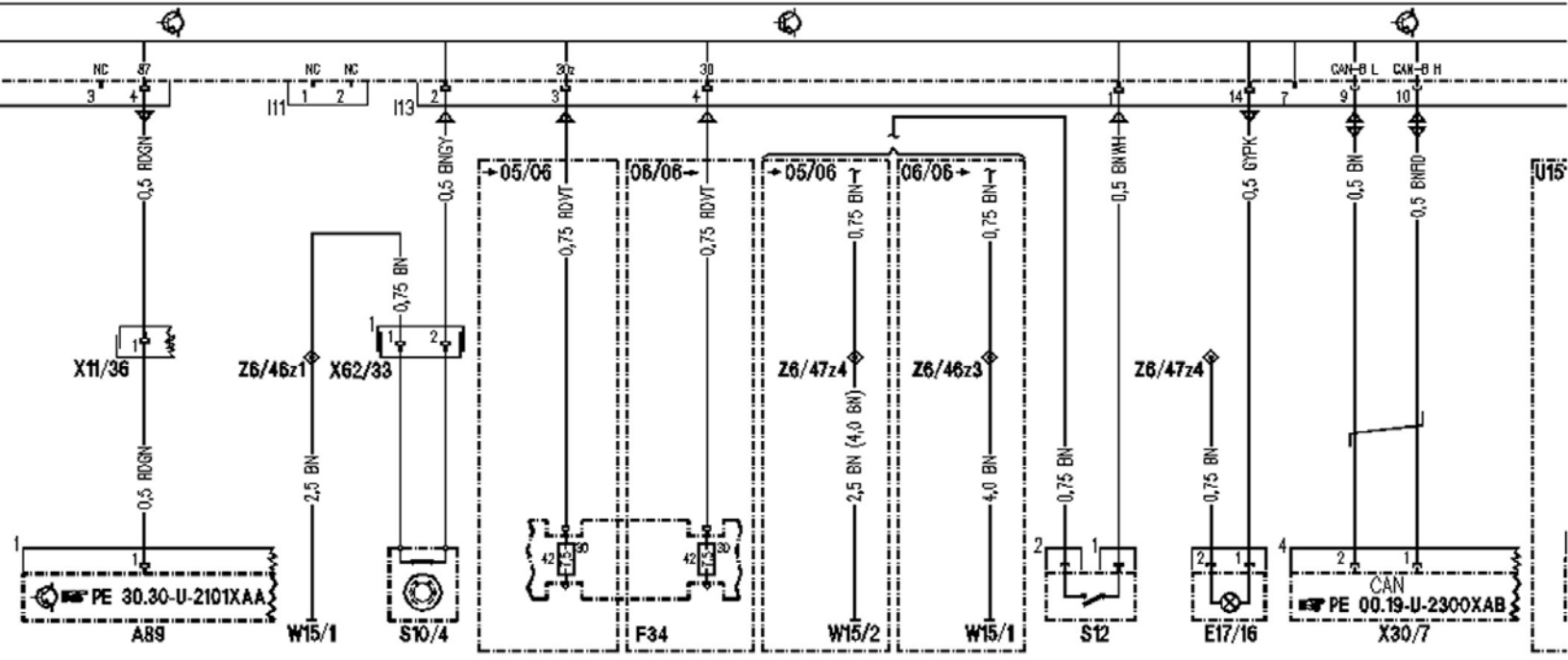


18 19 20 21 22 23 24 25 26 27 28 29 30 31 32 33 34 35 36 37 38

N10/1

N10/1

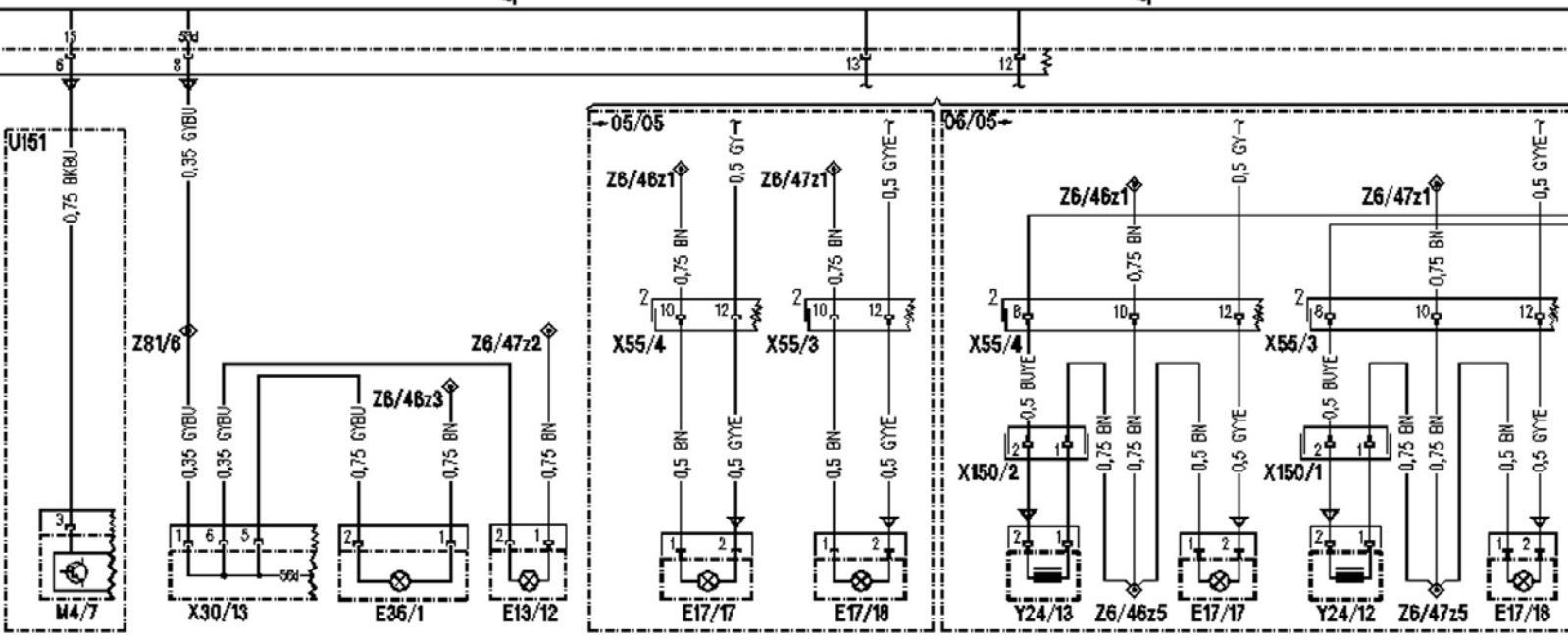
N10/1



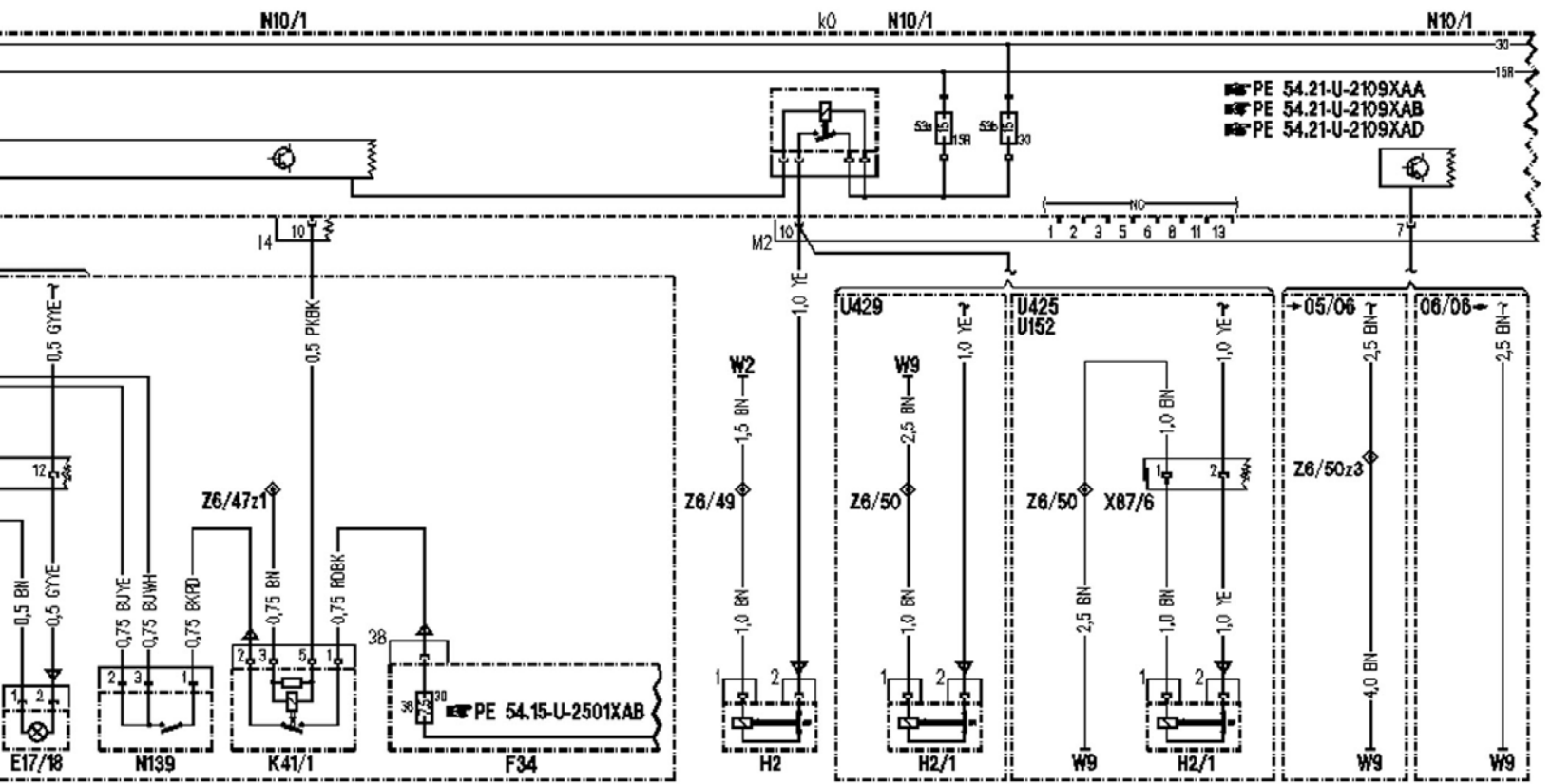
18 19 20 21 22 23 24 25 26 27 28 29 30 31 32 33 34 35 36 37 38

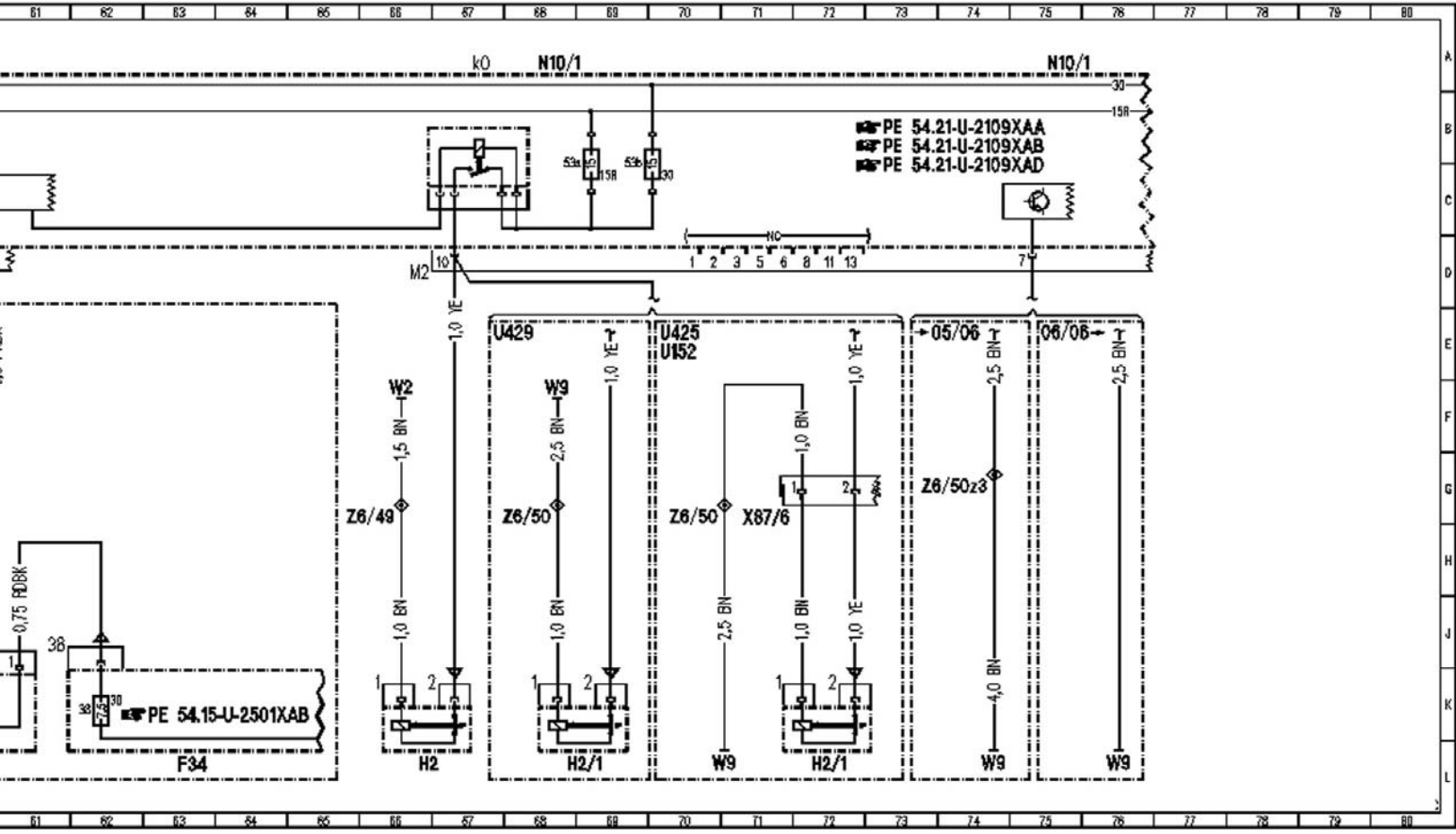
N10/1



N10/1



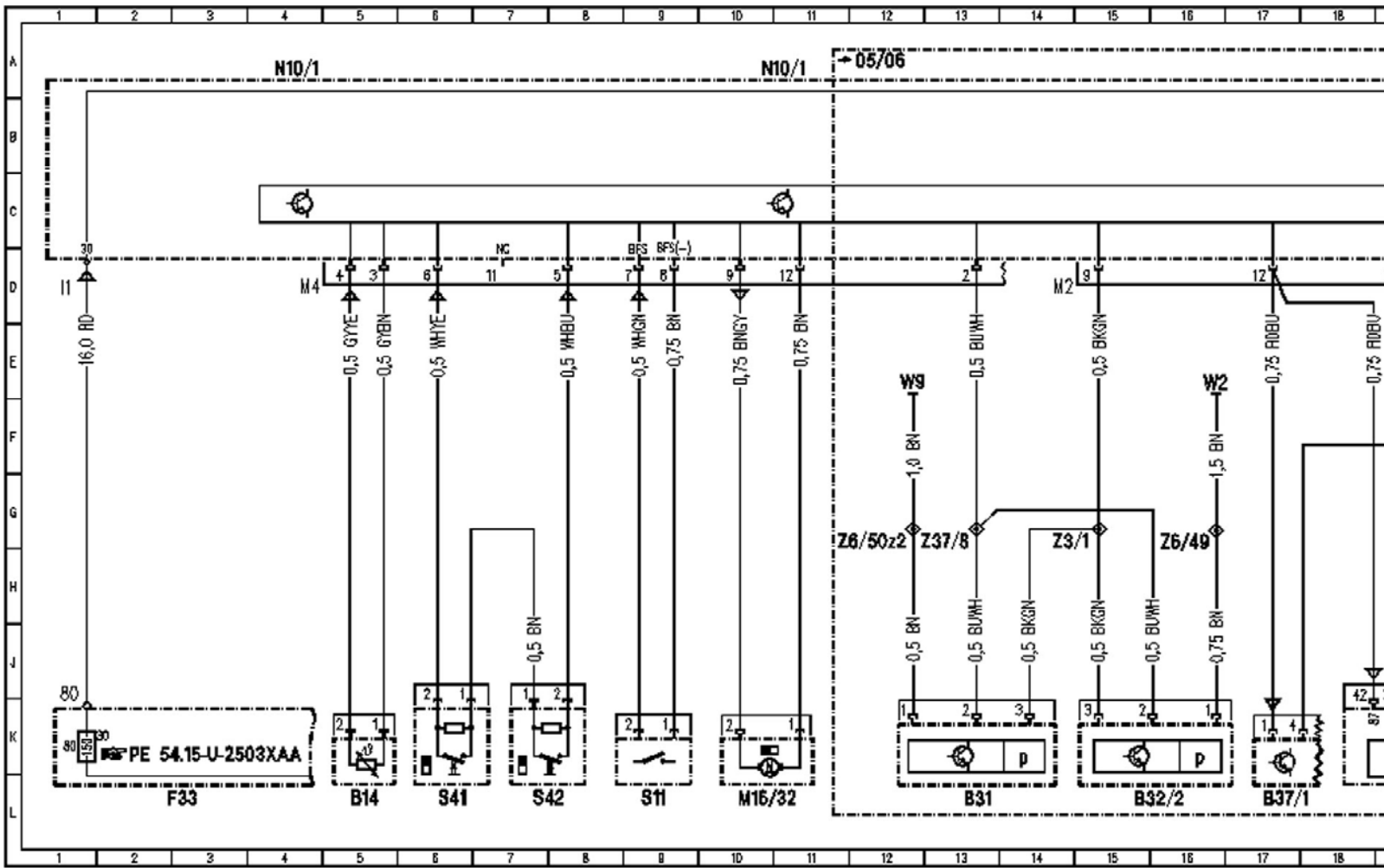


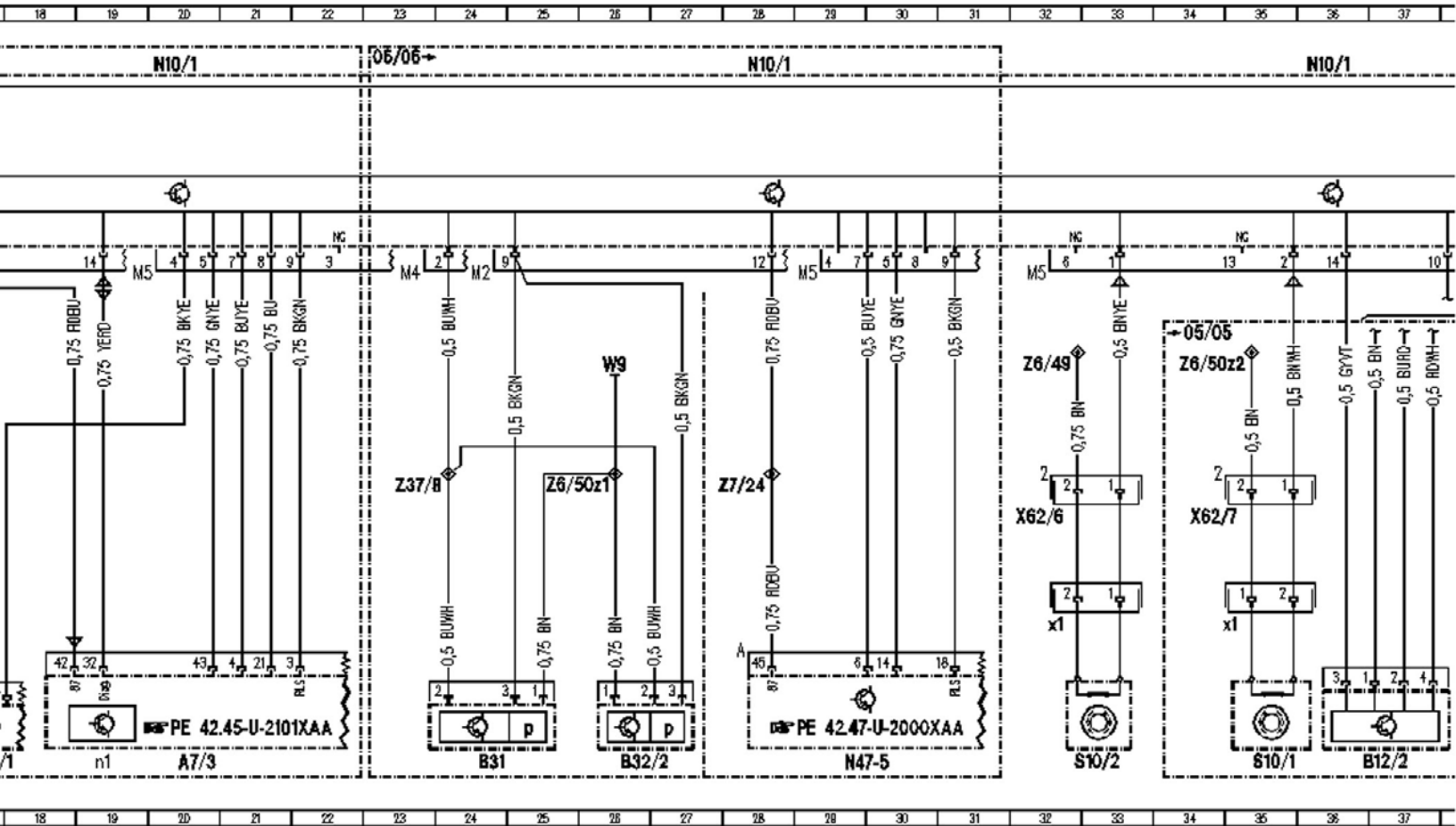




<b>Item</b>	<b>Designation</b>
<u>A89</u>	DTR control unit
<u>E6/1</u>	Left front side marker lamp 
<u>E6/2</u>	Right front side marker lamp 
<u>E13/12</u>	Right front stowage compartment illumination
<u>E17/16</u>	Left front footwell lamp
<u>E17/17</u>	Right rear footwell lamp
<u>E17/18</u>	Left rear footwell lamp
<u>E36/1</u>	Front armrest folding compartment illumination
<u>F33</u>	Rear prefuse
<u>F33f80</u>	Fuse 80
<u>F34</u>	Interior fuse box
<u>F34f38</u>	Fuse 38
<u>F34f42</u>	Fuse 42
<u>H2</u>	Left fanfare horn
<u>H2/1</u>	Right fanfare horn
<u>K41/1</u>	NECK-PRO head restraint relay
<u>M4/7</u>	Electric suction fan engine and AC with integrated control
<u>M6/1</u>	Wiper motor
<u>N10/1</u>	Driver-side SAM control module with fuse and relay module
<u>N10/1f53a</u>	Fuse 53a
<u>N10/1f53b</u>	Fuse 53b
<u>N10/1f56</u>	Fuse 56
<u>N10/1kO</u>	FAN relay module
<u>N139</u>	NECK-PRO head restraint triggering device
<u>S10/4</u>	Right rear brake pad contact sensor
<u>S12</u>	Parking brake indicator switch
<u>U151</u>	Valid for engine 113
<u>U152</u>	Valid for engine 156
<u>U425</u>	Valid for CLS 55 AMG
<u>U429</u>	Valid for all except AMG

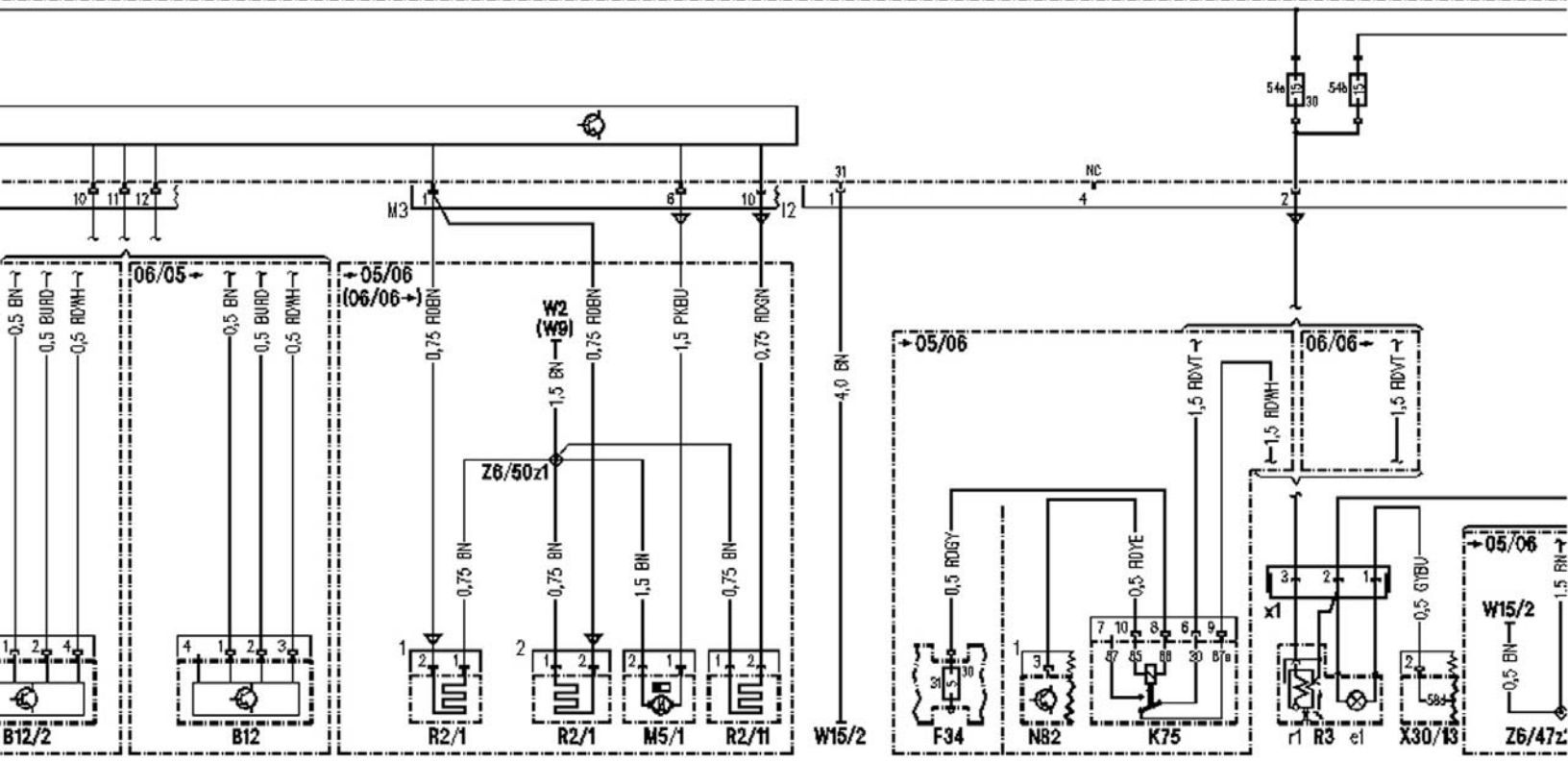
<u>W2</u>	Ground (at right headlamp unit)
<u>W9</u>	Ground (at left headlamp unit)
<u>W15/1</u>	Ground (right footwell)
<u>W15/2</u>	Ground (left footwell)
<u>X11/36</u>	DTR diagnosis connector
<u>X30/7</u>	Left voltage distributor (CAN) connector
<u>X30/13</u>	Circuit 58d potential splitter
<u>X55/3</u>	Left front seat contacting strip
<u>X55/4</u>	Right front seat contacting strip
<u>X62/33</u>	Right rear axle electrical distributor connector
<u>X87/6</u>	Fuse and relay module and fanfare horns intermediate connector
<u>X99/1</u>	Separation point 1
<u>X150/1</u>	Driver NECK-PRO head restraint solenoid separation point
<u>X150/2</u>	Front passenger NECK-PRO head restraint solenoid separation point
<u>Y24/12</u>	Driver NECK-PRO head restraint solenoid
<u>Y24/13</u>	Front passenger NECK-PRO head restraint solenoid
<u>Z6/46z1</u>	Ground (W15/1) connector sleeve
<u>Z6/46z3</u>	Ground (W15/1) connector sleeve
<u>Z6/46z5</u>	Ground (W15/1) connector sleeve
<u>Z6/47z1</u>	Ground (W15/2) connector sleeve
<u>Z6/47z2</u>	Ground (W15/2) connector sleeve
<u>Z6/47z4</u>	Ground (W15/2) connector sleeve
<u>Z6/47z5</u>	Ground (W15/2) connector sleeve
<u>Z6/49</u>	Ground (W2) connector sleeve
<u>Z6/49z1</u>	Ground (W2) connector sleeve
<u>Z6/50</u>	Ground (W9) connector sleeve
<u>Z6/50z3</u>	Ground (W9) connector sleeve
<u>Z81/6</u>	Circuit 58d connector sleeve

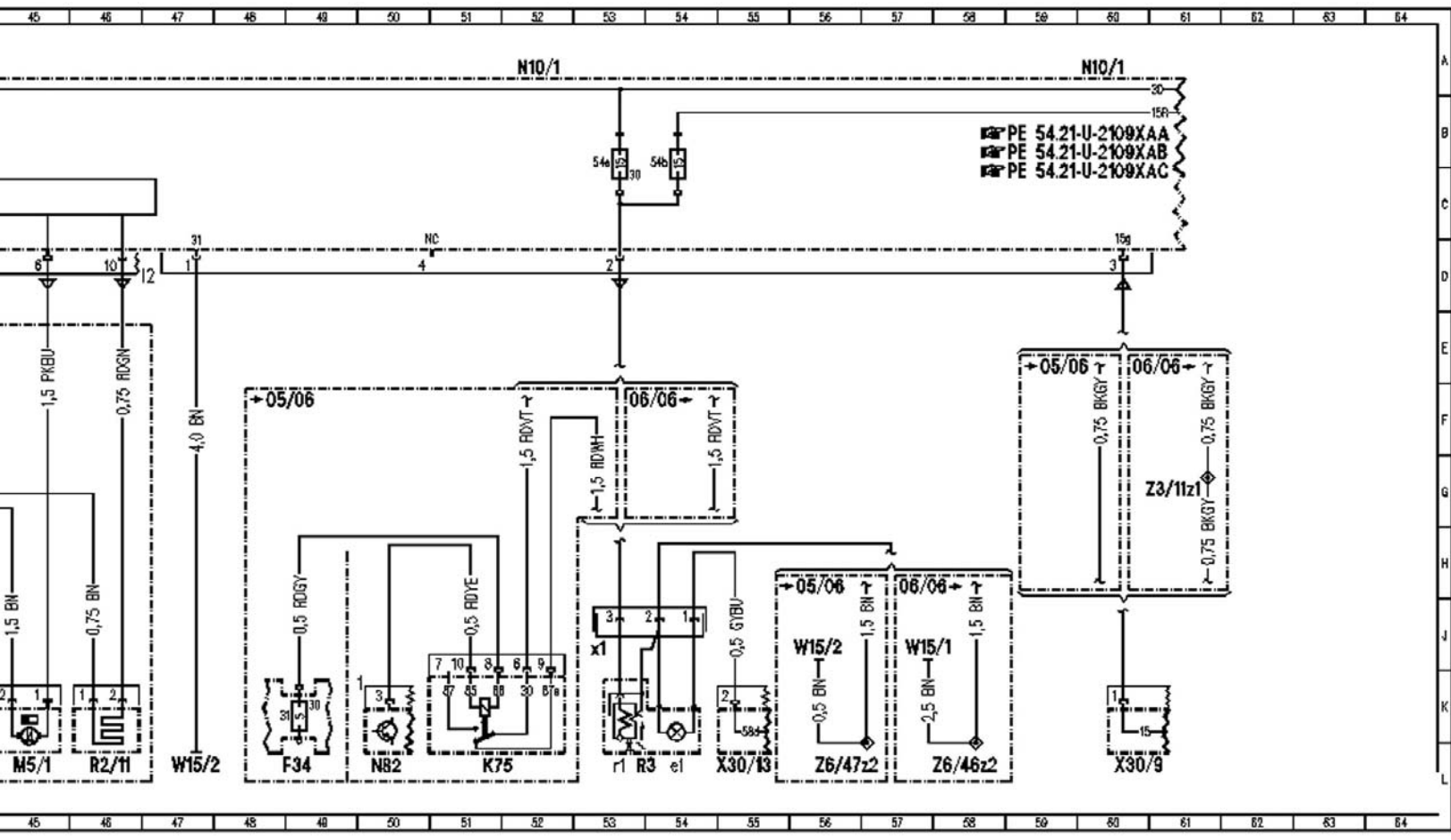




N10/1

N10/1







<b>Item</b>	<b>Designation</b>
<u>A7/3</u>	Traction system hydraulic unit
<u>A7/3n1</u>	SBC control module
<u>B12</u>	Refrigerant pressure sensor
<u>B12/2</u>	Refrigerant pressure and temperature sensor
<u>B14</u>	Ambient temperature display temperature sensor
<u>B31</u>	C-AAC [K-KLA] multifunction sensor
<u>B32/2</u>	C-AAC sun sensor (4 in total)
<u>B37/1</u>	SBC pedal value sensor
<u>F33</u>	Rear prefuse
<u>F33f80</u>	Fuse 80
<u>F34</u>	Interior fuse box
<u>F34f31</u>	Fuse 31
<u>K75</u>	Cutoff relay for interruptible loads
<u>M5/1</u>	Windshield washer fluid pump
<u>M16/32</u>	Heat exchanger shutoff motor
<u>N10/1</u>	Driver-side SAM control module with fuse and relay module
<u>N10/1f54a</u>	Fuse 54a
<u>N10/1f54b</u>	Fuse 54b
<u>N47-5</u>	ESP control module
<u>N82</u>	Battery control module
<u>R2/1</u>	Washer nozzle heater
<u>R2/11</u>	Washer nozzle hose heater
<u>R3</u>	Illuminated cigar lighter
<u>R3e1</u>	Illumination
<u>R3r1</u>	Heating element
<u>R3x1</u>	Front cigar lighter connector
<u>S10/1</u>	Left front brake pad contact sensor
<u>S10/1x1</u>	Left front brake pad contact sensor connector
<u>S10/2</u>	Right front brake pad contact sensor
<u>S10/2x1</u>	Right front brake pad contact sensor connector
<u>S11</u>	Brake fluid indicator switch
<u>S41</u>	Coolant level indicator switch
<u>S42</u>	Windshield washer fluid level indicator switch
<u>W2</u>	Ground (at right headlamp unit)
<u>W9</u>	Ground (at left headlamp unit)

<u>W15/1</u>	Ground (right footwell)
<u>W15/2</u>	Ground (left footwell)
<u>X30/9</u>	Circuit 15 voltage distributor
<u>X30/13</u>	Circuit 58d potential splitter
<u>X62/6</u>	Right front axle multiple circuit junction connector, in component compartment
<u>X62/7</u>	Left front axle multiple circuit junction connector, in component compartment
<u>Z3/1</u>	Circuit 15 connector sleeve (AAC [KLA]/TAC [TAU])
<u>Z3/11z1</u>	Circuit 15 connector sleeve (fused)
<u>Z6/46z2</u>	Ground (W15/1) connector sleeve
<u>Z6/47z2</u>	Ground (W15/2) connector sleeve
<u>Z6/49</u>	Ground (W2) connector sleeve
<u>Z6/50z1</u>	Ground (W9) connector sleeve
<u>Z6/50z2</u>	Ground (W9) connector sleeve
<u>Z7/24</u>	Circuit 87 connector sleeve
<u>Z37/8</u>	CAN bus climate control connector sleeve