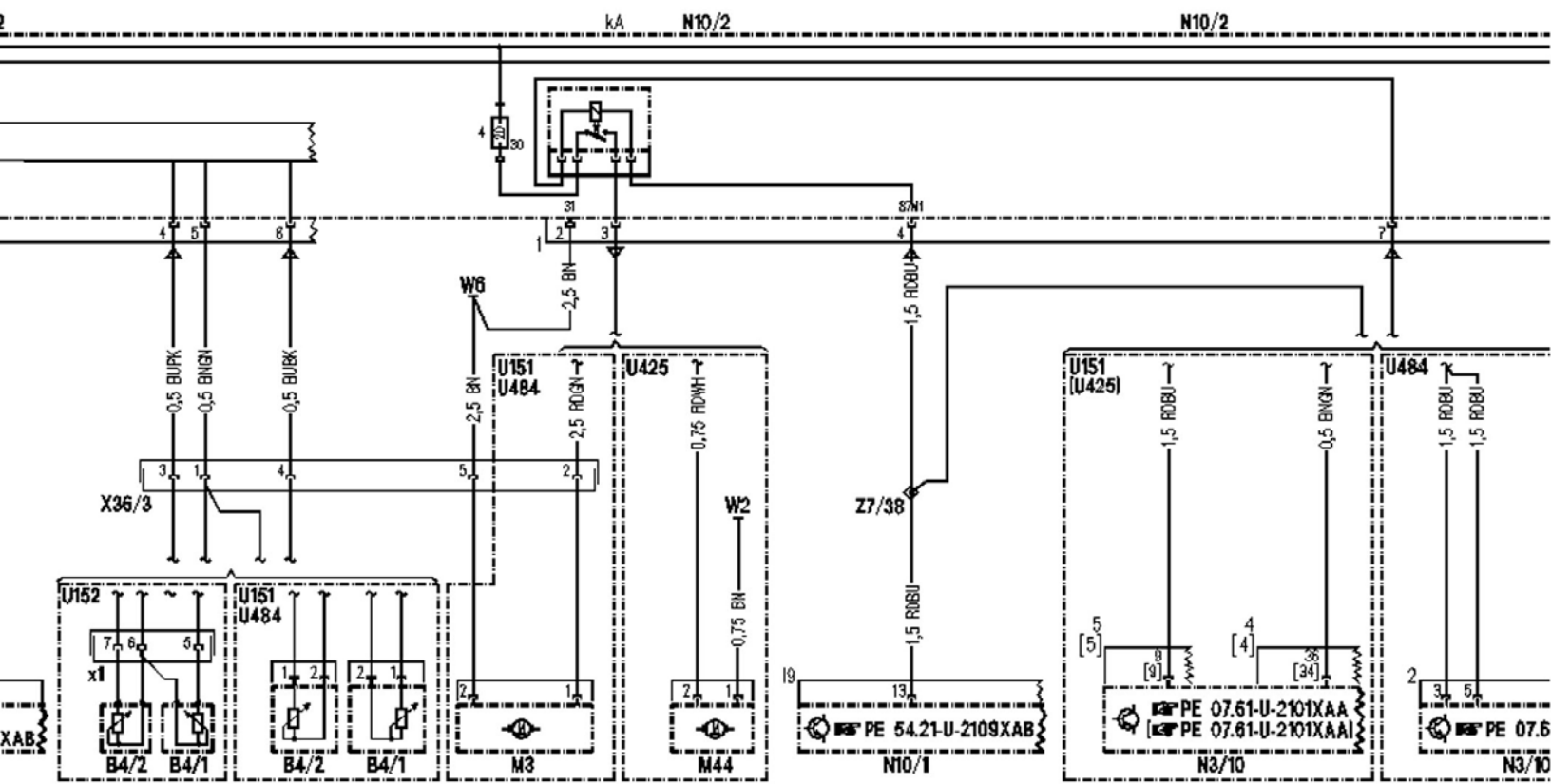
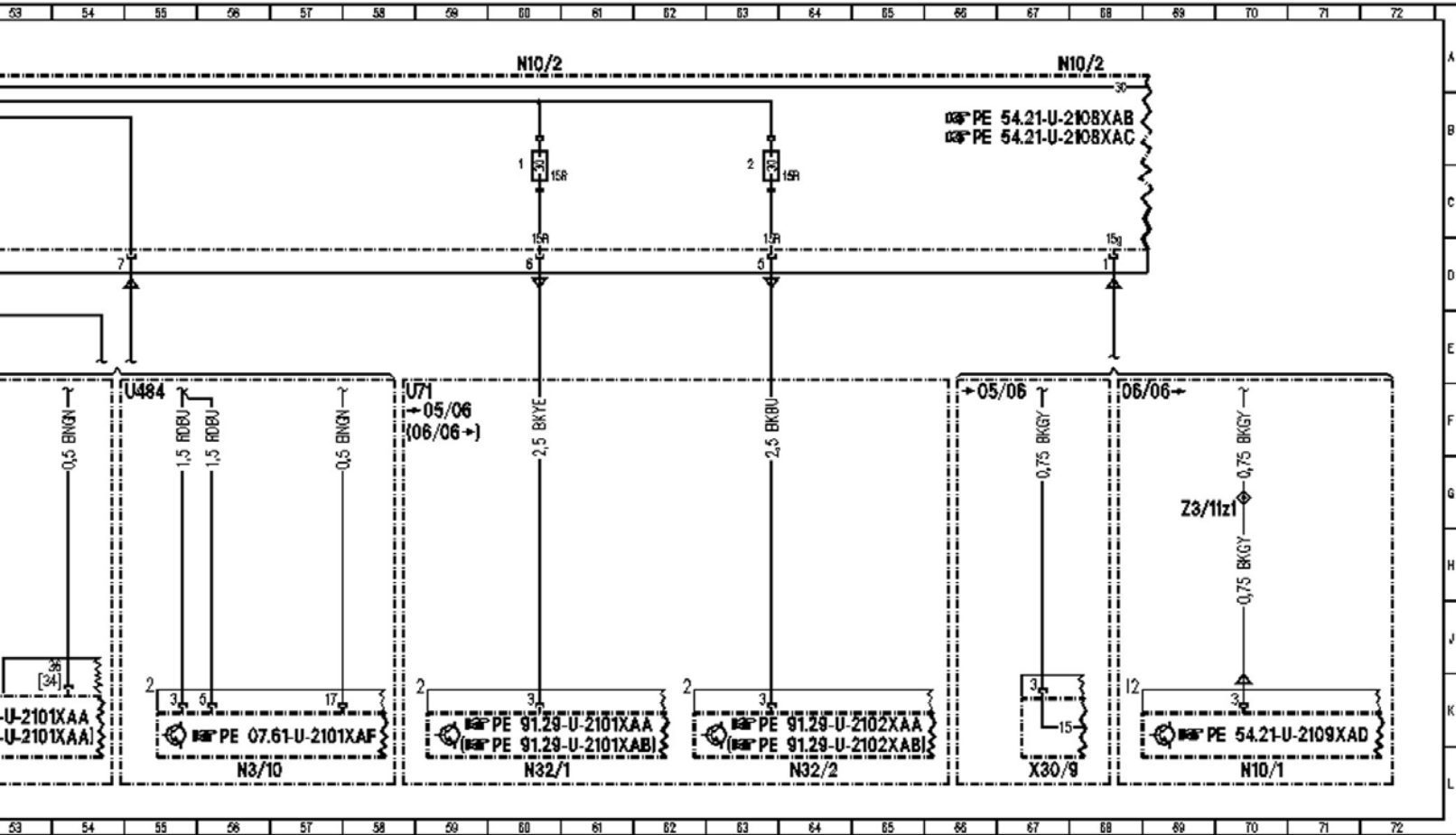


37 38 39 40 41 42 43 44 45 46 47 48 49 50 51 52 53 54 55 56



37 38 39 40 41 42 43 44 45 46 47 48 49 50 51 52 53 54 55 56



<b>Item</b>	<b>Designation</b>
<u>A7/3</u>	Traction system hydraulic unit
<u>B4/1</u>	Left fuel level sensor
<u>B4/1x1</u>	Left tank half fuel level sensor connector
<u>B4/2</u>	Right fuel level sensor
<u>E3</u>	Left taillamp
<u>E3e1</u>	Outer left turn signal lamp
<u>E3e2</u>	Outer left taillamp, parking lamp, rear fog lamp
<u>E3e3</u>	Left backup lamp
<u>E3e4</u>	Left stop lamp
<u>E3e5</u>	Inner left taillamp, rear fog lamp
<u>E3e7</u>	Inner left turn signal lamp
<u>E4</u>	Right taillamp
<u>E4e1</u>	Outer right turn signal lamp
<u>E4e2</u>	Outer right taillamp, parking lamp, rear fog lamp
<u>E4e3</u>	Right backup lamp
<u>E4e4</u>	Right stop lamp
<u>E4e5</u>	Inner right taillamp, rear fog lamp
<u>E4e7</u>	Inner right turn signal lamp
<u>E18/5</u>	Left trunk lamp
<u>E19/1</u>	Left license plate lamp
<u>E19/2</u>	Right license plate lamp
<u>E21</u>	Center high-mounted stop lamp
<u>E40</u>	Trunk lid ambient lamp
<u>F33</u>	Rear prefuse
<u>F33f79</u>	Fuse 79
<u>M3</u>	Fuel pump (FP)
<u>M44</u>	Charge air cooler circulation pump
<u>N3/10</u>	ME-SFI [ME] control module
<u>N10/1</u>	Driver-side SAM control module with fuse and relay module
<u>N10/2</u>	Rear SAM control module with fuse and relay module
<u>N10/2f1</u>	Fuse 1
<u>N10/2f2</u>	Fuse 2
<u>N10/2f4</u>	Fuse 4
<u>N10/2f7</u>	Fuse 7

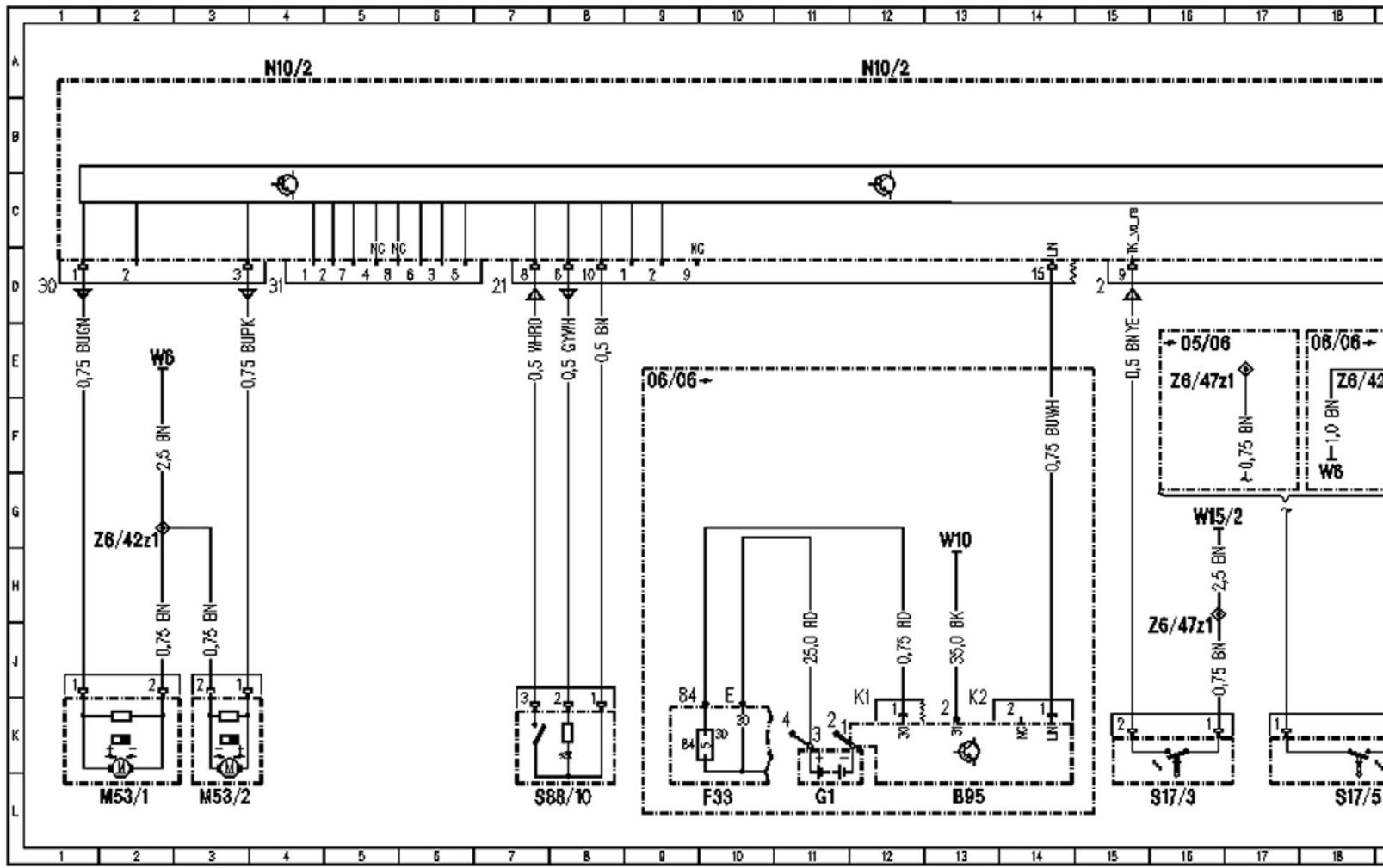
N10/2f11 Fuse 11  
N10/2kA Fuel pump relay module  
N10/2kB Relay 2, circuit 15R  
N10/2kD Rear wiper relay  
N32/1 Driver front seat adjustment control module with memory  
N32/2 Front passenger front seat adjustment control module with memory  
N47-5 ESP control module  
S88/4 Pawl rotary tumbler switch  
S88/6 Trunk lid contact switch  
S88/8 Trunk lid external operation switch  
U71 Valid for seat adjustment with memory  
U151 Valid for engine 113

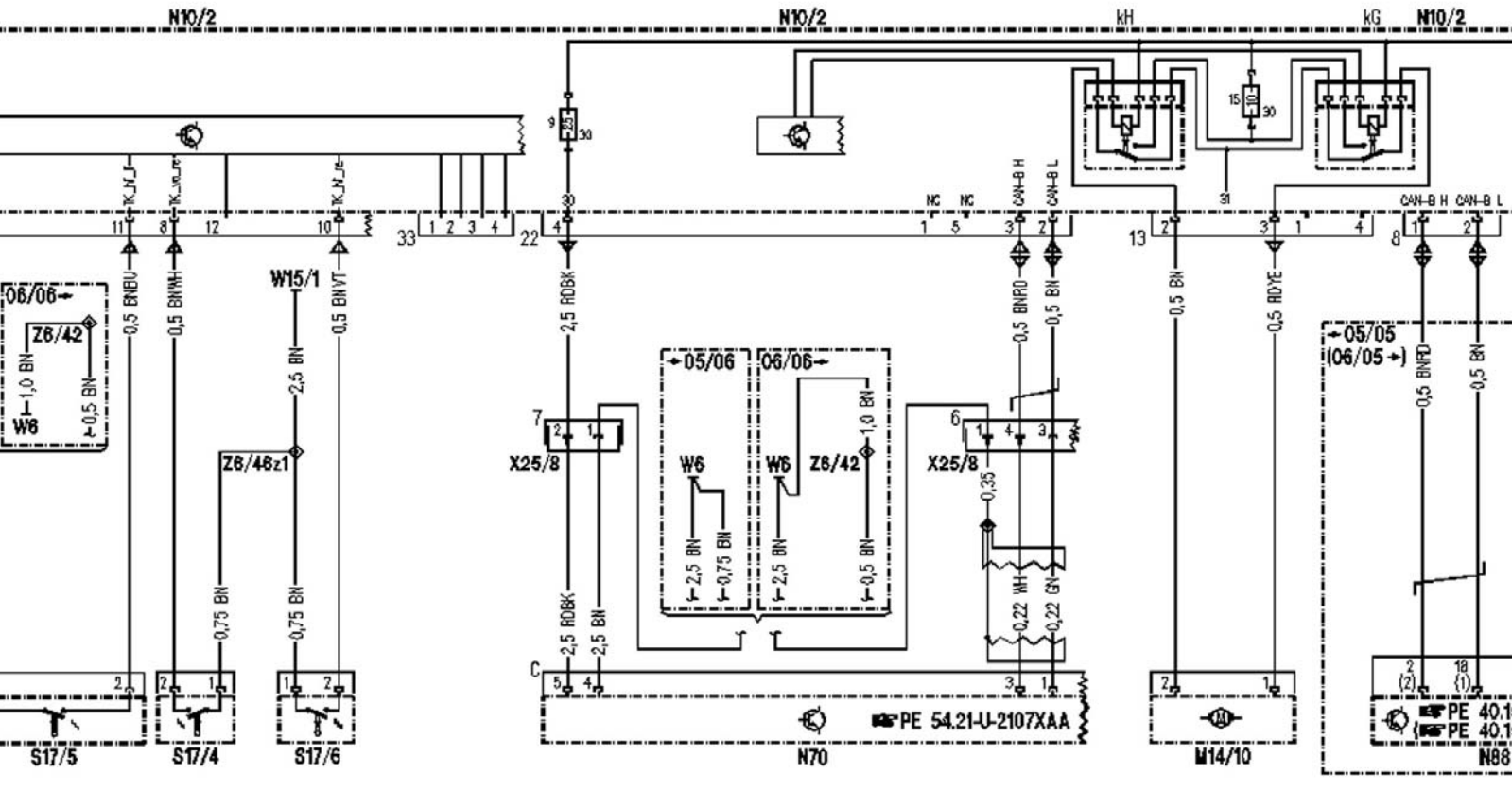
U152 Valid for engine 156  
U167 Installed in USA and Canada as of 2005. Also in Mexico, Greece, South Africa and Japan as of 01/2006  
U425 Valid for CLS 55 AMG

U484 Valid for M273 ME

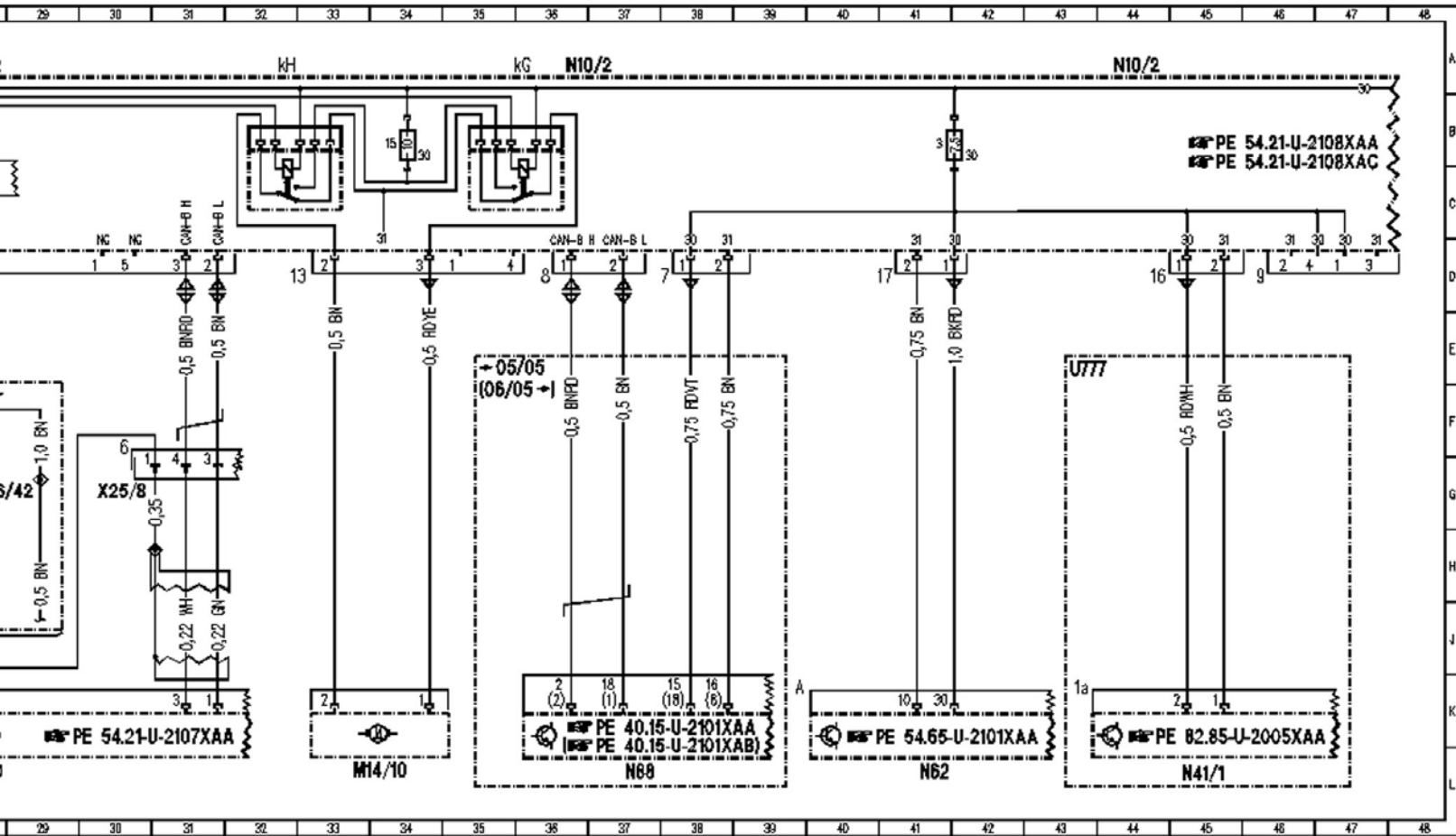
W2 Ground (at right headlamp unit)  
W6 Ground (left wheelhousing in trunk)

X30/7 Left voltage distributor (CAN) connector  
X30/9 Circuit 15 voltage distributor  
X36/3 Fuel pump wiring harness connector  
X62 VSS [GES] connector (signals)  
Z3/11z1 Circuit 15 connector sleeve (fused)  
Z6/20z1 Tailgate ground connector sleeve  
Z6/20z2 Tailgate ground connector sleeve  
Z7/38 Circuit 87 M1i connector sleeve





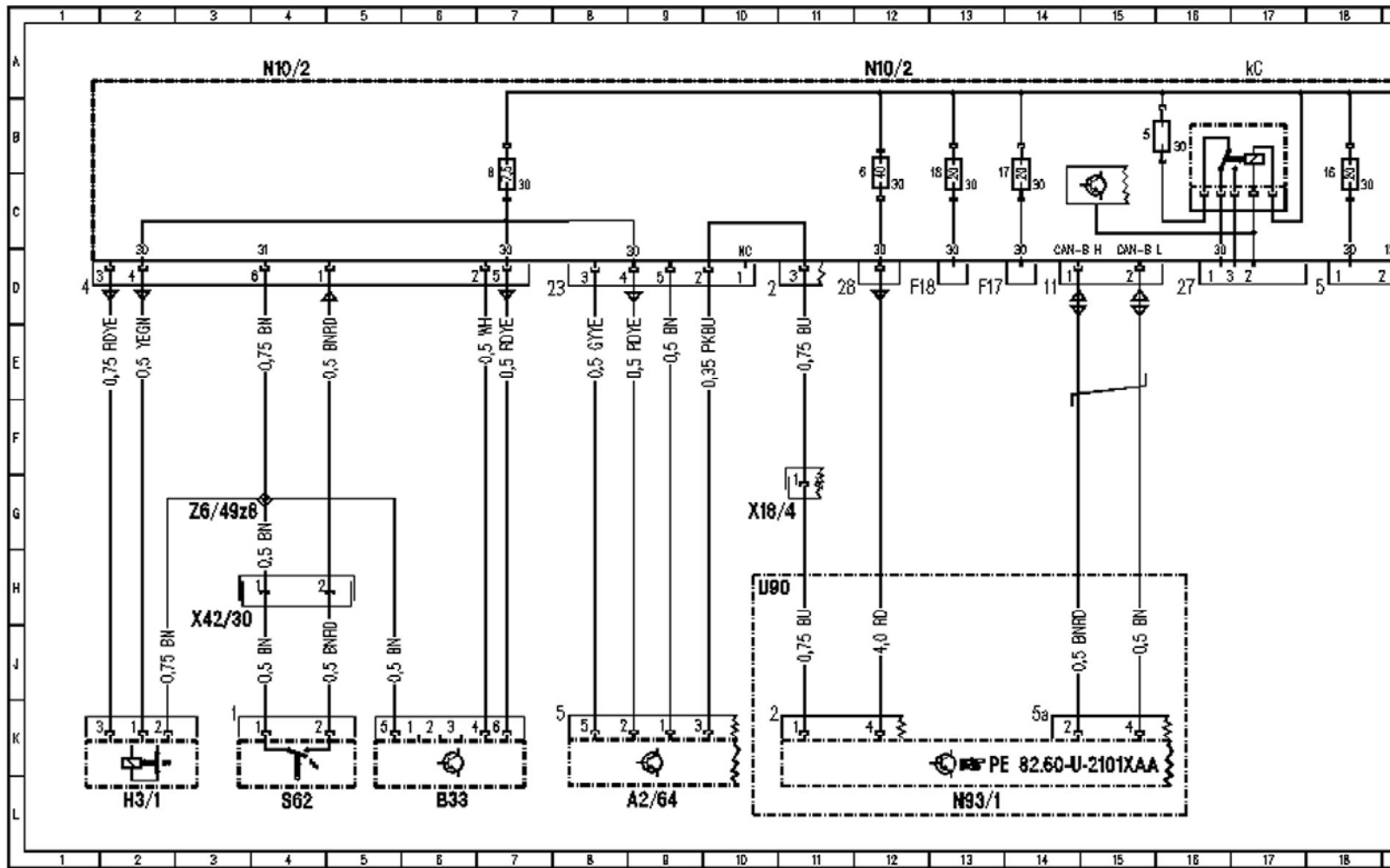


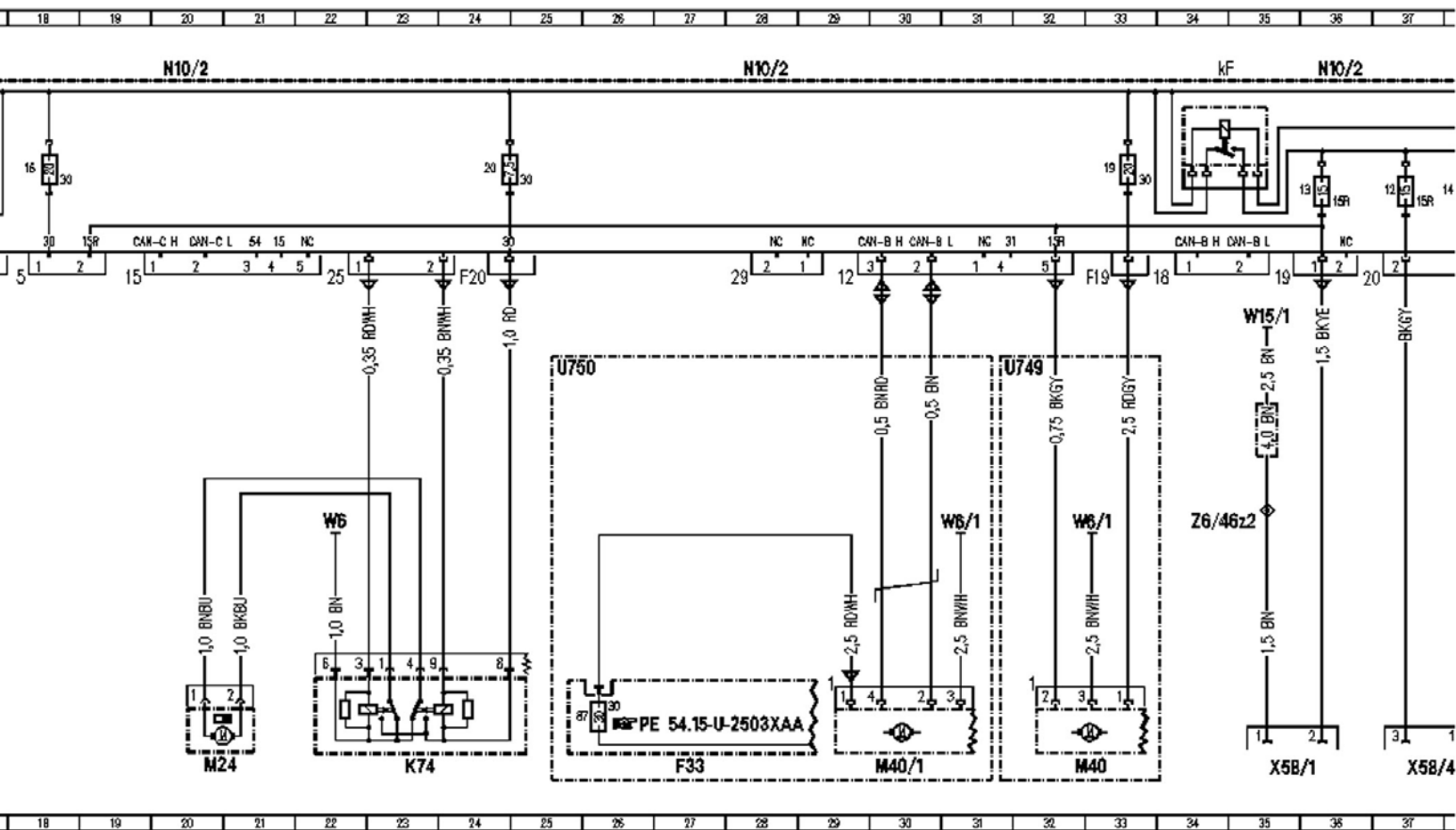


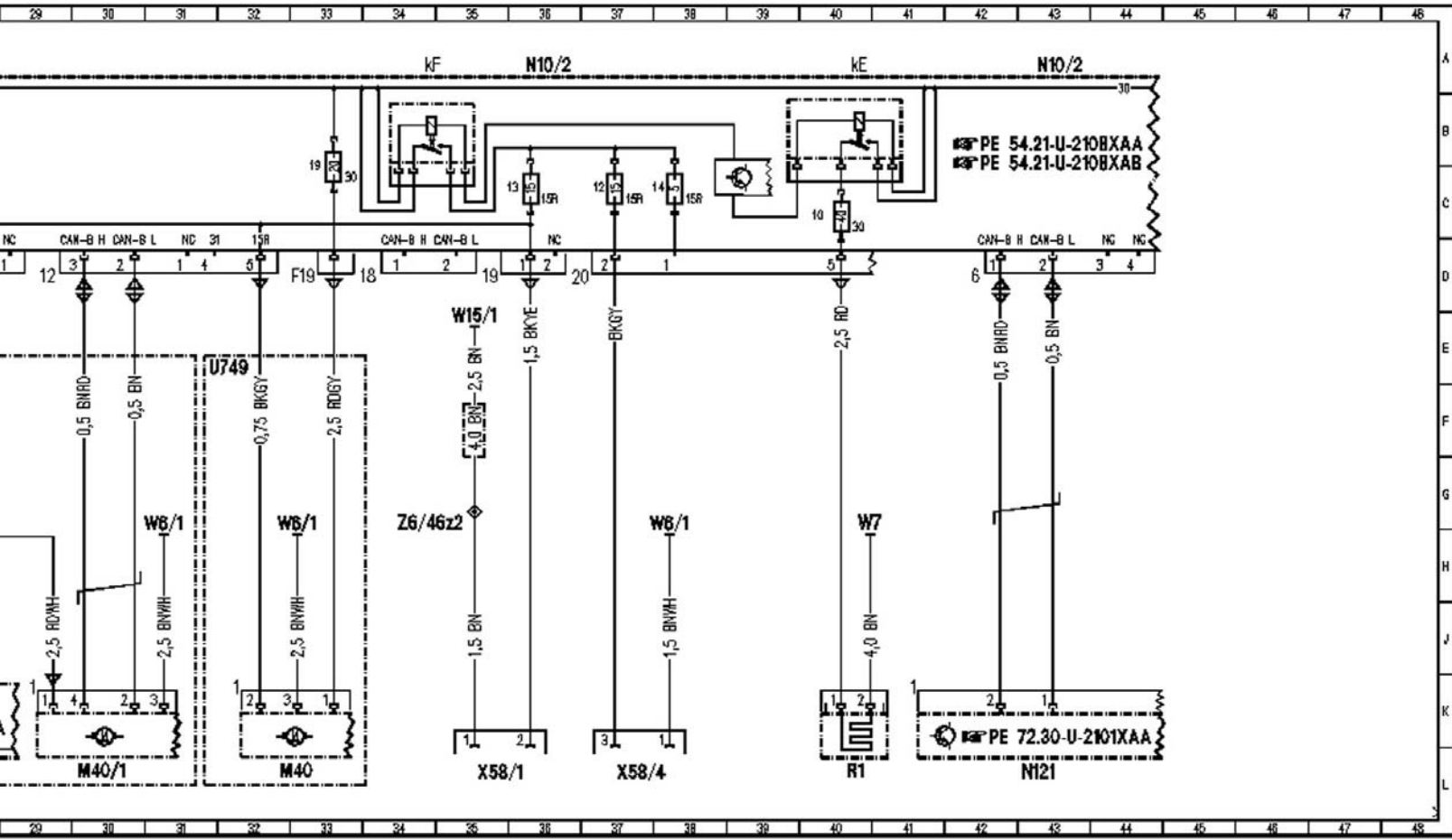
<b>Item</b>	<b>Designation</b>
<u>B95</u>	Battery sensor
<u>F33</u>	Rear prefuse
<u>F33f84</u>	Fuse 84
<u>G1</u>	Battery
<u>M14/10</u>	Fuel filler flap CL motor
<u>M53/1</u>	Left rear head restraint motor
<u>M53/2</u>	Right rear head restraint motor
<u>N10/2</u>	Rear SAM control module with fuse and relay module

<u>N10/2f3</u>	Fuse 3
<u>N10/2f9</u>	Fuse 9
<u>N10/2f15</u>	Fuse 15
<u>N10/2kG</u>	Fuel filler cap polarity change 1 relay
<u>N10/2kH</u>	Fuel filler cap polarity change 2 relay
<u>N41/1</u>	Navigation processor
<u>N62</u>	PTS control module
<u>N70</u>	Overhead control panel control module
<u>N88</u>	TPM control module
<u>S17/3</u>	Left front door contact switch
<u>S17/4</u>	Right front door contact switch
<u>S17/5</u>	Left rear door contact switch
<u>S17/6</u>	Right rear door contact switch
<u>S88/10</u>	Trunk lid emergency release switch
<u>U777</u>	Valid for navigation
<u>W6</u>	Ground (left wheelhousing in trunk)

<u>W10</u>	Ground (battery)
<u>W15/1</u>	Ground (right footwell)
<u>W15/2</u>	Ground (left footwell)
<u>X25/8</u>	Overhead control panel and FFS [RBA] connector
<u>Z6/42</u>	Ground W6 connector sleeve
<u>Z6/42z1</u>	Ground W6 connector sleeve
<u>Z6/46z1</u>	Ground (W15/1) connector sleeve
<u>Z6/47z1</u>	Ground (W15/2) connector sleeve







<b>Item</b>	<b>Designation</b>
<u>A2/64</u>	Left antenna amplifier module
<u>B33</u>	ATA [EDW] inclination sensor
<u>F33</u>	Rear prefuse
<u>F33f87</u>	Fuse 87
<u>H3/1</u>	Alarm signal siren
<u>K74</u>	Rear screen blind relay
<u>M24</u>	Rear window blind motor
<u>M40</u>	Multicontour seat pneumatic pump
<u>M40/1</u>	Pneumatic pump for dynamic seat control
<u>N10/2</u>	Rear SAM control module with fuse and relay module

<u>N10/2f5</u>	Fuse 5
<u>N10/2f6</u>	Fuse 6
<u>N10/2f8</u>	Fuse 8
<u>N10/2f10</u>	Fuse 10
<u>N10/2f12</u>	Fuse 12
<u>N10/2f13</u>	Fuse 13
<u>N10/2f14</u>	Fuse 14
<u>N10/2f16</u>	Fuse 16
<u>N10/2f17</u>	Fuse 17
<u>N10/2f18</u>	Fuse 18
<u>N10/2f19</u>	Fuse 19
<u>N10/2f20</u>	Fuse 20
<u>N10/2kC</u>	Reserve 2 relay
<u>N10/2kE</u>	Rear window defroster relay
<u>N10/2kF</u>	Relay 1, circuit 15R
<u>N93/1</u>	Audio gateway control module
<u>N121</u>	TLC [HDS] control module
<u>R1</u>	Heated rear window
<u>S62</u>	ATA [EDW] hood switch
<u>U90</u>	Valid for Sound System
<u>U749</u>	Valid for multicontour seat (MCS [MKS])
<u>U750</u>	Valid for dynamic seat (DS [FDS])
<u>W6</u>	Ground (left wheelhousing in trunk)
<u>W6/1</u>	Ground (left taillamp in trunk)
<u>W7</u>	Ground (right wheelhousing in trunk)
<u>W15/1</u>	Ground (right footwell)
<u>X18/4</u>	Interior/Sound System connector
<u>X42/30</u>	ATA hood contact connector

<u>X58/1</u>	Interior socket
<u>X58/4</u>	Luggage compartment socket
<u>Z6/46z2</u>	Ground (W15/1) connector sleeve
<u>Z6/49z8</u>	EDW [ATA] ground connector sleeve