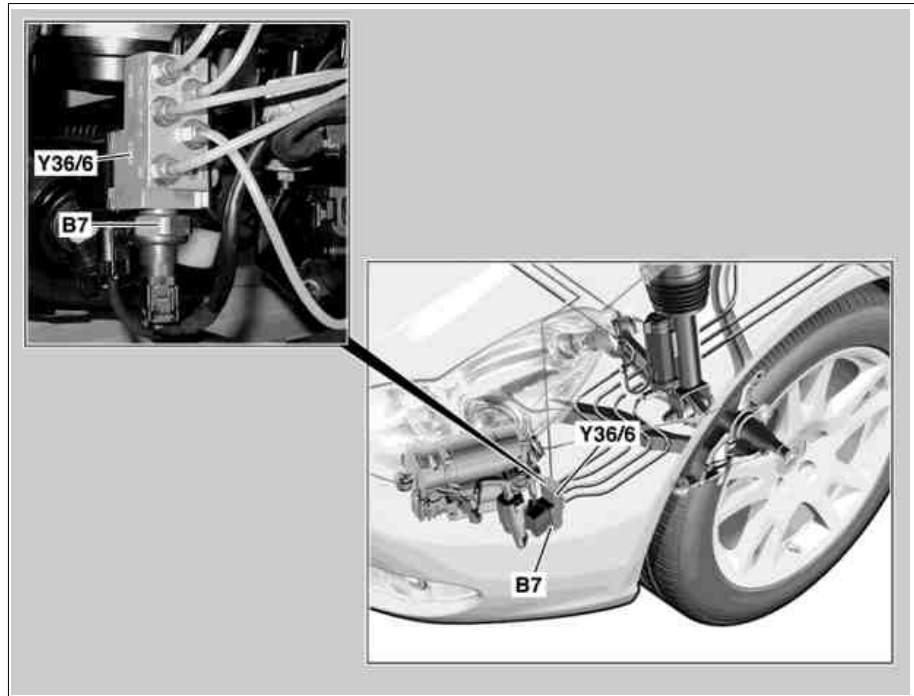


B7 AIRmatic pressure sensor

The AIRmatic pressure sensor (B7) is located on the AIRmatic central reservoir charge valve (Y36/6) which is located in the left wheelhouse below the longitudinal member.



P32.22-2290-06

Task

Records as a priority the system pressure and the central storage pressure.

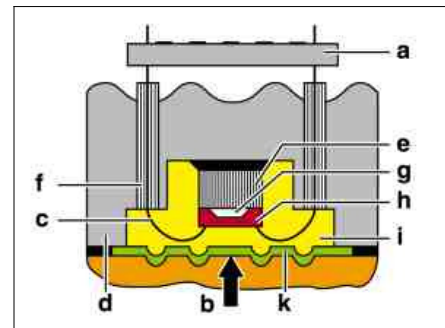
Is used for plausibility checks.

With selected actuation of the individual valves in the suspension struts the pressure of each individual suspension strut can be measured by the AIRmatic pressure sensor .

Example: To sense the pressure in the left front spring strut, the AIRmatic compressor unit (A9/1) must be switched off, the AIRmatic pressure release valve (A9/1y1) closed, the AIRmatic central reservoir charge valve closed and the level valve for the left front spring strut open.

Design

- A Electronics module (hybrid)
- b Air pressure
- C Cable
- d Metal housing
- e Glass body
- F Glass insulation
- G Reference pressure
- H Pressure sensor
- I Silicone oil layer
- K Metal protection diaphragm



P42.45-0220-71

Function

A sensor element compares the air pressure to be measured (b) with a reference pressure (g) in the sensor. The air pressure (b) is transferred to the actual sensor element via a metal protection diaphragm (k) and a silicone oil layer (i).

An electronic module (a) (evaluation circuit) which supplies the pressure signal as an analog voltage to the AIRmatic with ADS control unit (N51) is located on the metal housing.