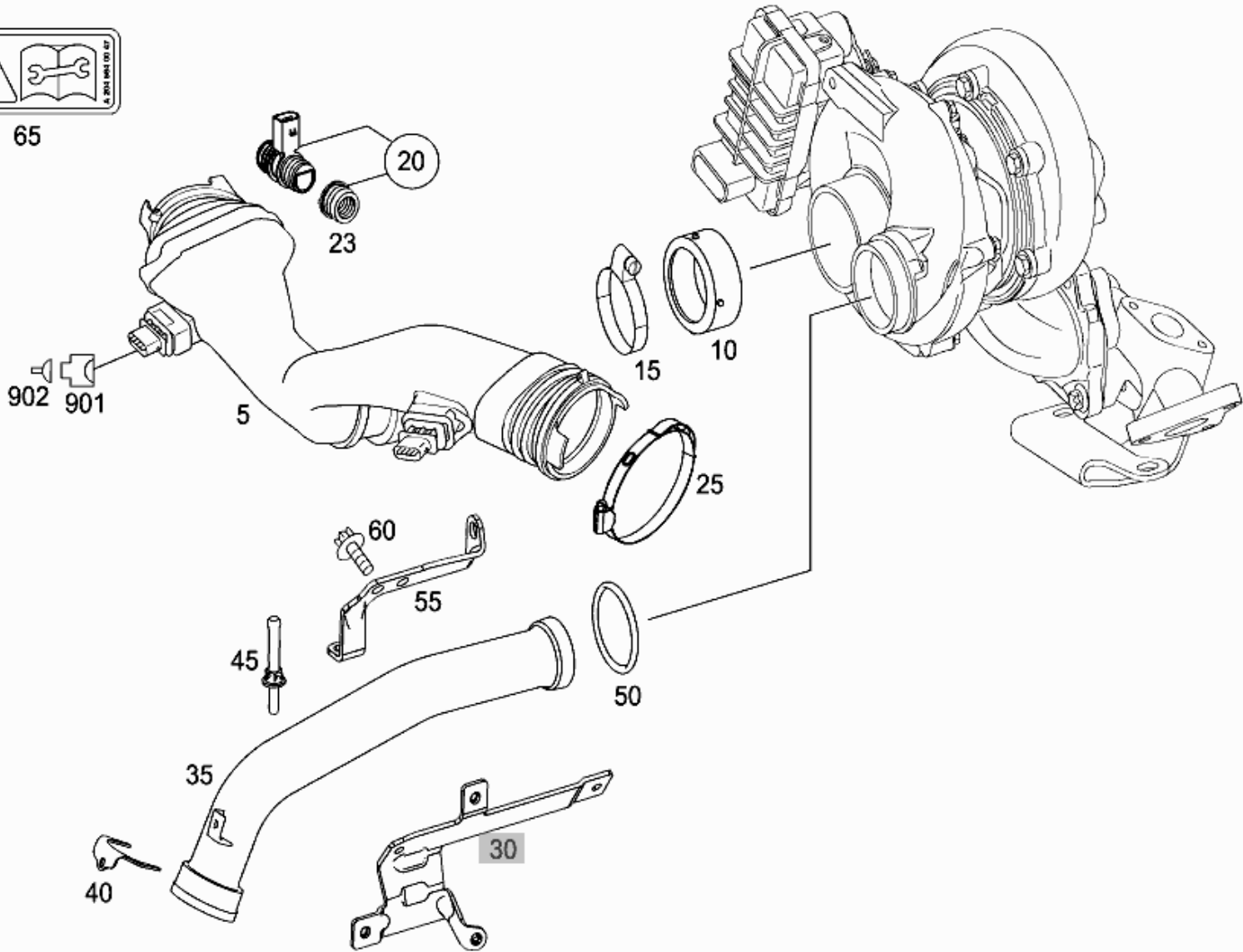


# - Picture -

|                          |                     |                           |                                      |
|--------------------------|---------------------|---------------------------|--------------------------------------|
| <b>Mode</b>              | MD mode             | <b>Mod. des. overview</b> | E SEDAN                              |
| <b>FIN/MD</b>            | 211022              | <b>Catalog</b>            | 63H                                  |
| <b>VIN</b>               |                     | <b>Major assembly</b>     | M - Engine                           |
| <b>Sales designation</b> | E 320 CDI           | <b>Major assembly MD</b>  | 642920                               |
| <b>Assortment class</b>  | Car                 | <b>Group</b>              | 09 - AIR CLEANER AND ENGINE CHARGING |
| <b>Market</b>            | All                 | <b>Subgroup</b>           | 050 - AIR INTAKE                     |
| <b>Picture number</b>    | B09050000004.121207 |                           |                                      |



65



## - Parts list -

|                          |           |                           |                                      |
|--------------------------|-----------|---------------------------|--------------------------------------|
| <b>Mode</b>              | MD mode   | <b>Mod. des. overview</b> | E SEDAN                              |
| <b>FIN/MD</b>            | 211022    | <b>Catalog</b>            | 63H                                  |
| <b>VIN</b>               |           | <b>Major assembly</b>     | M - Engine                           |
| <b>Sales designation</b> | E 320 CDI | <b>Major assembly MD</b>  | 642920                               |
| <b>Assortment class</b>  | Car       | <b>Group</b>              | 09 - AIR CLEANER AND ENGINE CHARGING |
| <b>Market</b>            | All       | <b>Subgroup</b>           | 050 - AIR INTAKE                     |

| Item no. | Part number     | Designation/description  | Quantity | Version |
|----------|-----------------|--|----------|---------|
| 5        | A 642 094 34 97 | <b>CLEAN AIR LINE</b><br>CLEAN AIR DUCT WITH MASS AIR FLOW SENSOR<br><b>Replaced by:</b> A 642 094 63 97   | 001      |         |
| 5        | A 642 094 34 97 | <b>CLEAN AIR LINE</b><br>CLEAN AIR DUCT WITH MASS AIR FLOW SENSOR<br><b>Replaced by:</b> A 642 094 63 97<br>Code: 494  | 001      |         |
| 5        | A 642 094 63 97 | <b>INTAKE LINE</b><br>CLEAN AIR DUCT WITH MASS AIR FLOW SENSOR<br><b>Replaced by:</b> A 642 090 73 37  | 001      |         |
| 5        | A 642 094 63 97 | <b>INTAKE LINE</b><br>CLEAN AIR DUCT WITH MASS AIR FLOW SENSOR<br><b>Replaced by:</b> A 642 090 73 37<br>Code: 494   | 001      |         |
| 5        | A 642 090 73 37 | <b>AIR LINE</b><br>CLEAN AIR DUCT WITH MASS AIR FLOW SENSOR<br><b>Replaced by:</b> A 642 090 74 37<br>+001 A 642 016 03 30   | 001      |         |
| 5        | A 642 090 73 37 | <b>AIR LINE</b><br>CLEAN AIR DUCT WITH MASS AIR FLOW SENSOR<br><b>Replaced by:</b> A 642 090 74 37<br>+001 A 642 016 03 30<br>Code: 494  | 001      |         |
| 5        | A 642 090 74 37 | <b>AIR LINE</b><br>CLEAN AIR DUCT WITH MASS AIR FLOW SENSOR<br><b>Replaced by:</b> A 642 090 82 37   | 001      |         |
| 5        | A 642 090 74 37 | <b>AIR LINE</b><br>CLEAN AIR DUCT WITH MASS AIR FLOW SENSOR<br><b>Replaced by:</b> A 642 090 82 37<br>Code: 494  | 001      |         |
| 5        | A 642 090 82 37 | <b>CLEAN AIR LINE</b><br>CLEAN AIR DUCT WITH MASS AIR FLOW SENSOR  | 001      |         |
| 5        | A 642 090 82 37 | <b>CLEAN AIR LINE</b><br>CLEAN AIR DUCT WITH MASS AIR FLOW SENSOR<br>Code: 494   | 001      |         |
| 5        | A 642 090 74 37 | <b>AIR LINE</b><br>CLEAN AIR DUCT WITH MASS AIR FLOW SENSOR<br><b>Replaced by:</b> A 642 090 82 37<br>Code: U43/U83  | 001      |         |
| 5        | A 642 090 60 37 | <b>CLEAN AIR LINE</b><br>CLEAN AIR DUCT WITH MASS AIR FLOW SENSOR<br><b>Replaced by:</b> A 642 090 74 37<br>Code: U43/U83  | 001      |         |
| 10       | A 017 997 40 45 | <b>SEAL RING</b><br>INDUCTION LINE TO COMPRESSOR TO A<br>642 094 63 97, A 642 090 60 37<br> [002] To Engine: 40153203 To Date: 01/06/2006 | 001      |         |

|     |                 |   |     |
|-----|-----------------|---|-----|
| 10  | A 642 094 00 80 | . <b>SEAL</b><br>INDUCTION LINE TO COMPRESSOR TO A<br>642094 63 97, A 642090 60 37,8237<br>[003, 004] From Engine: 40153204 From Date: 01/06/2006 | 001 |
| 10  | A 642 094 04 80 | . <b>GASKET</b><br>INDUCTION LINE TO COMPRESSOR TO A<br>6420907337, 74 37<br>[005] From Engine: 40778086 From Date: 07/07/2008                    | 001 |
| 15  | A 006 997 27 90 | . <b>CLAMP W DRIVE A WASHER</b><br>CLEAN AIR LINE AT CHARGER 60-80 MM   | 001 |
| 20  | A 642 016 02 30 | . <b>TS BREATHER PIPE</b><br>PARTS KIT<br><b>Replaced by:</b> A 642 016 03 30   | 001 |
| 20  | A 642 016 03 30 | . <b>PIPE</b><br>PARTS KIT  | 001 |
| 23  | A 642 094 05 80 | . . <b>SEAL F CLEAN AIR LINE</b>  | 001 |
| 25  | A 000 995 97 10 | . <b>HOSE CLAMP</b>   | 002 |
| 35  | A 642 098 07 07 | <b>CHARGING AIR LINE</b><br><b>Replaced by:</b> A 642 098 21 07<br><b>Optional with:</b> A 642 090 84 37<br><b>Optional with:</b> A 642 098 23 07 | 001 |
| 35  | A 642 098 21 07 | <b>AIR MANIFOLD</b><br><b>Optional with:</b> A 642 090 84 37<br><b>Optional with:</b> A 642 098 23 07   | 001 |
| 35  | A 642 098 23 07 | <b>AIR MANIFOLD</b><br><b>Replaced by:</b> A 642 090 84 37<br><b>Optional with:</b> A 642 098 07 07<br><b>Optional with:</b> A 642 098 21 07      | 001 |
| 35  | A 642 090 84 37 | <b>AIR MANIFOLD</b><br><b>Optional with:</b> A 642 098 07 07<br><b>Optional with:</b> A 642 098 21 07   | 001 |
| 40  | Q 0000000001    | <b>IMPORTANT INFORMATION</b><br>SEE CHASSIS SCOPE, GROUP/TECHNICAL<br>SCOPE: 50/200   | 001 |
| 45  | A 000 993 13 60 | <b>BALL PIN</b>   | 001 |
| 50  | A 014 997 64 45 | <b>O-RING</b>   | 001 |
| 55  | A 642 096 04 45 | <b>STANCHION</b><br><b>Replaced by:</b> A 642 096 06 45<br>+004 N 000000 004410   | 001 |
| 55  | A 642 096 06 45 | <b>SUPPORT</b>  | 001 |
| 60  | N 910143 006000 | <b>HEXALOBULAR BOLT</b><br>STAY TO CHARGE AIR DISTRIBUTOR<br>LINE M6X12<br>[008] To Engine: 40017526 To Date: 06/05/2005                          | 003 |
| 60  | N 910143 006001 | <b>HEXALOBULAR BOLT</b><br>STAY TO CHARGE AIR DISTRIBUTOR<br>LINE M6X16<br>[009] From Engine: 40017527 From Date: 06/05/2005                      | 004 |
| 65  | A 204 584 00 47 | <b>WARNING STRIP</b><br>HIGH TENSION  | 001 |
| 901 | A 203 545 36 28 | <b>CLUTCH</b><br>AIR-MASS SENSOR 4-PIN;B2/7   | 001 |
| 902 | A 009 545 81 26 | <b>CONTACT SPRING</b><br>0.75-1.0 MM2 SLK2.8  | NB  |
| 902 | A 000 545 28 39 | <b>CORE BUNDLE SEALING</b><br>0.5-1.0 MM  | NB  |
| 902 | A 000 545 29 39 | <b>CORE BUNDLE SEALING</b><br>1.0-2.5 MM  | NB  |