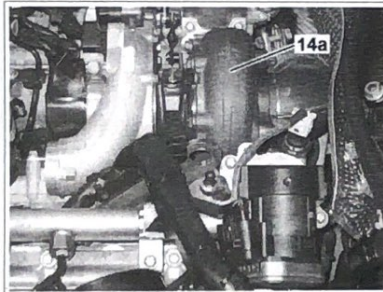


P14.10-2105-09

- 1 Shields
 - 2 Right exhaust manifold
 - 3 Left exhaust manifold
 - 4 Exhaust gas recirculation line
 - 5 Bolts
 - 6 Exhaust collector pipe
 - 7 Bolts
 - 9 Bolts
 - 10 Flanged pipe
 - 11 Bolt
 - 12 Primary catalytic converter
 - 13 Bolts
 - 14 Vacuum line
 - 15 Rubber mount
 - 16 Power steering expansion reservoir
 - 17 Clamp
- B60 Exhaust back pressure sensor

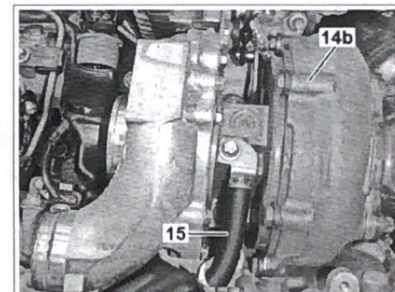


Turbocharger without coolant cooling

14a Turbocharger

Turbocharger with coolant cooling

14b Turbocharger
15 Coolant line



P09.40-2385-01

P09.40-2386-01

⊗ ⊗	Remove/install		
	Risk of injury caused by fingers being pinched or crushed when removing, installing or aligning hoods, doors, trunk lids, liftgates or sliding roof	Keep body parts and limbs well clear of moving parts.	AS00.00-Z-0011-01A
Ⓢ	Notes on self-locking nuts and bolts		AH00.00-N-0001-01A
	Risk of explosion caused by escaping oxyhydrogen gas. Risk of injury caused by caustic burns to eyes, skin and mucous membranes from battery electrolyte (contains diluted sulfuric acid) or metal spatter due to short circuit. Risk of burn injuries caused by short circuit. Risk of poisoning caused by swallowing battery electrolyte (contains diluted sulfuric acid) or absorption of lead over the skin or orifices	No fire, sparks, open flames or smoking. Wear acid-resistant gloves and clothing and safety glasses with side guards. Do not place any conductive objects on the battery and avoid any short circuit from battery positive to ground. Only fill liquid battery electrolyte (diluted sulfuric acid) into suitable and appropriately marked containers.	AS54.10-Z-0001-01A
1	Detach ground line from battery	Model 164 Model 251	AR54.10-P-0003GZ AR54.10-P-0003RT
Ⓢ	Notes on battery		AH54.10-P-0001-01A
2	Remove winer system	Model 251	AR82.30-P-6400RT

		Model 251 Left side: Model 164 Model 251	AR09.10-P-1150RTC AR09.10-P-1150GZB AR09.10-P-1150RTB
4	Remove heat shield from turbocharger		
5	Disconnect electrical connector from exhaust back pressure sensor (B60)	With code (474) Particulate filter	
6	Remove exhaust back pressure sensor (B60)	With code (474) Particulate filter	
7	Remove exhaust gas recirculation positioner		AR14.20-P-1020GZB
8	Unscrew bolts (13) from power steering expansion reservoir (16)	Without electrohydraulic P/S (EHPS) i Push power steering expansion reservoir (16) with connected oil lines slightly to one side. Model 164 Model 251	AR46.25-P-1000GZB AR46.25-P-1000RTA
9	Remove the vacuum line (14) from out of the rubber support (15)		
10	Remove collar clamp (17)	Model 164 Nm	*BA49.10-P-1006-01U
		Model 164 Nm	*BA49.10-P-1021-01U
		Model 251 Nm	*BA49.10-P-1014-01X
		Model 251 Nm	*BA49.10-P-1022-01X
11	Remove the flanged pipe (10)	i To do this, remove the top bolts (9) but only loosen bottom bolt (11). The flanged pipe (10) is slotted at the bottom attachment point. Nm	*BA09.40-P-1012-01K
12	Remove exhaust gas recirculation line (4)	i For engines with turbocharger (14b) with coolant cooling a clamp is installed instead of bolts (6) (EGR line (4) on exhaust collector pipe ()). i Installation: Replace the gaskets. Nm Nm Nm	*BA14.20-P-1003-01G *BA14.20-P-1004-01G *BA14.20-P-1013-01G
13	Remove bolts (5) from exhaust collector (6)	Nm	*BA14.10-P-1001-01L
14.1	Remove primary catalytic converter (12)	With code (474) Particulate filter i Only when removing right exhaust manifold (2).	AR49.10-P-7100GZB
14.2	Remove exhaust pipe	Except code (474) Particulate Filter	
14.3	Remove exhaust pipe on flange pipe (10) from catalytic converter diesel particulate filter unit	Vehicles with catalytic converter diesel particulate filter unit Nm Nm	*BA49.10-P-1022-01X *BA49.10-P-1023-01X
15	Remove shields (1)	On vehicles with coolant-cooled turbocharger (14b), the shield (1) consists of two elements.	
16	Unscrew self-locking nuts from right exhaust manifold (2)	i Installation: Install new self-locking nuts. i Installation: Check studs, replace if necessary. Nm	*BA14.10-P-1002-01L
17	Unscrew self-locking nuts from left exhaust manifold (3)	i Installation: Install new self-locking nuts. i Installation: Check studs, replace if necessary. Nm	*BA14.10-P-1002-01L
18	Remove right exhaust manifold along with seal (2) from cylinder head	i Installation: Clean sealing surfaces and install new seals.	
19	Remove left exhaust manifold along with seal (3) from cylinder head	i Installation: Clean sealing surfaces and install new seals.	
20	Install in the reverse order		
	Risk of accident caused by vehicle starting off by itself when engine is running. Risk of injury caused by contusions and burns during	Secure vehicle to prevent it from moving by itself. Wear closed and snug-fitting work clothes.	AS00.00-Z-0005-01A

21	Test run engine and check exhaust system for leaks	
----	--	--

Nm Turbocharger

Number	Designation	Engine 642
BA09.40-P-1012-01K	Exhaust line to turbocharger	Nm 20

Nm Exhaust manifold

Number	Designation	Engine 642
BA14.10-P-1001-01L	Flange connection, exhaust manifold/front exhaust pipes to exhaust collector	Stage 1 Nm 20
		Stage 2 Δ° 90
BA14.10-P-1002-01L	Nut, exhaust manifold to cylinder head	Nm 25

Nm Exhaust gas recirculation

Number	Designation	Engine 642.82/83/ 85/86/87/ 886/9
BA14.20-P-1003-01G	Exhaust gas recirculation pipe to charge air distribution line	Nm 13
BA14.20-P-1004-01G	Exhaust gas recirculation pipe to exhaust collector pipe	Stage 1 Nm 10
		Stage 2 Δ° 90
BA14.20-P-1013-01G	Clamp, exhaust gas recirculation pipe to exhaust collector pipe	Nm 9

Nm Exhaust system

Number	Designation	Engine 642 in model 164 without code U42
BA49.10-P-1006-01U	Bolt, turbocharger hose clamp to primary catalytic converter	Nm 20

Nm Exhaust system

Number	Designation	Engine 642 in model 164 with code U42
BA49.10-P-1021-01U	Bolt, exhaust pipe clamp with flange to exhaust pipe	Nm 15

Nm Exhaust system

Number	Designation	Engine 642 in model 251 without code 928/ U42
BA49.10-P-1014-01X	Bolt, clamp for turbocharger/exhaust pipe to primary catalytic converter	Nm 20

Nm Exhaust system

Number	Designation	Engine 642 in model 251 with code 928/ U42
BA49.10-P-1022-01X	Bolt, exhaust pipe clamp with flange to exhaust pipe	Nm 15
BA49.10-P-1023-01X	Bolt, exhaust pipe clamp to diesel particulate filter	Nm 15