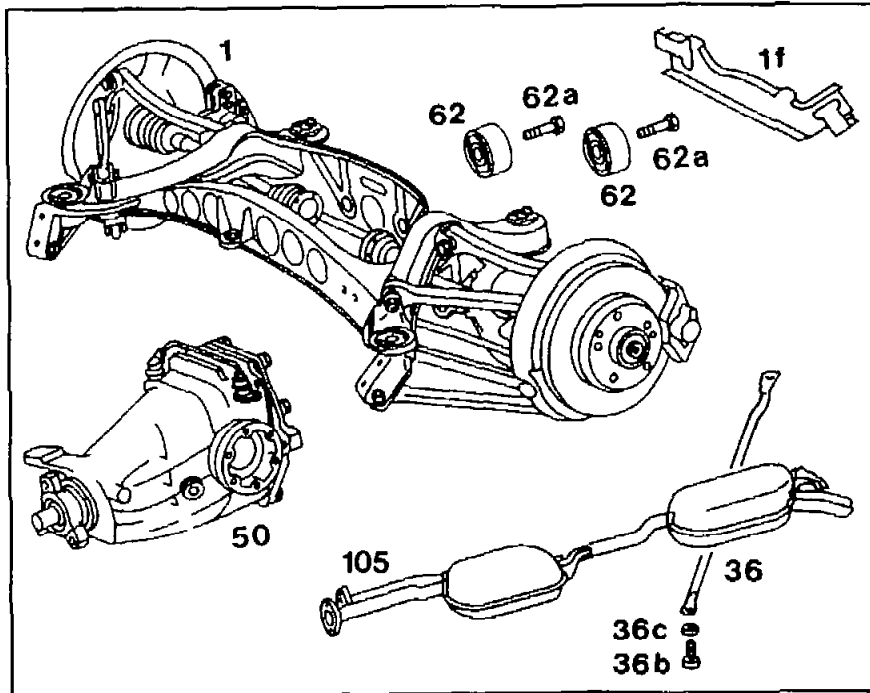


## 35-050 Removal and installation of rear rubber mounts for center assembly mounting in rear axle bracket

Operation no. of operation texts and work units  
or standard texts and flat rates:  
35-0097, 35-0098

### A. Model 124 (except model 124.034/036)



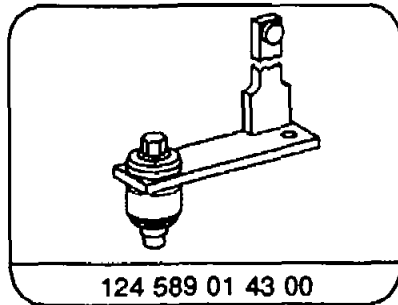
P35-5452-35

|                                      |  |
|--------------------------------------|--|
| Exhaust system .....                 | remove, install (49-100).  |
| Rear axle center assembly (50) ..... | Remove, install (35-520, number 1).  |
| <b>Vehicles with ASR</b>             |  |
| Cable rail (1f) .....                | Remove, install for brake lining wear indicator (number 2).  |
| Rubber mount (62) .....              | Withdraw, pull in. Withdraw extractor/pulling-in equipment 124 589 01 43 00 towards the front with thrust piece 124 589 01 43 00 part 02 and pull in towards the rear using thrust piece part 01 (number 3). |

#### Note

When installed, the relieved section of rubber mounts point downwards (number 3 installation note).

## Special tools



## Note

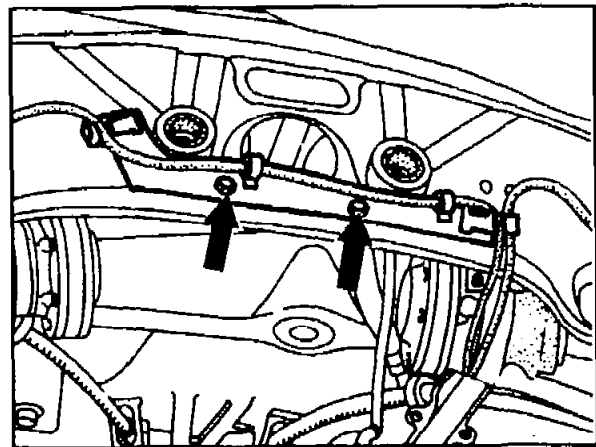
The rubber mounts can be removed and installed when the rear axle is installed.

## Removal, installation

1 Remove, install rear axle center assembly (35-520).

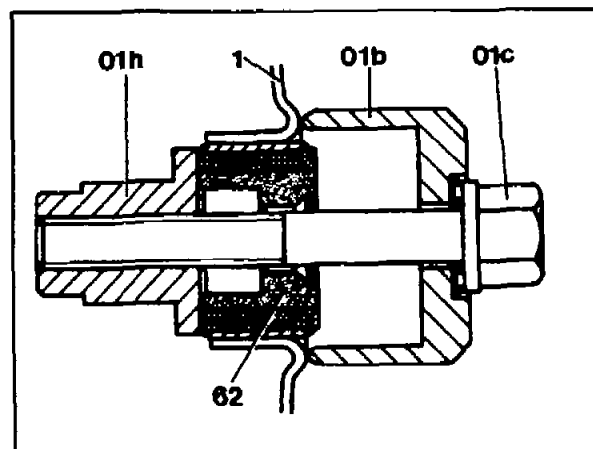
### 2 Vehicle with ASR

Loosen cable rail for brake lining wear indicator and allow it to hang down (arrows).



P35-5470-13

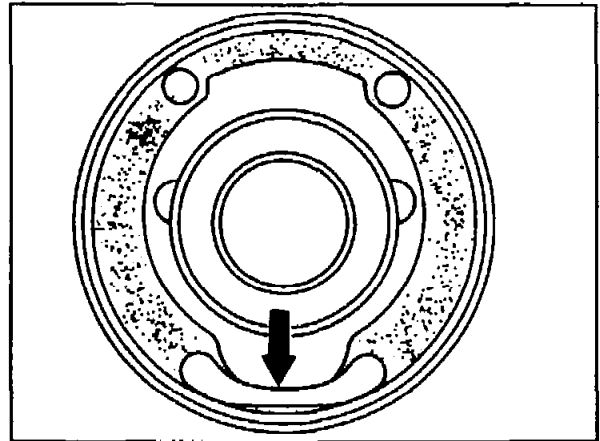
3 Pull out rubber mount (62) forwards out of cross member (1) of rear axle bracket using extractor/pulling-in equipment 124 589 01 43 00 (01b, 01c, 01h).



P35-5453-13

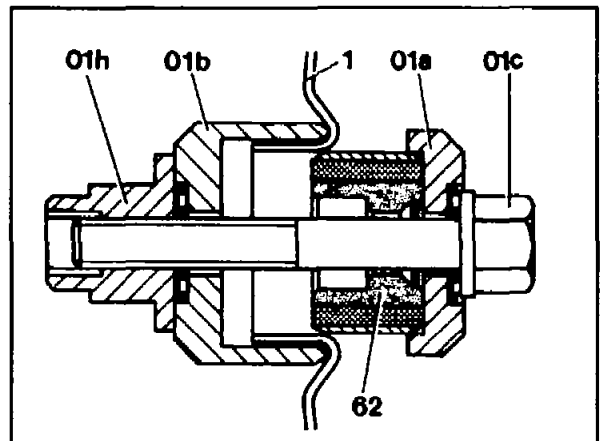
**Installation note**

Install rubber mount with relieved section (kidney-shaped, arrow) pointing vertically downwards.



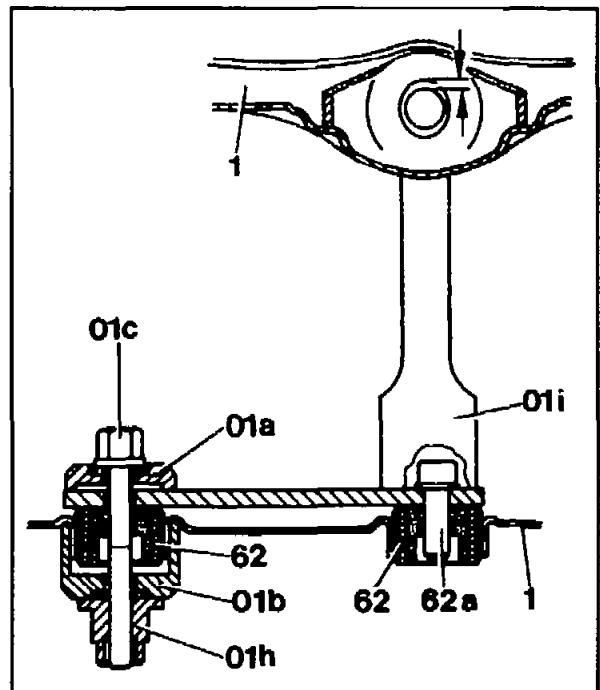
P35-5600-13

Pull in right rubber mount (62) using pulling-in equipment 124 589 01 43 00 (01b, 01c, 01h) from front to rear in the rear axle cross member (1) until the thrust piece (01a) contacts the cross member.



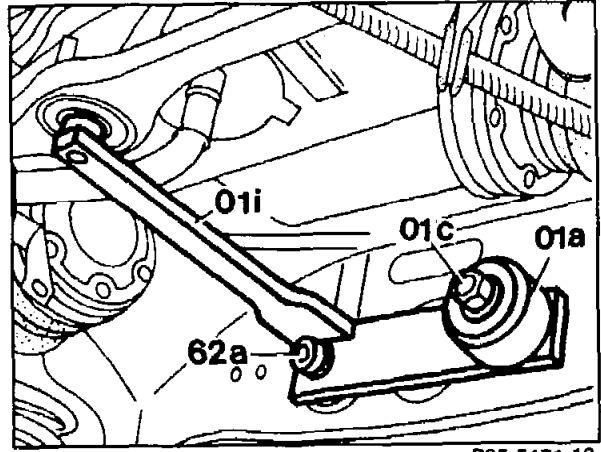
P35-5454-13

Pull in left rubber mount (62) in association with test arm (01i) of the extractor/pulling-in equipment 124 589 01 43 00 until the pin (arrows) is located in the center of the front oval bore.



P35-5455-15

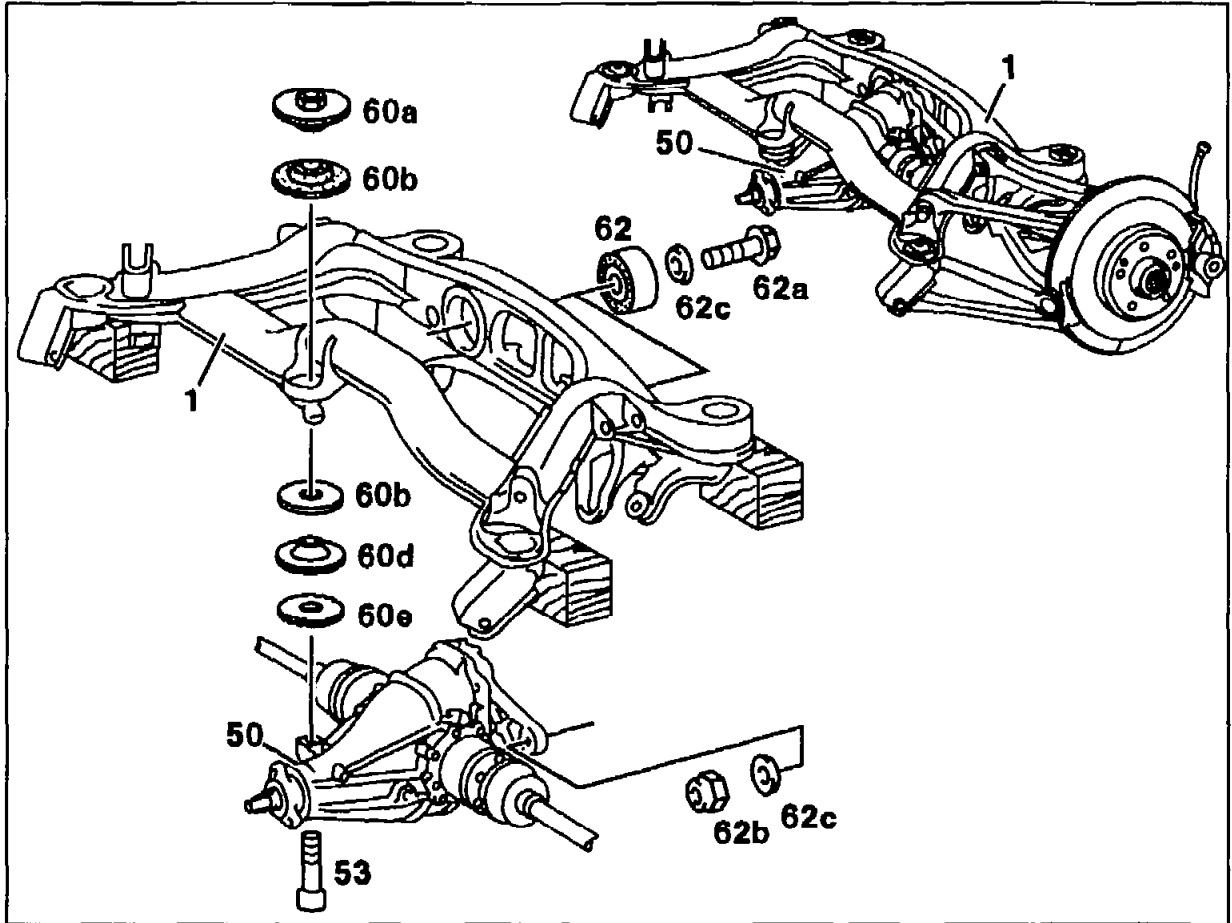
To locate the test arm (01i), a hexagon socket bolt (62a) of the center assembly fixing is to be inserted into the bore of the rubber mount.



P35-5471-13

4 Install in reverse sequence.

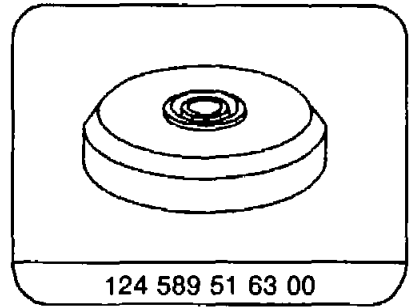
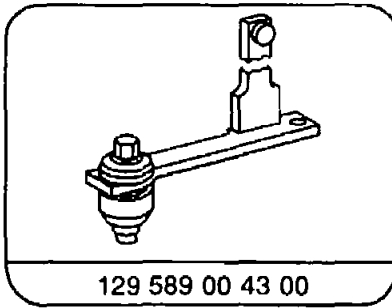
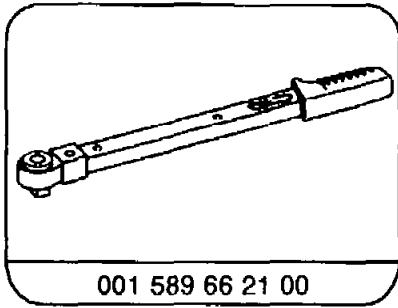
**B. Model 124.034/036**



P35-5902-57

|  |  |
|--|--|
| Complete rear axle .....                     | remove, install (35-010).  |
| Rear axle center assembly, rear mount .....  | remove from rear axle bracket, install. Replace self-locking hexagon nut (62b), 95 Nm. Torque wrench 001 589 66 21 00 (number 1).                                    |
| Rear axle center assembly, front mount ..... | remove, install. Replace self-locking hexagon socket bolt (53), 45 Nm. Torque wrench 001 589 66 21 00 (number 2).  |
| Rear axle bracket (1) .....                  | lift approx. 250 mm, lower and support with wood block (number 3).   |
| Rubber mount (62) .....                      | remove, install with extractor/pulling-in equipment 129 589 00 43 00 and thrust piece 124 589 51 63 00 (number 4). Check installation of center assembly (number 5). |

## Special tools

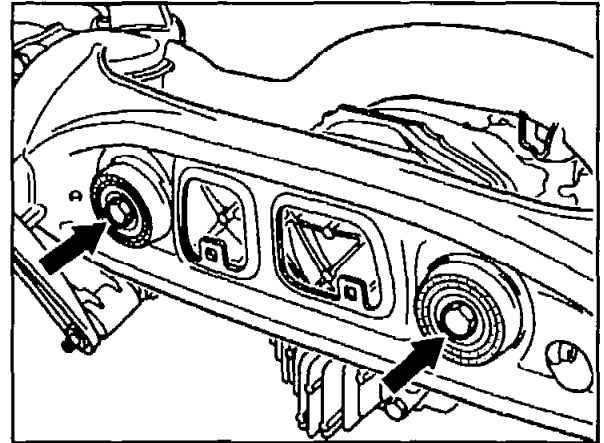


### Removal, Installation

1 Remove rear center assembly mount on rear axle bracket (arrows).

#### Installation note

Replace self-locking hexagon nuts, 95 Nm.  
Torque wrench 001 589 66 21 00.

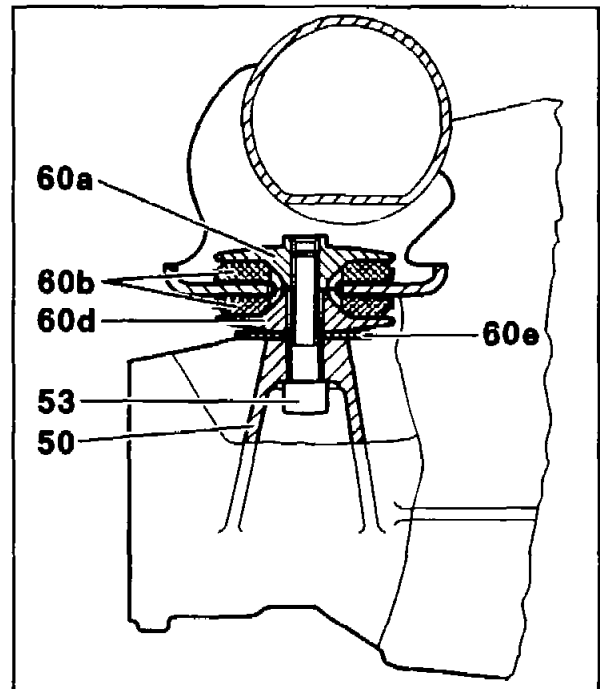


P35-5833-13

2 Loosen front hexagon socket bolt (53) for fastening rear axle center assembly (50) to rear axle bracket and remove with suspension parts (53, 60a-60e).

#### Installation note

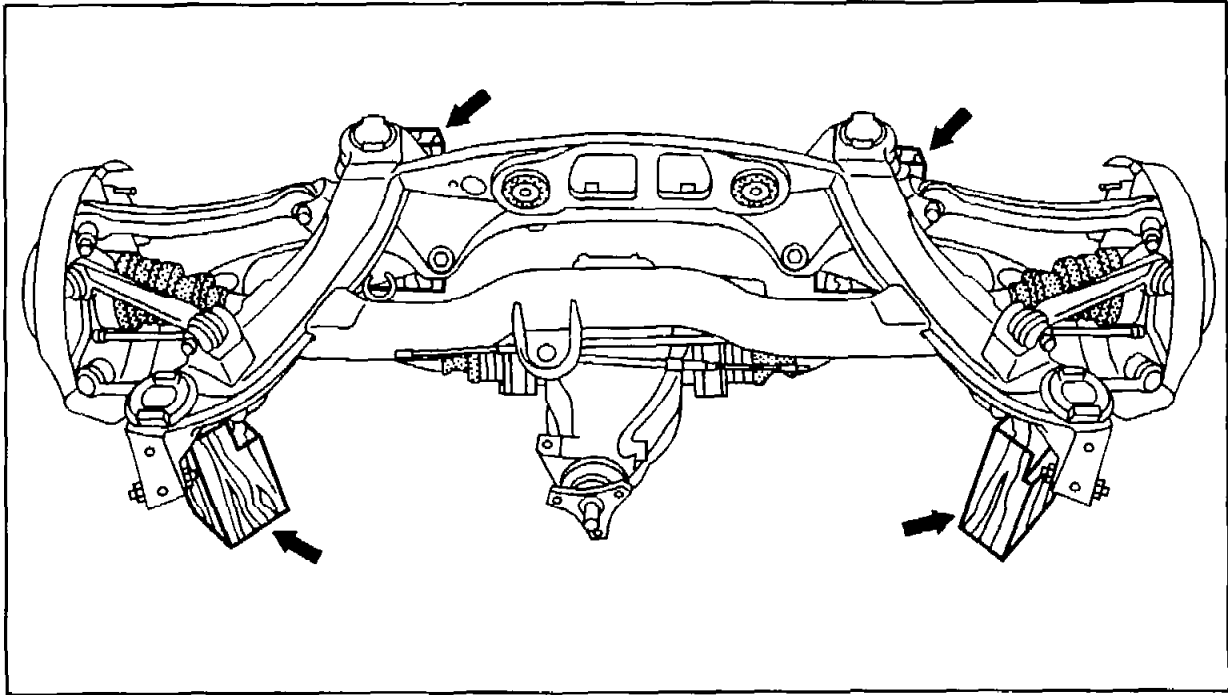
Install appropriate shims (60e, with notches) toward rear axle bracket.  
Replace self-locking hexagon socket bolt.  
Tightening torque 45 Nm.  
Torque wrench 001 589 66 21 00.



P35-5851-15

- 50 Rear axle center assembly
- 53 Self-locking hexagon socket bolt
- 60a Plate with integrated hexagon shank
- 60b Rubber mount
- 60d Plate
- 60e Shim

3 Lift rear axle bracket approx. 250 mm.  
Position wood blocks of corresponding height  
below the four mounting points on the rear axle  
bracket (arrows).

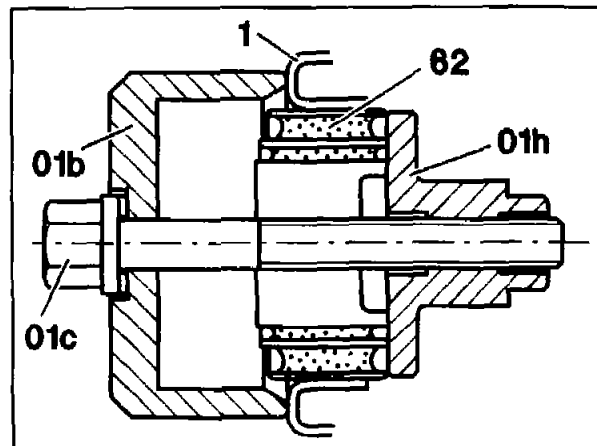


P35-5832-55

4 Pull both rubber mounts (62) out of rear axle  
bracket toward rear with extractor/pulling-in  
equipment 129 589 00 43 00, part 01 and 03  
(01b, 01c and 01h).

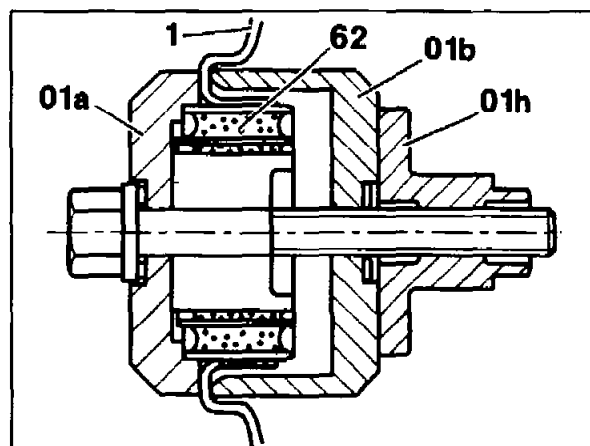
**Installation note**

Replace rubber mounts (62).



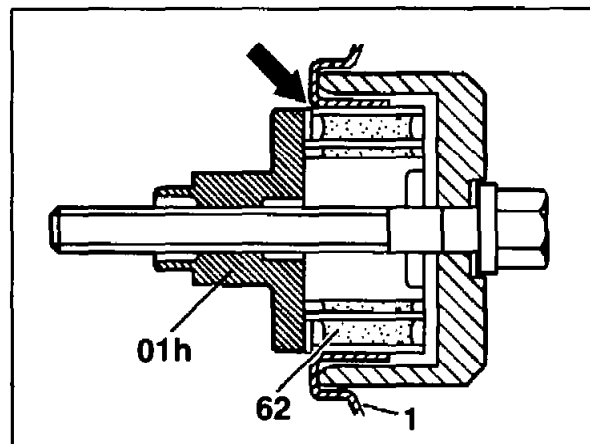
P35-5736-13

5 Install right rubber mount (62) in rear axle bracket from rear toward front with extractor/pulling-in equipment 129 589 00 43 00, part 01 and 03 and thrust piece 124 589 51 63 00. Pull in until thrust piece (01a) makes contact with rear axle bracket (01a, 01b and 01h).



P35-5737-13

6 Pull left rubber mount (62) in from rear toward front with extractor/pulling-in equipment 129 589 00 43 00 until hexagon collar nut (01h) is flush with cross member (1, arrow).

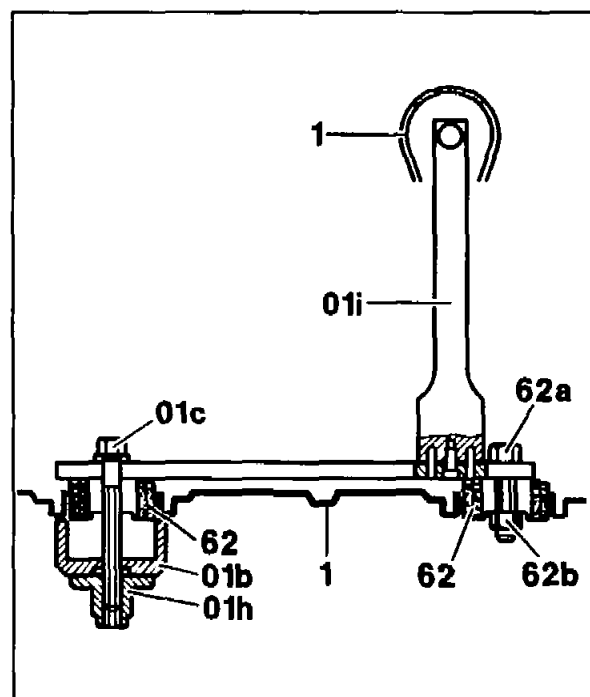


P35-5900-13

7 Check installed position of center element in rear axle bracket with gauge (01i) of extractor/pulling-in equipment 129 589 00 43 00, part 05, 06.

#### Installation note

Attach gauge (01i) to right side with hexagon bolt (62a) and hexagon nut (62b) and tighten lightly. Install left side with extractor/pulling-in equipment, part 01 and 03 (01b, 01c and 01h).



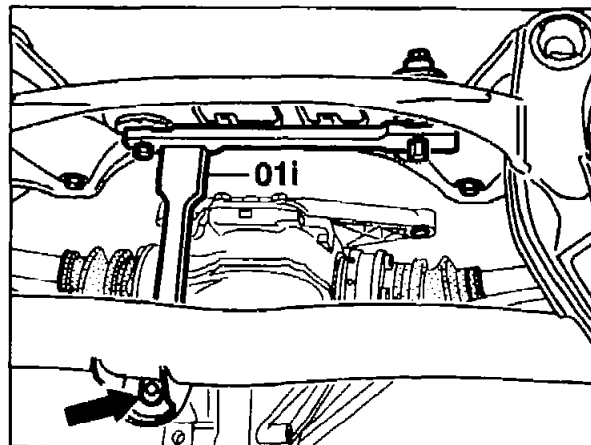
P35-5852-15



Then pull left rubber mount into rear axle bracket until the bolt on the gauge arm (01i) is located in the center of the front hole on the rear axle cross member (arrow).

8 Remove gauge.

9 Reinstall in opposite order.



P35-5834-13