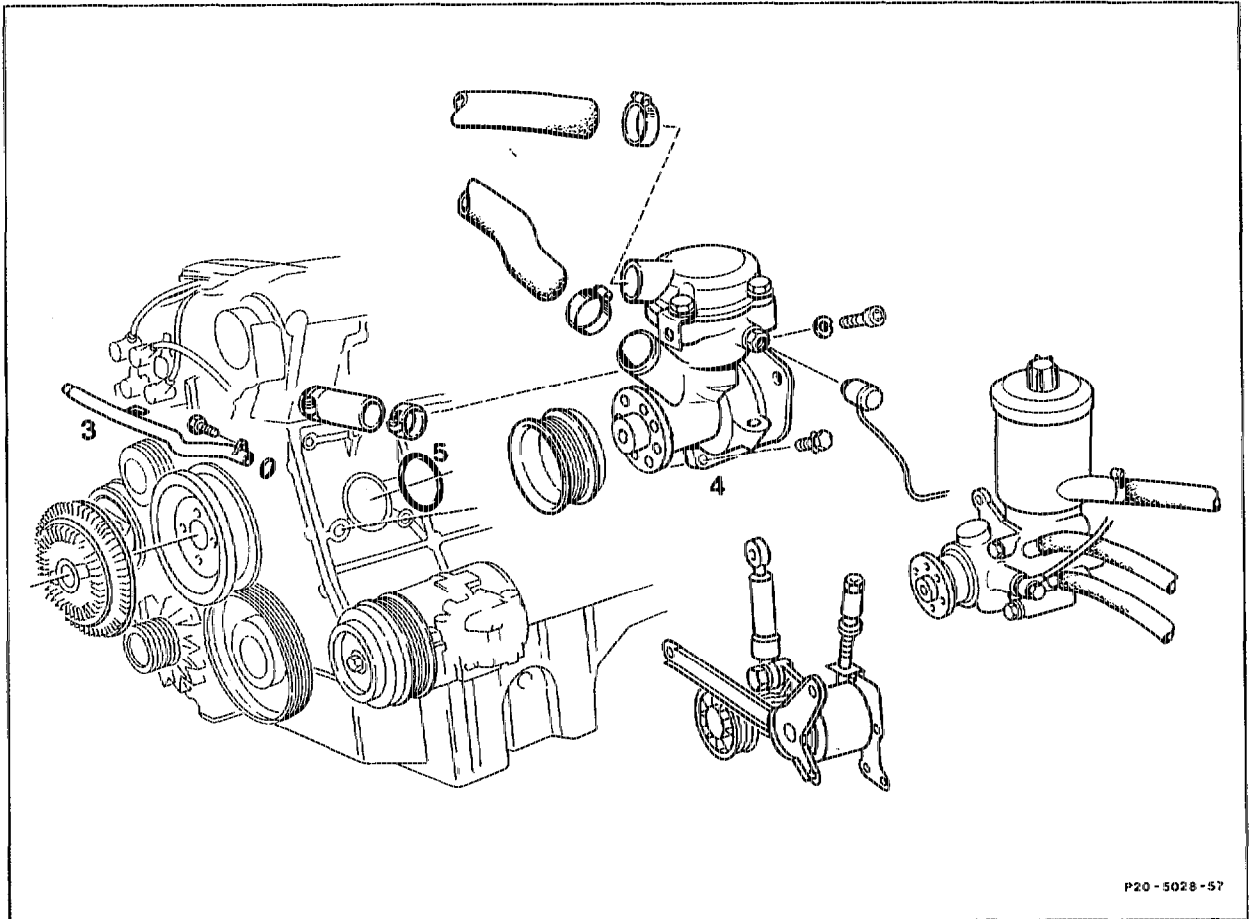


## 20-2100 Removing and installing coolant pump

Operation no. of operation texts and work units or standard texts  
and flat rates:  
20-1270-2351

### A. Models 124, 129 with engine 104.98



P20-5028-57

Ground cable at battery .....	disconnect, connect.
Coolant at engine and at radiator .....	drain, pour in (20-0100).
Intake air scoop .....	remove, install.
Tensioning device .....	remove, install (13-3200).
Power steering pump .....	remove with pipes connected, install (25 Nm).
Engine 104.98: .....	unbolt return pipe (3), bolt on (step 7), replace seal.
Coolant hoses .....	detach, attach.
Coolant pump (4) .....	remove, install, replace seal (step 9).
Leaktightness .....	check.

### Tightening torques in Nm

Bolt of coolant pump to crankcase	25
Belt pulley of viscous fan to hub	15
M12 bolt of tensioning device for poly V-belt	75
Belt pulley to power steering pump	32
Belt pulley to coolant pump shaft	32
Thermostat housing to coolant pump	9

### Commercially available tools

Hexagon socket wrench with 6 mm joint, 3/8"

7 mm socket wrench hexagon on flexible shaft for hose clip with worm drive

e. g. Hazet  
428530 Remscheid  
Order no. 426-7

### Removing, installing

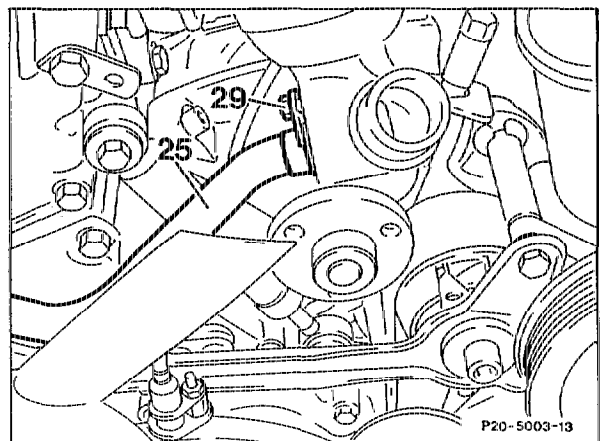
- 1 Disconnect ground cable at battery.
- 2 Drain coolant at engine and at radiator (20-0100).
- 3 Pull air scoop off the air cleaner and remove.
- 4 Remove tensioning device for poly V-belt (13-3200).
- 5 Remove power steering pump with lines/ wiring connected and place to the side.

### Engine 104.98

6 Slacken bolt (29) of heating water return pipe. Pull heating water return pipe (25) out of coolant pump and place to the side. Detach coolant hoses. Pull ignition cable off bracket.

### Installation note

Replace seal of heating water return pipe.



7 When replacing the coolant pump, switch over coolant thermostat (20-1100).

**Installation note**

The thermostat must be installed so that the ball valve is at the highest point (20-1100). Install new seal.

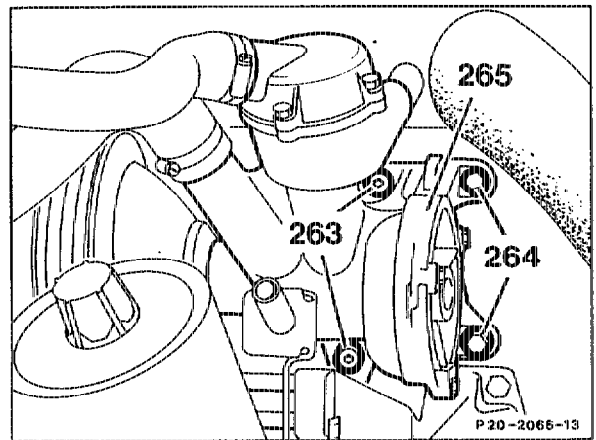
8 Unscrew bolts (263, 264) at the crankcase. Remove coolant pump (265).

**Installation note**

Replace seal of coolant pump.

9 Install in reverse order.

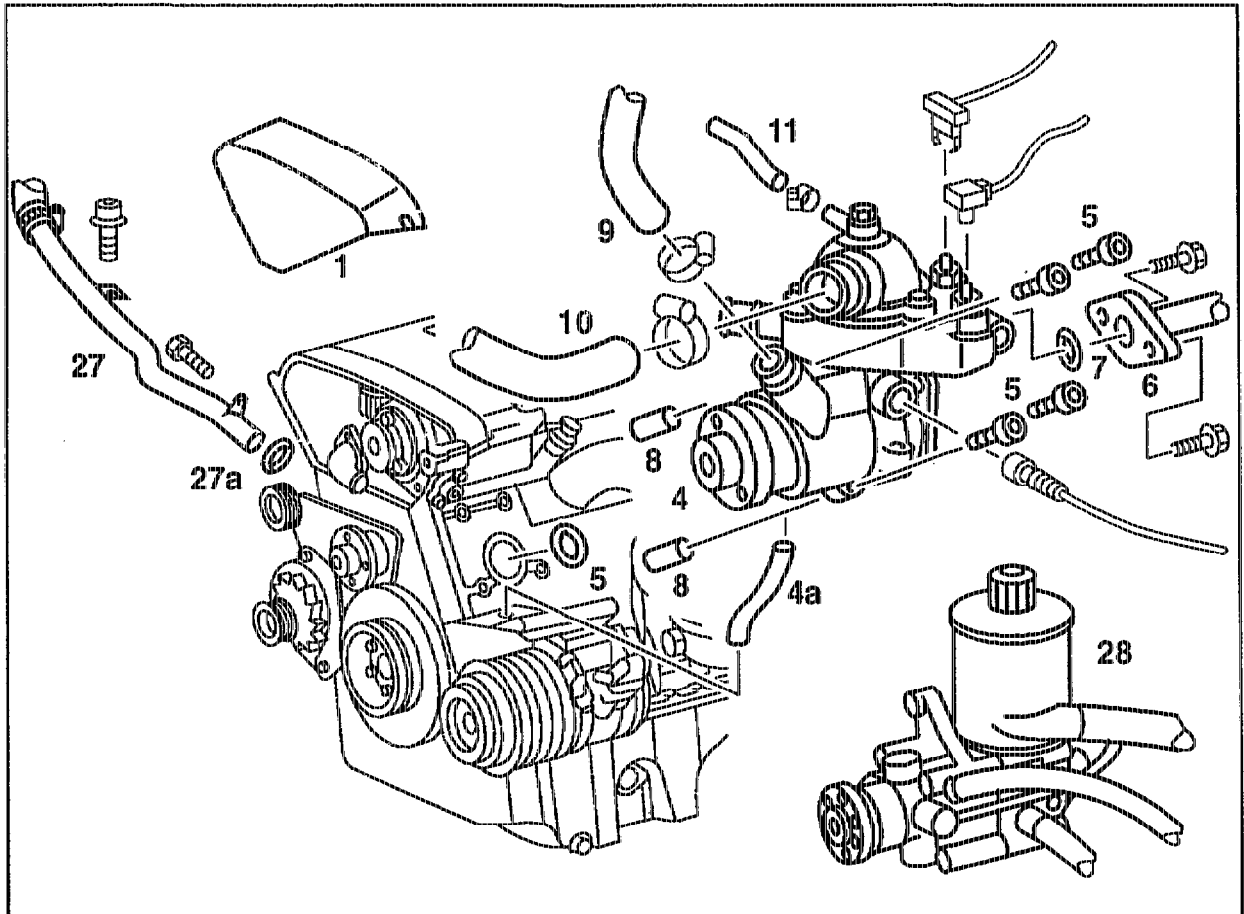
10 Check for leaks.



## B. Models 202, 210

Preceding work:  
 Model 202 with tensioning device 1st version:  
 Tensioning device removed (13-3200).  
 Model 202: Dipstick guide tube removed (18-3510)

Operation no. of operation texts and work units or standard texts  
 and flat rates:  
 20-1270, 20-2351



P20-5312-57

Model 210: .....	remove poly V-belt (13-1200).
Model 210: .....	unbolt power steering pump (28) with pipes connected.
Power steering pump (28) with pipes connected .....	swivel to the side.
Coolant at radiator and at crankcase .....	drain (20-0100).
Cover (1) at front .....	remove, install.
Electrical connectors at coolant pump .....	unplug, plug in.
Heating water return pipe (27) at coolant pump (4) and viscous fan bearing bracket .....	unbolt, bolt on, replace seal (27a).
Coolant pipe (6) to oil-to-water heat exchanger ..	unbolt, bolt on, replace seal (7).
Coolant hoses (9), (10) and (11) .....	take off, fit on.

M8 x 30 bolts (5) ..... unscrew, screw on (21 Nm).

**Note**

Place rear bolts (5) into the threaded holes with a pencil type magnet because of accessibility. remove, install.

Coolant pump (4) with leak water pipe (4a) .....

**Note**

The coolant pump is fixed in position with two dowel sleeves (8). Insert leak water pipe (4a) into coolant pump and combination support.

Seal (5) .....

replace.

Cooling system .....

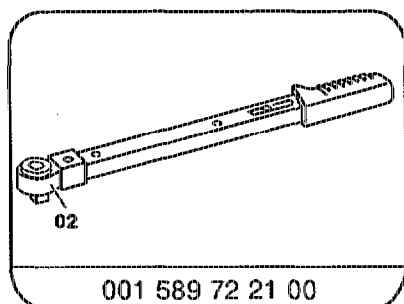
check for leaks (20-0170).

**Tightening torque in Nm**

Bolts of coolant pump to crankcase

21

**Special tool**



**Commercially available tool**

Hexagon socket wrench with 6 mm joint, 3/8"

7 mm wrench socket hexagon on flexible shaft for hose clip with worm drive

e. g. Hazet  
42853 Remscheid  
Order no. 426-7