

1999 W210

21 May 2021

252,011 kilometers

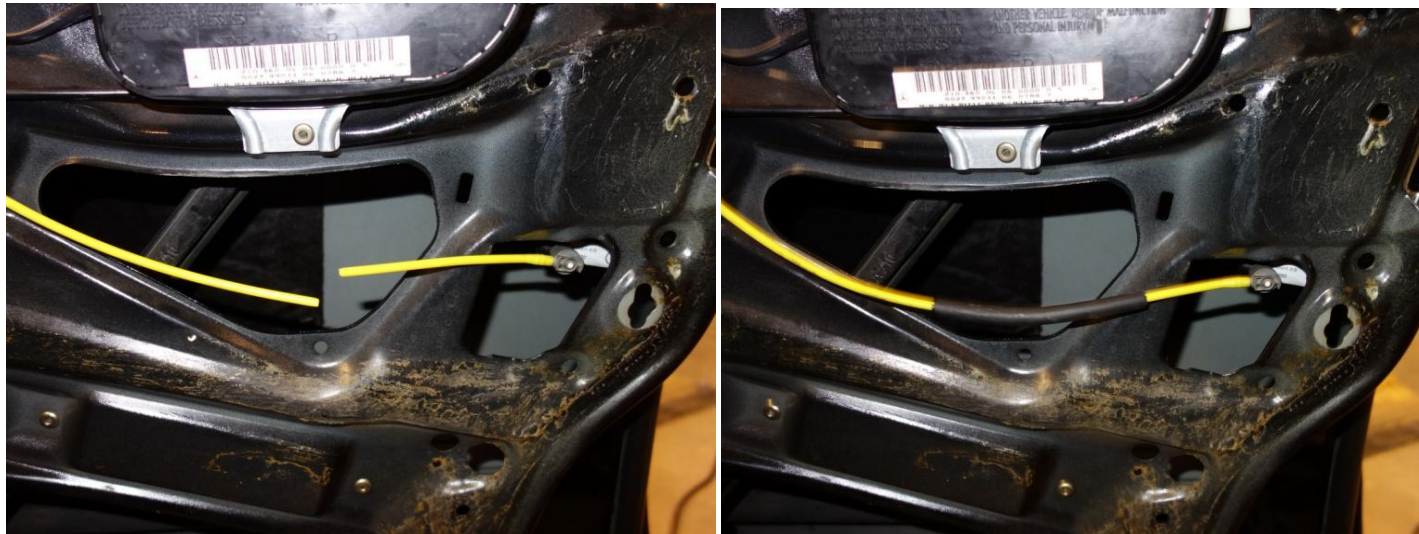
-Passenger side front door lock assembly failed so door would not close. Replaced with new 202-720-44-35. \$237 w/tax.



•The following slides are suggested to use with:

https://www.pelicanparts.com/techarticles/Mercedes-Benz/41-BODY-Door_Lock_Actuator_Replacement/41-BODY-Door_Lock_Actuator_Replacement.htm

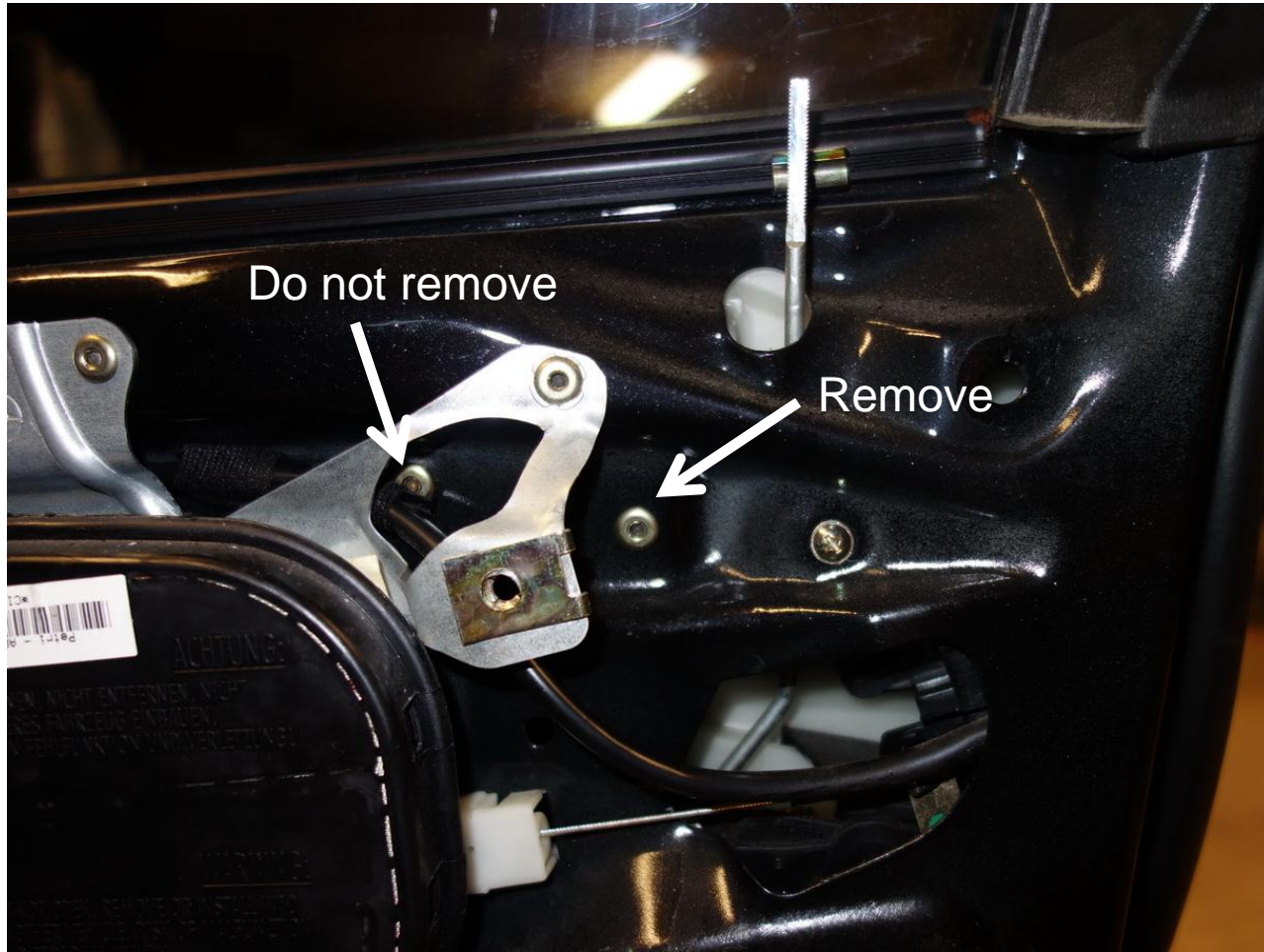
- Window in closed position.
- Disconnect battery negative cable at rear seat.
- No need to remove or disconnect air bag on this 1999 W210.
- Note: Rather than risk breaking the vacuum line connector, I find it easier to cut the line, remove the connector after removal of the lock assembly, then use vacuum tubing to reconnect the yellow hard line.



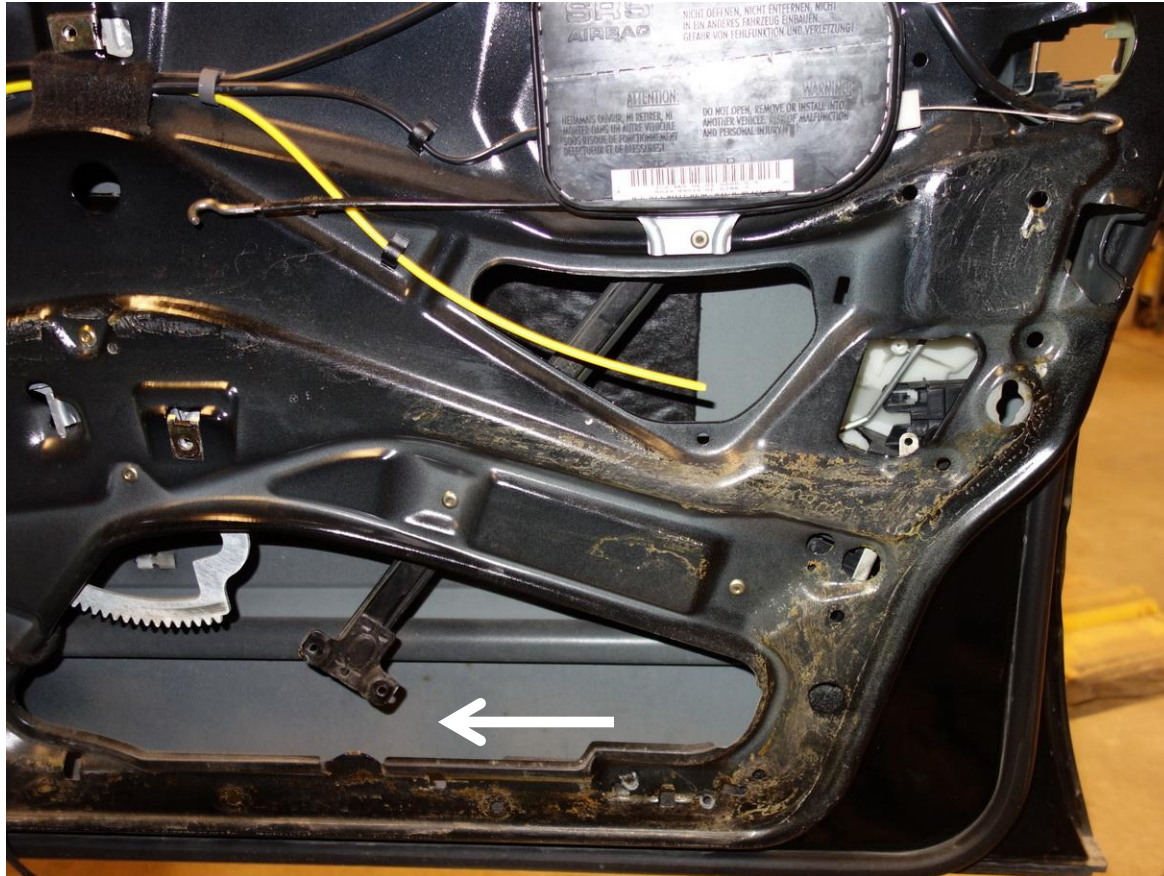
- Drill out two bottom rivets of window guide.



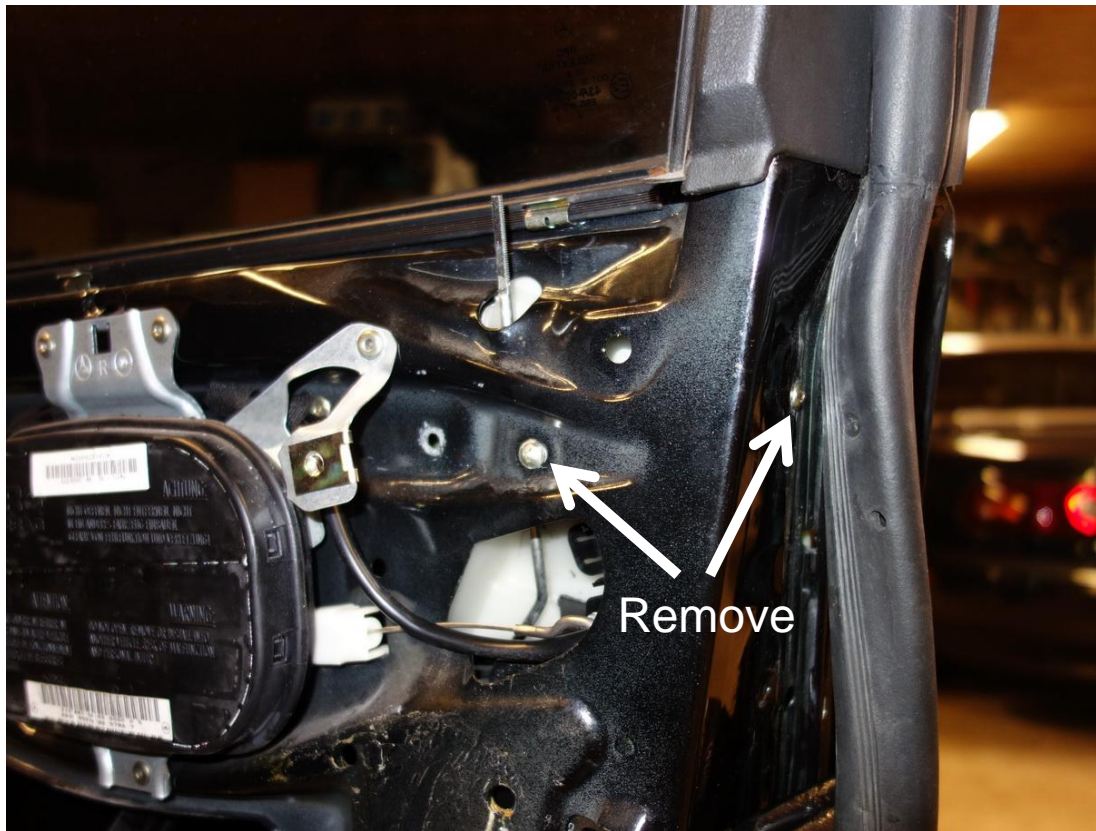
- At top of window guide, drill out rivet closest to the lock assembly.



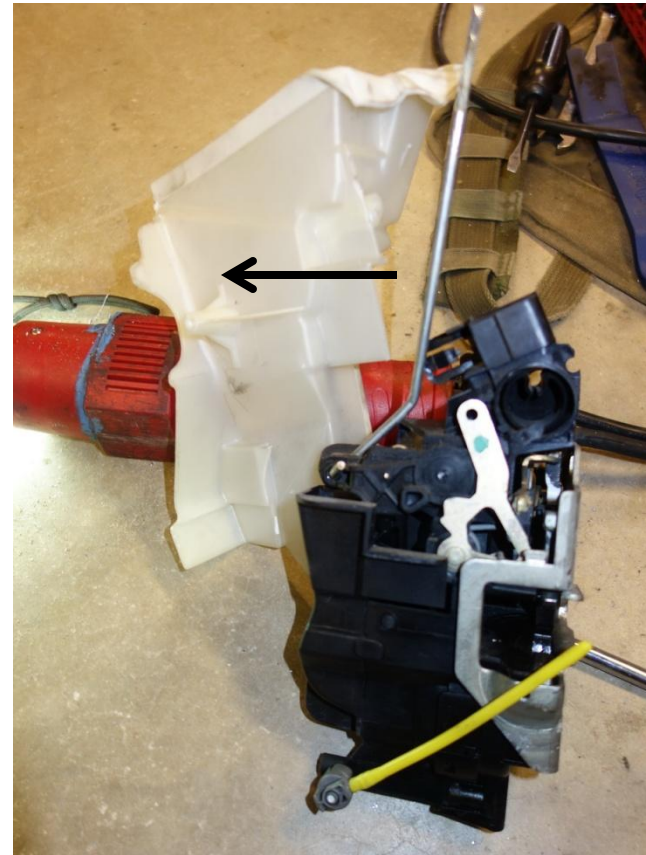
- Rotate window guide out of the way.



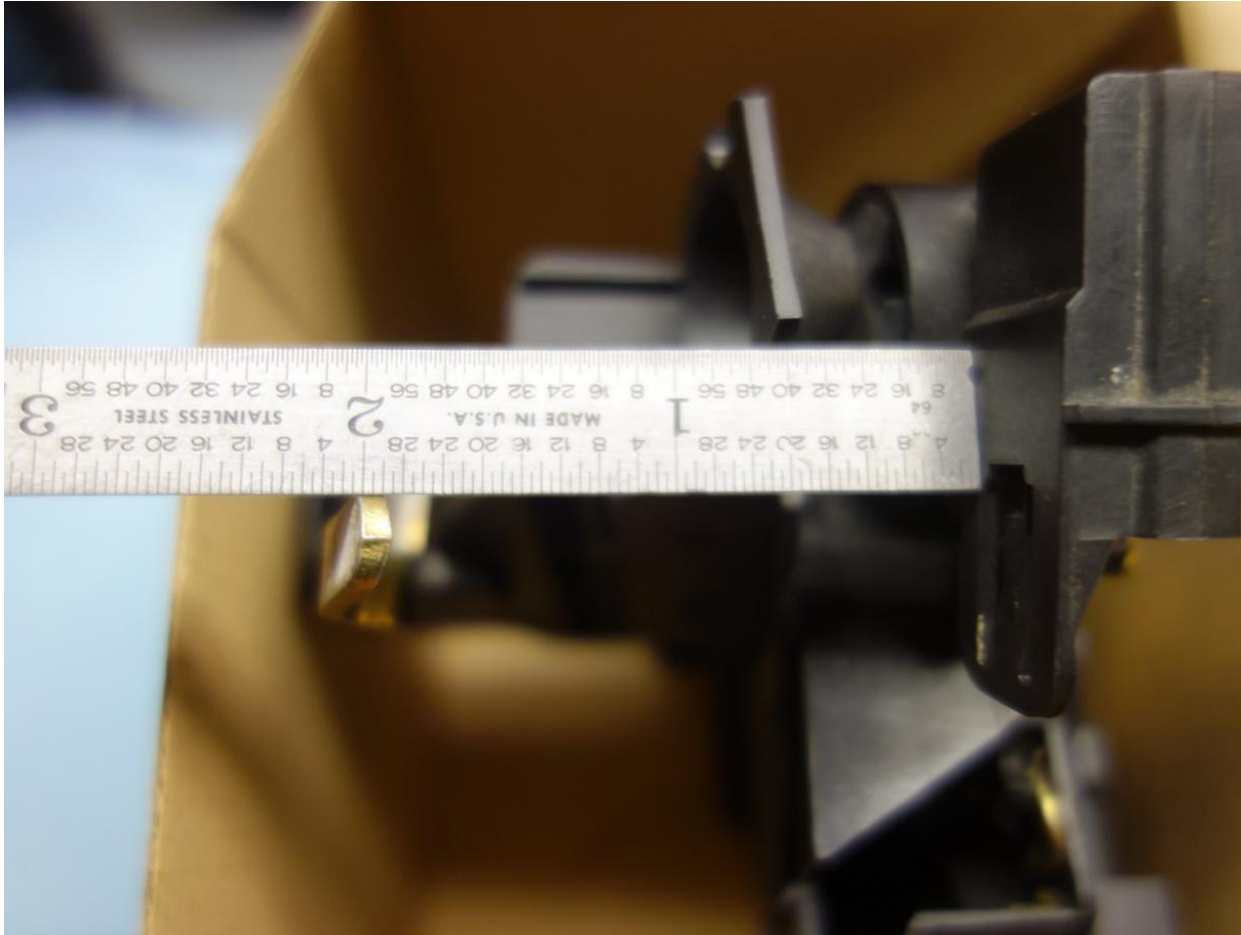
- Remove exterior IR sensor using 4mm allen-head wrench through hole hidden under the door seal (see Pelican Parts tech info).
- Remove exterior door handle (see Pelican Parts tech info).
- Remove two each T-30 torx screws above/below latch.
- Remove two each screws that hold the rain shield in place.



- Carefully work the lock assembly and rain shield out of the door.
- Use a flat-tip screwdriver to release the rain shield locking tab inside the lock assembly behind the manual lock rod.
- Slide the rain shield sideways away from the latch mechanism.
- Now is a good time to carefully remove the vacuum fitting.



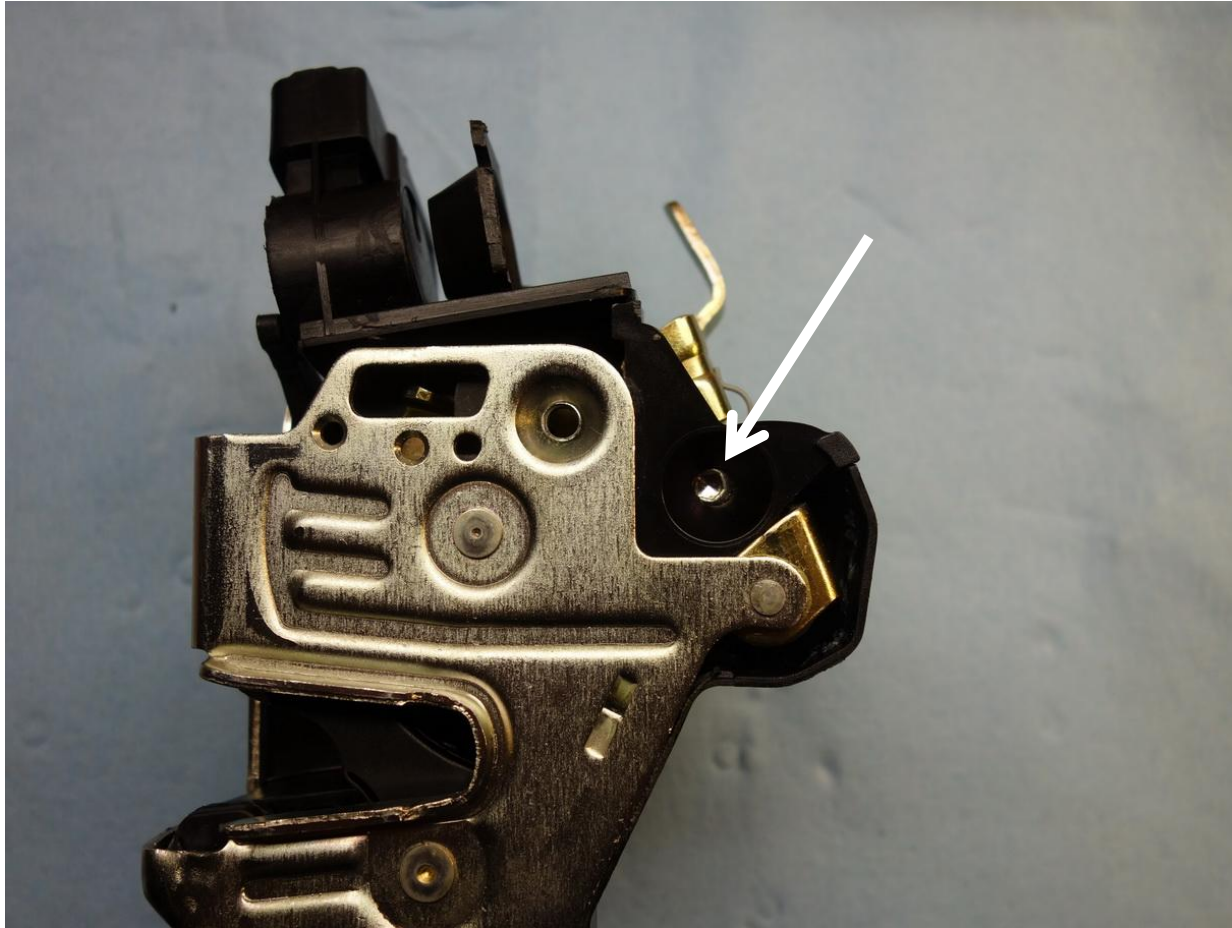
- On the old lock assembly, measure the distance of the release lever from the plastic housing. In this case, $\sim 1 \frac{7}{8}$ ths of an inch.



- On the new lock assembly, measure the distance of the release lever from the plastic housing. In this case, $\sim 2 \frac{1}{8}$ of an inch.
- This means the exterior door handle will not sit flush with the door but rather will stick out one-quarter inch. ($2 \frac{1}{8}$ " minus $1 \frac{7}{8}$ ")
- This can be adjusted.



- Loosen the adjustment screw, adjust the release lever to match the original part, then tighten.
- NOTE! Adjustment screw has left-hand threads! Turn clockwise to loosen, counter-clockwise to tighten!



- Re-attach rain shield to lock assembly.
- Carefully work the assembly into the door.
- Insert the T-30 torx screws and the two rain shield screws.
- Reinstall the door handle. Without closing the door, manually close the latch mechanism and confirm the door handle will release the latch mechanism. If successful, reinstall the IR sensor.
- Install rivets in the window guide.
- Connect vacuum connector to the lock assembly.
- Remainder is reverse of removal.