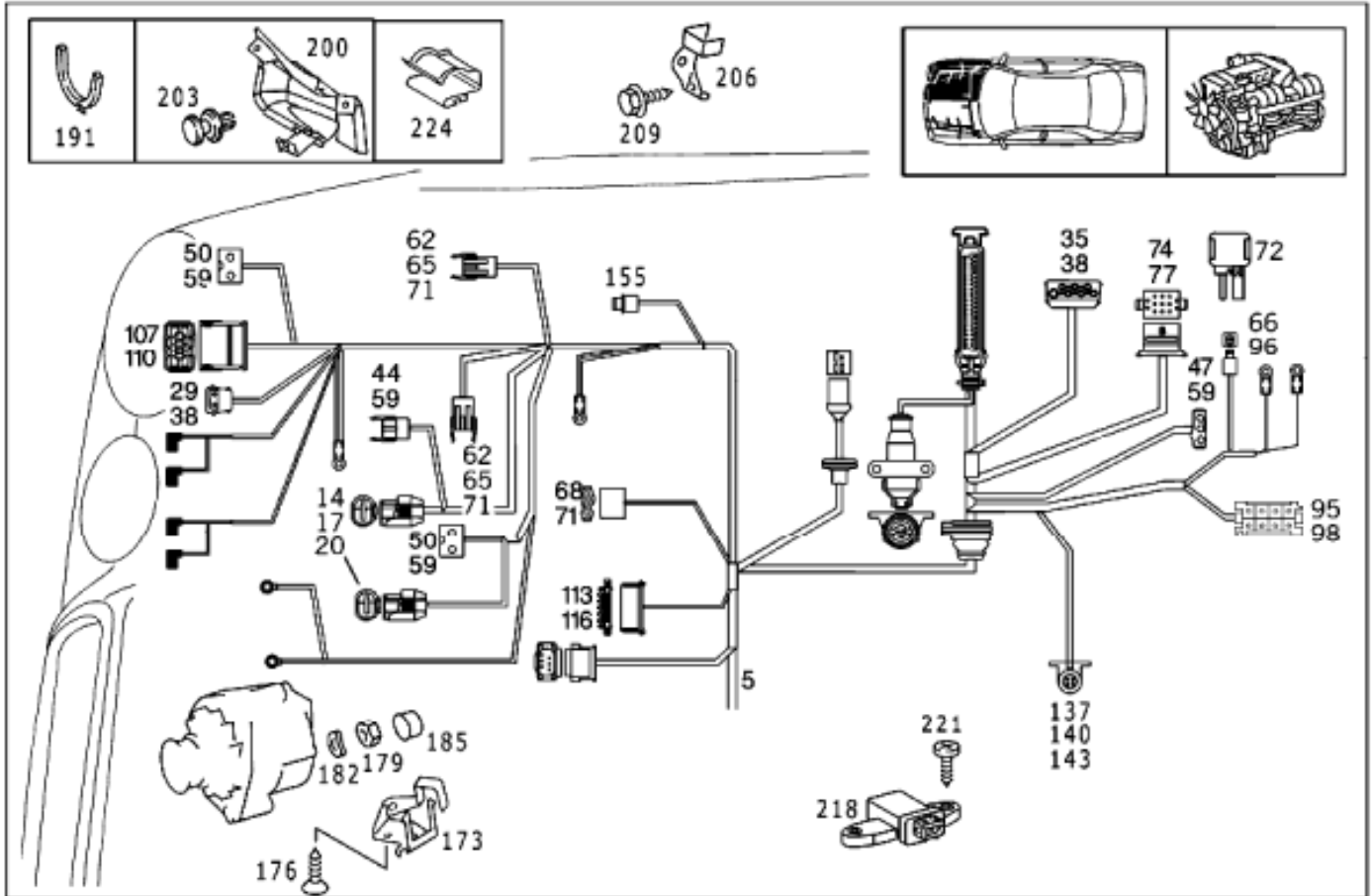
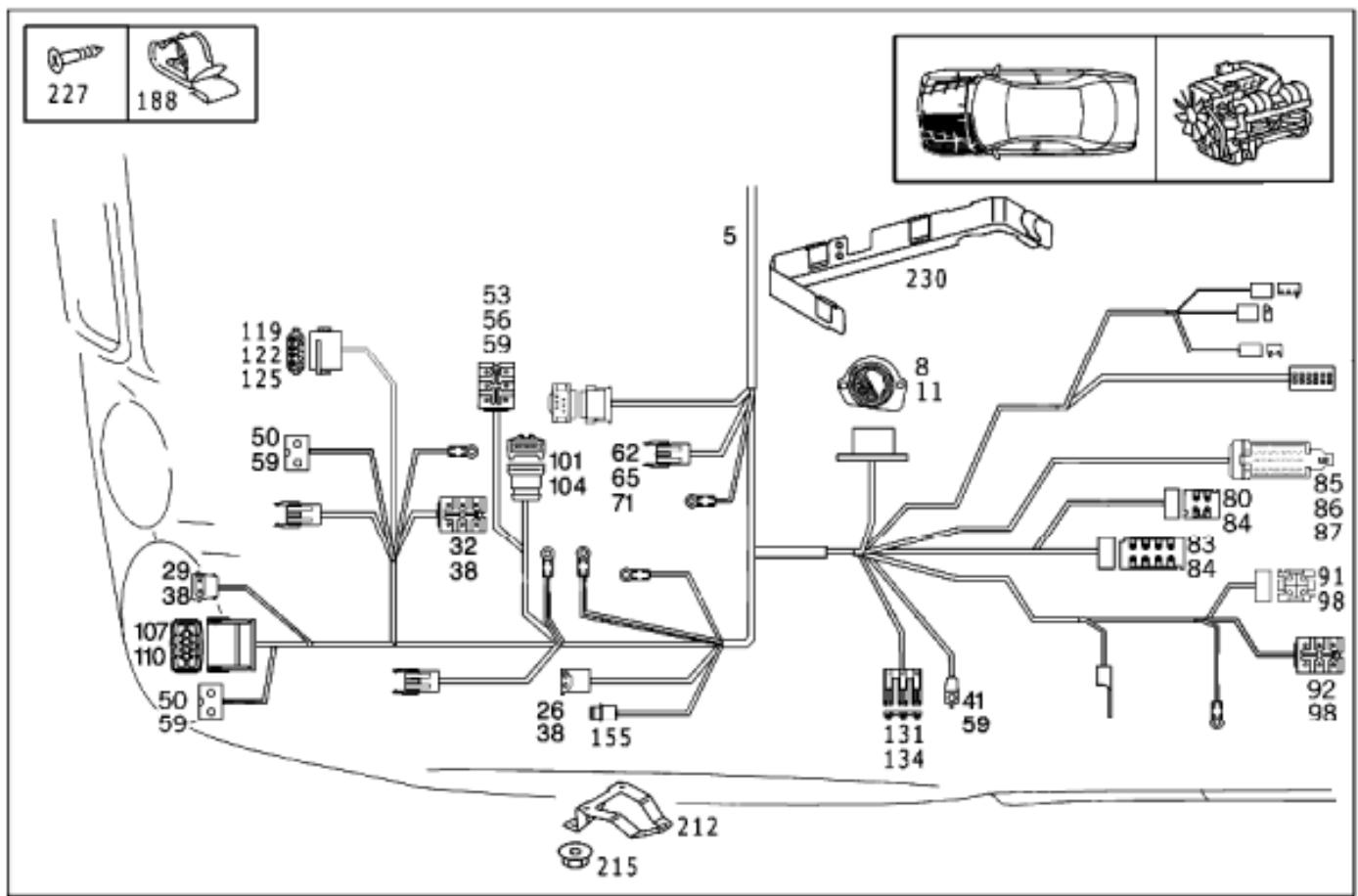


Îããëü / Ñëñðãîü / Óçãë: 54 ELECTRICAL EQUIPMENT AND INSTRUMENTS

Îããëü=210065 Êàðàëíã=45P Ñëñðãîü: 54 ELECTRICAL EQUIPMENT AND INSTRUMENTS

Ëëëðñððãðëý: 121 Óçãë: ENGINE CABLE HARNESS, BODY MOUNTED





1	Έτα	Çàíaà	Ê-âí	Âàð-ò	Íàçâáεά	Èíòíðíàòεý	Ïðεíá-áíεý
005	2105403506		001	L	CABLE HARNESS	ENGINE CABLE HARNESS, BODY MOUNTED	<u>*881</u>
005	2105405806		001	L	CABLE HARNESS	ENGINE CABLE HARNESS, BODY MOUNTED	<u>*890</u>
005	2105403606		001	R	CABLE HARNESS	ENGINE CABLE HARNESS, BODY MOUNTED	<u>*881</u>
005	2105405906		001	R	CABLE HARNESS	ENGINE CABLE HARNESS, BODY MOUNTED	<u>*890</u>
008	1405450026		001		PLUG SOCKET	DIAGNOSIS BOX	
011	0035454826		NB		ROUND PIN BUSHING		1 MM
014	2105402081		001		PIN BUSHING HOUSING	OUTBOARD TEMPERATURE INDICATOR	
017	0085456326		NB		CONTACT BUSHING		0.2-0.75 MM2
020	0005456880		NB		GASKET		TO 008 545 63 26
026	0145450128		001		PIN BUSHING HOUSING	WINDSHIELD WASHER NOZZLE HEATING	

029	0185453828		002		PIN BUSHING HOUSING	FOGLAMP	
038	0025459926		NB		ROUND PIN BUSHING		2,5 MM
041	0285457028		001		PIN BUSHING HOUSING	RELAY	
044	0115457128		001		PIN BUSHING HOUSING	ELECTRIC CHANGE-OVER VALVE	
050	0115450128		001		PIN BUSHING HOUSING	BLINKER LIGHT	
050	0115450128		001		PIN BUSHING HOUSING	WINDSHIELD WASHER PUMP;2-POLE	*871
050	0115450128		001		PIN BUSHING HOUSING	RECIRCULATING PUMP	
059	0035452626		NB		ROUND PIN BUSHING		4 MM
062	0085450828		001		PIN BUSHING HOUSING	BRAKE FLUID CONTROL, BRAKE LINING WEAR INDICATION;BIPOLAR	
062	0085450828		001		PIN BUSHING HOUSING	WINDSHIELD WASHER WATER LEVEL	
062	0085450828		001		PIN BUSHING HOUSING	COOLING WATER LEVEL INDICATOR	
065	0085451128		NB		COVER		TO 008 545 08 28
068	0235451628		001		PIN BUSHING HOUSING	HEATING WATER VALVE	
071	0015454426		NB		ROUND PIN BUSHING		4 MM
083	0175451228		001		PLUG HOUSING	ENGINE CABLE HARNESS PLUG-CONNECTION	
084	0165451428		NB		PLUG PIN		2.5 MM
085	2105455628		001		PIN BUSHING HOUSING	LIGHT SWITCH MODULE	
086	0005456683		001		CAP		TO 210 545 56 28
087	A0065458926	0115458126	-		CONTACT SPRING		
087	0115458126		NB		CONTACT SPRING		0.5-1.0 MM2
087	0045455326		NB		FLAT PIN BUSHING		1.5-2.5 MM2
088	2105403681		001		PIN BUSHING HOUSING	(PEDAL VALUE SENSOR)	
089	0135454626		NB		CONTACT BUSHING		
090	0005456880		NB		GASKET		TO A 013 545 46 26
091	0185451528		001		PIN BUSHING HOUSING		
092	0175451928		001		PIN BUSHING HOUSING	TEMPOMAT SWITCH	*871
092	0175451928		001		PIN BUSHING HOUSING	ENGINE CABLE HARNESS PLUG-CONNECTION	
095	0175452328		001		PIN BUSHING HOUSING	ENGINE CABLE HARNESS PLUG-CONNECTION	
098	0035450626		NB		ROUND PIN BUSHING		2.5 MM
107	2105456728		002		PLUG	LIGHTING UNIT	

110	0055456826		NB		CONTACT SPRING		0.5-1.0 MM2
110	A0085456726	0115457626	-		CONTACT SPRING		
110	0115457626		NB		CONTACT SPRING		1.5-2.5 MM2
113	0295451328		001		PIN BUSHING HOUSING	WIPER MOTOR	*871
116	A0045452126	0045455226	-		CONTACT SPRING		
116	0045455226		NB		CONTACT SPRING		1.0-2.5 MM2 *871
116	A0035456826	0085455326	-		CONTACT SPRING		
116	0085455326		NB		CONTACT SPRING		0.5-1.0 MM2
119	0345459428		001		PLUG HOUSING	CONTROL FOR ELECTRIC SUCTION-TYPE FAN	
122	0095452726		NB		ROUND PIN BUSHING		4.0-6.0 MM2
122	0085456826		NB		CONTACT SPRING		0.5-1.0 MM2
125	0015450680		NB		GASKET		4.0 MM2
125	0015450580		NB		GASKET		6.0 MM2
125	0005452829		NB		GASKET		0.5-1.0 MM2
125	0005456080		NB		GASKET		
131	0005454730		001		SHELL	FUSE BOX	
134	A0065453626	0085458326	-		CONTACT SPRING		
134	0085458226		001		CONTACT SPRING		0.35-1.0 MM2
155	0005400966		002		SOCKET	ADDITIONAL BLINKER LAMP	
179	N000934008010	304032008006	-		NUT		
179	304032008006		001		NUT	CABLE TO ALTERNATOR	
179	000934005008		001		NUT	CABLE TO ALTERNATOR	
182	N000137008204	000137008212	-		SPRING WASHER		
182	000137008212		001		SPRING WASHER	CABLE TO ALTERNATOR	
182	000137005203		001		SPRING WASHER	CABLE TO ALTERNATOR	
185	A0005467235	913018013201	-		BOOT		
185	913018013201		001		PROTECTION CAP	CABLE TO ALTERNATOR, TERMINAL 30	
191	2105460037		001	L	GROMMET	AT PARTITION PANEL	
224	0009881878		001		CLIP	ON PLUG CONNECTION, WIPER MOTOR	
227	0019904532		002		SCREW	DIAGNOSIS BOX TO BRACKET	
230	2105401073		001		BRACKET	DIAGNOSIS PROBE	*220
230	0005469743		001		BRACKET	DIAGNOSIS PROBE	*221

*220 UP TO IDENT NO.: A 779253

*221 FROM IDENT NO.: A 779254

*871 UP TO DATE:

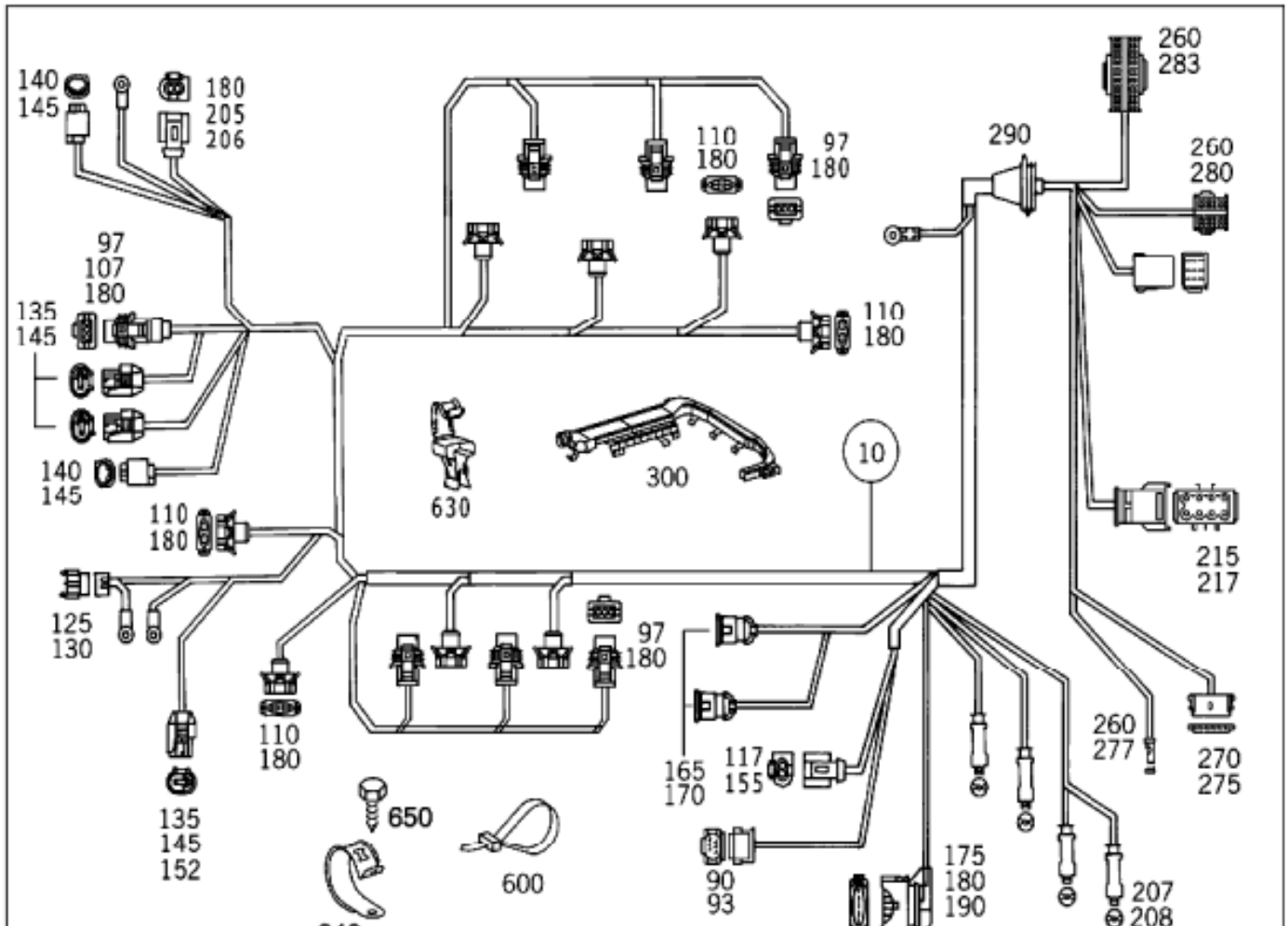
A 394035

EXCEPT CODE 808

ALSO INSTALLED IN VEHICLE FROM A 394036 WITH CODE 807

*881 UP TO DATE:

A 698507



¹	Êĭă	Çăĭăĭă	Ê-ăĭ	Ăăđ-đ	Īăçăăĭĕă	Ëĭŕĭđĭăđĕÿ	Īđĕĭă-ăĭĕÿ
610	0015469941		NB		SOLDERING END CUPS	GREEN	0.7-2.4 MM2
610	0025460041		NB		SOLDERING END CUPS	RED	2.0-4.0 MM2
610	0025460141		NB		SOLDERING END CUPS	BLUE	3.5-8.0 MM2
610	0025461141		NB		SOLDERING END CUPS	YELLOW	7.5-12.0 MM2
620	0025461341		NB		BUTT CONNECTOR		0.5 MM2
620	0025461441		NB		BUTT CONNECTOR		0.8 MM2
620	0025461541		NB		BUTT CONNECTOR		1.3 MM2
620	0025461641		NB		BUTT CONNECTOR		2.0 MM2