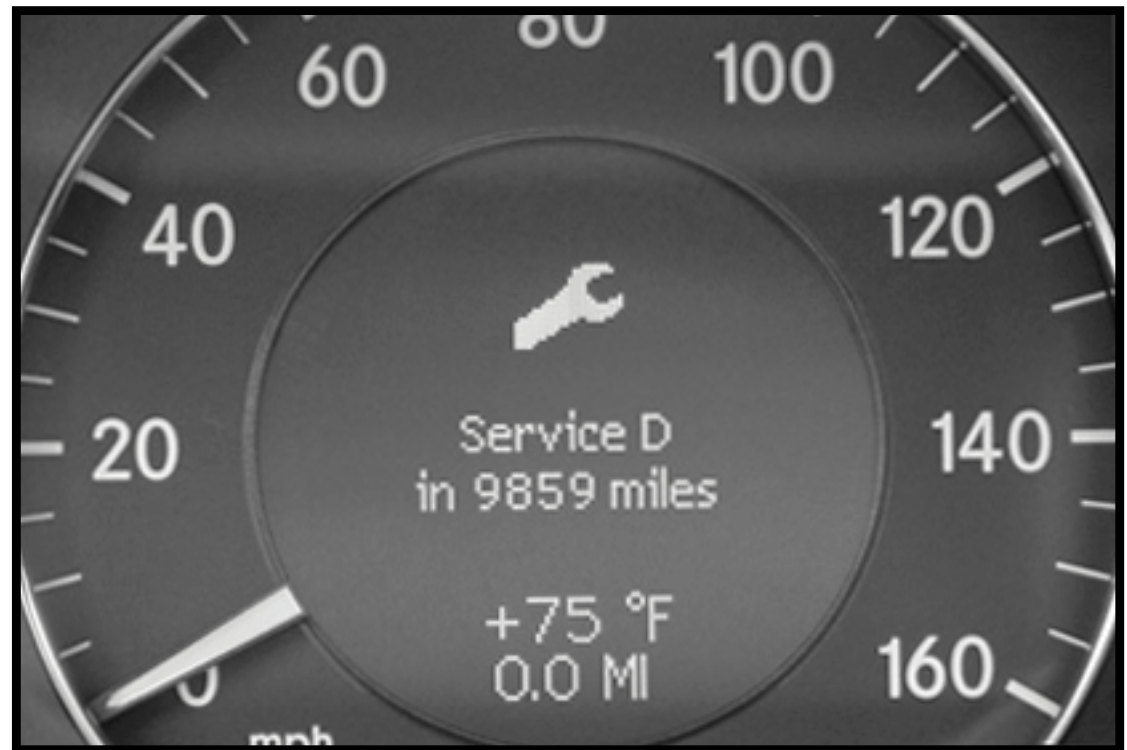


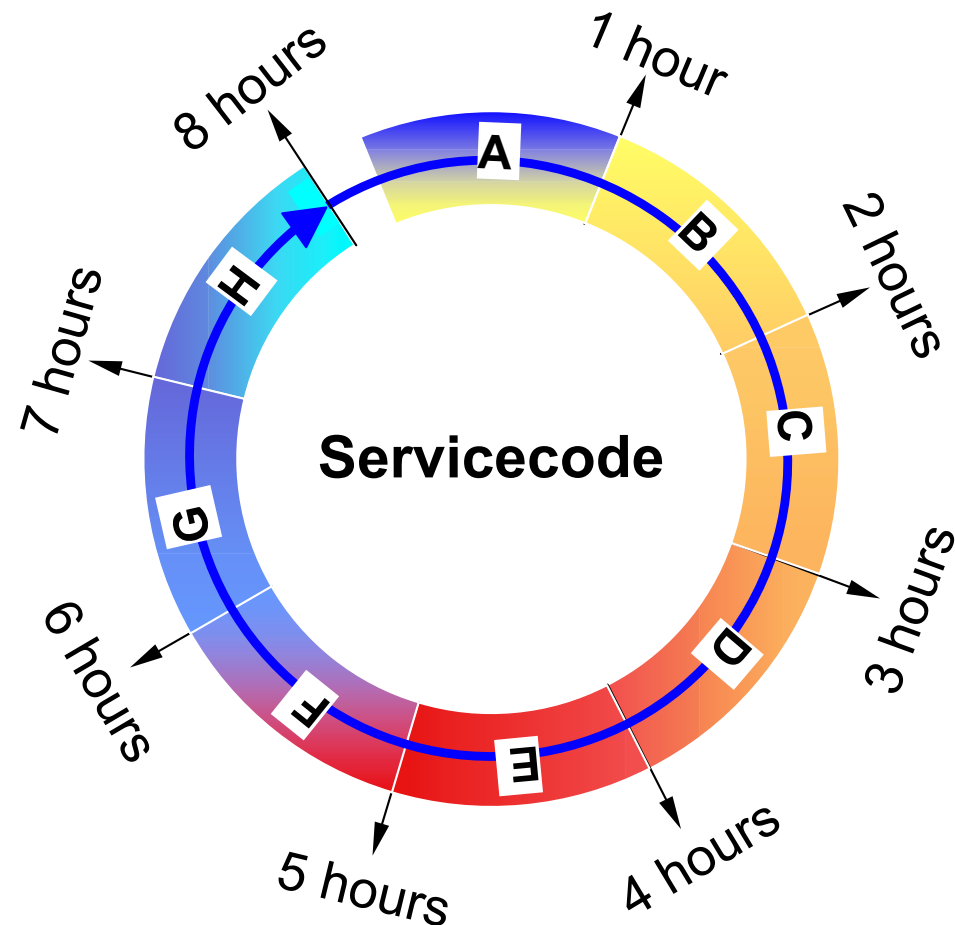
FSS PLUS Displays (Customer)

- Customer display
- Codes A-H are displayed
- Accessed using the multi-function steering wheel (as before)



Interpreting Service Codes

- Determined by the maintenance calculation
- Each service code has a corresponding estimated time
- “+” next to a service code indicates need for brake service (inspection)
- i.e. D+



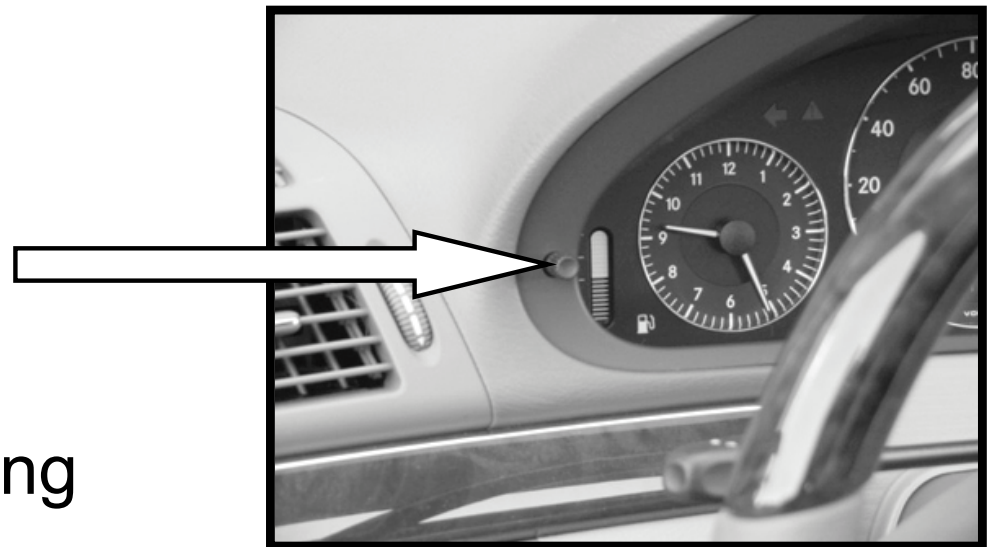
Note: Service codes are used for estimating time ONLY. They do NOT indicate the same service items for each code. Service items are determined by time and driving conditions.

Accessing Workshop Information Multi-Function Displays

1. Begin at the customer display screen




2. Press and hold the reset button for 5 seconds



3. Use the multi-function steering wheel for scrolling

Service Menu Screen

- Initial screen that appears when accessing FSS PLUS
- Scroll up and down using the **+** and **-** buttons
- Select menu using  button



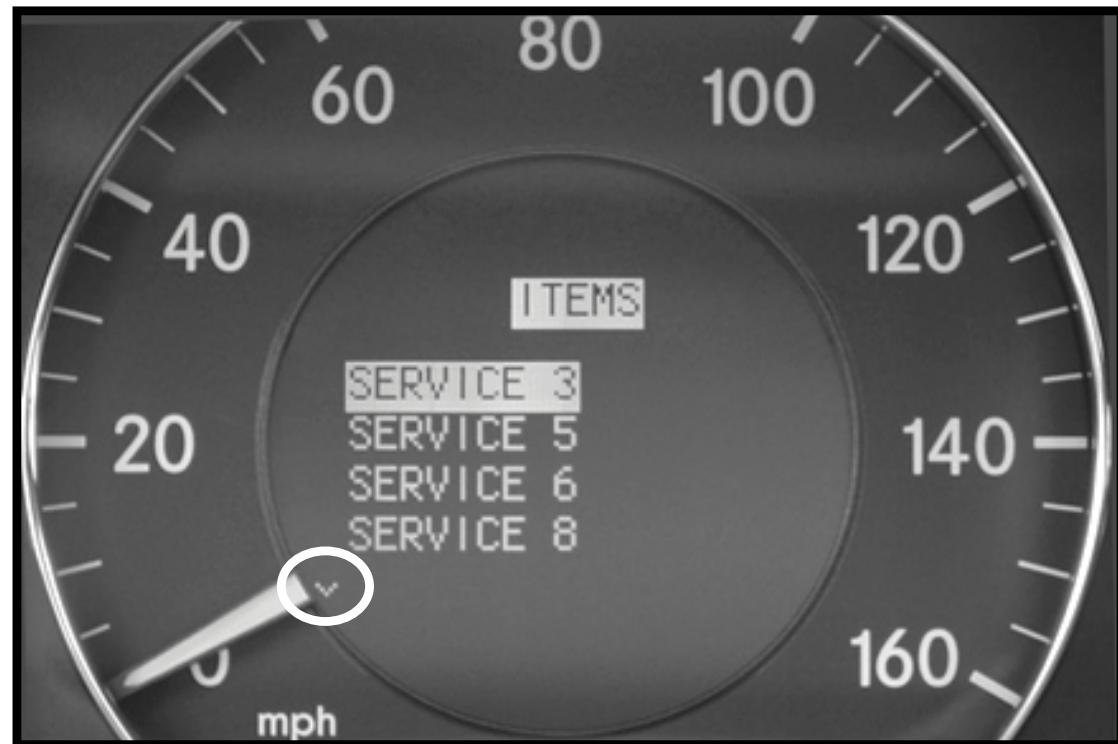
Service Data Screen

- “58M21” used in the future for generating a service sheet via SDS/WIS
- “Weighting” time it will take to perform the service items
 - displayed in minutes
- Miles/days remaining
 - same as before




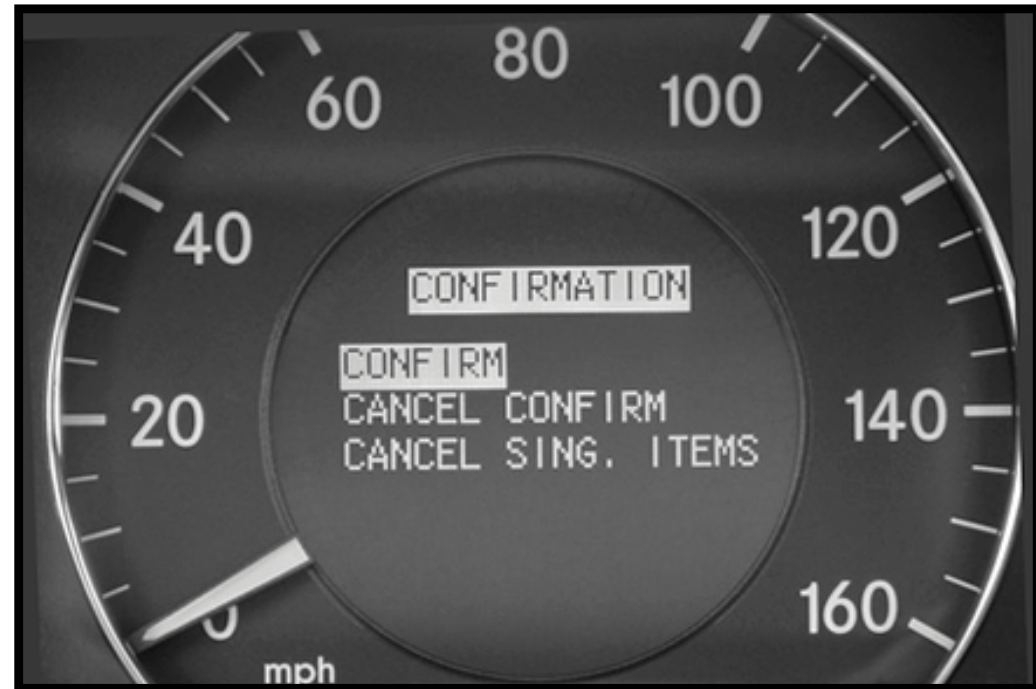
Items Screen

- Required service items
- Refer to service sheet for detailed break-down
- “^” or “v” indicator in the display indicates additional items
 - use **+** / **-** buttons for scrolling



Confirmation Screen

- Confirms service performed in central gateway (N93)
- All service items listed can be confirmed and cancelled
- Individual service items can be cancelled
- Scroll up and down using the **+** and **-** buttons
- Select option using  button



Key must be in position 2 in order to confirm service

Special Work Screen

- Allows you to manually set a date for:
 - exhaust gas analysis
 - general inspection
- Scroll up and down using the **+** and **-** buttons
- Change month and year using the **↑** and **↓** buttons

