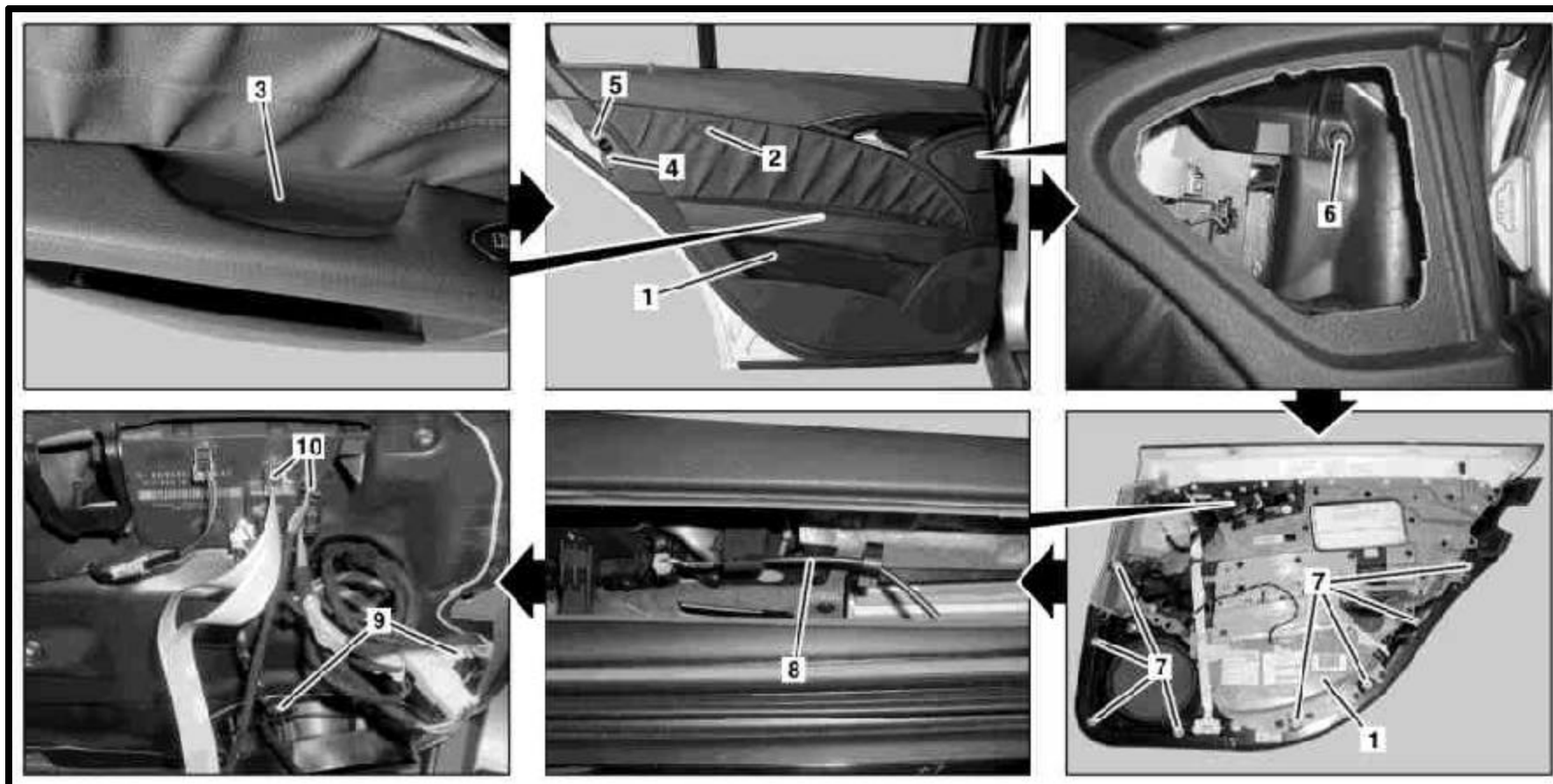


MODEL 211.004 /006 /016 /026 /028 /042 /043 /061 /065 /070 /076 /080 /082 /083 /206 /216 /226 /242 /243 /261 /265 /270 /276 /280 /282 /283



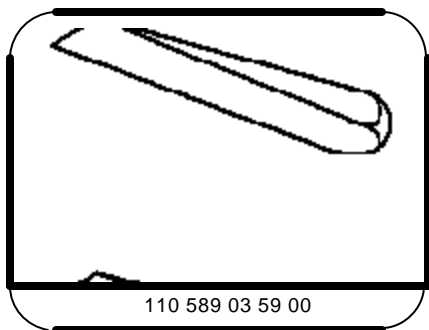
P72.12-2193-09

1 Door lining
2 Cover
3 Cover
4 Bolt

5 Door lock cover
6 Bolt
7 Clips

8 Control cable
9 Electrical connectors
10 Electrical connectors

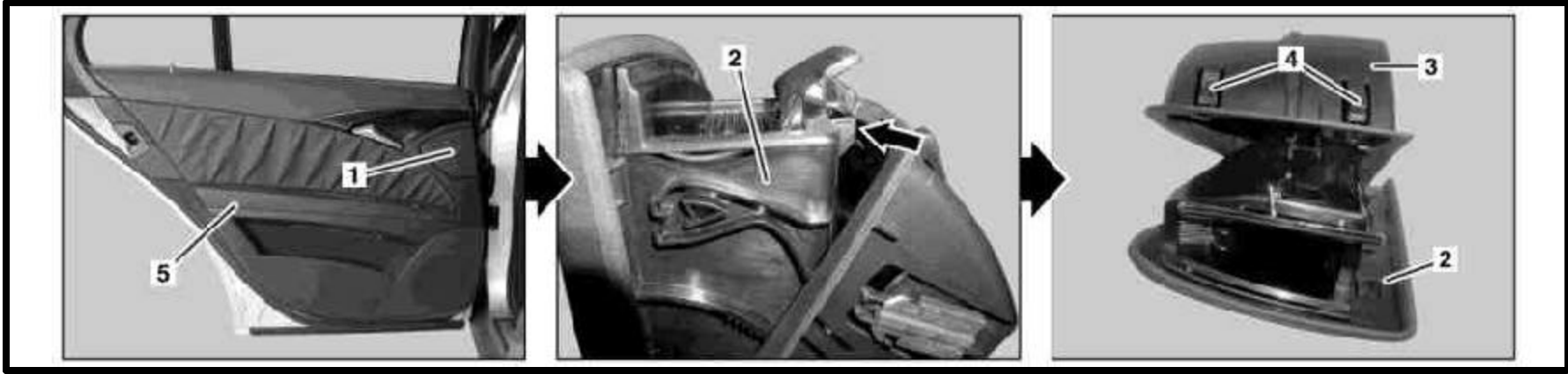
Remove/Install		
1	Disconnect ground line of battery	Model 211.0 Model 211.2
2	Remove ashtray in rear door	AR54.10-P-0003T AR54.10-P-0003TA
3	Unclip cover (2) from door lining (1) and unscrew bolt underneath	AR72.12-P-1041T
4	Unclip cover (3) with assembly wedge and unscrew bolts underneath	i Two bolts are located below the cover (3). S
5	Unscrew bolt (4) and remove door lock cover (5)	*110589035900
6	Unscrew bolt (6)	
7	With assembly wedge unclip door lining (1) at clips (7) from rear door	S i Installation: Replace damaged clips (7). *110589035900
8	Unhook Bowden cable (8)	
9	Separate electrical connectors (9, 10) and remove door lining (1)	
10	Install in the reverse order	



110 589 03 59 00

Assembly wedge

MODEL 211.004 /006 /016 /026 /028 /042 /043 /061 /065 /070 /076 /080 /082 /083 /206 /216 /226 /242 /243 /261 /265 /270 /276 /280 /282 /283



1 Ashtray
2 Flap

3 Ashtray housing
4 Catch hook

5 Door lining

P68.20-2563-07

☒ ☒	Remove/Install		
1	Open ashtray (1) and take out ashtray insert		
2	Unlock flap (2) on catch hook (arrow)		
3	Unclip ashtray housing (3) on catch hook (4) from door lining (5) and remove	<p>i When unclipping the ashtray housing (3) simultaneously pry off ashtray housing (3) carefully from the door lining (5) with an assembly wedge.</p> <p>i Installation: Ashtray housing (3) must latch noticeably in the door lining (5).</p>	
4	Install in the reverse order		