



- Mercedes-Benz
- TechCenter
- Contact
- Start
- Overview
- Experience
- Transparent
- In depth
- Communicating

Keywords
Introduction
At a glance
Safety
Occupant safety
Driving safety systems
Anti-theft systems
Controls
Operation
Practical advice
Technical data

Anti-theft systems

Quick Access

- Immobiliser
- ATA* (anti-theft alarm system)
- Tow-away protection*
- Interior motion sensor*

Immobiliser

The immobiliser prevents your vehicle from being started without the correct k

Activating the immobiliser

- ▶ **With the key:** remove the key from the ignition lock.
- ▶ **With KEYLESS GO*:** press the KEYLESS GO button on the selector leve
The engine switches off.

Deactivating the immobiliser

- ▶ **With the key:** turn the key to position **2** in the ignition lock.
- ▶ **With KEYLESS GO*:** press the KEYLESS GO button on the selector leve



The immobiliser is always deactivated when you start the engine.

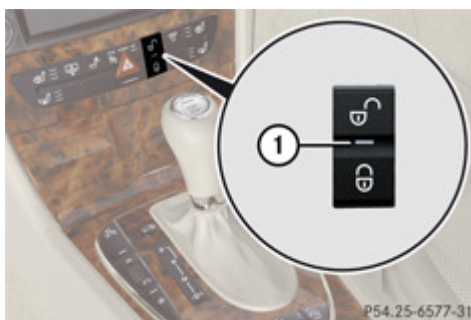
ATA* (anti-theft alarm system)

A visual and audible alarm is triggered if the alarm system is primed and you

- a door

- a door using the emergency key element
- the boot lid/tailgate
- the bonnet



The alarm is not switched off even if you close an open door again.



① Indicator lamp

- ▶ **To prime:** lock the vehicle using the key. On vehicles with KEYLESS GO* lid/tailgate can also be used.
Indicator lamp ① flashes. The alarm system is primed after approximately
- ▶ **To deactivate:** unlock the vehicle using the key. On vehicles with KEYLESS opening the door/boot lid/tailgate.

Switching off the alarm

- ▶ **With the key:** insert the key into the ignition lock.
The alarm is switched off.
- or
- ▶ Press the  or  button on the key.
The alarm is switched off.
- ▶ **With KEYLESS GO*:** pull the door handle. The key must be outside the vehicle.
The alarm is switched off.
- or
- ▶ Press the KEYLESS GO button on the selector lever. The key must be inside the vehicle.
The alarm is switched off.

Tow-away protection*

An audible and visual alarm is triggered if your vehicle's angle of inclination is too steep. This happens if the vehicle is jacked up on one side, for example.

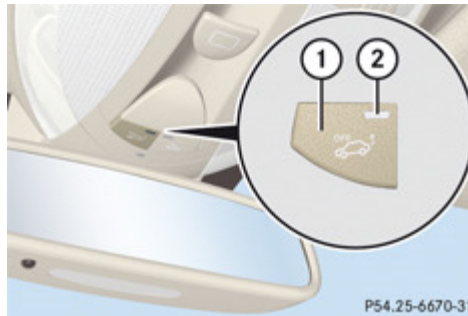
Priming tow-away protection

- ▶ Lock the vehicle using the key. On vehicles with KEYLESS GO*, the lock can also be used.
Tow-away protection is primed after approximately 30 seconds.

To deactivate tow-away protection

When you unlock your vehicle using the key or KEYLESS GO*, tow-away protection is deactivated. Deactivate tow-away protection manually to prevent a false alarm if your vehicle is tilted.

- is being transported
- is being loaded, e.g. onto a ferry or car transporter
- is being parked on a movable surface, e.g. split-level garages



- ① To deactivate tow-away protection
- ② Indicator lamp

- ▶ Remove the key from the ignition lock.
- ▶ Press button ①.
Indicator lamp ② lights up briefly.
- ▶ Lock the vehicle using the key. On vehicles with KEYLESS GO*, the lockir lid/tailgate can also be used.
Tow-away protection remains deactivated until the vehicle is unlocked and

Interior motion sensor*

If the interior motion sensor is primed, a visual and audible alarm is triggered interior while the vehicle is locked. This occurs, for example, if someone breal reaches into the vehicle's interior.

Priming the interior motion sensor

- ▶ Make sure that:
 - the side windows are closed
 - the sliding/tilting sunroof* or panorama sliding sunroof* is clo
 - there are no objects, e.g. mascots, hanging on the rear-view trim.

This will prevent false alarms.

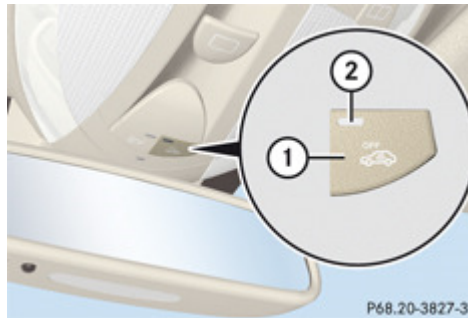
- ▶ Lock the vehicle using the key. On vehicles with KEYLESS GO*, the lockir lid/tailgate can also be used.

The interior motion sensor is primed after approximately 30 seconds.

To deactivate the interior motion sensor

To prevent a false alarm, deactivate the interior motion sensor if you lock you

- people or animals remain in the vehicle
- the windows remain open
- the sliding/tilting sunroof* or panorama sliding sunroof* remains



- ① To deactivate the interior motion sensor
- ② Indicator lamp

- ▶ Remove the key from the ignition lock.
- ▶ Press button ①.
Indicator lamp ② flashes briefly.
- ▶ Lock the vehicle using the key. On vehicles with KEYLESS GO*, the lockir can also be used.
The interior motion sensor remains deactivated until the vehicle is unlockec

Mercedes-Benz

- [Deutsch](#)
- [Sitemap](#)
- [© 2008. Daimler AG. All Rights Reserved \(Provider\)](#)
- [Cookies](#)
- [Privacy Statement](#)
- [Legal Notice](#)