

Procedure



Figure 1

(shown on Model 211)

1. Turn steering wheel all the way to right side.
2. Detach fender liner in indicated area and press to one side with assembly wedge (Figure 1).
 - Remove the nut and two rivets (arrows, Figure 1).
3. Check for presence of either version of drain nozzle (A, Figure 2).
 - If either drain nozzle is installed, remove nozzle.
 - If no drain nozzle is installed, proceed to next step.
4. Ensure that there are no obstructions in the water drain passage.
5. Reattach fender liner.
6. Turn steering wheel all the way to left side and perform steps 2-5 on left side of vehicle.

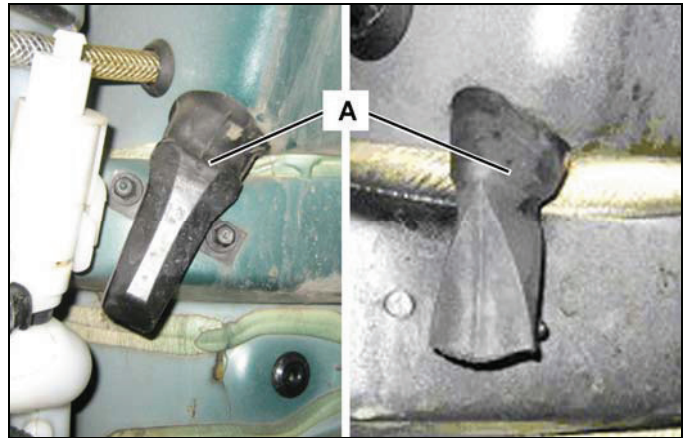


Figure 2

Different drain nozzle versions