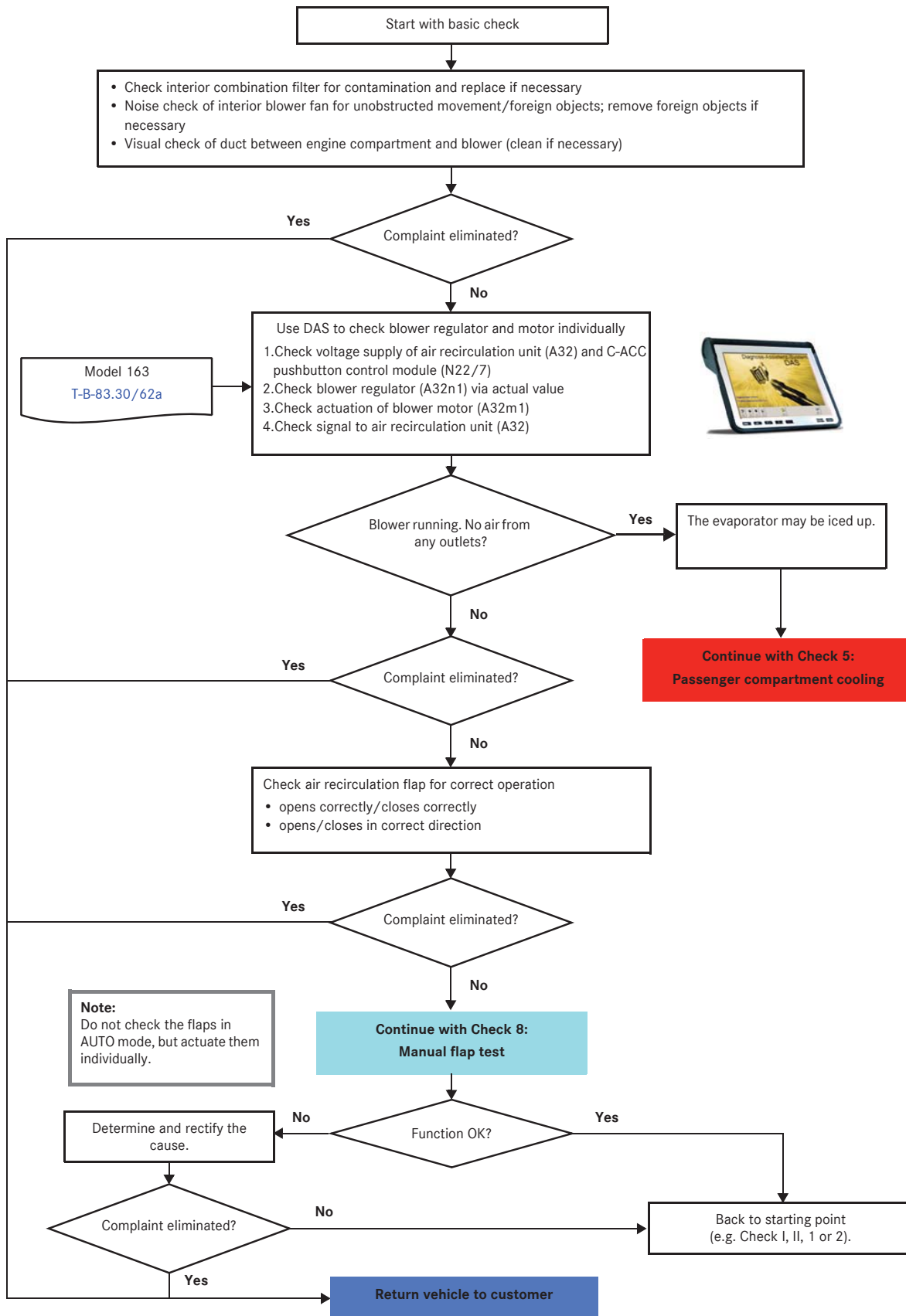


## Check 3 Blower/air ducting



## Actuators

**Activated charcoal filter flap adjustment motor (A32m2)/actuator motors (M2/5, M2/6, M2/7, M2/8, M2/9, M2/10, M2/11, M2/12, M2/13, M2/15, M2/16, M2/22, M16/30, M16/31)**

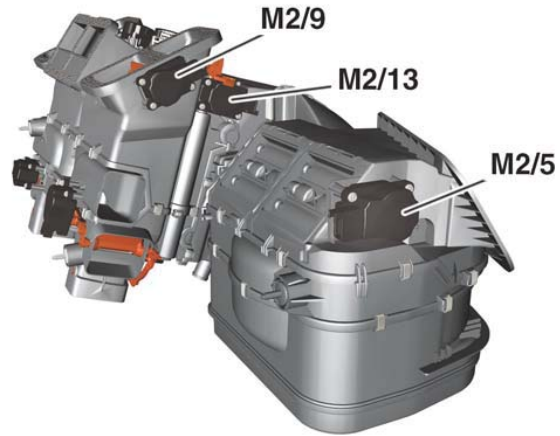
**Location:** The actuator motors for the fresh air/air recirculation flaps (M2/5) and for the blending air flaps, left (M2/6) and right (M2/7), are located on the front HVAC housing.

**With ACC (code 580):** The actuator motors for the left and right footwell flaps (M2/15), for the left and right defroster flaps (M2/16) and for the center air outlet flap (M2/22) are located on the front HVAC housing.

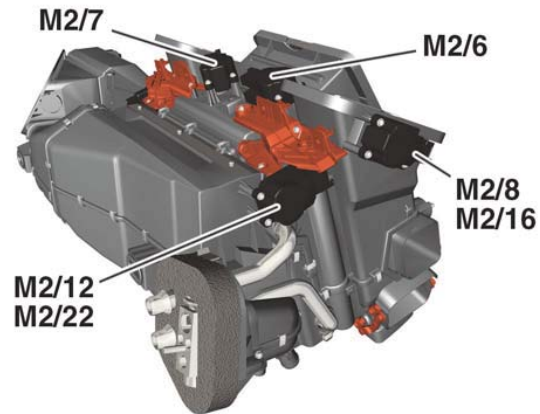
**With 4-zone ACC (code 581):** The activated charcoal filter flap adjustment motor (A32m2) and the actuator motors for the defroster flaps, left (M2/8) and right (M2/9), for the footwell flaps, left (M2/10) and right (M2/11), for the center air outlet air flaps, left (M2/12) and right (M2/13), and for the rear blending air flaps, left (M16/30) and right (M16/31), are located on the front HVAC housing.

**Task:** By appropriately adjusting the air direction and blending air flaps in the HVAC housing, the actuator motors regulate the temperature and air distribution in the vehicle interior. The fresh air/air recirculation flaps actuator motor (M2/5) regulates the supply of fresh or recirculated air.

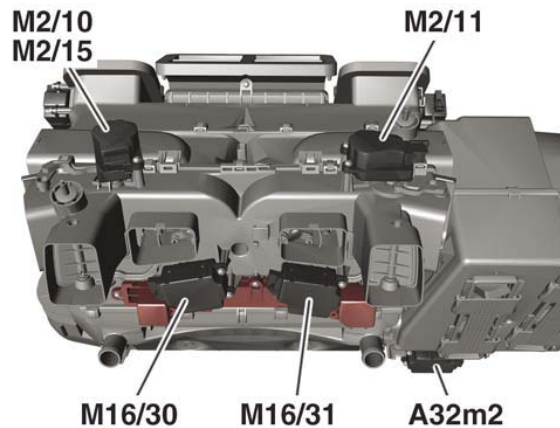
**Malfunction:** The air emerges from the corresponding air outlet either all the time or never, depending on the position of the actuator motor. If the fresh air/air recirculation flaps actuator motor (M2/5) has malfunctioned, adjustment of the fresh and air recirculation flaps is no longer possible. If one of the blending air flap actuator motors (M2/6, M2/7, M16/30, M16/31) fails, the temperature of the air emerging from the HVAC housing can no longer be regulated.



P83.40-3373-00



P83.40-3360-00



P83.40-3361-00