

Service Campaign Bulletin

FILE: SERVICE: GROUP 00 OF SERVICE INFORMATION BINDER
PARTS: GROUP I OF INFORMATION _ PARTS & ACCESSORIES BINDER

Campaign No. 2007100004, February 2009

Revision History

| Revision | Date | Purpose |
|----------|----------|--|
| D | 02/13/09 | Revision to warranty information for model 203 |
| C | 01/23/09 | Inclusion of model 203 (revisions to procedure, parts, warranty information) |
| B | 12/20/07 | Addition to Parts Table |
| A | 12/12/07 | Addition to Parts Table, and revised Work Instructions |
| - | 12/07/07 | Initial issue |

TO: ALL MERCEDES-BENZ CENTERS

SUBJECT: **MODELS 203/211/220 4MATIC**
MODEL YEARS 2005 - 2007
REPLACE TRANSFER CASE

This Service Campaign has been initiated because DCAG has determined that on the affected vehicles optimized transfer cases will reduce vibrations when cornering or when parking. Dealers will check a serial number on the transfer case and replace the transfer case on affected vehicles, if required, during the next workshop visit.

Prior to performing this Service Campaign:

- Please check VMI to determine if the vehicle is involved in the Campaign and if it has been previously repaired.
- Please review the entire Service Campaign bulletin and follow the procedure steps exactly as described.

Please note that Recall and Service Campaigns **do not expire** and may also be performed on a vehicle with a vehicle status indicator.

Approximately 12,880 vehicles are affected.

Order No. P-SC-2007100004

This bulletin has been created and maintained in accordance with MBUSA-SLP S423QH001, Document and Data Control, and MBUSA-SLP S424HH001, Control of Quality Records.

Check/Test Procedure

1. Remove rear engine compartment paneling.
2. Check serial number at transfer case (A, Figure1)
 - a) If serial number is **between** 115925 and 137342: **Carry out work procedure.**
 - b) If serial number is **not** between 115925 and 137342: Reinstall rear engine cover - **end measure.**

Note:

Do **not** replace transfer case if numbers 0085 are indicated after the serial number regardless if transfer case falls in the serial number range or not.

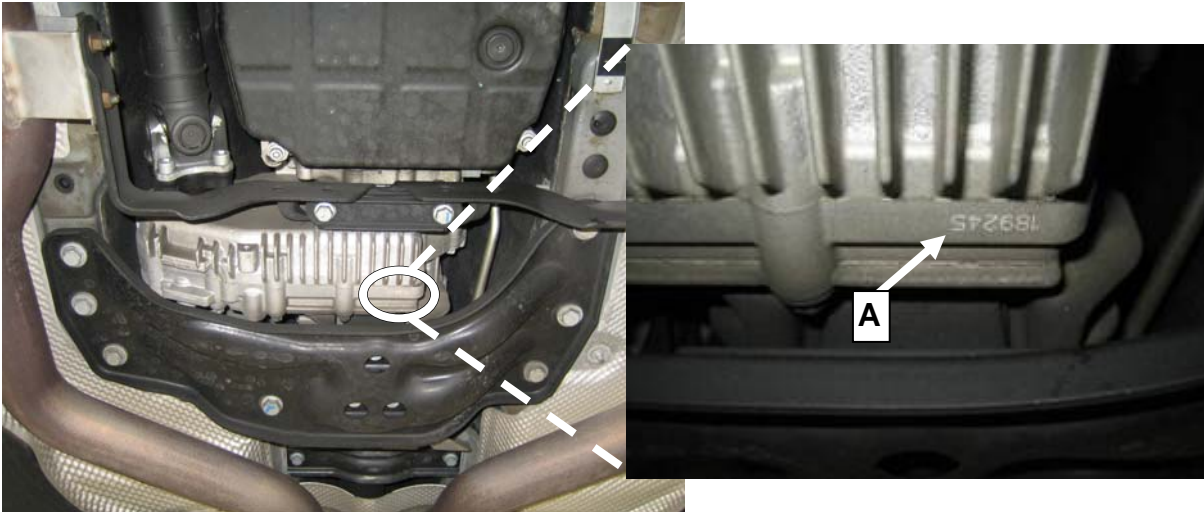


Figure 1

Procedure

Note:

Refer to the MSDS (via NetStar or the Parts Assistance Center website) for a complete description of hazards and other important safety information.

1. Replace transfer case, for model:
 - 203, refer to WIS: AR28.10-P-0100P
 - 211, refer to WIS: AR28.10-P-0100T
 - 220, refer to WIS: AR28.10-P-0100I

Note:

- Reuse dowel pins for transfer case. If dowel pins remain in transfer case housing after removal (of transfer case), they must be removed and reinstalled into transmission dowel bores.
 - **DO NOT REUSE Transfer Case front drive shaft bolts and rear drive shaft nuts. Always use new fasteners (self locking nuts, self locking bolts). See Parts Table.**
DO NOT RE-USE Catalytic Converter Bracket nuts. Always use new fasteners (self locking nuts). See Parts Table.
2. Transfer case return information:
 - **DRAIN ALL GEAR OIL FROM OLD TRANSFER CASE OUT THE DRAIN HOLE BEFORE REPACKAGING.**
 - Ensure plugs from drain hole, filler hole and vent port are installed.

- Secure old transfer case together for shipping using 4 transport bolts (A, Figure 2) and 4 nuts (arrows) included with new transfer case. Torque nuts (arrows) to 25 Nm.
- Ensure removed transfer case is returned in same packaging that contained the new one:
 - Ensure that the old transfer case is not damaged during removal or packaging.
 - The supporting card board inserts provided must be reused during packaging. The old transfer case must be packaged in the same manner as was the new one (refer to Figures 3-6 below).

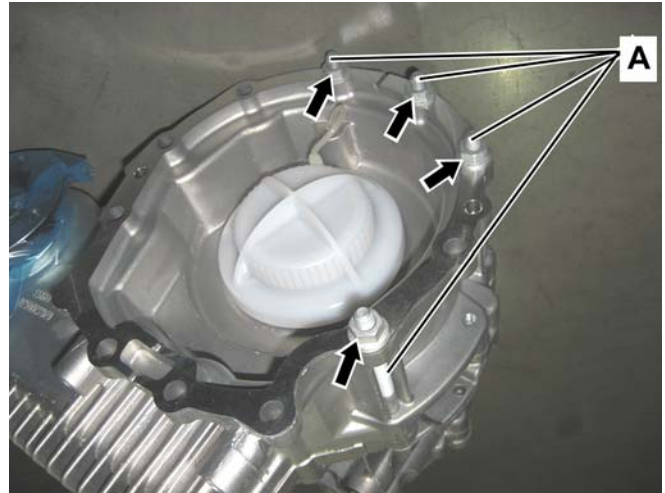


Figure 2



Figure 3



Figure 4



Figure 5

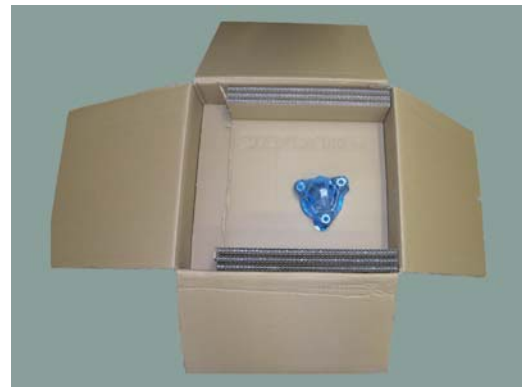


Figure 6

- Generate bar code label and return it with the old transfer case.
- Print out and complete return slip (next page) and place inside transfer case shipping box. The serial number (A, Figure 1) is stamped on the old transfer case

Return shipment of old transfer case

Code: 0706P28A60 (internal DCAG work instruction number)
Accounting number/
Damage code: 28 900 32

Ship to:
QEC
Jacksonville Fla.

Important

Complete return slip and place inside transfer case shipping box:

| | |
|--|-------|
| VIN – number | _____ |
| Mileage reading | _____ |
| Old Transfer case serial number | _____ |
| Repair date | _____ |

| | |
|----------------------------------|--|
| Dealer Code & Address | |
|----------------------------------|--|

| | |
|-------------------------|---------|
| Operation number | 02-5769 |
|-------------------------|---------|

| | |
|--------------------------|----------------------|
| Old Transfer case | Part number: A |
|--------------------------|----------------------|

Note: (regarding WIS work instructions AR28.10-P-0100T/AR28.10-P-0100I/AR28.10-P-0100P)

The new transfer case will be shipped filled with transfer case fluid. It should not be necessary to add an additional 0.59 L of transfer case fluid to the new transfer case as indicated in the WIS instructions. However, as indicated previously in this procedure; the fluid level in the new transfer case must still be checked and topped off if necessary.

Primary Parts Information

| Qty. | Part Name | Part Number | Estimated Replacement Rate |
|-----------------|---|----------------------------------|----------------------------|
| 1 | Transfer case: Models 203/211 087/287 | A203 280 07 00 ¹⁾ | 95% |
| 1 | Transfer case: Model 211 083/283 Model 220 183/184 | A220 280 07 00 ¹⁾ | 95% |
| 3 | Nut, rear drive shaft Model 203 4Matic | A 124 990 14 51 02 | 95% |
| 3 | Nut, rear drive shaft Models 211 087/287 | A 124 990 14 51 | 95% |
| 3 | Nut, rear drive shaft Model 211 083/283 Model 220 183/184 | A 005 990 19 51 | 95% |
| 4 | Nut, catalytic converter bracket (model series 203/211) | A 120 142 00 72 | 95% |
| 4 | Nut, catalytic converter bracket (model series 220) | A 140 990 07 50 | 95% |
| 2 (If required) | Dowel pins | N 000 007 00 8108 05 | 95% |
| 1 | Grease | A 001 989 44 51 05 ²⁾ | 95% |
| 4 | Bolts, front drive shaft | N 000 000 00 30 47 | 95% |
| 1 | Transfer case fluid | A 001 989 23 03 11 ³⁾ | 95% |

¹⁾ Observe return instructions as described on previous page.

²⁾ Container is sufficient for 5 vehicles. Submit as local purchase GSR00182, qty of 1, handling is included.

³⁾ Container is sufficient for 25 vehicles. Submit as local purchase TFL00213, qty of 1, handling is included.

Note:

Top-off new transfer case to the proper oil fill level (if required) with specified transfer case fluid (see parts table above) as indicated in WIS instructions on page 2.

Note:

- Please be aware that only the part number(s) referenced in the Campaign Bulletin is/are approved for use to repair the vehicle. Repairs performed using any other part(s) will not have been performed in accordance with the campaign. Accordingly, warranty claims submitted with reference to an improper part number(s) will be denied.
- The following allowable labor operation should be used when submitting a warranty claim for this repair:

Warranty Information

Operation: **TRANSFER CASE, CHECK (02-5877)**
 TRANSFER CASE, REPLACE (02-5769)

| Damage Code | Operation Number | Labor Time (hrs.) | Model Indicator(s) |
|--------------------|-------------------------|--------------------------|---|
| Procedure 1 | | | |
| 28 900 32 8 | 02-5877 | 0.2 | M6, M7, T5, T8, U3, U7, P6, P7, P8, P9, Q8, QA |
| Or Procedure 2 | | | |
| 28 900 32 7 | 02-5877 | 0.2 | M6, M7, T5, T8, U3, U7, P6, P7, P8, P9, Q8, QA |
| | 02-5769 | 2.6 | P6, P7, P8, P9, Q8, QA |
| | | 3.1 | M6, M7 |
| | | 3.2 | T5, T8, U3, U7 |