

F32

F32

200
(150)

150
(30)

75
(30)

71
(50)

30

68

69

75

71

U742
80,0 BK
70,0 BK

U74

25,0 RD

U742

10,0 RD

U151
U152
U425
U484
U819
U880
(U150)

10,0 RD (12,0 RD)

W2

10,0 BN (12,0 BN)

U742

10,0 RD

W9

12,0 BN

05/06
(06/06-)

4

3

G1

PE 83.40-U-2101DB
R22/3

PE 07.16-U-2101DD
N14/2

11

PE 54.21-U-2122DA
N10/11

M4/7

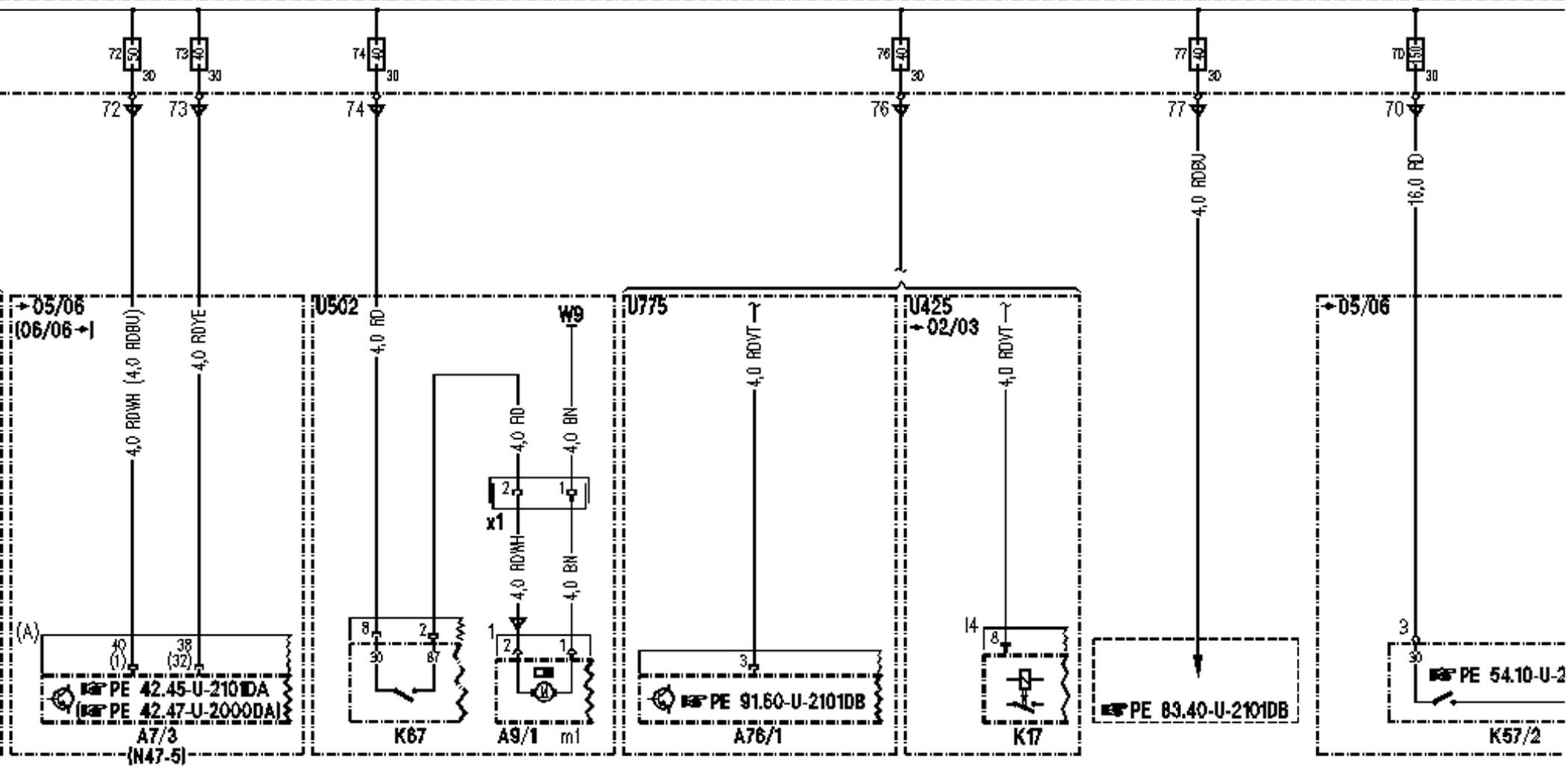
M4/7

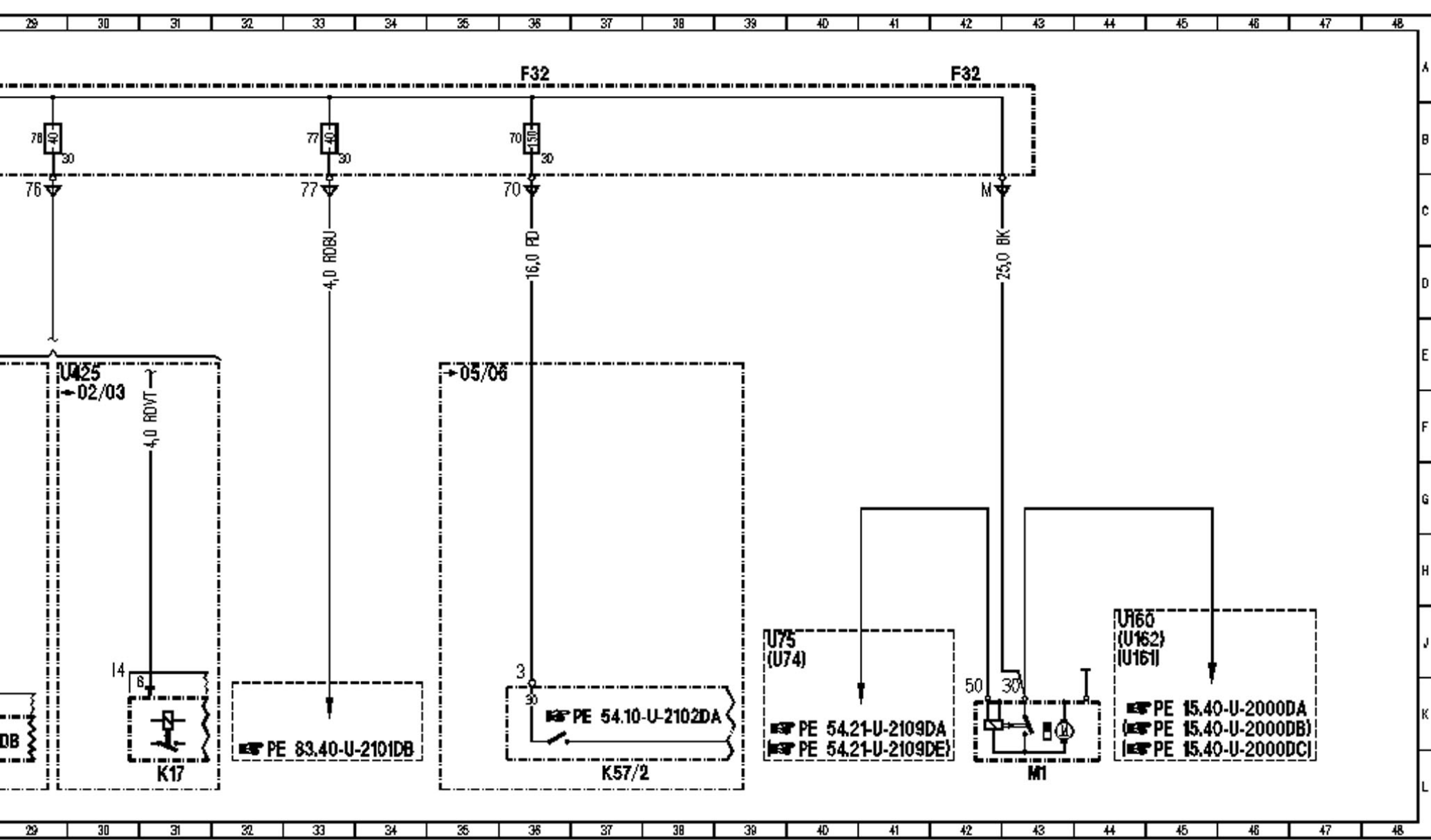
(A)

F32

F32

F32





Item	Designation
<u>A7/3</u>	Traction system hydraulic unit
<u>A9/1</u>	AIRmatic compressor unit
<u>A9/1m1</u>	Air compressor motor
<u>A9/1x1</u>	Air compressor motor connector
<u>A76/1</u>	Right front reversible emergency tensioning retractor
<u>F32</u>	Front prefuse
<u>F32f68</u>	Fuse 68
<u>F32f69</u>	Fuse 69
<u>F32f70</u>	Fuse 70
<u>F32f71</u>	Fuse 71
<u>F32f72</u>	Fuse 72
<u>F32f73</u>	Fuse 73
<u>F32f74</u>	Fuse 74
<u>F32f75</u>	Fuse 75
<u>F32f76</u>	Fuse 76
<u>F32f77</u>	Fuse 77
<u>G1</u>	Battery
<u>K17</u>	AIR relay module
<u>K57/2</u>	Auxiliary battery relay
<u>K67</u>	AIRmatic relay
<u>M1</u>	Starter
<u>M4/7</u>	Electric suction fan engine and AC with integrated control
<u>N10/11</u>	Passenger-side SAM control module
<u>N14/2</u>	Preglow output
<u>N47-5</u>	ESP control module
<u>R22/3</u>	Heater booster
<u>U74</u>	Valid for diesel vehicles
<u>U75</u>	Valid for gasoline engines
<u>U150</u>	Valid for engine 112
<u>U151</u>	Valid for engine 113
<u>U152</u>	Valid for engine 156
<u>U160</u>	Valid for alternator without interface
<u>U161</u>	Valid for alternator with LIN
<u>U162</u>	Valid for alternator with bit synchronous interface
<u>U425</u>	Valid for E 55 AMG
<u>U484</u>	Valid for M273 ME
<u>U502</u>	Valid for AIRmatic
<u>U742</u>	Valid for engine 648
<u>U775</u>	Valid for reversible emergency tensioning retractor
<u>U819</u>	Valid for engine 272
<u>U880</u>	Valid for engine 642
<u>W2</u>	Ground (at right headlamp unit)
<u>W9</u>	Ground (at left headlamp unit)