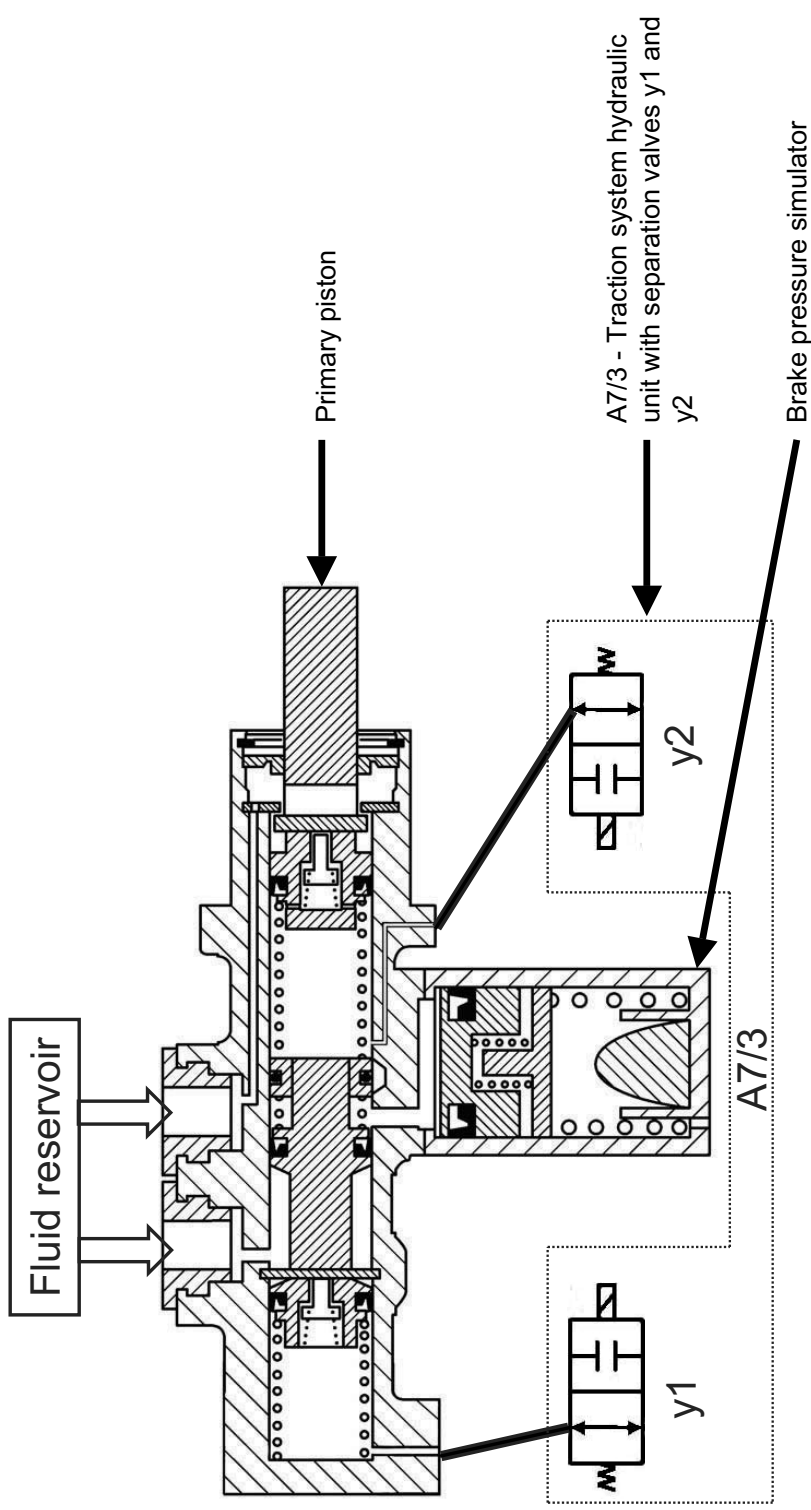
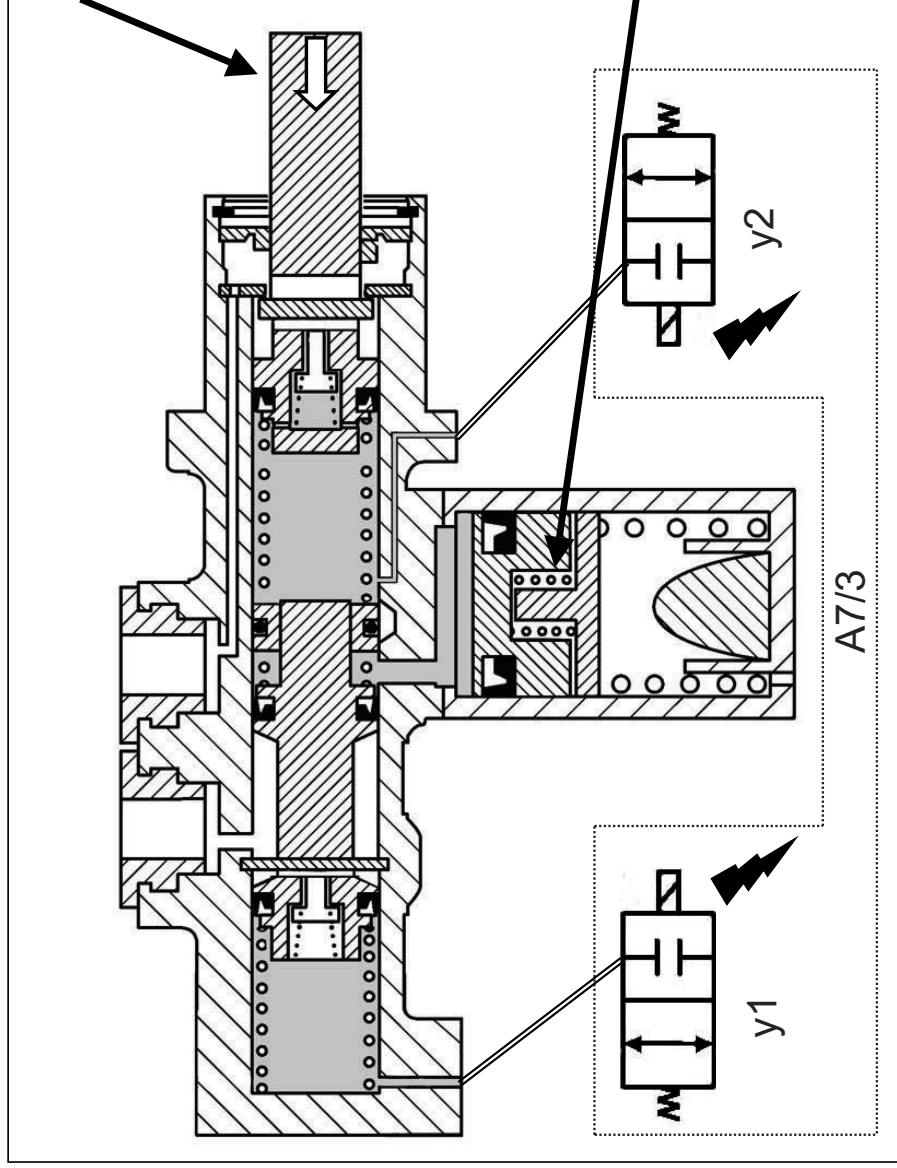


BOU Tandem Master Cylinder



Normal Braking - Light Pressure

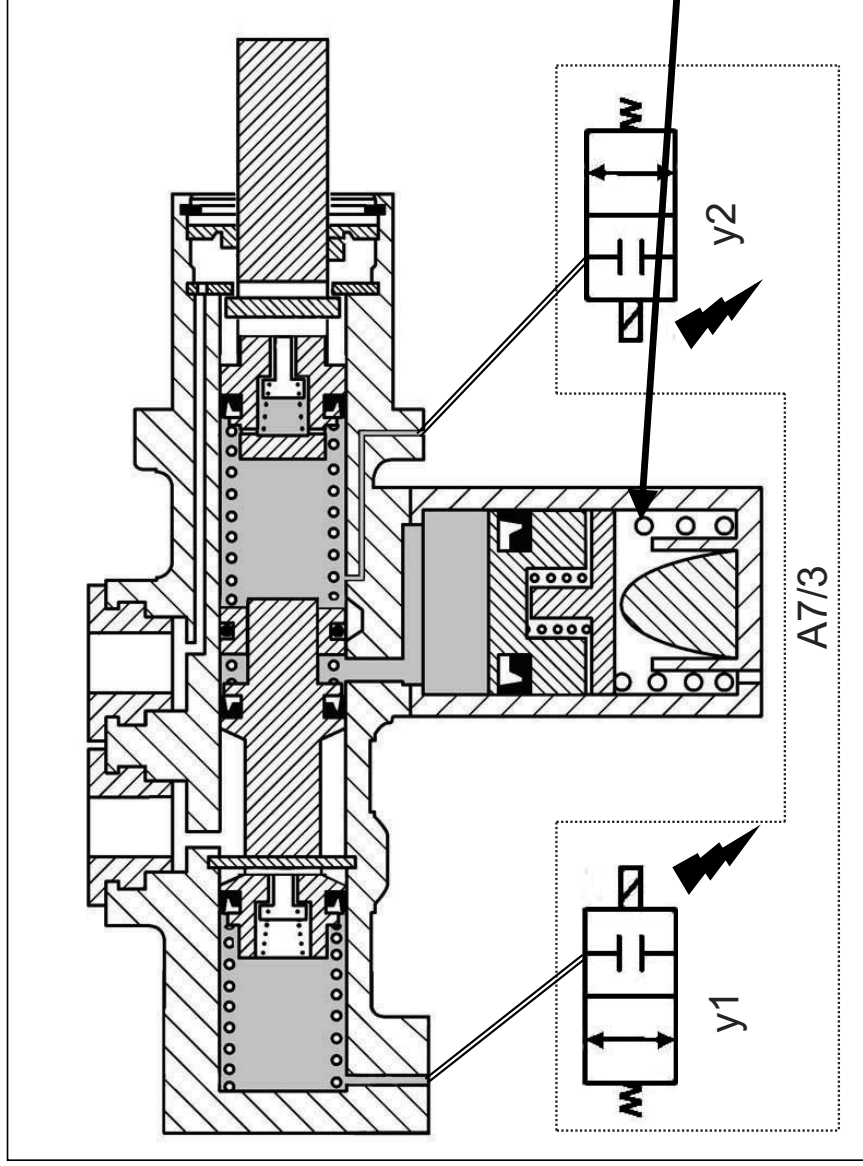


- Driver applies pressure to the brake pedal

- y1 and y2 energized, preventing fluid movement externally

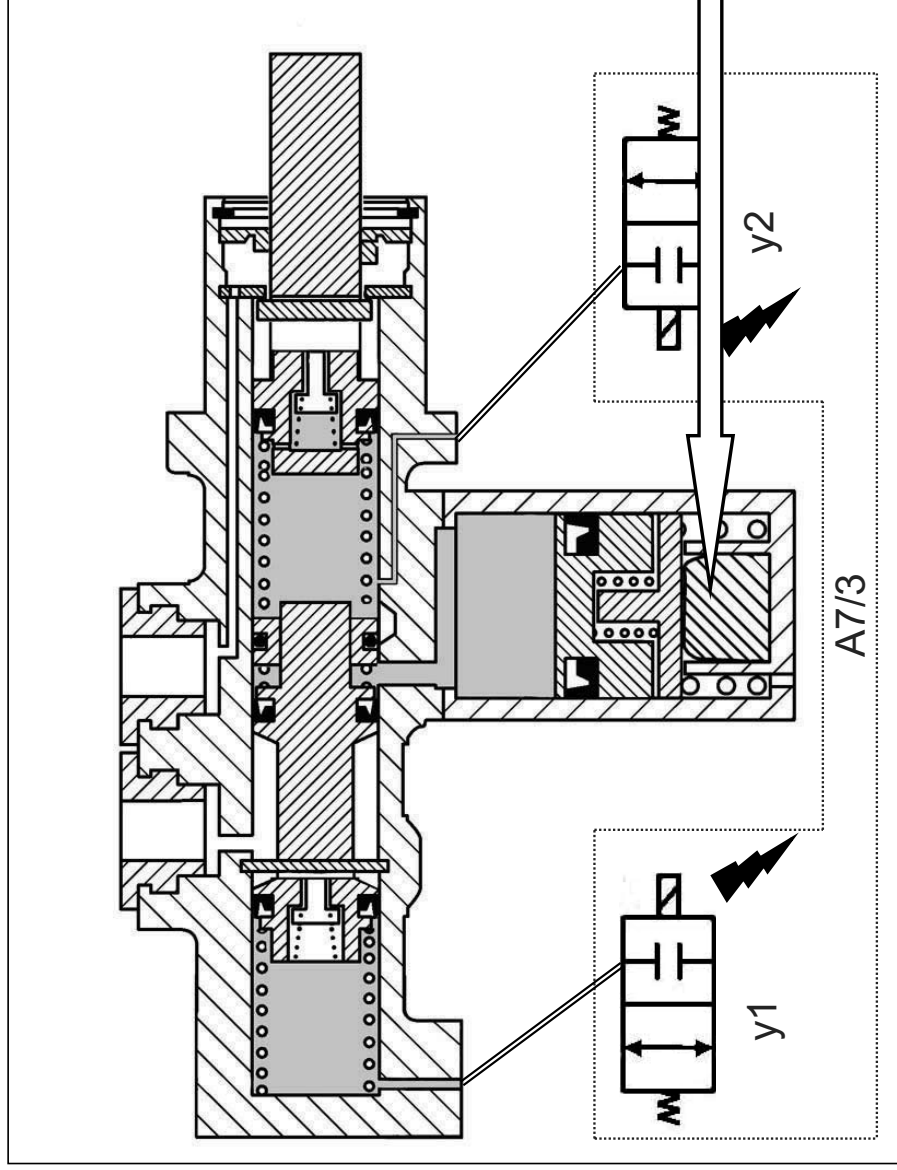
- Floating piston allows fluid to enter simulator, compressing the light spring, providing pedal feel to the driver

Normal Braking - Increased Pressure



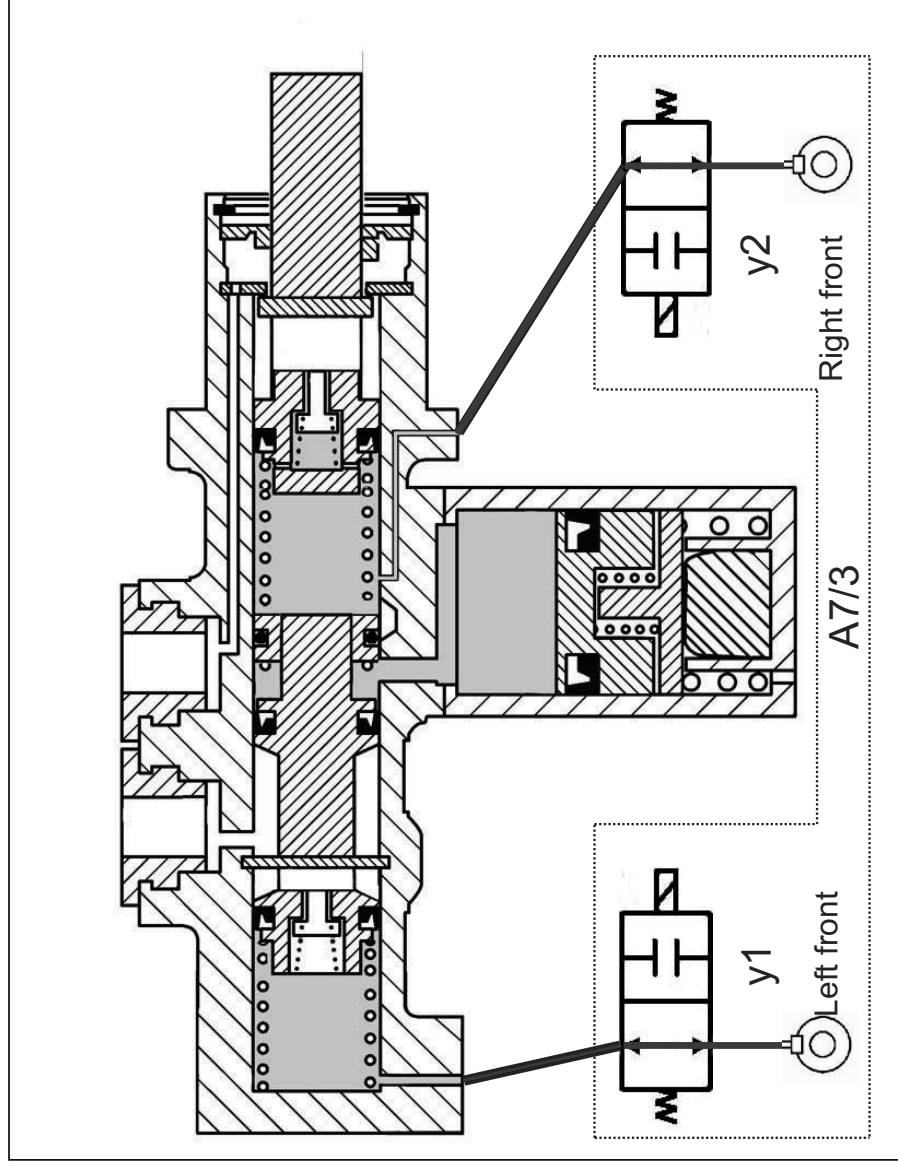
- Increasing pedal travel causes the larger spring to compress, providing harder pedal feel

Normal Braking - Strongest Feedback



- Further pedal travel causes piston to compress rubber bumper, providing greatly increased pedal pressure

Emergency Operation



- All electrical functions canceled
- Hydraulic pressure created with NO power assist
- Pressure directed through A7/3 y1 and y2 to

Left Front and
Right Front calipers
only!