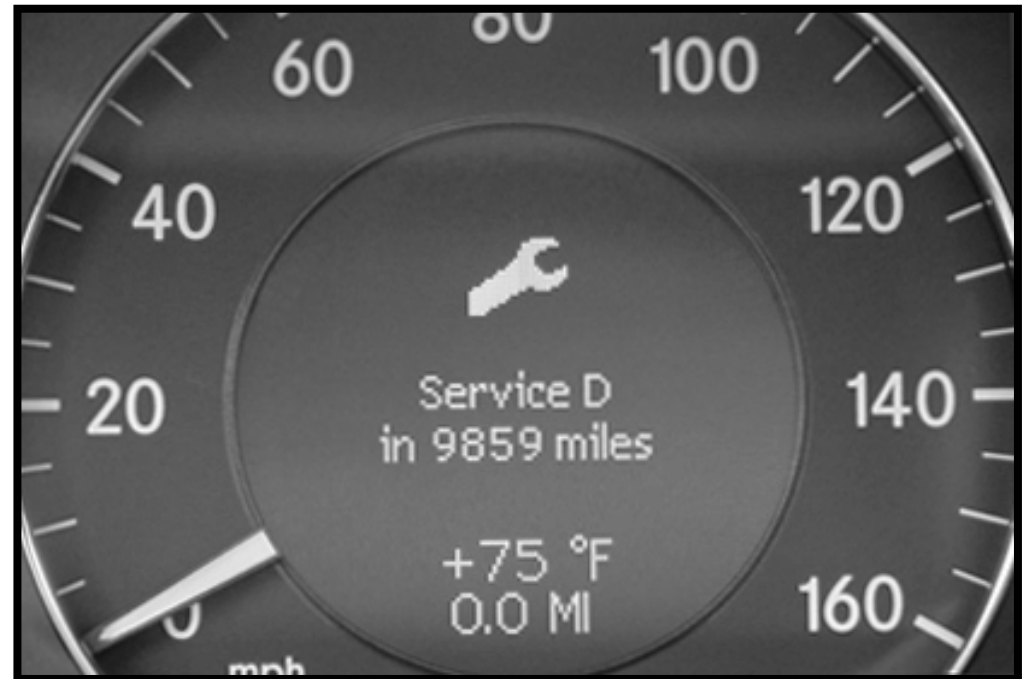


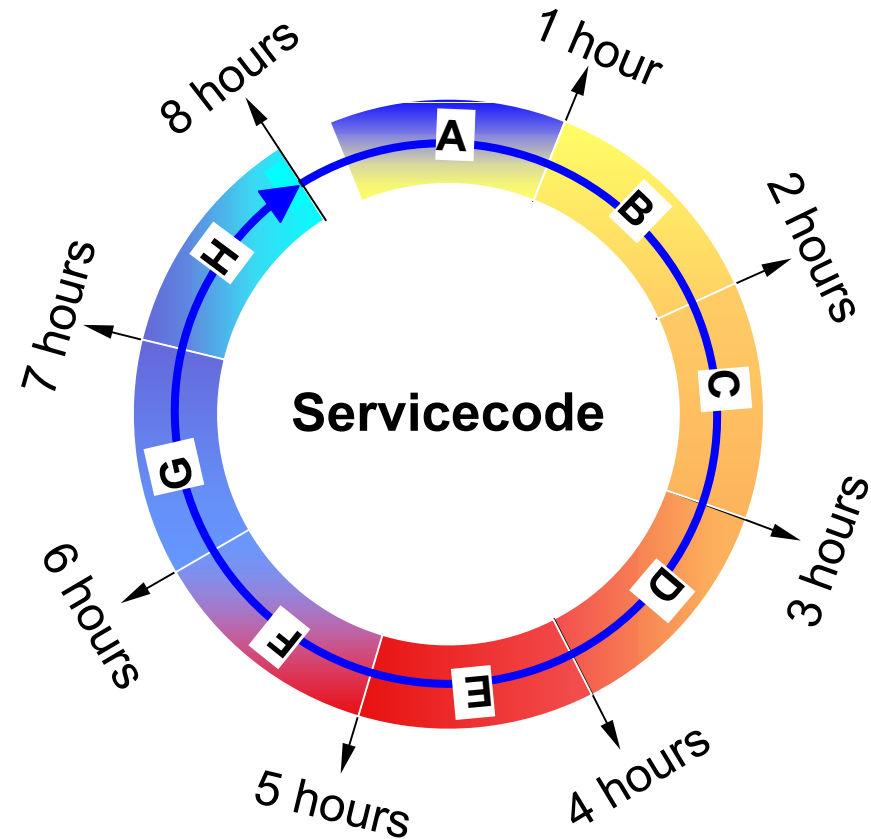
# FSS PLUS Displays (Customer)

- Customer display
- Codes A-H are displayed
- Accessed using the multi-function steering wheel (as before)



# Interpreting Service Codes

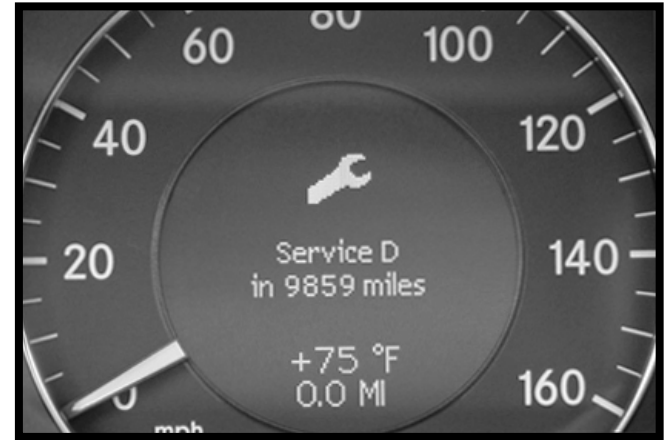
- Determined by the maintenance calculation
- Each service code has a corresponding estimated time
- “+” next to a service code indicates need for brake service (inspection)
  - i.e. D+



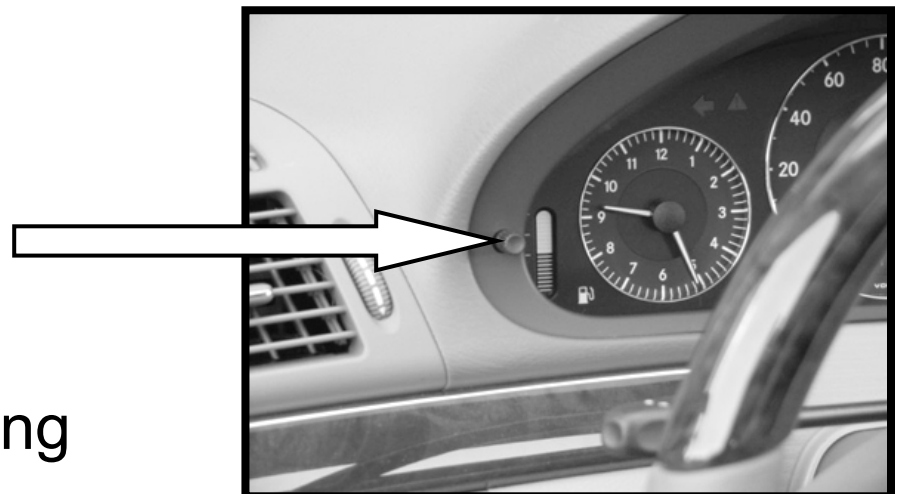
Note: Service codes are used for estimating time ONLY. They do NOT indicate the same service items for each code. Service items are determined by time and driving conditions.

# Accessing Workshop Information Multi-Function Displays

1. Begin at the customer display screen




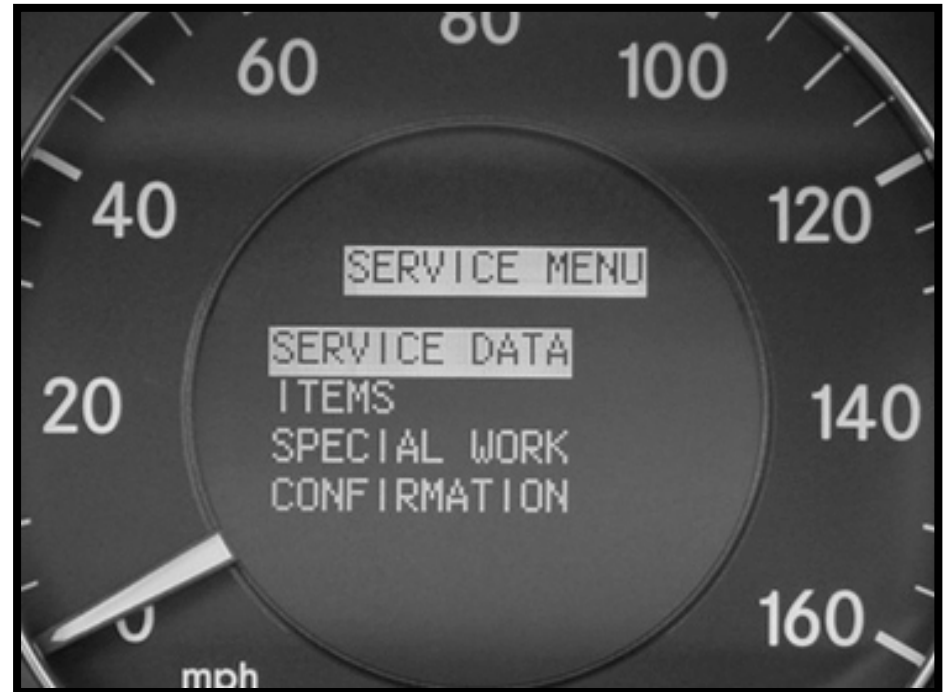
2. Press and hold the reset button for 5 seconds



3. Use the multi-function steering wheel for scrolling

# Service Menu Screen

- Initial screen that appears when accessing FSS PLUS
- Scroll up and down using the **+** and **-** buttons
- Select menu using  button



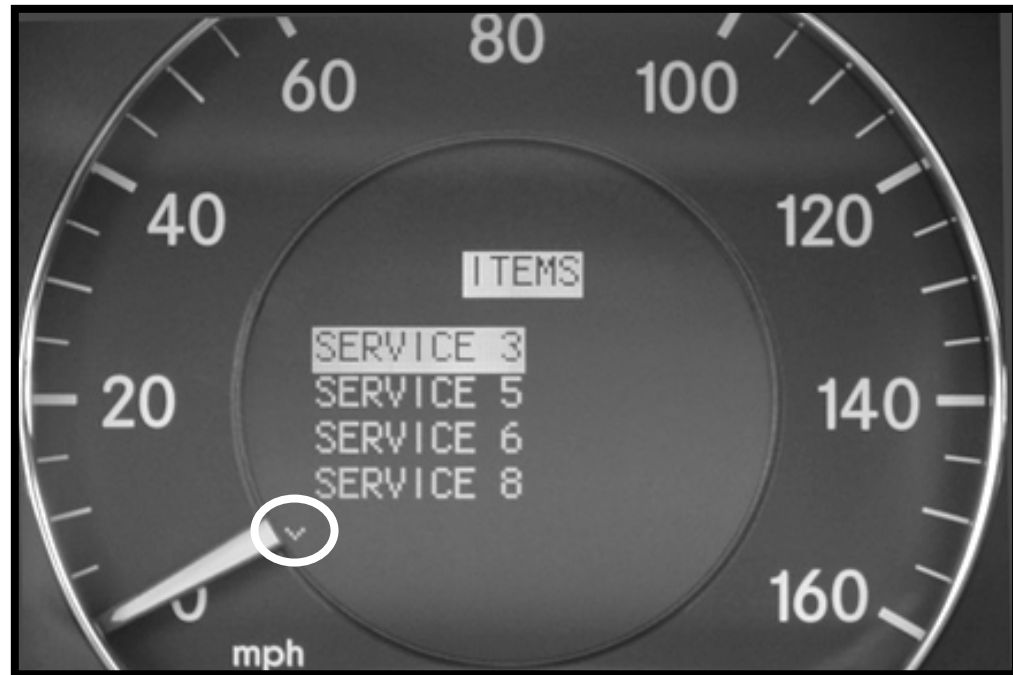
# Service Data Screen

- “58M21” used in the future for generating a service sheet via SDS/WIS
- “Weighting” time it will take to perform the service items
  - displayed in minutes
- Miles/days remaining
  - same as before



# Items Screen

- Required service items
- Refer to service sheet for detailed break-down
- “^” or “v” indicator in the display indicates additional items
  - use **+** / **-** buttons for scrolling



# Confirmation Screen

- Confirms service performed in central gateway (N93)
- All service items listed can be confirmed and cancelled
- Individual service items can be cancelled
- Scroll up and down using the **+** and **-** buttons
- Select option using **☐** button



Key must be in position 2 in order to confirm service

# Special Work Screen

- Allows you to manually set a date for:
  - exhaust gas analysis
  - general inspection



- Scroll up and down using the **+** and **-** buttons
- Change month and year using the **↶** and **↷** buttons







AP00.20-U-1205A	SERVICE SHEET for Flexible Service System Plus (FSS +)	25.7.02
-----------------	--	---------

Model 211

Passenger cars

USA/CANADA:

System is also known as "Active Service System Plus "(ASSYST +)" in the Workshop Information System (WIS)

# Model 211



Customer: \_\_\_\_\_ Repair order number: \_\_\_\_\_

Current mileage reading: \_\_\_\_\_ Oil grade/viscosity: \_\_\_\_\_

Additional notes: \_\_\_\_\_  
 \_\_\_\_\_  
 \_\_\_\_\_

Service work to be performed as advised by service advisor: _____	Completion date _____	Confirm work has been performed by technician signing below: _____
--	--------------------------	---



US Service 1 through US Service 11 apply to "Additional work" items only.  
 Vehicle determines need for US Service 12 (Engine oil and filter change) as well as US Service 13 or US Service 14 (formerly A-Service and B-Service respectively).  
 Perform service necessary as indicated in display of instrument cluster only.  
 Perform each service as described.

Completed 

Not OK

**US Service 1** Display in instrument cluster

Wheels, brakes

- Check brake pads for thickness,  
Check condition of brake discs

 AP42.10-P-4251R**US Service 2** every 60,000 mi/96,000 km or 4 years

Engine compartment

- Replace air-cleaner insert Engines 112, 113

**US Service 3** every 30,000 mi/48,000 km or 2 years

Engine compartment

- Replace combination filter Model E320

 AP83.00-P-8384T**US Service 4** every 30,000 mi/48,000 km or 2 years

Engine compartment

- Replace dust filter Model E500

 AP83.00-P-8381T**US Service 5** every 60,000 mi/96,000 km or 5 years

Engine compartment

- Replace fuel filter Engines 112, 113

 AP47.20-P-0780TC**US Service 6** every 60,000 mi/96,000 km or 5 years

Engine compartment

- Replace activated charcoal Model E500

 AP83.00-P-8382F**US Service 7** every 100,000 mi/160,000 km or 5 years

Engine compartment

- Replace spark plugs Engines 112, 113

 AP15.10-P-1580AB**US Service 8** every 150,000 mi/250,000 km or 15 years

Engine compartment

- Replace coolant Gasoline engines

 AP20.00-P-2080DA**US Service 9** every 2 years

- Check bodywork for paintwork damage  
by service advisor

 AP98.00-P-9850BA

Underside of vehicle

- Chassis and load-bearing body components:  
Check for damage and corrosion  
by service advisor

 AP00.20-P-0090BA

Engine compartment

- Replace brake fluid
- Check preload pressure of pressure reservoir

AP42.00-P-4281T

**US Service 10** every 3 years

Passenger compartment

- Sliding/pop-up roof: Clean slide rails and slide shoes

AP77.20-P-7731A

**US Service 11** every 3 years

Passenger compartment

- Panoramic sliding roof: Clean and lubricate guide mechanism

AP77.20-P-7732PB

**US Service 12**

Engine compartment

- Engine - oil and filter change

Engine 112

AP18.00-P-0101AE

Engine 113

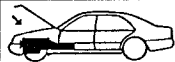
AP18.00-P-0101AF



US Service 13    US Service 14



Not OK



Engine compartment

- Visually check for leaks in major assemblies, damaged components, line routing and chafing marks.  
In the event of fluid loss, determine cause and rectify subject to separate repair order.

AP00.20-P-0053BA

- Check auxiliary battery (12ah) (located underneath A/C combination/dust filter, R/H rear side of engine compartment) condition using "Midtronics MCR 717" Tester

S154.10-P-0003A

- Inspect poly-V-belt for damage

AP13.22-P-1351Z

- Check catch and safety catch and hinges on engine hood for ease of operation.  
Replace components no matter how insignificant the defect.

AP88.40-P-8851T

Check fluid level, correct as required

- Brake system
- Power steering  
If fluid loss is discovered, ascertain and rectify the cause as a separate repair order.
- Windshield wipers, washer system (incl. summer/winter cleanser)

AP42.10-P-4210Z

AP46.00-P-4611BB

AP82.30-P-8252T



## Interior

### Function test

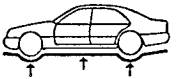
- Warning/indicator lamps, illumination and interior lighting
- Windshield wipers, washer system, head-lamp cleaning system  AP82.30-P-8252T
- Check safety belts and buckles for signs of external damage and function  AP91.40-P-9150M
- Reset service indicator in instrument cluster
- Check parking brake (function test only)  AP42.00-P-4290R



## Wheels, brakes

- Inspect tires for damage and splits, measure tread depth, enter in mm  AP40.10-P-4051Z
 

	LF	RF	LR	RR
Outside	_____	_____	_____	_____
Center	_____	_____	_____	_____
Inside	_____	_____	_____	_____
- Check thickness of brake pads (remove 1 front wheel at Service 13)  AP42.10-P-4251R
- Check thickness of front/rear brake pads (required at Service 14)  AP42.10-P-4251R
- Correct tire inflation pressure (incl. spare tire)



## Underside of vehicle

- Visually check for leaks in major assemblies, damaged components, line routing and chafing.  AP00.20-P-0053BA  
In the event of fluid loss, determine cause and rectify subject to separate repair order.
- Check front axle joints for play, check rubber boots  AP33.20-P-3353BA
- Inspect condition of flexible discs  AP41.10-P-4152Z
- Inspect play of tie rod and drag link joints, inspect rubber boots  AP46.00-P-4653F



## Trunk

- Check battery condition using "Midtronics MCR 717" Tester  SI54.10-P-0003A