

## - Parts list -

<b>Mode</b>	BM mode	<b>Catalog</b>	66Y
<b>VIN/mod. des.</b>	WDB2100821X041078	<b>Group</b>	54 ELECTRICAL EQUIPMENT AND INSTRUMENTS
<b>VIN</b>	WDBJF82J8YX041078		
<b>Assortment class</b>	PC	<b>Sub-group</b>	665 BRAKE PAD WEAR INDICATOR AND SPEED SENSOR,FRONT AND REAR AXLE
<b>Market</b>			
<b>BM overview</b>	E 320 4MATIC		

Copyright 2020-10-20 Daimler AG

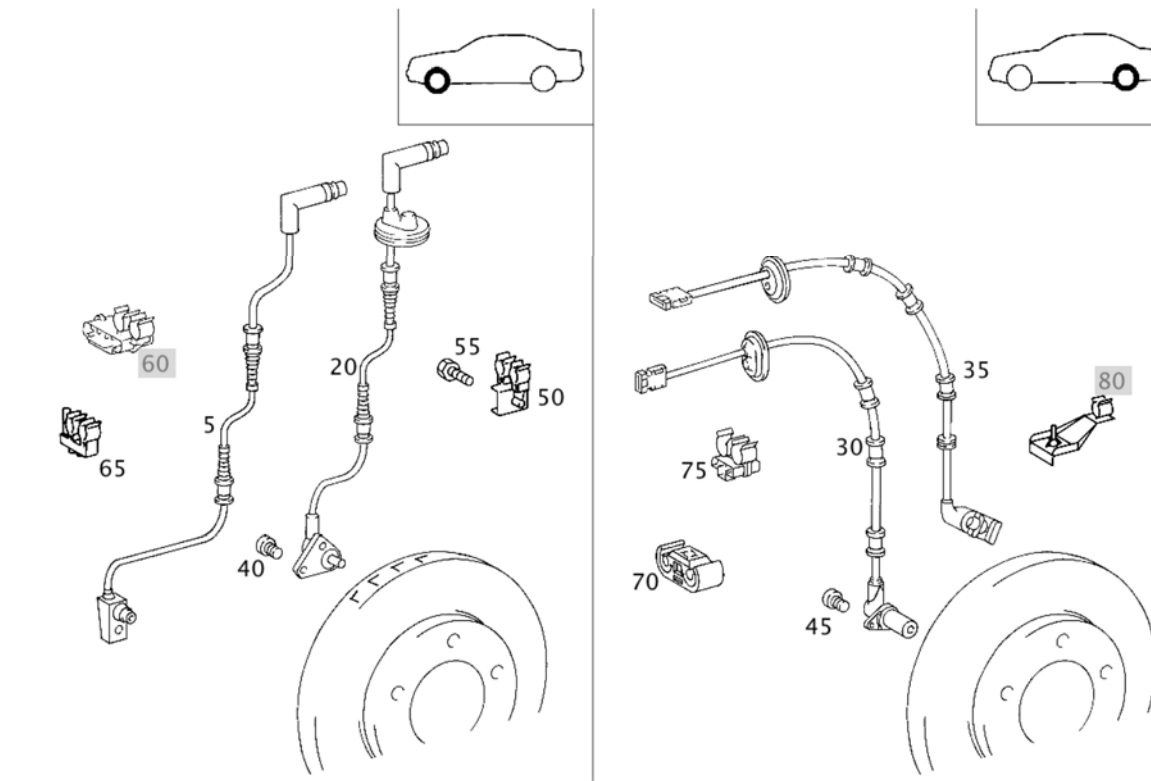











Image ID: drawing\_B54665000024

Item	Part number	Designation/additional information	Qty
5	A 210 540 50 10	<b>WIRING HARNESS</b> FRONT BRAKE LINING WEAR INDICATOR  Code: M112+M005;	2
20	A 210 540 48 10	<b>WIRING HARNESS</b> (SPEED SENSOR), FRONT LEFT  Code: M005+(M112+(M32/M28)/M113+M43);	1
20	A 210 540 49 10	<b>WIRING HARNESS</b> (SPEED SENSOR), FRONT RIGHT  Code: M005+(M112+(M32/M28)/M113+M43);	1
30	A 210 540 07 17	<b>ROTATIONAL SPEED SENSOR</b> (SPEED SENSOR), REAR RIGHT	1
30	A 210 540 06 17	<b>ROTATIONAL SPEED SENSOR</b> (SPEED SENSOR), REAR LEFT	1
35	A 210 540 93 08	<b>WIRING HARNESS</b> BRAKE WEAR INDICATOR, REAR AXLE, RIGHT  Code: M112+M32;	1
40	A 210 990 11 12	<b>BOLT</b> SENSOR TO STEERING KNUCKLE  Code: M005+(M112+(M32/M28)/M113+M43);	2
40	A 210 990 11 12	<b>BOLT</b> SENSOR TO STEERING KNUCKLE  Code: M112+M005;	2
45	N 914125 006502	<b>SCREW</b> (SPEED SENSOR),REAR LEFT AND RIGHT; M6X12  Plant information	2
50	A 210 546 01 43	<b>BRACKET</b> ON TRACK ROD	2
55	A 210 984 01 29	<b>SCREW</b> FASTENING BRACKET LEFT	1
55	A 210 984 01 29	<b>SCREW</b> FASTENING BRACKET RIGHT  Code: -(612/617);	1
65	A 210 546 02 43	<b>BRACKET</b> CLIPSED ON TRACK ROD BRACKET	2
70	A 124 476 09 40	<b>CLAMP</b> BRAKE LINE FASTENING AND BRAKE WEAR INDICATOR  Code: M005+(M112+(M32/M28)/M113+M43);	2
75	A 202 546 33 43	<b>BRACKET</b> CLIPPED ON TO BRACKET ON LEFT SIDE OF BRAKE CABLE BRACKET	1

<b>Item</b>	<b>Part number</b>	<b>Designation/additional information</b>	<b>Qty</b>
75	A 202 546 33 43	<b>BRACKET</b> CLIPPED ON TO BRACKET ON RIGHT SIDE OF BRAKE CABLE BRACKET	1