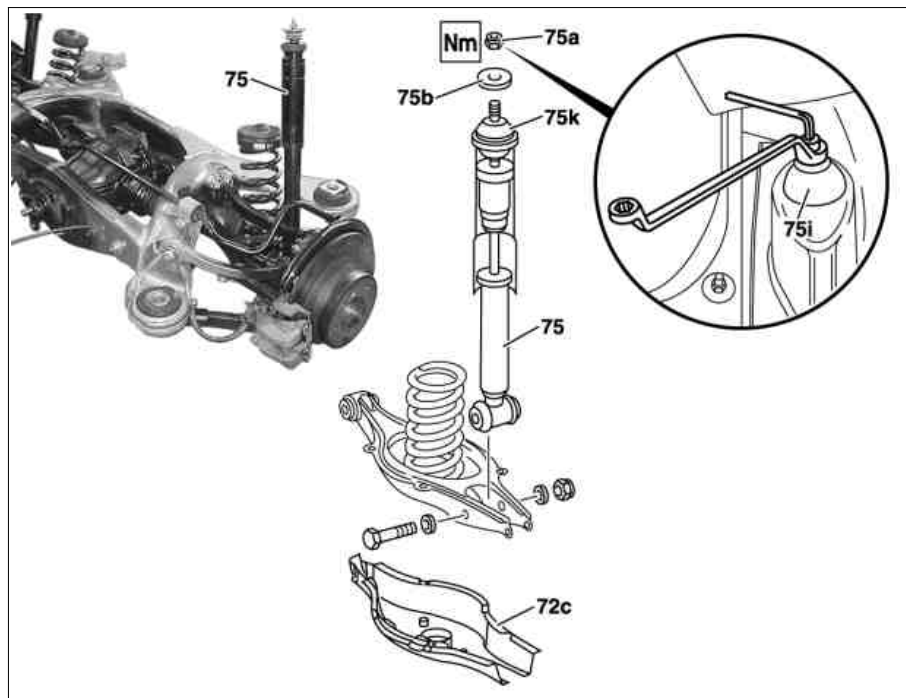


MODEL 211.0 except CODE (489) Airmatic (semi-active air suspension)

72c Cover
 75 Shock absorber
 75a Nut
 75b Washer
 75i Upper rubber mount
 75k Lower rubber mount



P32.25-2052-06

	Remove/install		
Danger!	Risk of injury caused by moving parts that can pinch, crush or , in extreme cases even sever extremities.	Keep body parts and limbs well clear of moving parts.	AS00.00-Z-0009-01A
	Notes on self-locking nuts and bolts		AH00.00-N-0001-01A
	While working on the rear axle, care must be taken to ensure that the surface of aluminum components do not get any scratches, cracks and notches. Otherwise the service life of the parts will be affected		
Installation	Tighten nuts and bolts of chassis components only when vehicle is in the ready-to-drive condition.		
1	Remove side paneling in trunk	Vehicles with through-loading feature, code 287 Vehicles without through-loading facility.	AR68.30-P-4800TA AR68.30-P-4800T
2	Counterhold piston rod and unscrew nut (75a)		*BA32.25-P-1001-03A
3	Remove washer (75b) and upper rubber mount (75i)		
4	Raise vehicle with lifting platform		AR00.60-P-1000T
5	Remove cover (72c) of spring control arm		
6	Detach shock absorber (75) from spring control arm		*BA32.25-P-1003-03A
7	Slide damper (75) together and remove		
8	Remove lower rubber mount (75k)		
	Checking		
9	Check upper and lower rubber mounts (75i, 75k)	Replace cracked, oiled and deformed rubber mounts.	
10	Check shock absorber (75) for damage		AR32.25-P-0121A
11	Install in the reverse order		

Rear axle shock absorber

Number	Designation	Model 211 steel suspension

		M10 Nm	20
BA32.25-P-1003-03A	Self-locking nut for attaching shock absorber to spring control arm	Nm	-
		M10 Nm	55