

Parts Information

- Parts list -

Vehicle

Color

FIN: WDB2110261A539143

Group

Print



Please select the required components for printing.

WDBUF26J35A539143 (64U)

E 320 CDI

744 - Brilliant silver metallic

Equipment

138 - twin leather, sierra grey

Parts list

Assortment class

PC

27 722.6 MERCEDES-BENZ

Sub-group

100 ELECTRONIC-HYDRAULIC
CONTROL UNIT

AUT.TRANSMISSIONs only

Shopping cart

Total basket

Current issue only

Data card

Without designation

With designation

Cancel

Confirm

Print

Please select the required components for printing.

Picture chart

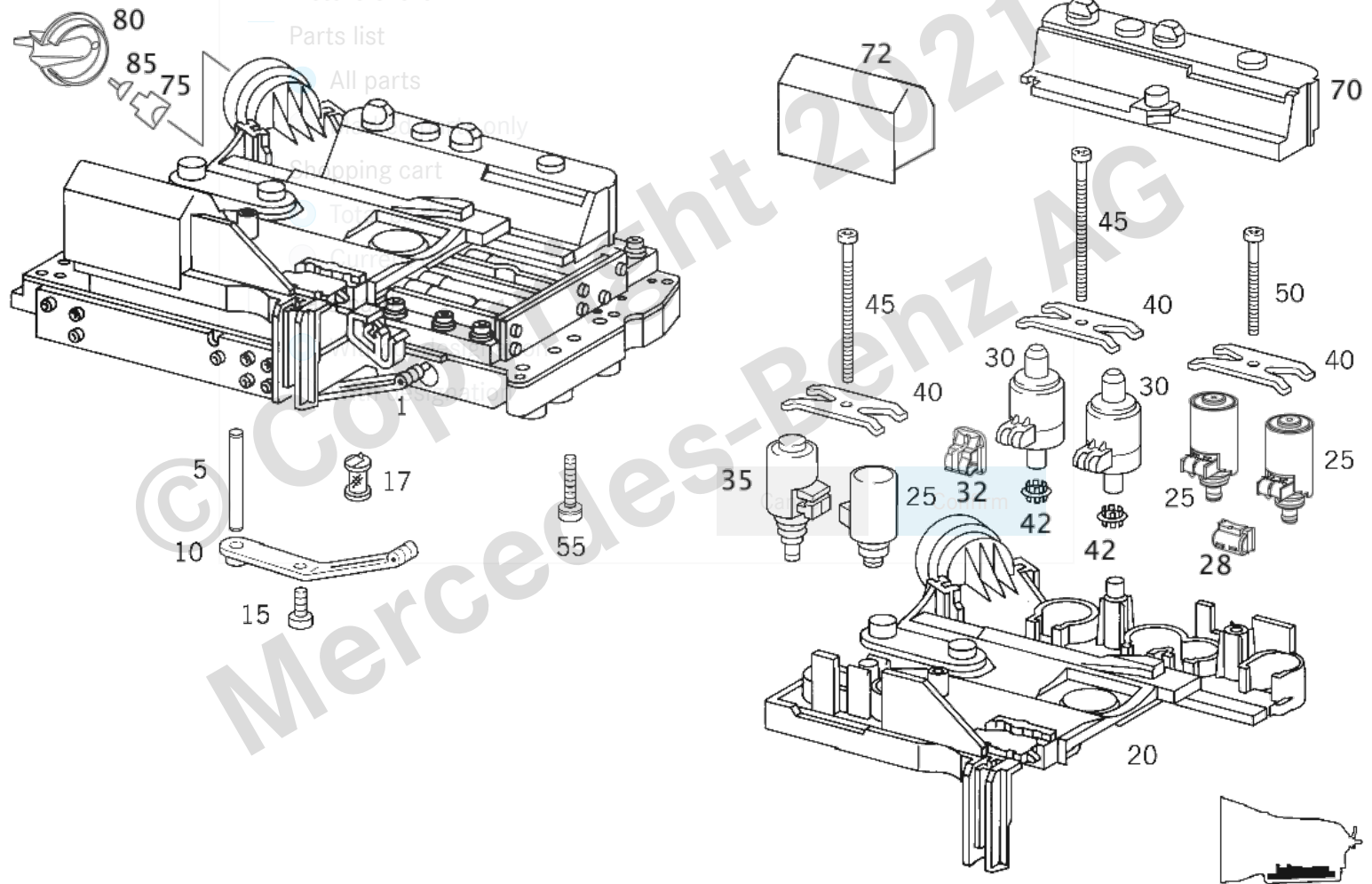
Parts list

All parts

Only

Shopping cart

Top



Parts Information

Print



Image ID: drawing_B27100000040

Item	Part number	Designation/additional information	Qty
1	A 140 270 06 06	* CONTROL ELECTRONIC-HYDRAULIC CONTROL UNIT [697, 210, 222] PART IS ONLY OR ALSO SUPPLIED AS RECONDITIONED PART [626]	1
1	A 211 270 00 06	* CONTROL ELECTRONIC-HYDRAULIC CONTROL UNIT [697, 211, 223] PART IS ONLY OR ALSO SUPPLIED AS RECONDITIONED PART [626]	1
5	A 140 277 00 75	** PIN Replaced by: A 140 277 01 75	1
5	A 140 277 01 75	** CYLINDER PIN Replaces: A 140 277 00 75	1
10	A 140 270 01 78	** SPRING DETENT-PLATE LEAF SPRING [402] NO LONGER AVAILABLE	1
15	A 140 277 08 71	** SCREW Replaced by: A 170 990 01 20	1
15	A 170 990 01 20	** SCREW Replaces: A 140 277 08 71	1
17	A 140 270 02 98	** FILTER	2

Cancel Confirm

Parts Information

Print









Item	Part number	Designation/additional information	Qty
20	A 140 270 01 61 	** ELECTRICS KIT Replaced by: A 140 270 03 61 Replaced by: A 140 270 05 61 Replaced by: A 140 270 07 61 Replaced by: A 140 270 08 61 Replaced by: A 140 270 11 61	-
20	A 140 270 03 61 	** ELECTRICS KIT Replaced by: A 140 270 05 61 Replaced by: A 140 270 07 61 Replaced by: A 140 270 08 61 Replaced by: A 140 270 11 61 Replaces: A 140 270 01 61	-
20	A 140 270 05 61 ↔	** TRANSM. ELECTRICS KIT Replaced by: A 140 270 07 61 Replaced by: A 140 270 08 61 Replaced by: A 140 270 11 61 Replaces: A 140 270 03 61 Replaces: A 140 270 01 61	-
20	A 140 270 07 61 ↔	** TRANSM. ELECTRICS KIT Replaced by: A 140 270 08 61 Replaced by: A 140 270 11 61 Replaces: A 140 270 05 61 Replaces: A 140 270 03 61 Replaces: A 140 270 01 61	1

Cancel Confirm

Parts Information

Print



Item	Part number	Designation/additional information	Qty
20	A 140 270 08 61  	** TRANSM. ELECTRICS KIT Replaced by: A 140 270 11 61 Replaces: A 140 270 07 61 Replaces: A 140 270 05 61 Replaces: A 140 270 03 61 Replaces: A 140 270 01 61	1
20	A 140 270 11 61  	** TRANSM. ELECTRICS KIT Replaces: A 140 270 08 61 Replaces: A 140 270 07 61 Replaces: A 140 270 05 61 Replaces: A 140 270 03 61 Replaces: A 140 270 01 61	1
25	A 140 277 01 35 	** VALVE Replaced by: A 140 277 05 35 Replaced by: A 240 270 01 89 Replaced by: A 240 270 02 89 Replaced by: A 240 270 16 00	-
25	A 140 277 05 35 	** SOLENOID VALVE Replaced by: A 240 270 01 89 Replaced by: A 240 270 02 89 Replaced by: A 240 270 16 00 Replaces: A 140 277 01 35	-

Cancel Confirm

Parts Information

Print



Item	Part number	Designation/additional information	Qty
25	A 240 270 01 89 	** SOLENOID VALVE SOLENOID VALVE Replaced by: A 240 270 02 89 Replaced by: A 240 270 16 00 Replaces: A 140 277 05 35 Replaces: A 140 277 01 35	3
25	A 240 270 02 89 	** SOLENOID VALVE SOLENOID VALVE Replaced by: A 240 270 16 00 Replaces: A 240 270 01 89 Replaces: A 140 277 05 35 Replaces: A 140 277 01 35	3
28	A 240 271 01 82 	** CAP [417] IS NO LONGER DELIVERED, ORDER DELIVERY CONTENTS	3
30	A 140 277 00 98 	** LIFTING MAGNET Replaced by: A 140 277 03 98 Replaced by: A 203 270 00 89	-
30	A 140 277 03 98 	** CONTROL SOLENOID Replaced by: A 203 270 00 89 Replaces: A 140 277 00 98	-
30	A 203 270 00 89 	** VALVE PRESSURE CONTROL VALVE Replaces: A 140 277 03 98 Replaces: A 140 277 00 98	2

Cancel

Confirm

Parts Information

Print



Item	Part number	Designation/additional information	Qty
32	A 240 271 00 82 	** CAP Please select the required components for printing. [417] IS NO LONGER DELIVERED, ORDER DELIVERY CONTENTS	2
35	A 140 277 00 35 	** VALVE Replaced by: A 140 277 04 35 Replaced by: A 240 270 17 00	-
35	A 140 277 04 35 	** VALVE SOLENOID VALVE Replaced by: A 240 270 17 00 Replaces: A 140 277 00 35	1
40	A 140 276 00 03 	** SPRING STEEL SHEET Replaced by: A 140 276 02 03	-
40	A 140 276 02 03 	** SPRING STEEL SHEET Replaces: A 140 276 00 03	3
42	A 140 270 04 98 	** FILTER	2
45	A 140 277 10 71 	** SCREW	2
50	A 140 277 11 71 	** SCREW	1
55	A 140 277 06 71 	** SCREW	10
70	A 140 271 07 82 	** CAP	1

Cancel

Confirm




Parts Information

Print ✕

Please select the required components for printing.

- Picture chart
- Parts list
- All parts
- Marked parts only
- Shopping cart
- Total basket
- Current issue only
- Data card
- Without designation
- With designation

Cancel
Confirm

Item	Part number	Designation/additional information	Qty
72	A 140 271 08 82 	** CAP  [402] NO LONGER AVAILABLE	1
75	A 001 540 99 81	SOCKET HOUSING 12-PIN LKS1.5	1
80	A 001 545 26 83	CAP	1
85	A 000 540 42 05	ELECTRIC LINE REPAIR SOLUTION CONTACTING 1.0 MM2; 1.0 MM2 LKS 1.5  [774] CONNECTORS MUST ALSO BE ORDERED ACCORDING TO THE TOTAL LINE CROSS-SECTION TO BE CONNECTED. FOR REPAIR INSTRUCTIONS, SEE WIS SOLD.CONN.SLVS: A 001 546 99 41 GREEN 0.7 - 2.4 MM2 A 002 546 00 41 RED 2.0 - 4.0 MM2 A 002 546 01 41 BLUE 3.5 - 8.0 MM2 A 002 546 11 41 YELLOW 7.5 - 12.0 MM2 BUTT CONNECTOR: A 002 546 13 41 0.5 MM2 A 002 546 14 41 0.8 MM2 A 002 546 15 41 1.3 MM2 A 002 546 16 41 2.0 MM2	NB