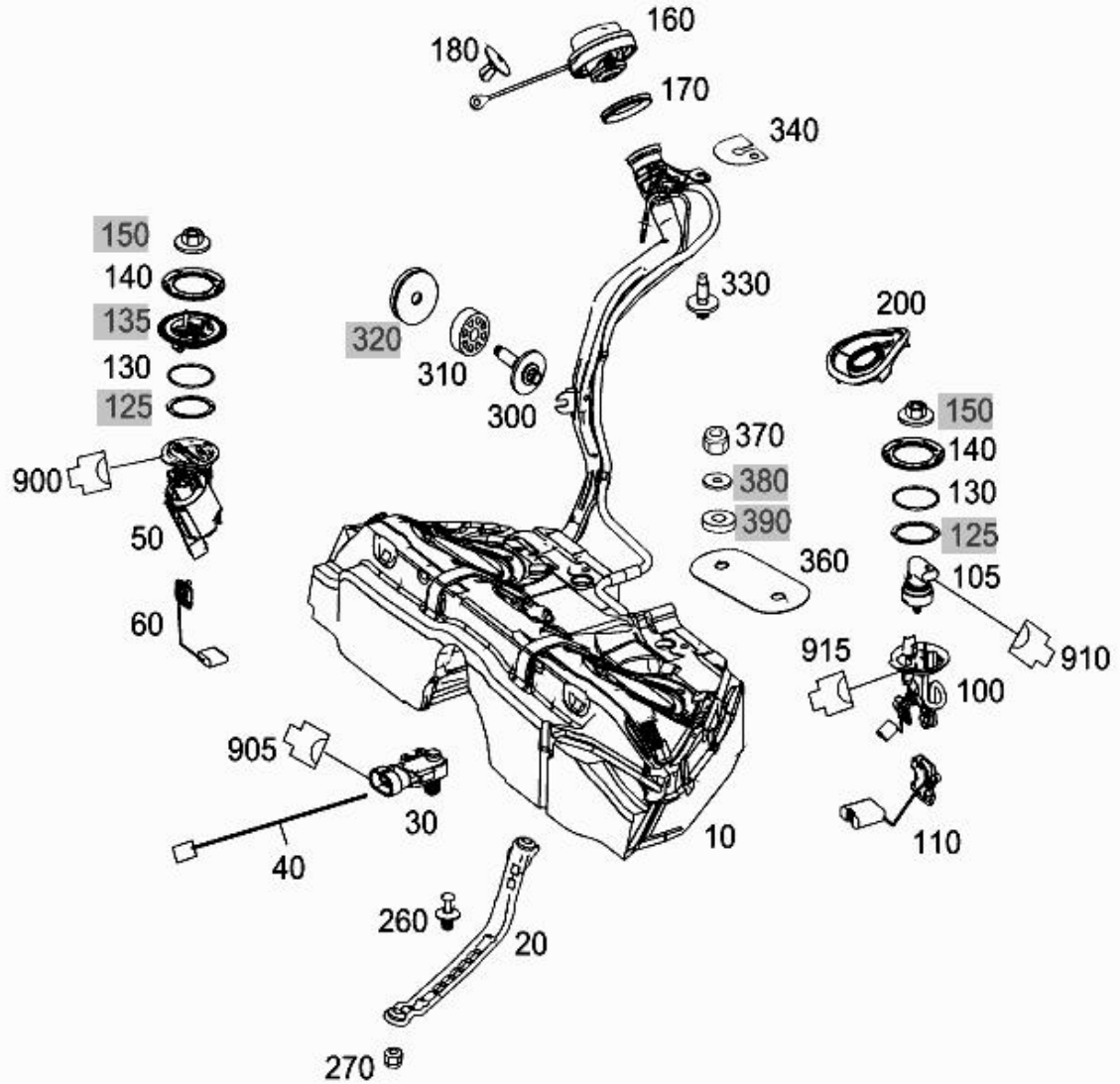


- Picture -

Mode	MD mode	Mod. des. overview	E SEDAN
FIN/MD	WDD 2120911A697776	Catalog	D04
VIN	WDDHF9BB0DA697776	Major assembly:	
Sales designation	E 500 4MATIC	Major assembly MD	
Assortment class	Car	Group	47 - FUEL SYSTEM
Market	North America	Subgroup	015 - FUEL TANK WITH ATTACHMENT PARTS
Picture number	B47015000288.111020		



450



- Parts list -

Mode	MD mode	Mod. des. overview	E SEDAN
FIN/MD	WDD 2120911A697776	Catalog	D04
VIN	WDDHF9BB0DA697776	Major assembly:	
Sales designation	E 500 4MATIC	Major assembly MD	
Assortment class	Car	Group	47 - FUEL SYSTEM
Market	North America	Subgroup	015 - FUEL TANK WITH ATTACHMENT PARTS

Item no.	Part number	Designation/description	Quantity	Version
10	A 212 470 75 01	FUEL TANK Code: 494+915/460+915/835+915	001	
20	A 212 470 01 40	RETAINING STRAP TANK TO BODYSHELL Code: 915	002	
30	A 163 542 28 18	PRESSURE SENSOR Code: -917+460+915/-917+494/-91...	001	
40	A 212 440 22 32	ELECTRICAL WIRING HARNESS TANK PRESSURE SENSOR ADAPTER LINE Code: -917+460/-917+494/-917+83...	001	
50	A 218 470 00 94	FUEL DELIVERY MODULE IN TANK AT RIGHT WITHOUT FUEL LINES	001	
60	A 204 540 07 17	. SENDER UNIT	001	
100	A 218 470 09 94	SUCTION JET PUMP IN TANK AT LEFT WITH LINES	001	
105	A 000 905 11 00	. PRESSURE SENSOR FUEL PUMP	001	
110	A 204 540 09 17	. SENDER UNIT	001	
130	A 025 997 18 45	O-RING PUMP TO RESERVOIR 135.5X6 Code: -917	002	
140	A 001 471 14 30	BAYONET TYPE CAP PUMP TO RESERVOIR Code: -917	002	
160	A 221 470 06 05	FILLER CAP Code: 460/494/835	001	
170	A 168 471 06 79	. SEAL RING FILLER CAP TO FILLER NECK Code: 460/494/835	001	
180	A 001 990 23 92	EXPANSION RIVET TANK LOCK FASTENING 5.2 MM	001	
200	A 000 998 22 01	GROMMET SEAL FILLER NECK	001	
260	A 000 991 76 40	EXPANSION RIVET Code: -460-917/-917	004	
270	A 004 990 33 50	COMBINATION NUT TANK TO BODYSHELL M8	004	
300	A 000 990 96 03	BOLT FILLER NECK TO BODY, BOTTOM M8X35	001	
310	A 003 990 14 82	WASHER FILLER NECK TO BODY, BOTTOM	001	
330	A 001 990 54 03	EXTERNAL HEXAL. HD. BOLT FILLER NECK TO BODY, TOP	001	
340	A 212 476 00 80	GASKET BETWEEN TANK LOCKING BASE AND VEHICLE SHELL Code: -917	001	
360	A 204 475 01 85	MOUNTING PLATE BETWEEN FUEL TANK AND CHASSIS Code: -460-917/-917	001	
370	A 004 990 33 50	COMBINATION NUT TANK TO BODYSHELL M8	002	
900	A 171 545 01 28	CLUTCH PLUG CONNECTION FOR FUEL PUMP WIRING HARNESS 7-PIN SLK2.8, MLK1.2;X36/2	001	

905	A 210 540 21 81	CLUTCH CONNECTOR, TANK (PRESSURE SENSOR) 3-PIN MQS;X25/4	001
910	A 211 545 17 28	CLUTCH FUEL PRESSURE SENSOR 3-PIN MLK1.2;B4/7	001
915	A 211 545 27 28	COUPLING HOUSING PLUG CONNECTION FOR FUEL PUMP WIRING HARNESS 3-PIN MLK1.2;X36/3	001