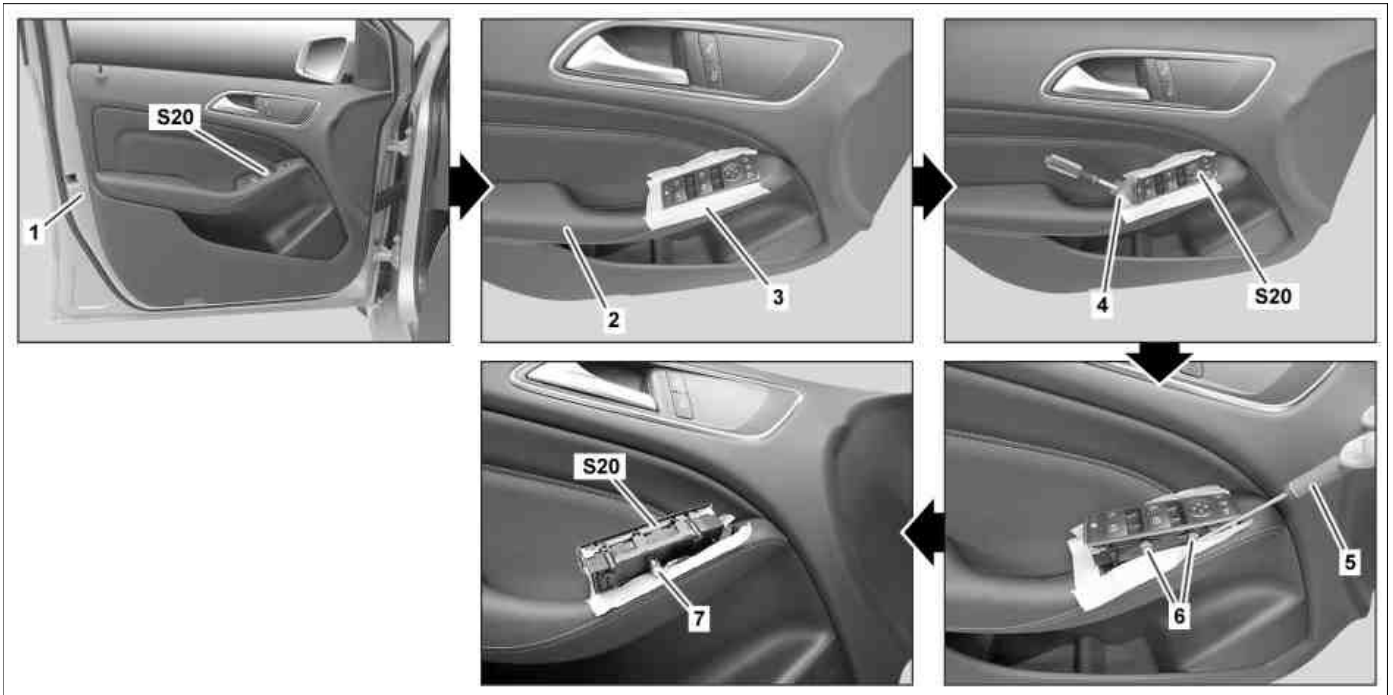


MODEL 117, 156, 166, 176, 204.3, 212 as of 3/1/11, 218, 231, 242, 246

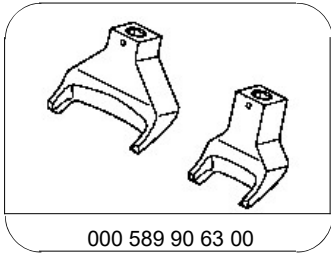


P72.29-2749-09

Shown on MODEL 246

1	Front door	4	Clip remover	7	Electrical connector
2	Armrest	5	Screwdriver	S20	Driver-side power window and outside mirror adjustment switch group
3	Adhesive foil	6	Catch hook		

	Remove		
1	Attach adhesive foil (3) to armrest (2) on front door (1)	i Directly attach adhesive foil (3) on driver-side outside mirror adjustment power window switch group (S20).	
2	Unclip driver-side outside mirror adjustment power window switch group (S20) with clip remover (4)	S Clip remover	*000589906300
3	Remove driver-side outside mirror adjustment power window switch group (S20) from armrest (2) until electrical connector (7) is accessible	i For this purpose unlock catch hooks (6) on driver-side outside mirror adjustment power window switch group (S20) with suitable screwdriver (5).	
4	Disconnect electrical connector (7) and remove driver-side outside mirror adjustment power window switch group (S20)		
5	Remove adhesive foil (3)		
	Install		
6	Connect electrical connector (7) on driver-side outside mirror adjustment power window switch group (S20)		
7	Clip driver-side outside mirror adjustment power window switch group (S20) into armrest (2)	i The driver-side outside mirror adjustment power window switch group (S20) should arrest perceptively in the armrest (2).	
8	Check adjustments for proper function		



000 589 90 63 00

Clip remover