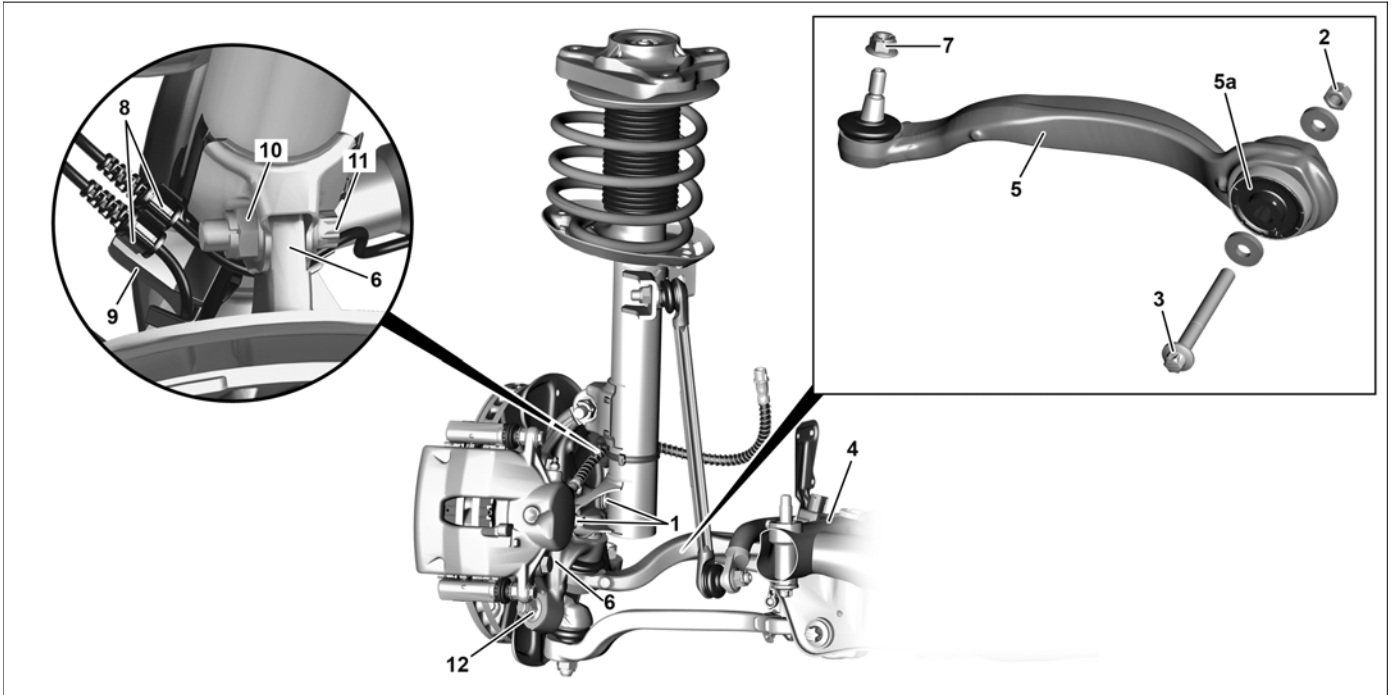


Model 212, 218
with code M005 (4MATIC)

Modification notes

05.02.2018	Replace elastomer bearing of strut rod added.	Operation step 8	
05.02.2018	Perform wheel alignment measurement added.	Operation step 10	



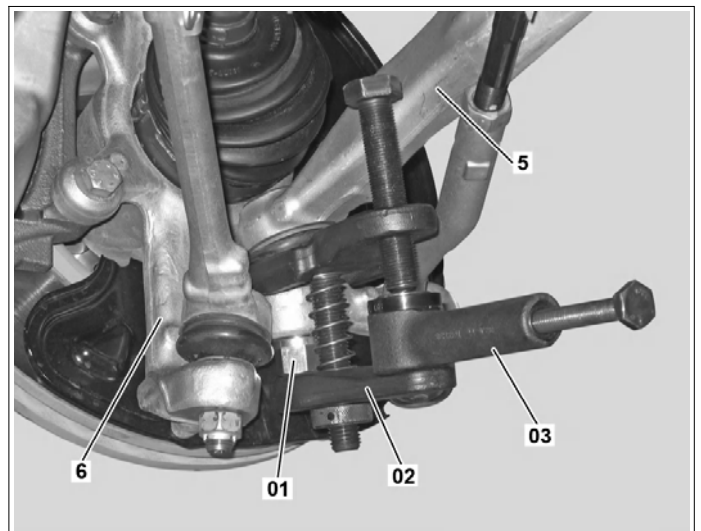
P33.15-2124-09

Shown on model 212 except code M005 (4MATIC)

1 Bolts	5a Elastomer bearing	10 Nut
2 Nut	6 Steering knuckle	11 Screw
3 Screw	7 Nut	12 Nut
4 Front axle carrier	8 Electrical lines	
5 Strut rod	9 Line bracket	

Shown on MODEL 212 with CODE M005 (4MATIC)

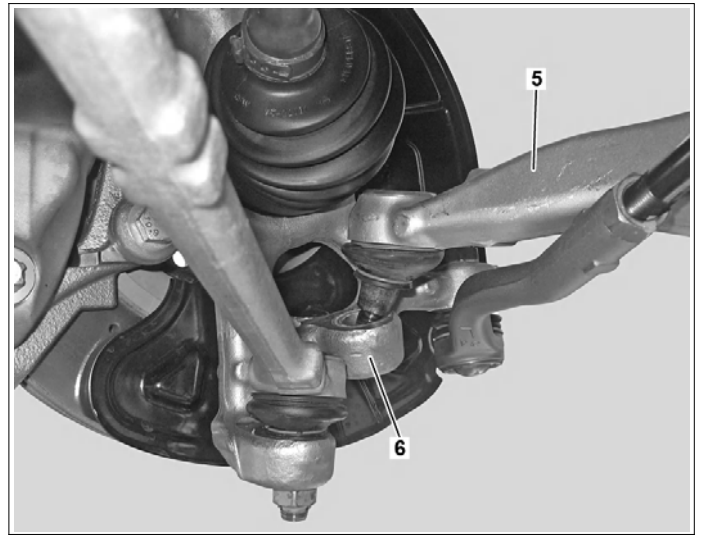
01 Thrust piece
02 Puller
03 Press
5 Strut rod
6 Steering knuckle



P33.10-2339-11

Shown on MODEL 212 with CODE (4MATIC)

- 5 Strut rod
- 6 Steering knuckle



P33.10-2338-11

	Risk of death caused by vehicle slipping or toppling off of the lifting platform.	Align vehicle between vehicle lift columns and position the four support plates at the vehicle lift support points specified by the vehicle manufacturer.	AS00.00-Z-0010-01A
	Notes on handling, transport and storage of ceramic brake disks		AH42.10-P-9406-13A
	Notes on threaded connections fastened using a tightening angle-based tightening process		AH00.00-P-0020-01A
	Notes on self-locking nuts and bolts		AH00.00-N-0001-01A
	Notes on repair work on suspension components		AH00.00-P-0100-01A
	Remove/install		
1 	Remove left or right wheel and tire assembly from front axle.		AP40.10-P-4050EW
2.1	Remove center and rear engine compartment lining.	Model 212, 218 with engine 157, 276, 278 with code M005 (4MATIC)	AR61.20-P-1105EW
2.2	Remove center and rear bottom section of soundproofing.	Model 212, 218 with engine 642, 651 with code M005 (4MATIC)	AR94.30-P-5300EW
3	Unscrew nut (7).	Model 212 Locknut, strut rod to steering knuckle Model 218 Self-locking nut, strut rod to steering knuckle	*BA33.20-P-1004-01O *BA33.20-P-1004-01Q
4	Remove strut rod from steering knuckle (6).	Removal: Pry off strut rod (5) using thrust piece (01), puller (02) and press (03) from steering knuckle (6). Installation: The grease in the radial groove must not be removed. The centering cone and the thread must not have any grease on them. Thrust piece Puller Press	*171589003400 *221589003300 *163589034300
5	Unscrew nut (2) and pull bolt (3) out of front axle carrier (4).	When using the repair kit, the screw (3) must not be turned when releasing and tightening the nut (2). It is essential to counterhold the bolt (3). Otherwise, the caster adjustment attachments may be sheared off. Installation: Tighten nut (2) of screw (3) lightly to start with by hand. Tighten nut (2) firmly once the vehicle' suspension is compressed. Model 212 Bolt, strut rod to integral support Model 212 Locknut (repair kit), strut rod to integral carrier	*BA33.20-P-1002-01O *BA33.20-P-1003-01O

		Model 218 Bolt, strut rod to front axle carrier	*BA33.20-P-1002-01Q
		Model 218 Self-locking nut (repair kit), strut rod to front axle carrier	*BA33.20-P-1003-01Q
6	Remove strut rod (5) from front axle carrier (4) and steering knuckle (6).		
	Check		
7	Check sealing boot and ball joint of strut rod (5) for damage.	If the strut rod (5) is damaged, ↓ replace strut rod (5).	
8	Check elastomer bearing (5a) of strut rod (5) for damage.	If elastomer bearing (5a) of strut rod (5) is damaged, ↓ replace elastomer bearing (5a) of strut rod (5). Extraction and installation tool	AR33.15-P-0160-02EW *212589004300
9	Install in the reverse order.		
10	Perform chassis alignment.	If elastomer bearing (5a) was replaced.	AR40.20-P-0200EW

Wheel control, hub

Number	Designation	MODEL 212 with 4MATIC		
BA33.20-P-1002-01O	Bolt, strut rod to integral support	Stage 1	Nm	120
		Stage 2	∠°	180

Wheel control, hub

Number	Designation	MODEL 218 with 4MATIC		
BA33.20-P-1002-01Q	Bolt, strut rod to front axle carrier	Stage 1	Nm	120
		Stage 2	∠°	180

Wheel control, hub

Number	Designation	MODEL 212 with 4MATIC		
BA33.20-P-1003-01O	Locknut (repair kit), strut M14 × 1.5 × 11.9 rod to integral carrier	Stage 1	Nm	100
		Stage 2	∠°	180

Wheel control, hub

Number	Designation	MODEL 218 with 4MATIC		
BA33.20-P-1003-01Q	Self-locking nut (repair kit), strut rod to front axle carrier	Stage 1	M14 × 120 × 11.9 Nm	100
		Stage 2	∠°	180

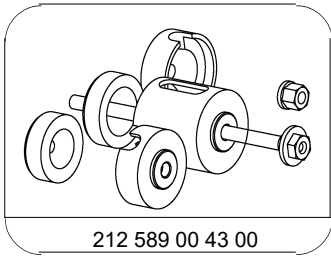
Wheel control, hub

Number	Designation	MODEL 212 with 4MATIC		
BA33.20-P-1004-01O	Locknut, strut rod to steering knuckle	Stage 1	Nm	50
		Stage 2	∠°	90

Wheel control, hub

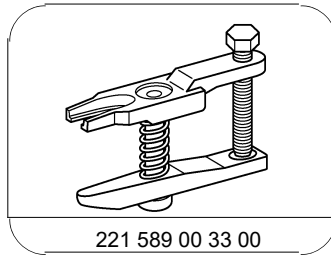
Number	Designation	MODEL 218 with 4MATIC		

BA33.20-P-1004-01Q	Self-locking nut, strut rod to steering knuckle	Stage 1	Nm	50
		Stage 2	∠°	90



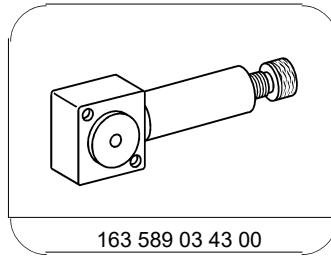
212 589 00 43 00

Extraction and installation tool



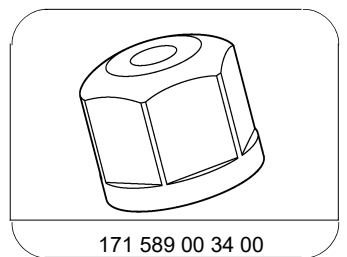
221 589 00 33 00

Puller



163 589 03 43 00

Press



171 589 00 34 00

Thrust piece