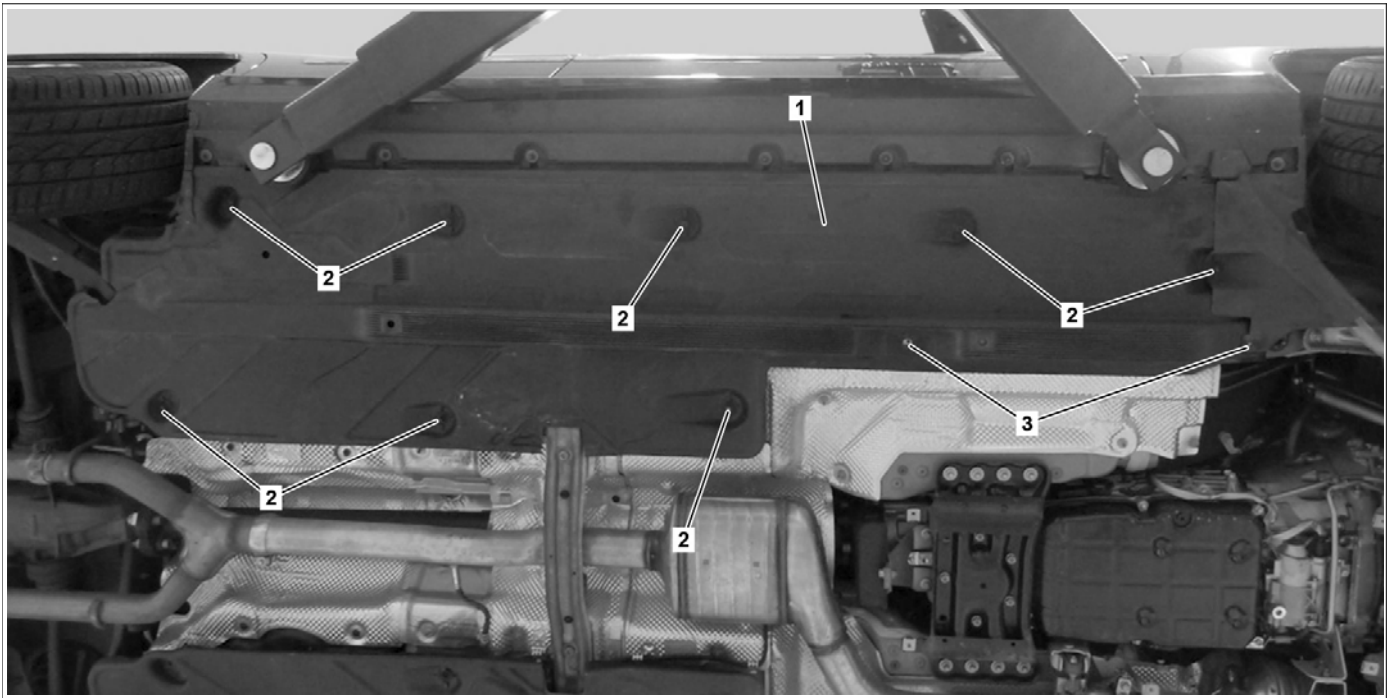


Model 204, 207, 212, 231

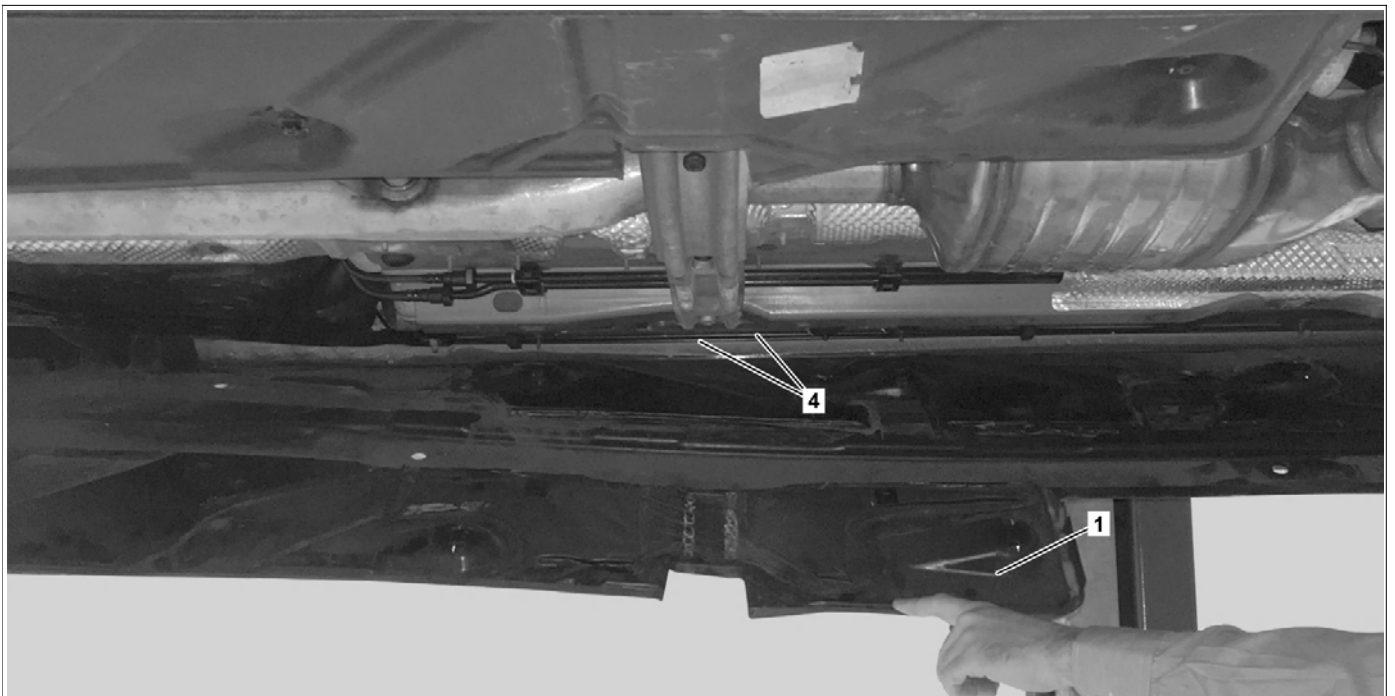


P42.00-A002-09

Shown on model 204

- 1 Side underfloor paneling
- 2 Nuts

- 3 Bolts

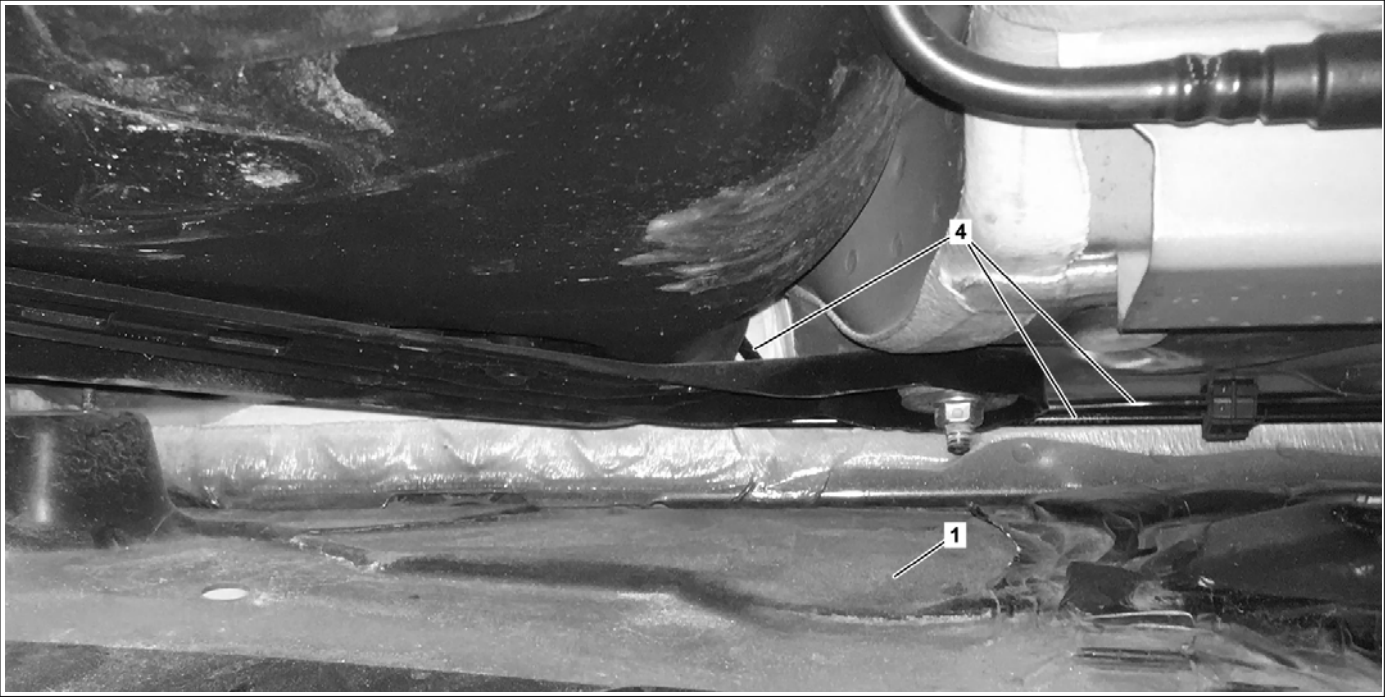


P42.00-A001-09

Shown on model 204

- 1 Side underfloor paneling

- 4 Brake lines

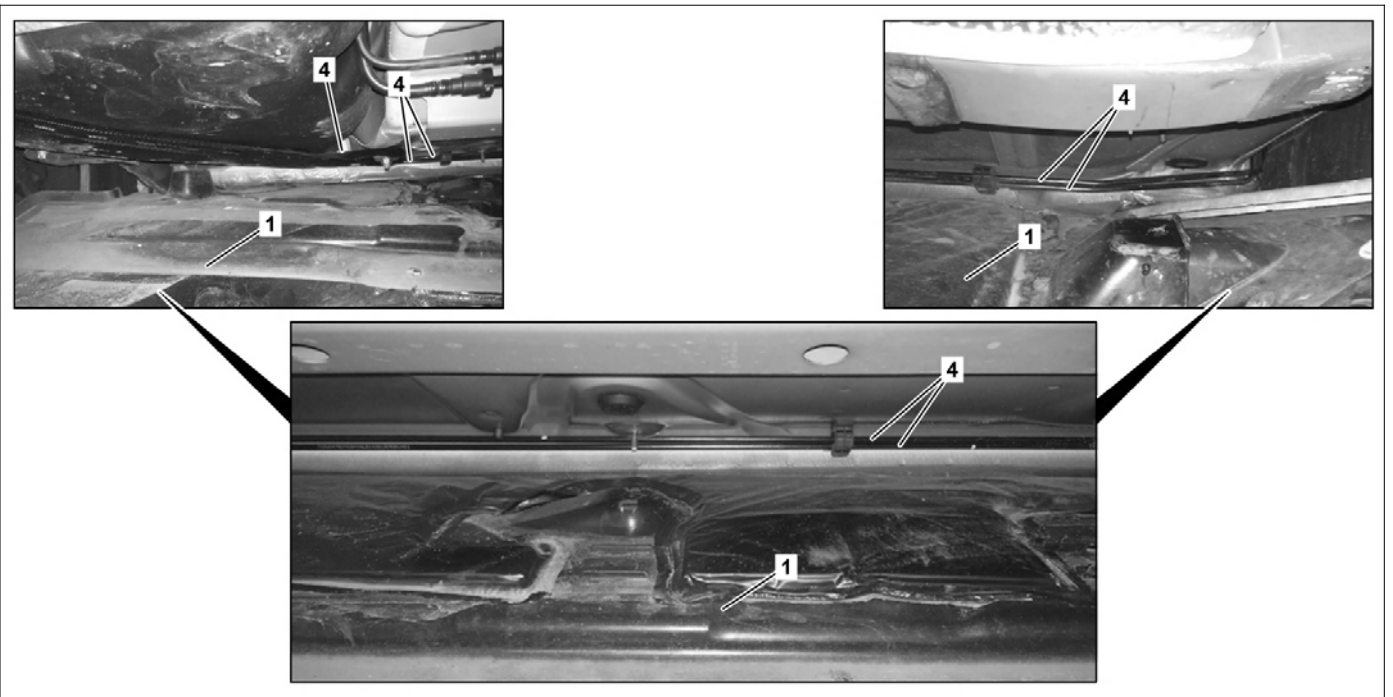


P42.00-A003-09

Shown on model 204

1 Side underfloor paneling

4 Brake lines








P42.00-A000-09

Shown on model 204

1 Side underfloor paneling

4 Brake lines

	<b>Risk of death</b> caused by vehicle slipping or toppling off of the lifting platform.	Align vehicle between vehicle lift columns and position the four support plates at the vehicle lift support points specified by the vehicle manufacturer.	AS00.00-Z-0010-01A
	<b>Preparatory activity</b>		
1	Lift vehicle with lifting platform.		

 AR			AR00.60-P-1006A
	<b>Remove</b>		
2	Remove bolts (3) and nuts (2) and release side underfloor paneling.		
3	Fold side underfloor paneling (1) downwards.		
	<b>Check</b>		
4	Check brake lines (4) and holder in field of vision.	<p><b>i</b> If necessary, use commercially available devices/tools. Swiveling inspection mirror with lighting, comparable to inspection mirror Hazet 1977-1 If the brake lines (4) are not damaged or corroded,</p> <p style="text-align: center;">↓</p> <p>brake lines (4) are OK, continue with operation step 5. If the brake lines (4) are damaged or corroded,</p> <p style="text-align: center;">↓</p> <p>rectify problems, in accordance with the country-specific regulations for mobility and body shell complaints.</p> <p><b>i</b> After obtaining special order.</p>	
	<b>Install</b>		
5	Fold side underfloor paneling (1) upwards and tighten bolts (3) and nuts (2).		
	<b>Preparatory activity</b>		
6	Lower vehicle with vehicle lift.		
 AR			AR00.60-P-1006A