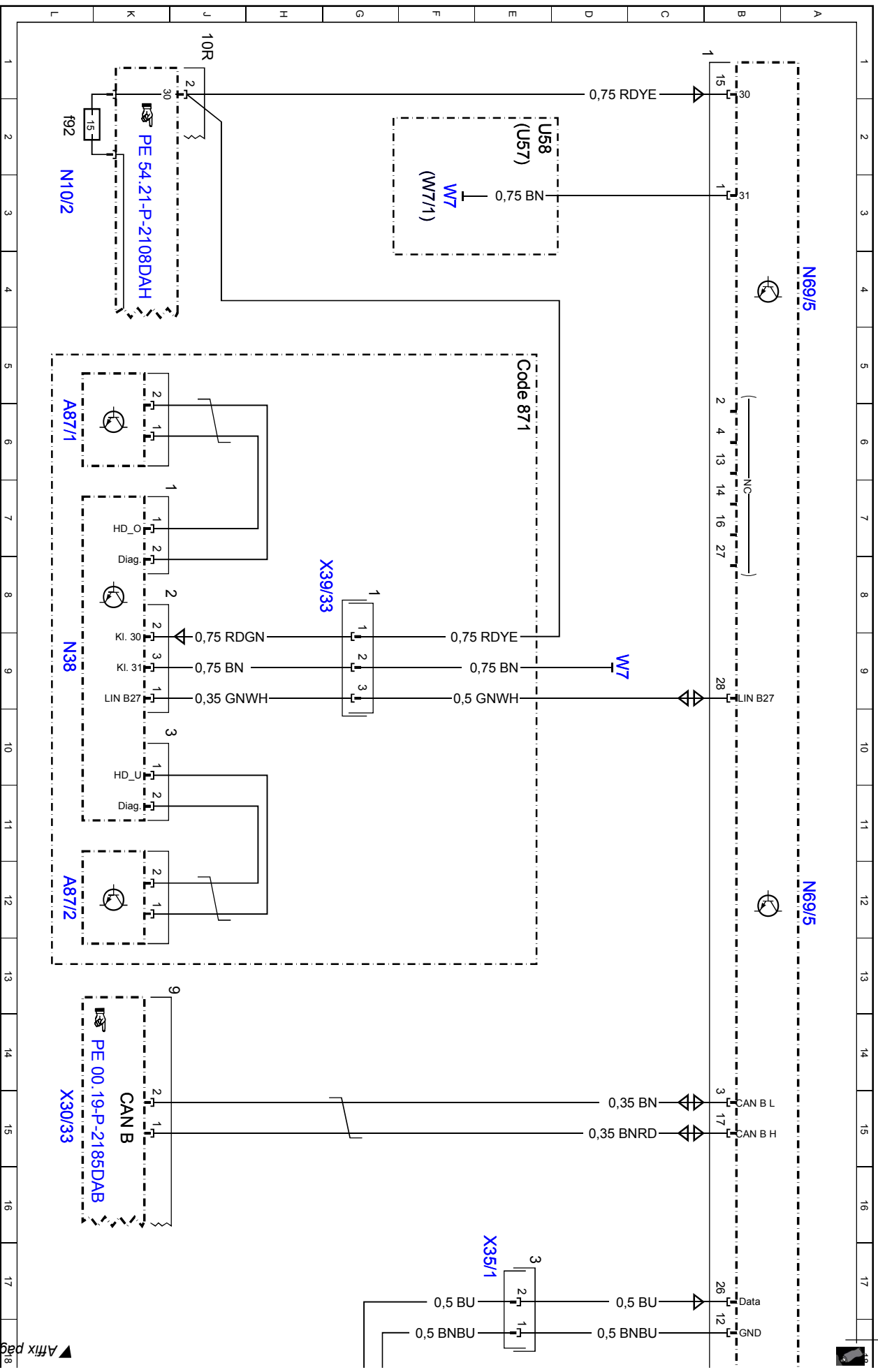


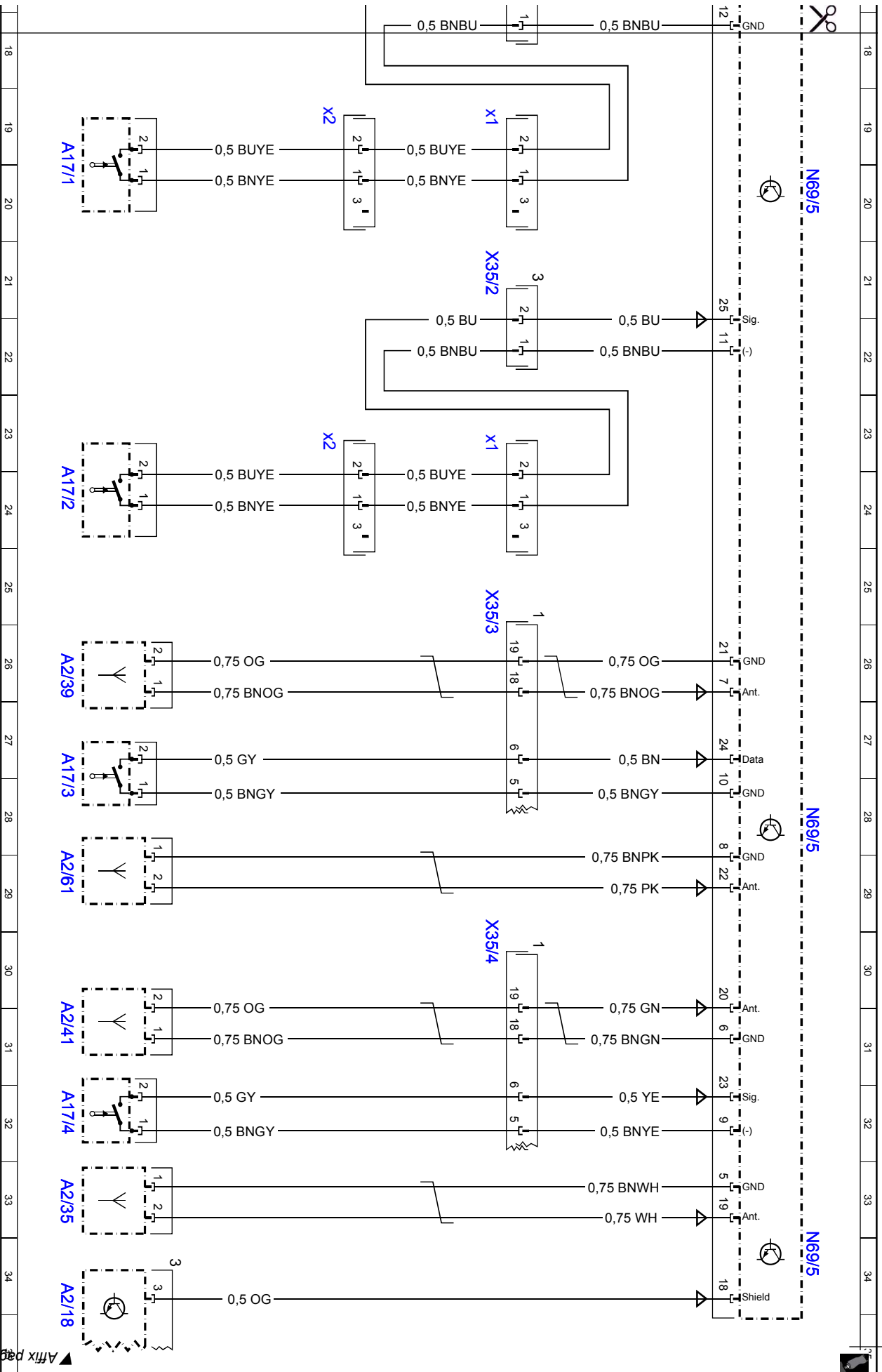
Document number: pe80.6t1-p-2101-97dab

Document title: Wiring diagram for Keyless Go control unit

Code:	Designation:	Position:
A0	Color code key	40L
A17/1	Left front KEYLESS-GO door handle	19L
A17/1x1	Left front KEYLESS-GO door handle electrical connector 1	19E
A17/1x2	Left front KEYLESS-GO door handle electrical connector 2	19H
A17/2	Right front KEYLESS-GO door handle	24L
A17/2x1	Right front KEYLESS-GO door handle electrical connector 1	23E
A17/2x2	Right front KEYLESS-GO door handle electrical connector 2	23H
A17/3	Left rear KEYLESS-GO door handle	27L
A17/4	Right rear KEYLESS-GO door handle	32L
A2/18	FM 1, AM, CL [ZV] and KEYLESS-GO antenna amplifier	34L
A2/35	Trunk KEYLESS-GO antenna	33L
A2/39	Left rear door KEYLESS-GO antenna	26L
A2/41	Right rear door KEYLESS-GO antenna	31L
A2/61	Interior KEYLESS-GO antenna	29L
A87/1	Rear switching module upper sensor	6L
A87/2	Rear switching module lower sensor	12L
CANB	Interior CAN	15K
Code 871	Sensor system for trunk lid opening/closing	5E
N10/2	Rear SAM control unit with fuse and relay module	3L
N10/2f92	Fuse 92	2L
N38	Rear switching module	9L
N69/5	KEYLESS-GO control unit	20A
N69/5	KEYLESS-GO control unit	4A
N69/5	KEYLESS-GO control unit	28A
N69/5	KEYLESS-GO control unit	12A
N69/5	KEYLESS-GO control unit	34A
U57	Valid for model 212.2	2E
U58	Valid for model 212.0/1	2E
W7	Right rear wheel well ground point	3F
W7	Right rear wheel well ground point	9D
W7/1	Right taillamp trunk ground point	3F
X30/33	Right vehicle floor interior CAN voltage distributor electrical connector	15L
X35/1	Left front door electrical connector	17E
X35/2	Right front door electrical connector	21E
X35/3	Left rear door electrical connector	25E
X35/4	Right rear door electrical connector	30E
X39/33	Rear switching module electrical connector	8H

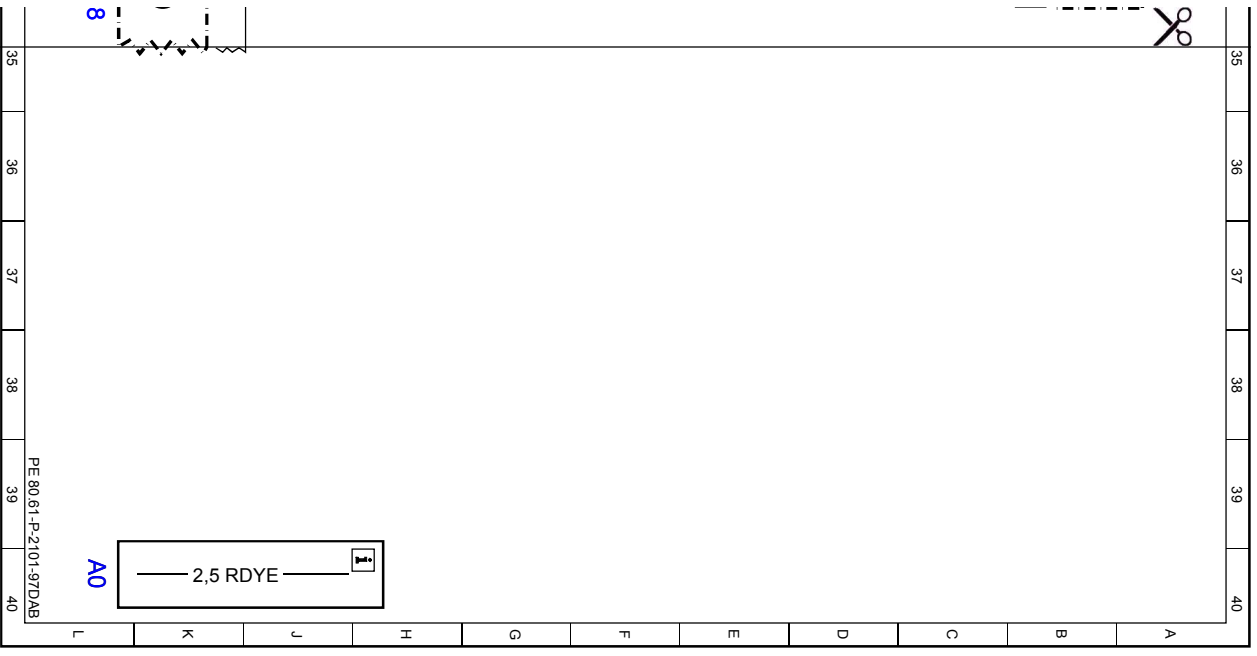


▲ Affix page 2 here



Cut here

▲ Affix page 3 here



Cut here

PE 80 61-P-2101-97DAB